

# Emanu-El <sup>S</sup><sub>F</sub>

## Celebrating the Festival of Lights!



**DEC  
10**

DENNIS PRAGER  
IN CONVERSATION  
WITH J STREET'S  
ALAN ELSNER



**JAN 2018  
12 & 14**

31ST ANNIVERSARY  
OF THE MLK JR.  
PULPIT EXCHANGE  
WITH THIRD  
BAPTIST CHURCH



**FEB  
6**

KOLEINU\* SONGS  
OF RESILIENCE  
AND RENEWAL!

# UPCOMING EVENTS

Israel Action Committee Sponsored Event

## ADVANCING THE CAUSE: THE LEFT AND RIGHT VISIONS FOR AMERICAN JEWRY AND ISRAEL

**December 10, 3:00 – 5:00 pm, Temple Emanu-El**

The overall political polarization so prevalent in the U.S. today is also well exemplified in the American Jewish community. What is our way forward? Which path will fulfill our unique mission as stakeholders in the relationship between the U.S. and Israel?

Our two distinguished speakers — radio talk host Dennis Prager and J Street's Alan Elsner — share a similar Jewish affiliation and strong roots, yet diverge sharply in diagnostic perspective and policy recommendations. Rebecca Macieira-Kaufman, a former Emanu-El executive board member, will moderate this lively debate.

RSVP is required! We look forward to your participation!



**Dennis Prager**



**Alan Elsner**



## JEWISH HERITAGE NIGHT WITH THE WARRIORS

**December 14, 7:30 pm, Oracle Arena, Oakland**

Our Bay Area Jewish community will be in full force at Oracle Arena when the Golden State Warriors take on the Dallas Mavericks on the third night of Chanukah. A commemorative Warriors Jewish Heritage Night giveaway is included with each special event ticket, along with an exciting pre-game celebration (details to follow). Register for this event via the Golden State Warriors' website.

## ONE SHABBAT SERVICE WITH RABBI STEPHEN PEARCE December 1, 6:00 pm, Main Sanctuary

Stephen S. Pearce, Senior Rabbi, Emeritus, will deliver the sermon at this evening's Shabbat service. Please join us!



## RABBI'S LETTER

By Richard and Rhoda Goldman Senior Rabbi Beth Singer

### EIGHT TZEDEK GIFT IDEAS!

It is commonly maintained that "Chanukah is just a minor festival." In actuality, however, Chanukah has evolved in modern times into a major holiday that involves significant gift-giving to family and friends.

But not all gifts need to come wrapped with a bow! We can also commemorate the eight days of miracle by doing mitzvot.

Below is a list of eight different ways, one for each night of Chanukah, in which you can make a positive difference in the world — as an individual, as a family, or with a group of friends. Although not all of these mitzvot can be performed on a specific night of Chanukah, many can be done at some point between December 12 and 20 of this year, while a few can be done a little before Chanukah or just after Chanukah in January 2018. Let us commit to as many of these endeavors as possible so we may increase the light throughout the holiday season! To learn more about these opportunities to do mitzvot, please visit our website.

#### 1) DECEMBER COLLECTION DRIVE: TOILETRIES FOR HOMELESS MEN IN SAN FRANCISCO.

Next time you go to the dentist or stay in a hotel, please ask for a donation of supplies to give to the homeless men staying at the Winter Interfaith Shelters this winter. Collection bins for these toiletries will be available at Emanu-El throughout the month of December. *See the Community Engagement section of the Chronicle for more information.*

#### 2) JEWISH FAMILY AND CHILDREN'S SERVICES CHANUKAH TOY DRIVE.

JFCS is hosting a holiday toy drive to benefit families in Sonoma County who were displaced by the fires, as well as low-income families and those who have experienced domestic violence and homelessness in San Francisco. Please drop off new, unwrapped toys for children of all ages, as well as gift cards (iTunes, Amazon.com, etc. are often great for teens). The collection bin is open Monday through Friday, 9:00 am – 5:00 pm. For more information, contact JFCS at [miriamm@jfcs.org](mailto:miriamm@jfcs.org) or (415) 449-3824. **Note: Items must be received by no later than December 8!**

#### 3) BEACH CLEANUP AND ENVIRONMENTAL AWARENESS.

Earlier this fall, a beloved congregant — 27-year-old Jeremy Dossetter — died when his helicopter fell into the ocean in Hawaii. Jeremy treasured the beach, and not just for its recreational opportunities; he also made it a habit to pick up trash at the beach whenever he went there to surf. In memory of Jeremy and to carry forward his environmental work, please take one hour of one day of Chanukah to clean up a local beach. In addition, consider learning eight new facts (via internet research) — one for each night of Chanukah — about an environmental issue such as climate change.

#### 4) LIGHT CHANUKAH CANDLES WITH THE BLACK-JEWISH UNITY GROUP – THURSDAY, DECEMBER 14.

The unity group meets on the second Thursday of each month (6:00 – 7:30 pm), at the African-American Arts and Culture Complex in San Francisco, to strengthen African-American/Jewish relationships and to fight racial injustice in our community. You are more than welcome to join us any time, but in particular for Chanukah this year, on December 14. *See the Community Engagement section for more information on this group.*



#### 5) COOKING FOR CONGREGANTS.

Help your fellow Emanu-El members by performing this mitzvah for congregants in need — those who are facing either a recent illness, death, or birth. Cooking for Congregants meets on select Thursday mornings in the temple kitchen. *See the Community Engagement section for more information.*

#### 6) WINTER INTERFAITH SHELTER DINNER: CONGREGANT NIGHT – JANUARY 22, 2018.

Join Emanu-El in the mitzvah of feeding the hungry by providing volunteers to shop, cook, and serve dinner to over 100 homeless men for eight consecutive nights at St. Mark's Lutheran Church. Join your constituent group at Emanu-El or volunteer on open congregant night on Monday, January 22, 2018.

#### 7) JANUARY COLLECTION DRIVE: MULTICULTURAL BOOKS FOR THE JEWISH COALITION FOR LITERACY.

Many Bay Area public schools lack well-stocked libraries or the funds to buy new books. Help provide our local schools with multicultural picture books for grades Pre-K through 3rd (ages 4–9). Donate anytime during the month of January 2018, and look for this collection drive to be featured at our Annual MLK Shabbat Service with Third Baptist Church on January 12, 2018.

#### 8) TU B'SHEVAT WITH HAMILTON FAMILIES.

This Tu B'Shevav, join your fellow congregants as we beautify Hamilton's Transitional Housing garden with new plants, trees, and flowers on Sunday, January 28, 2018.

# SHABBAT CALENDAR

## DECEMBER

### Friday, December 1

#### FIRST FRIDAY SHABBAT SERVICES!

5:30 pm, First Friday Under Five Service (MMS)

6:00 pm, Classic Shabbat Service (Main)

### Saturday, December 2

10:30 am, Shabbat Morning Service (MMS)

10:30 am, Shabbat Morning Service (Main)

### Friday, December 8

6:00 pm, One Shabbat Service (MMS)

8:30 pm, Young Adult Late Shabbat

### Saturday, December 9

10:30 am, Shabbat Morning Service (MMS)

10:30 am, Shabbat Morning Service (Main)

### Friday, December 15

6:00 pm, One Shabbat Service (MMS)

### Saturday, December 16

10:30 am, Shabbat Morning Service (MMS)

10:30 am, Shabbat Morning Service (Main)

### Friday, December 22

6:00 pm, One Shabbat Service (MMS)

### Saturday, December 23

10:30 am, Shabbat Morning Service (MMS)

### Friday, December 29

6:00 pm, One Shabbat Service (MMS)

### Saturday, December 30

10:30 am, Shabbat Morning Service (MMS)

## SPONSOR AN ONEG SHABBAT

Sponsoring an Oneg-Shabbat on Friday evening is a sweet way to honor or remember a loved one or to celebrate a *Simcha*. When you sponsor an Oneg-Shabbat, you help us welcome Shabbat with the warmth and community that are characteristic of our congregation. For more details, contact Svetlana Leykin at [sleykin@emanuelf.org](mailto:sleykin@emanuelf.org) or call (415) 751-2541 ext. 123.

#### Thank you to the following for co-sponsoring recent Oneg-Shabbat receptions:

In memory of Dora and Joseph Snyderman and in honor of the Bat Mitzvah of Julia Reese Shalev

The Uziel Family, in honor of the Bar Mitzvah of Micah Jacob Uziel

The Seligman Family, in honor of the Bat Mitzvah of Mimi Seligman

Ann and Asher Sheppard, in honor of the Bar Mitzvah of Matthew Benjamin Wolf

Andy Schloss and Teri Kanefield, in honor of the Bar Mitzvah of Joel Schloss

## YEAR-END GIVING

### APPRECIATED STOCK GIFTS

Did you know that you can make charitable donations — including your Emanu-El membership dues and Impact Fund gifts — from your appreciated stock? With the Dow continuing to break new records and year-end giving in mind, now is an excellent time to avoid potential capital gains taxes while generously supporting the congregation. You may also reduce your taxable estate by donating stock.

If you are making a stock gift, please use the following information:

First Republic Securities Co, LLC

Account Name: Congregation Emanu-El

For Further Credit to Account Number: 33L064574

Clearing Firm: Pershing LLC

Pershing LLC DTC# 0443

Note: Please make the Development Office ([tbrown@emanuelf.org](mailto:tbrown@emanuelf.org) or 415-750-7554) aware of your stock gift before it is transferred so your donation can be tracked and appropriately directed as you wish.

## CORPORATE MATCHING

#### Does the company you work for participate in corporate matching?

Many Bay Area companies, including Yelp, Clorox, Google, and Salesforce, will match your gift dollar-for-dollar. Please contact your company's matching gifts coordinator to obtain a matching gift form and determine whether your gift to Congregation Emanu-El can be matched.

Thank you to the following companies for matching our member's donations:

Apple (4) • Clorox Corporation • Google (3)

Black Rock • Deloitte & Touche LLP

# ENSHRINING A MUSICAL LEGACY

By Byron Gordon

To be an effective philanthropist means to be focused on the issues and causes you care most about. For Fred and Nancy, carrying forward the legacy of their cousins, Drs. Ben and A. Jess Shenson, has been a tremendous honor. "Our mission remains the same as it was when we first began the Shenson Foundation back in 1995," said Nancy. "To support the performing and visual arts, Jewish social services, and education, these are the areas both Ben and Jess Shenson were most passionate about."

As lifelong members of Congregation Emanu-El, the Shenson brothers devoted their financial resources to the arts and Jewish causes, including such organizations as the San Francisco Symphony, the San Francisco Opera, the San Francisco-based Jewish Community Federation, and many more. About seven years ago, Fred began having conversations with Rabbi Stephen Pearce. "At that time, supporting a Cantorial position wasn't feasible. There were too many other commitments. But we did not give up on the dream," said Fred. "We wanted the legacy of the Shensons' generosity to live in perpetuity. And by naming this position, it will."

The Shensons had great love and appreciation for Classical Reform Jewish music, which is something not lost upon Cantor Luck. "It is a tremendous honor to have been named the Ben

*As stewards of the Shenson Foundation, Fred Levin and Nancy Livingston created the Ben and A. Jess Shenson Cantorial position at Emanu-El, which is now held by Cantor Arik Luck.*



On the left: Dr. A. Jess Shenson  
On the right: Dr. Ben Shenson

and A. Jess Shenson Cantor," said Cantor Luck. "The Shenson family were lovers and supporters of the great musical traditions of our institution. As such, this tremendous gesture of remembrance by Fred Levin and Nancy Livingston will for me serve as an ongoing source of inspiration, while I both honor and draw from our rich musical legacy, as we continue forward together in our services, concerts, and programs. I want to extend a heartfelt thank you to Fred and Nancy and to all of the members of our congregation for their continued support."

As the world becomes more interconnected, due in no small measure to the advent of the Internet, the way people consume music and art has changed. People now engage through iPhones, smart TVs, laptops, etc. "The entire delivery system is changing," said Nancy. "Will people visit the opera house? Sit in concert halls? Come to the sanctuary? Or will they stay at home and put on their headphones instead? People are receiving content in a whole new way."

Thanks to this gift by Fred and Nancy, there will always be a formal, dedicated cantorial position at Emanu-El. "We are being respectful of the past, but we're also being mindful of the future of the congregation," said Nancy.

Fred and Nancy remain active in a number of philanthropic enterprises. The Ben and A. Jess Shenson Cantorial position constitutes the largest gift the Shenson Foundation has ever made. "We are grateful to carry on the legacy of Ben and A. Jess Shenson as we continue to support the organizations they both loved," said Fred. "We know this position has the potential to touch the hearts and spirits of thousands in the Emanu-El community as well as many generations to come."



A photograph of three children gathered around a lit menorah. One child is pointing at the flames, while the others look on. The menorah is ornate and sits on a table. The background is dark, and the scene is dimly lit by the candles.

## CELEBRATE CHANUKAH WITH THE EMANU-EL COMMUNITY!

As one of the most popular Jewish symbols in existence today, the menorah stands for light, wisdom, and divine inspiration. The flames of each candle act as a symbol of Jewish identity and continuity.

Please join us in lighting the menorah at the many events detailed below.

## POP-UP NEIGHBORHOOD MENORAH LIGHTINGS WITH YOUR EMANU-EL CLERGY

### CHANUKAH HAPPY HOUR

**Tuesday, December 12**  
**5:30 – 7:30 pm**

*Doc's Lab, 124 Columbus Avenue, San Francisco*

No kids at home on Chanukah? Join us on the first night of the Festival of Lights as we rekindle the days of San Francisco's Barbary Coast at an evening of living history. Join the Rabbis Singer and Senior Cantor Emerita Roslyn Barak at Doc Ricketts restaurant in North Beach. The evening will feature a no host gathering of libations and classic food fare (from salads to tacos to charcuterie), along with merriment, prayer, and song. Cantor Barak and an accompanist are going to include a jazz set. Don't miss out!

Meet downstairs in the subterranean performance venue known as Doc's Lab (formerly the Purple Onion). And please register so we know to expect you!

### CHANUKAH POP UP MENORAH LIGHTING – LAUREL VILLAGE

**Wednesday, December 13**  
**6:00 – 7:00 pm**

*in front of Books Inc., 3515 California Street, SF*

Join your Emanu-El clergy as we celebrate with music, singing, candle lighting, Chanukah treats, and dreidels!

### NOE VALLEY CHANUKAH LIGHTING (NOTE NEW LOCATION THIS YEAR!)

**Thursday, December 14**  
**6:00 – 7:00 pm**

*Noe Valley Town Square, on the south side of 24th Street between Sanchez and Vicksburg, San Francisco*

Rabbi Jason Rodich will lead our celebration with a large menorah, music, and treats. All are welcome!

### MARIN CHANUKAH LIGHTING

**Thursday, December 14**  
**6:00 – 7:00 pm**

*Town Center Corte Madera Shopping Mall (east side of the freeway), Corte Madera*

Join in the celebration of music, singing, candle lighting, and treats — with Cantor Marsha Attie and Senior Rabbi Jonathan Singer. We'll gather by the elephant fountain inside the south end of the mall, near the mall-side entrance to Barnes & Noble.

### CHANUKAH PARTY FOR MISHPACHA FAMILIES (AGE 5 AND UNDER) AT EMANU-EL

**Friday, December 15**  
**5:00 – 6:00 pm, Temple Emanu-El**

Join us for a special Chanukah-themed gathering with festive activities and snacks appropriate for the little ones. After the party, we invite you to stay for the One Shabbat service at 6:00 pm, and then the dinner and magic show (see below) immediately following services.



## CHANUKAH ONE SHABBAT SERVICE

**Friday, December 15**  
**6:00 pm, Temple Emanu-El**

Join us for a Chanukah One Shabbat service. Please bring your Chanukiot (and candles) to light with the community. Note that registration is required.

## CHANUKAH DINNER AND MAGIC SHOW

**Friday, December 15**  
**7:15 – 9:00 pm, Guild Hall**

After the conclusion of our One Shabbat Chanukah service, join us for dinner, followed by a magic show led by Brian Scott. This event is for the entire family! Note that registration is required for dinner.

## YOUNG ADULTS: 5TH CRAZY NIGHT CHANUKAH PARTY WITH SHAMATI!

**Friday, December 15**  
**8:30 pm – 2:00 am**

*Brick & Mortar Music Hall, 1710 Mission Street, San Francisco*



Join us for our fourth annual “crazy” night of Chanukah at Brick and Mortar Music Hall, where local Bay Area favorites SHAMATi ([www.shamatimusic.com/](http://www.shamatimusic.com/)) will play the night away! Schmooze with Bay Area Jews, eat sufganiyot, spin the dreidel, light the Chanukiah, and listen to some of the best live music the Bay Area has to offer — in a private, reserved space. Please visit our website to register.

**Want to delight your whole family?**

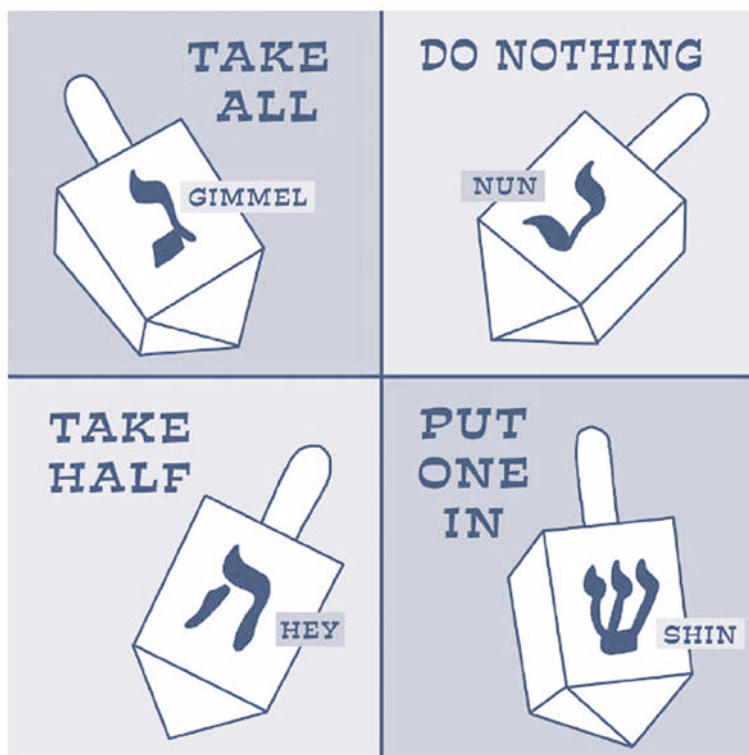
**We’ve got a cheat sheet of some fun activities for your Chanukah celebration!**

## How to Play Dreidel

Distribute an equal number of gambling pieces to each player.

Begin play by having each of the players ante up one or two pieces into a common pot.

Take turns spinning the dreidel and taking the actions determined by the letter you spin:



### **Nun**

The player takes nothing.

### **Gimel**

The player takes all.

### **Hey**

The player takes half.

### **Shin**

The player puts in.

The winner is the person who collects all the gambling pieces.

(Reprinted from ReformJudaism.org)

# Instructions for Lighting the Menorah

## WHAT KIND OF MENORAH?

The menorah can be any size, and made of any material.

All eight candles (except the Shamash) should be at the same height, and preferably in a straight line.

## HOW MANY CANDLES?

One candle is added each of the eight nights – plus the extra helper candle called the “Shamash” (the center candle).

## WHY 8?

Chanukah is celebrated 8 days even though the miracle of the oil was really only 7 (the first day's light shouldn't count – it's natural) to teach us that everything in the 'natural' world is really a miracle. Nothing happens without God willing it.



## WHERE TO LIGHT?

To publicize the miracle many light the menorah outside their front doorway. Otherwise, the menorah should be lit in a window facing the street.

## WHAT TO LIGHT?

The candles must be big enough to burn for at least 30 minutes. Many use olive oil, to Recall the original miracle in the Temple.

## HOW TO LIGHT?

Light the Shamash  
Recite the blessings  
Use the Shamash to light the Chanukah candles.

## WHEN TO LIGHT?

The first opportunity to light is at nightfall. Many wait until later, when all the members of the household are present.

## WHO LIGHTS?

In Ashkenazi tradition, each person lights his own menorah. Sephardic tradition is one menorah per family.

# A GUIDE TO LIGHTING YOUR MENORAH

We light the menorah for eight days to remember the miracle of the human spirit, honor the light of rededication and the Maccabees who put their trust in God. Small lights push back darkness just as a small vial of oil for eight nights helped redeem our hope. (Reprinted from aish.com)

## CHANUKAH BLESSINGS:

Blessed are You, Adonai our God, Sovereign of all, for giving us life, for sustaining us, and for enabling us to reach this season.

ברוך אתה יי אלהינו מלך העולם, אשר קדשנו  
במצותיו, וצונו להדליק נר של חנוכה.

Baruch atah, Adonai Eloheinu, Melech haolam,  
asher kid'shanu b'mitzvotav v'tsivanu l'hadlik ner shel Hanukkah.

Blessed are You, Adonai our God, Sovereign of all,  
who hallows us with mitzvot, commanding us to kindle the Hanukkah lights.

ברוך אתה יי אלהינו מלך העולם, שעשה נסים לאבותינו  
ואמותינו בימים ההם בזמן הזה.

Baruch atah, Adonai Eloheinu, Melech haolam,  
she-asah nisim laavoteinu v'imoteinu bayamim hahaeim baz'man hazeh.

Blessed are You, Adonai our God, Sovereign of all,  
who performed wondrous deeds  
for our ancestors in days of old at this season.

## FOR FIRST NIGHT ONLY:

ברוך אתה יי אלהינו מלך העולם, שהחיינו וקיימנו  
והגיענו לזמן הזה.

Baruch atah, Adonai Eloheinu, Melech haolam,  
shehecheyanu v'kiy'manu v'higianu laz'man hazeh.

Blessed are You, Adonai our God, Sovereign of all, for giving us life,  
for sustaining us, and for enabling us to reach this season.



# Traditional Chanukah Songs

One of the traditions of celebrating Chanukah is to sing songs after the candles have been lit. We've included some of the most time-honored Chanukah folk songs, so you can sing along! (Reprinted from ReformJudaism.org)

## Maoz Tzur

Ma'oz tzur yeshu'ati,  
lecha na'eh leshabe'ach,  
tikon beit tefilati,  
vesham todah nezabe'ach.  
Le'et tachin matbe'ach  
mitzar hamenabe'ach.  
Az egmor  
beshir mizmor  
chanukat hamizbe'ach

### English Translation:

Rock of Ages let our song  
Praise (your) saving power;  
Thou amidst the raging foes;  
(You were) our sheltering tower  
(Our sheltering tower).  
Rock of Ages let our song  
Praise Thy saving power;  
Thou amidst the raging foes;  
(You were) our sheltering tower  
(Our sheltering tower.)

## Chanukah Oh Chanukah

Oh Chanukah, Oh Chanukah  
Come light the menorah  
Let's have a party  
We'll all dance the horah  
Gather 'round the table  
We'll give you a treat  
Dreidels to play with  
And latkes to eat.  
And while we  
Are playing  
The candles are burning low  
One for each night  
They shed a sweet light  
To remind us of days long ago.

## I Have a Little Dreidel

I have a little dreidel  
I made it out of clay  
And when it's dry and ready  
Then dreidel I shall play!

(Chorus)

Oh dreidel, dreidel, dreidel  
I made it out of clay  
And when it's dry and ready  
Then dreidel I shall play!

My dreidel's always playful  
It loves to dance and spin  
A happy game of dreidel  
Come play now, let's begin!

It has a lovely body  
With legs so short and thin  
And when my dreidel's tired  
It drops and then I win!

# Classic Potato Latkes

This recipe is for a classic, unadorned latke; the kind your Bubbe used to make. Serve them hot and make more than you think you need. They go fast!

## INGREDIENTS

- 2 large Russet potatoes (about 1 pound), scrubbed and cut lengthwise into quarters
- 1 large onion (8 ounces), peeled and cut into quarters
- 2 large eggs
- ½ cup all-purpose flour
- 2 teaspoons course kosher salt (or 1 teaspoon fine sea salt), plus more for sprinkling
- 1 teaspoon baking powder
- ½ teaspoon freshly ground black pepper
- Safflower or other oil, for frying

## PREPARATION

### Step 1

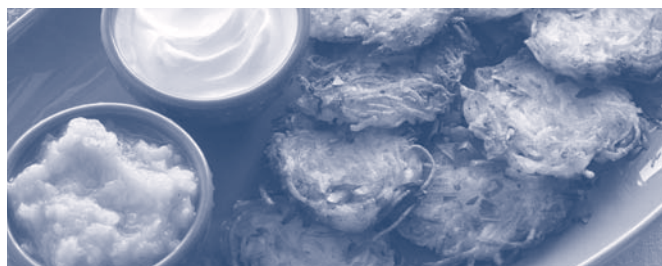
Using a food processor with a coarse grating disc, grate the potatoes and onion. Transfer the mixture to a clean dishtowel and squeeze and wring out as much of the liquid as possible.

### Step 2

Working quickly, transfer the mixture to a large bowl. Add the eggs, flour, salt, baking powder and pepper, and mix until the flour is absorbed.

### Step 3

In a medium heavy-bottomed pan over medium-high heat, pour in about 1/4 inch of the oil. Once the oil is hot (a drop of batter placed in the pan should sizzle), use a heaping tablespoon to drop the batter into the hot pan, cooking in batches. Use a spatula to flatten and shape the drops into discs. When the edges of the latkes are brown and crispy, about 5 minutes, flip. Cook until the second side is deeply browned, about another 5 minutes. Transfer the latkes to a paper towel-lined plate to drain and sprinkle with salt while still warm. Repeat with the remaining batter.



## DAYTIME PROGRAMS AT THE TEMPLE

Meet other congregants at these weekday opportunities at the temple! Questions? Contact Rebecca Reiner.

### Cooking for Congregants

**Thursday, December 7 and 14, 9:00 – 11:00 am,  
Emanu-El Kitchen**

Do you enjoy working in the kitchen and helping others at the same time? Sign up for Cooking for Congregants, led by two Emanu-El members, where you will prepare meals for congregants facing a recent illness, death, or birth.

When someone we know is going through a challenging time, our natural reaction is to help, although we may not know exactly what to do. For those in need, food frequently becomes a low priority, so the support provided by Cooking for Congregants can make a huge difference! As volunteer Sari Swig says, "There is no better gift to yourself than to help others," while a recipient of meals expresses how "It is such a lovely gesture of community... I was most grateful."

Register now to fulfill this mitzvah! All menus, ingredients, and storage containers are provided. And if you know a congregant who would benefit from a few delivered meals, please let us know.

### The Stories of Your Life: Guided Autobiography and Life Review Writing

No charge; any skill level welcomed.

**Monday, December 4, 10:00 am – Noon**

Join this monthly group to share your unique life in writing while getting to know yourself and others better. The writing is done at home, and then shared in class in a safe and structured way.

### Scrabble

No charge; drop in; all ages & experience levels welcomed.

**Mondays, December 4, 11, and 18, 11:00 am – 3:00 pm**

Do you enjoy the challenge of putting letters together to form words? Join the Scrabble group and play a rousing game or two! Expand your vocabulary along with your social circle. Bring a Scrabble set (optional) and, of course, your appreciation of words.

### Mah Jongg

No charge; drop in; all levels welcomed.

**Tuesday afternoons, December 5 and 19, 1:30 – 4:30 pm,  
Rinder Chapel**

### Bridge Club – Lessons and Game

Drop in; Cost: \$15 for members, \$20 for friends of members.

**Tuesdays, December 5, 12, and 19, 10:00 am – noon**

If you are beyond the level of beginner, join this very popular and lively group for duplicate-style bridge. Play while improving your game. No partner needed. Deborah Murphy is the instructor.

## COMMUNITY

## CONGREGANT GROUPS & GATHERINGS

Meet other congregants at these weekend and evening opportunities! Please register online. Questions? Contact Rachel Schonwetter.

### MISHPACHA

Programs for families with children ages 0–5.

### Chanukah Party

**Friday, December 15, 5:00 – 6:00 pm, Temple Emanu-El**

Join us for a special Chanukah-themed gathering at Congregation Emanu-El. There will be festive activities and snacks appropriate for your little ones. After the party, we invite you to stay for the One Shabbat service, as well as the dinner and magic show immediately following services!

## THE TRIBE FOR MEN & THE TRIBE FOR MEN 2.0

Groups of active and committed Emanu-El dads ages 30–50 with children ages 5–12 (The Tribe for Men) and children 0–5 (The Tribe for Men 2.0)

### The Tribe for Men's Annual Chanukah Night Out

**Tuesday, December 5, 7:00 – 10:00 pm, private residence  
(register for location information)**

Please come and join us for a Chanukah celebration with Cantor Arik Luck and Rabbi Ryan Bauer. Enjoy good friends, pizza, the annual tradition of bourbon, and poker!

## THE TRIBE FOR WOMEN

The Tribe for Women is a group for Congregation Emanu-El mothers of children, birth through 18 years old.

### Fried Chicken & Games Chanukah Celebration

**Thursday, December 7, 7:00 – 9:00 pm, off site (register for  
location information)**

Join the Tribe for Women, Rabbi Carla Fenves, and Rabbi Ryan Bauer for an evening of festive food, wine, and games. Rabbi Bauer will cook up his famous fried chicken for the Tribe for Women to enjoy. Please bring a bottle of wine and/or side dish to share, as well as your favorite game.

# ENGAGEMENT

## CONGREGANT GROUPS & GATHERINGS

### THE MEN'S GROUP

A cross-generational, small group experience for the men of Congregation Emanu-El

**Sunday, December 10, 9:30 – 11:30 am, private residence**  
(register for location information)

Join your fellow male congregants at a monthly gathering with a member of the clergy. These occasions to socialize and study take place at a private home. This month, you'll have the opportunity to learn with Rabbi Jonathan!

### EMANU-EL IN THE NEIGHBORHOOD

Build Emanu-El in your community with neighborhood gatherings.

Do you love your local coffee shop or farmers market? And does bringing a little Emanu-El into your neighborhood appeal to you? If you're looking for a volunteer opportunity close to home, consider becoming a Neighborhood Liaison to reach out to congregants in need, coordinate neighborhood events, and welcome new congregants in the city. Or volunteer to host a local community get-together in your home. Interested? Let us know!

### FRONT PORCH

This innovative program assembles congregants into groups and gives them the tools they need to build deep and meaningful relationships at home-hosted gatherings. The gatherings include short videos filmed by one of our rabbis and discussion questions on Jewish topics relevant to life today.

**Would you like to join a Front Porch group this fall? Fill out the interest form at <https://www.emanuelsf.org/front-porch/>.**

Stay tuned to future editions of the Chronicle for information on the following group gatherings:

- Interfaith Group: For Emanu-El interfaith members and their families.
- Women's Group: Gatherings throughout the year for all adult women of Congregation Emanu-El.

## TZEDEK COUNCIL

Meet your fellow congregants for these social justice opportunities! Questions? Contact Monica Pevzner ([mpevzner@emanuelsf.org](mailto:mpevzner@emanuelsf.org)).

### What is the Tzedek Council?

The Congregation Emanu-El Tzedek Council was launched in August, 2015 as a congregant, board, and clergy-run group, charged with the task of raising our participation and impact in the social justice arena. The Tzedek Council comprises four working groups, covering the following topics: Economic Justice, Education, Environment, and Human Rights.

### Human Rights:

#### Unity Group

Congregation Emanu-El and First African Methodist Episcopal Zion Church sponsor an African-American/Jewish Unity Group that meets monthly.

**Second Thursdays of the month, 6:00 – 7:30 pm**  
**African American Art & Culture Complex,**  
**762 Fulton Street, San Francisco**

This year, the Unity Group will partner with other organizations to push for bail reform legislation in California. We believe that this legislation, if passed, will make an enormous difference in the lives of many poor people and people of color. We would love to have you join us in this effort. You are welcome to come to meetings simply to learn more about the topic, after which you can decide how involved you'd like to be.

*continued on page 12*

As a large congregation, we recognize the importance of small group connection, so we create many opportunities for learning, socializing, and enjoying local culture together. These group gatherings generally occur in the evening hours or on weekends. Refer to the Community or Social Justice pages on our website for more information and staff contact information. Remember to register online in the MyEmanu-El portal for all of these programs (unless otherwise noted below) so we know to expect you.

Your Community Engagement Team:

Terry Kraus ([tkraus@emanuelsf.org](mailto:tkraus@emanuelsf.org), Ext. 111)

Monica Pevzner ([mpevzner@emanuelsf.org](mailto:mpevzner@emanuelsf.org), Ext. 124)

Rebecca Reiner ([rreiner@emanuelsf.org](mailto:rreiner@emanuelsf.org), Ext. 170)

Rachel Schonwetter ([rschonwetter@emanuelsf.org](mailto:rschonwetter@emanuelsf.org), Ext. 171)



## Driven to Care (Emanu-El's Monthly Collection Drives)

Donate toiletries for homeless men in winter interfaith shelters in December.

Every year, Congregation Emanu-El joins in the mitzvah of feeding the hungry by providing volunteers to shop, cook and serve dinner to over 100 homeless men for eight consecutive nights at St. Mark's Lutheran Church. Before the night ends, we give each man a toiletry bag, filled with essential needs to stay clean such as shampoo, soap, toothbrushes, etc. Next time you go to the dentist or you stay in a hotel, please ask for a donation of supplies to give to the homeless! Then drop your donation off in the bin in the temple main office foyer during the month of December.

## Jewish Family & Children Services Young Professional Food Barrel Sorters

Contributions to the JFCS Food Pantry were over the top during the 5778 High Holy Days!

JFCS would like to thank Emanu-El congregants for their food contributions over the High Holy Days! In partnership with Jewish organizations across the Bay Area, this season yielded a total of 75 barrels of food!

Seniors and persons with disabilities on fixed incomes, young families struggling to make ends meet, individuals overwhelmed by temporary financial setbacks – they all visit the JFCS food pantries on a weekly basis, and more visitors come every day. Thanks to you, JFCS can help to meet their basic needs, so they can face life's challenges with strength and hope.



**Jewish Family & Children Services Young Professional Food Barrel Sorters**

## Jewish Word Search

N N X U H O Z T A M P L Z J J  
E M E X J M I J Q Z G K E R E  
R I H A K K U N A H H O M R R  
K E G S T A R O F D A V I D U  
C O V H Z J B R L B R B R T S  
Q L S O T G D T A S O B U I A  
Q R J H S D W Y T K N S P M L  
T O R T E S A M K B E E F B E  
E S T H E R A Y E E M O Z B M  
H X C S R B C P S I E W B V T

Eight days  
Esther  
Hanukkah  
Jerusalem  
kosher  
latkes



matzoh  
menorah  
Passover  
Purim  
Star of David  
torte

## DONATE ONLINE AND SAVE POSTAGE, PAPER AND TIME!

Don't let unexpected simchas, mitzvahs, and Life-Cycle events catch you off guard!

Donating online is a quick and easy way to honor friends and family while supporting the synagogue. Just go to our website ([www.emanuelf.org](http://www.emanuelf.org)), select "Click to Donate," and follow the steps to make a credit card gift over a secure server. Be sure to include all dedication information and let us know if we should notify someone. You will receive an electronic confirmation, followed by an acknowledgment letter in the mail. That's all there is to it! If you need assistance, contact Tyler Brown in the Development Department at [tbrown@emanuelf.org](mailto:tbrown@emanuelf.org) or (415) 750-7554.



## UPCOMING EVENTS

### SAVE THE DATE!

### THIRD BAPTIST CHURCH/ CONGREGATION EMANU-EL INTERFAITH SERVICES

We are delighted to continue our historical relationship with Third Baptist Church!

**Friday, January 12, 2018**

**Pre-Oneg at 6:30 pm, Service at 7:30 pm,  
Temple Emanu-El**

**Sunday, January 14, 2018**

**10:00 am, Third Baptist Church,  
1399 McAllister St, San Francisco**

On January 12, we will host the Annual Third Baptist Church/  
Congregation Emanu-El Interfaith Services in honor of Dr. Martin  
Luther King Jr. Please join us for a pre-oneg dinner, then stay for  
services.

Join us again on Sunday morning, January 14, when Senior Rabbi  
Beth Singer will deliver the sermon at Third Baptist Church.

# KOLEINU★

## SONGS OF RESILIENCE AND RENEWAL!

**Tuesday, February 6, 2018  
Temple Emanu-El**

Cantor Attie and Cantor Luck bring beautiful  
voices from across America in an exciting musical  
collaboration. Songs of determination, defiance,  
comradery, and triumph inspire the program in  
2018. Stay tuned to our website for all the details!



## DECEMBER 2017 B'NEI MITZVAH

### Erica Assang

Bat Mitzvah: December 2

Main Sanctuary

Parents: Milton & Stephanie Assang

Torah Portion: *Vayishlah*



### Dylan Kelemen

Bar Mitzvah: December 16

Main Sanctuary

Parents: Matt Kelemen and  
Jeannette LaFors

Torah Portion: *Mikketz*



### Sarah Atkins

Bat Mitzvah: December 2

Martin Meyer Sanctuary

Parents: John & Jody Atkins

Torah Portion: *Vayishlah*



### Noah Murray Metzger

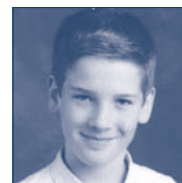
Bar Mitzvah: December 23

Martin Meyer Sanctuary

Parents:

Elias & Rebecca Murray Metzger

Torah Portion: *Vayiggash*



### Eli Kishinevsky

Bar Mitzvah: December 9

Main Sanctuary

Parents: Alex Kishinevsky &

Diana Urman

Torah Portion: *Vayeshev*



### Emilia Ozer-Staton

Bat Mitzvah: December 30

Martin Meyer Sanctuary

Parents: Cliff Staton & Elizabeth Ozer

Torah Portion: *Vayhi*



### Maximillian Benningfield

Bar Mitzvah: December 9

Martin Meyer Sanctuary

Parents: Milo & Susanna Benningfield

Torah Portion: *Vayeshev*



### Mimi Seligman

Bat Mitzvah: December 16

Martin Meyer Sanctuary

Parents: Adam & Hilary Seligman

Torah Portion: *Mikketz*



## CELEBRATING A SHEHECHEYANU MOMENT?

Congregation Emanu-El is an ever-present partner in the transitional moments of our members' lives. Be it a baby naming or brit milah, a bar or bat mitzvah, a conversion or wedding ceremony, or a recovery from illness, Emanu-El clergy and staff strive to ensure that each sacred "Shehecheyanu Moment" is deeply fulfilling and personal. A donation to the Emanu-El Life-Cycle Fund is a beautiful way to mark a personal milestone, to honor friends or family celebrating a happy experience, or to show gratitude for the services provided by our clergy during these profound moments. Please donate online at [www.emanuelsf.org](http://www.emanuelsf.org) or call the Development office at (415) 750-7554.



## MAZEL TOV TO OUR MEMBERS WHO HAVE EXPERIENCED JOY

Laura Salzberg Grant and Jonathan Grant on the birth of their son, Noah Henry Grant

Wrenn Levenberg and Aaron Andelman on the birth of their son, and Patricia and Richard Levenberg on the birth of their grandson, Levi Adler Andelman

Natalia Daniel and Oded Pelled on the birth of their daughter, Liya Pelled

Lina Lozana Hacmon and Moran Hacmon on the birth of their son, Liam Daniel Hacmon

Elaine and Steven Weiner on the birth of their son, Charles Michael Weiner

## CONDOLENCES TO OUR MEMBERS WHO HAVE SUFFERED RECENT LOSSES

Rabbi Sydney Mintz on the death of her grandmother, and Eli and Gabriel Newbrun-Mintz on the death of their great-grandmother, Patricia Sanders

Mark Oscherwitz (Susan) on the death of his brother, Stan Osher

Susan Kaplan on the death of her husband, Richard Kaplan

Lori Coleman (Andrew) on the death of her mother, and Hannah and Olivia Coleman on the death of their grandmother, Barbara Merle Cowen

Susan and David Dossetter on the death of their son, and Benjamin, Asher, Clara, and Violetta Dossetter on the death of their brother, Jeremy Dossetter

Natalya Vilikhina (Alexander Popovich) on the death of her mother, and Katherine and Paul Popovich on the death of their grandmother, Klavdiya Vilikhina

## CONGRATULATIONS TO OUR MEMBERS ON THEIR ACHIEVEMENTS

Dr. Steven Pantilat, founding director of the UCSF Palliative Care Program, on the publication of his new book, *Life After the Diagnosis: Expert Advice on Living Well with Serious Illness for Patients and Caregivers*

Paula Pretlow on being named a trustee to the Harry and Jeanette Weinberg Foundation, one of the largest private foundations in the United States

Rabbi Stephen Pearce on being honored by the San Francisco Food Bank at the National Philanthropy Day Luncheon

Elliott Felson on being named the Chair, Board of Trustees of The Contemporary Jewish Museum in San Francisco

Gale Mondry on being named this year's Judith Chapman Memorial Women's Leadership Award recipient by the Jewish Community Federation and Endowment Fund

## NEW MEMBERS - Welcome!

Mr. Joachim Bechtle, Mrs. Nancy Bechtle • Tristan Bourgade, Mrs. Eileen Blum Bourgade, Julien Bourgade, Benjamin Bourgade • Mrs. Trudy Burger, Mr. Joseph Burger • Ms. Jessica Furr • Sonia Glass, Alma Glass, Mrs. Kate Glass, Dr. Dan Glass • Ms. Julia Kaplan, Ms. Marjory Kaplan • William Laguana, Thomas Laguana, Mrs. Naomi Laguana, Mr. Sharky Laguana • Ms. Sarena Lesem • Ms. Rebekka Paisner • Ms. Ally Sillins • Mr. Benjamin Srour • Ms. Kate VanZanten

## REJOINED MEMBERS - Welcome Back!

Mrs. Mattie Alpertson • Julia Perlman, Ms. Michele Fishbein • Mr. Nima Gabbay, Ms. Nelda Gabbay, Ms. Nancy Gabbay • Mr. Allan Lerch • Mr. Peter O'Sullivan, Tatum O'Sullivan, Ms. Nava O'Sullivan, Jack O'Sullivan • Ms. Cynthia Ostroff

# THANK YOU TO OUR DONORS

## **GENERAL FUND** - used where the need is the greatest at the Temple.

Ms. Kendal Agins	in observance of Donald Agins' Yahrzeit
Mrs. Rochelle Anixter	in observance of Estelle Greenberg's Yahrzeit
Mr. and Mrs. Alex Buchler	in observance of Daniel Buchler's Yahrzeit
Ms. Trudy Cohn	
Ms. Zeva Cohn	in memory of Harold and Ellen Haas
Ms. Jill Nisson and Mr. Herk Confer	in observance of Susan Nisson's Yahrzeit
Dr. Michael and Ms. Sharon Dans	
Suzanne Delehanty	in memory of Nina Jaffe Gruen
Paul and Joyce Desrochers	in memory of Nina Gruen
Michele Dinoia	
Mrs. Victoria Dobbs	
Mr. Lawrence Edelstein	in honor of the Edelstein Family
Ms. Jennifer Ehrlich and Mr. Alex Cohen (2)	in memory of David Woolf
Mr. Joseph Ehrman III and Mrs. Diane Ehrman	in observance of Lester L. Roth's Yahrzeit
Mr. Albert and Ms. Eleanor Fraenkel	in observance of Felix Fraenkel's Yahrzeit
Dr. Brenda Friedler	in honor of Nan Barrett's recovery from illness
Mr. Clifford and Ms. Barbara Gerber	in observance of Ann and Sam Ettlinger's Yahrzeits
Lay and Janet Gibson	in memory of Nina Gruen
Ms. Pamela and Mr. Paul Ginocchio	in observance of Lawrence J. Ginocchio's Yahrzeit
Mr. and Mrs. Philip Graham	in observance of Genevieve Goodman's Yahrzeit
Nannette Griswold	in memory of Nina Gruen
Mrs. Mary Haas	in observance of Morrey Anker's Yahrzeit
Tim and Karen Hefler	in memory of Nina Jaffe Gruen
Mary and Mr. Ross Hopper	in memory of Nina Gruen
Ali Howard	
Mr. and Mrs. Daniel Klionsky	in observance of Macia Feldman's Yahrzeit
Ms. Susan L. Rothstein and Mr. John Koepfel	in memory of Sylvia W. Rothstein
Mrs. Joyce Lampert	in observance of Fritz and Max Steinberg's Yahrzeits
Mr. and Mrs. James Lazarus	in memory of Clifford Barbanell
Mr. and Mrs. Paul Leiber	in observance of Rose Leiber's Yahrzeit
Dr. and Mrs. Gershon Levinson	in observance of Elizabeth Schweninger's Yahrzeit
Mr. Richard Levy	in observance of Esther H. Levy's Yahrzeit
Diane Oshima and Paul Maltzer	in memory of Nina Gruen
Mr. Steve Lipton and Ms. Robbin Mashbein	in observance of Alice Mashbein's Yahrzeit
Mr. Steve Lipton and Ms. Robbin Mashbein	in observance of Victor Mashbein's Yahrzeit
Mr. Arthur Fudem and Ms. Arlene Miller	in observance of Ken Miller's Yahrzeit
Wendy Nichamin	
Seth Rockman and Tara Nummenda	in memory of Nina Gruen
Ms. Frana Price and Mr. Rick Ohlrich	in celebration of Terry Kraus' birthday
Shotgun Players	in memory of Nina Gruen
Mitchell and Sharyl Portugal	in appreciation of Rosh HaShanah Services
Jane and Bill Reynolds	in memory of Nina Gruen
Saul and Barbara Rockman	in memory of Nina Gruen
Stan Ross	in memory of Nina Gruen
Dr. and Mrs. Thomas Sampson	in memory of Curtis Sampson
San Francisco Bay Area Transportation Association	in memory of Nina Jaffe Gruen

Mr. and Mrs. Barry Schneider	in observance of Merv and Yetta Schneider's Yahrzeits
Randee Seiger	
Dr. and Mrs. James Shapiro	in memory of Beatrice Schimmel
Mr. and Mrs. John Siegel	in observance of Lawrence Israel's Yahrzeit
Mrs. Alida Silverman	in honor of the Temple for hosting Mah Jong
Mr. Bruce Spiegelman	in observance of Craig Spiegelman's Yahrzeit
Mr. Bruce Spiegelman	in observance of Betty Mae Spiegelman's Yahrzeit
Candis Stern	in memory of Nina Gruen
Mrs. Sylvia Storey	in memory of Wesley Fastiff
Mrs. Sylvia Storey	in memory of Myrna Frankel
Edward Storm	in memory of Nina Gruen
Mr. Joseph Taylor and Ms. Linda Liebschutz	in observance of Rosemary Taylor's Yahrzeit
Mr. and Mrs. Itamar Terem	in observance of Devora Rosen's Yahrzeit
Ms. Joan Titus	in observance of Genevieve Goodman's Yahrzeit
Ms. Victoria Treyger	
Mr. Philip Ward	in observance of Diane Ward's Yahrzeit
Ms. Elizabeth Winograd	in memory of Elliott C. Winograd's Yahrzeit

## **CANTORS' MUSIC FUND** - supports the Congregation's Music program and is used for charitable giving at the Cantors' discretion.

Mrs. Lisa and Mr. Chris Babel	in honor of Ethan Babel's Bar Mitzvah
Dr. and Mrs. Leonard Brant	in observance of Mimi Brant's Yahrzeit
Dr. and Mrs. Leonard Brant	In observance of Ginger Brant's Yahrzeit
Mr. Joseph Breall	in honor of Alessandra Breall's Bat Mitzvah
Ms. Marilyn Ersepke	in honor of Cantor Roslyn Barak's Album release
Mr. and Mrs. David Feinberg	in honor of Morgan Feinberg's Bat Mitzvah
Mr. Andrew Freeman and Mrs. Kerry Lanigan-Freeman	in honor of Erin Friedman's Bat Mitzvah
Jonathan and Jena Goldman	in appreciation of Cantor Luck for his guidance during the wedding
Peter and Ann Goodman	in appreciation of Cantor Luck for the beautiful wedding of Jon and Jena Goldman
Rabbi Stuart and Yvonne Lasher	in honor of Cantor Luck's music and choir
Mrs. Barbara Marshall	in observance of Myron H. Marshall's Yahrzeit
Ms. Andrea Rupprecht	in honor of Cantor Arick Luck
Mrs. Liz Shalev and Mr. Monte Zweben	in honor of Julia Reese Shalev's Bat Mitzvah
Ms. Laura Weinstein and Mr. Mark Lorenzen	in honor of Joseph Lorenzen's Bar Mitzvah
Mr. Douglas Winthrop and Dr. Yamilee Bermingham	in honor of Zadie Winthrop's Bat Mitzvah

## **EMANU-EL COMMUNITY SERVICE FUND** - promotes and supports social action and community service related programs.

Bob Bennett	in celebration of Dylan Kelemen's Bar Mitzvah
Mr. and Mrs. Charles Bleadon (2)	
Mrs. Stella Daniels	in observance of Mildred Chevillat's Yahrzeit
Dr. and Mrs. Stuart Eisendrath	in observance of Steve Eisendrath's Yahrzeit
Kimberly Geil	in celebration of Dylan Kelemen's Bar Mitzvah
Mimi Grant	in celebration of Dylan Kelemen's Bar Mitzvah
Peter Hebert	in celebration of Dylan Kelemen's Bar Mitzvah
Kenneth Hirsch	

# THANK YOU TO OUR DONORS

Mr. and Mrs. Scott Kahn	in honor of Dana Corvin receiving Sinton Disguished Leadership Award
Dr. Joel and Ms. Amy Kassiola	in honor of reading the Torah during Yom Kippur
George Pavel	in celebration of Dylan Kelemen's Bar Mitzvah
Nancy Scheinholtz	in honor of Stuart Scheinholtz for being a fantastic brother
Mr. Mark Schlesinger and Dr. Christine Russell	in honor of Rosie and Nate Yanowitch's B'nei Mitzvah
Frank Schnidman	in memory of Nina Gruen
Scott Solomon	in memory of Martina Knee
Mrs. Roselyne Swig	in observance of Richard L. Swig's Yahrzeit
Ms. Sari Swig	in memory of Jeremy Dossetter
Gregg Weinberg	in celebration of Dylan Kelemen's Bar Mitzvah
Janice Wood	in observance of Marsha Wood's Yahrzeit

## FOR THE ROOSEVELT FOOD PANTRY

Dr. Leslie Friedman and Mr. Jonathan Clark	in memory of Keith Clark
Mr. and Mrs. William Scott	in celebration of Ariana Estoque's birthday

**EMANU-EL LIFE-CYCLE FUND** - enables all congregants to celebrate significant milestones, regardless of economic circumstances.

Daniel Skilken	in celebration of Megan Alley and Aaron Skilken's wedding
The Uziel Family	In honor of the Bar Mitzvah of Micah Jacob Uziel
Ms. Eva Sheppard Wolf and Mr. Sven Wolf	in honor of the Bar Mitzvah of Matthew Bejmamin Wolf

**LUDWIG ALTMAN ORGAN FUND** - provides for music programs and maintenance work on the Temple's organs.

Mr. Joseph Ehrman III and Mrs. Diane Ehrman	in observance of Patricia E. Ehrman's Yahrzeit
---	--

**REBECCA AND LUDWIG ROSENSTEIN ADULT EDUCATION FUND** - supports a variety of Emanu-El's Adult Education Programs.

Mr. and Mrs. James Rogers	in observance of Ernest S. Rogers' Yahrzeit
---------------------------	---

**ONEG SHABBAT AND KIDDUSH FUND** - provides for the weekly Shabbat Oneg, Kiddush, and other congregational receptions.

Mr. Joseph Breall	in honor of Alessandra Breall's Bat Mitzvah
Mrs. Rachel and Mr. Efreim Bycer	in honor of Shayna Lielle Bycers' baby naming
Mr. Joseph Ehrman III and Mrs. Diane Ehrman	in memory of Leslie Roth Appleton
Mr. and Mrs. David Feinberg	in honor of Morgan Feinberg's Bat Mitzvah
Mr. Marc Katz and Ms. Laura Gasser	in honor of Max Katz' Bar Mitzvah
Ms. Alison Datz and Mr. Joel Kamisher	in observance of Hyman Datz' Yahrzeit
Ms. Deborah Mann	in memory of Dr. Maurice Mann
Mr. Adam and Ms. Hilary Seligman	in honor of Mimi Seligman's Bat Mitzvah
Mrs. Liz Shalev and Mr. Monte Zweben	in honor of Julia Reese Shalev's Bat Mitzvah
Ms. Jessica Vapnek	in honor of David Vapnek's Bar Mitzvah
Ms. Laura Weinstein and Mr. Mark Lorenzen	in honor of Joseph Lorenzen's Bar Mitzvah
Mr. Douglas Winthrop and Dr. Yamilee Bermingham	in honor of Zadie Winthrop's Bat Mitzvah

**RABBIS' FUND** - used by the clergy and senior staff for charitable giving.

Mrs. Lisa and Mr. Chris Babel	in honor of Ethan Babel's Bar Mitzvah
Janis Blauer-Chima	in celebration of the baby naming of Teo Chima, and in appreciation of Rabbi Jonathan Singer
Andrew Bossov	in honor of Rabbi Jonathan Singer
Mr. Joseph Breall	in honor of Alessandra Breall's Bat Mitzvah
Mrs. Rachel and Mr. Efreim Bycer	in honor of Shayna Lielle Bycer's baby naming
Mrs. Lillian Cape	
Mr. and Mrs. David Feinberg	in honor of Morgan Feinberg's Bat Mitzvah
Mr. and Mrs. Zachary Felson	in celebration of Gabriel Felson's baby naming
First Republic Bank	in memory of Nina Gruen
Mr. Andrew Freeman and Mrs. Kerry Lanigan-Freeman	in honor of Erin Freeman's Bat Mitzvah
Dr. Brenda Friedler	in honor of Rabbi Stephen Stephen,; Laurie, Sarah, and Michael Pearce
Dr. Brenda Friedler	in honor of Harold Miller's recovery from illness
Mr. and Mrs. Robert Futernick	in observance of Irene Ornstein's Yahrzeit
Peter and Ann Goodman	in honor of Rabbi Jonathan Singer
Laura Grant	in honor of Rabbi Pearce
Dr. Claude Gruen	in memory of Nina Gruen, and in appreciation of Rabbi Beth Singer
Mr. and Mrs. Leon Kramer	in honor of Tyler Alexandra Kramer's baby naming and Rabbi Mintz
Etana Kunovsky	in honor of Rabbi Beth Singer and Rabbi Jonathan Singer
Mrs. Shirley Lippman	in observance of Byron Lippman and Ronald Friedken's Yahrzeits
Susie and Joel Litman	in celebration of Carly and Scott Goldman's wedding
Ms. Sonia Melnikova-Raich and Mr. David Raich	in observance of the Yahrzeits of Adelyn and Abraham Raich, and Leah and Yerkhim Israilevich
Mr. Jonathan Nordlicht	in honor of the Congregation's Rabbis and Torah Study
Susan and David Richman	in honor of Rabbis Jonathan Singer and Lawrence Kushner
Dr. Allen Root	in honor of my children and grandchildren
Mr. and Mrs. William Rothmann	
Bernard Salzberg	in honor of Noah Grant's baby naming
Mr. Richard Sax	in observance of Ben Rudner's Yahrzeit
Steven and Judith Schumeister	in honor of Andy Schumeister and Jason Mooty's marriage
Mr. Adam and Ms. Hilary Seligman	in honor of Mimi Seligman's Bat Mitzvah
Mrs. Liz Shalev and Mr. Monte Zweben	in honor of Julia Reese Shalev's Bat Mitzvah
Mr. Gary and Ms. Gayle Strang	in observance of Kyle Harty Strang's Yahrzeit
Ms. Sari Swig	in memory of Richard Kaplan
Susan and Richard Ulevitch	in honor of the beautiful and inspiring Yom Kippur Services
University of San Francisco (2)	in honor of Rabbi Fenves
Janet Varon and Eduardo Munoz	in honor of Rabbi Beth Singer
Mr. Albert Villa (2)	
Ms. Laura Weinstein and Mr. Mark Lorenzen	in honor of Joseph Lorenzen's Bar Mitzvah
Mr. Douglas Winthrop and Dr. Yamilee Bermingham	in honor of Zadie Winthrop's Bat Mitzvah
Ms. Mary Woten	in celebration of my gratitude for the Temple community
Mr. and Mrs. Naftali Zisman	in observance of Isaac Zisman's Yahrzeit

continued on page 19



# DECEMBER CALENDAR

For more information, please call us at (415) 751-2535 or visit [www.emanuelf.org](http://www.emanuelf.org). All events take place at Temple Emanu-El unless marked Not at Temple (NAT).

Sunday	Monday	Tuesday	Wednesday	Thursday	Friday	Saturday
					<p>1 9:30 am Mazel Tots! (MMR)</p> <p>5:30 pm First Friday Under Five Shabbat Service (MMS)</p> <p>5:30 pm Pre-Oneg (Main)</p> <p>6:00 pm Classic Shabbat Service Rabbi Pearce (Main)</p> <p>6:15 pm Simchat Shabbat Dinner</p>	<p>2 9:15 am Torah Study (Library)</p> <p>9:15 am Torah Study with Rabbi Kushner (R55)</p> <p>10:30 am Shabbat Morning Service with Bat Mitzvah Erica Assang (MMS)</p> <p>10:30 am Shabbat Morning Service with Bat Mitzvah Sara Atkins (Main)</p>
3	<p>4 9:30 am Mazel Tots (MMR)</p> <p>10:00 am Stories of Your Life</p> <p>11:00 am Scrabble (5th floor)</p>	<p>5 9:30 am Side by Side</p> <p>10:00 am Morning Bridge</p> <p>1:30 pm Mah Jongg (Rinder Chapel)</p> <p>7:00 pm Tribe for Men Annual Chanukah Party</p>	<p>6 Noon Brown Bag Study</p> <p>4:00 pm Limonata and Learning (NAT)</p>	<p>7 9:00 am Cooking for Congregants</p> <p>9:30 am Side by Side</p>	<p>8 9:30 am Bagels and Babies</p> <p>5:30 pm Pre-Oneg (MMR)</p> <p>6:00 pm One Shabbat Service (MMS)</p> <p>8:30 pm Young Adult Late Shabbat (MMS)</p>	<p>9 9:15 am Torah Study (Library)</p> <p>9:15 am Torah Study with Rabbi Kushner (R55)</p> <p>10:30 am Shabbat Morning Service with Bar Mitzvah Eli Kishinvesky (Main)</p> <p>10:30 am Shabbat Morning Service with Bar Mitzvah Max Benningfield (MMS)</p>
<p>10 3:00 pm Advancing the Cause: Prager vs Elsner</p> <p>9:30 am Men's Group (NAT)</p>	<p>11 9:30 am Mazel Tots (MMR)</p> <p>11:00 am Scrabble (5th floor)</p>	<p>12 9:30 am Side by Side</p> <p>10:00 am Morning Bridge</p> <p>5:30 pm Doc's Lab Chanukah! (NAT)</p>	<p>13 6:00 pm Chanukah Pop Up Menorah Lighting (Books Inc. at Laurel Village)</p>	<p>14 9:00 am Cooking for Congregants</p> <p>9:30 am Side by Side</p> <p>6:00 pm Chanukah Pop Up Menorah Lighting (Noe Valley)</p> <p>6:00 pm Marin Chanukah Pop Up Menorah Lighting (Book Passage in Corte Madera)</p>	<p>15 9:30 am Bagels and Babies</p> <p>5:00 pm Chanukah party for Mishpacha families</p> <p>5:30 pm Pre-Oneg (MMR)</p> <p>6:00 pm One Shabbat Service</p> <p>7:15 - 9:00 pm Chanukah Celebration Dinner</p> <p>8:30 pm Young Adult: 5th Crazy Night Chanukah Party (NAT)</p>	<p>16 9:15 am Torah Study (Library)</p> <p>9:15 am Torah Study with Rabbi Kushner (R55)</p> <p>10:30 am Shabbat Morning Service with Bar Mitzvah Dylan Kelemen (Main)</p> <p>10:30 am Shabbat Morning Service with Bat Mitzvah Mimi Seligman(MMS)</p>
17	<p>18 11:00 am Scrabble (5th floor)</p>	<p>19 9:30 am Side by Side</p> <p>1:30 pm Mah Jongg (Rinder Chapel)</p>	20	<p>21 9:30 am Side by Side</p>	<p>22 9:30 am Bagels and Babies</p> <p>5:30 pm Pre-Oneg (MMR)</p> <p>6:00 pm One Shabbat Service (MMS)</p>	<p>23 9:15 am Torah Study (Library)</p> <p>9:15 am Torah Study with Rabbi Kushner (R55)</p> <p>10:30 am Shabbat Morning Service with Bar Mitzvah Noah Murray Metzger (Main)</p>
<p>24</p> <p>31</p>	<p>25 Office is closed</p>	<p>26 Office is closed</p>	<p>27 Office is closed</p>	<p>28 Office is closed</p>	<p>29 Office is closed</p> <p>5:30 pm Pre-Oneg (MMR)</p> <p>6:00 pm One Shabbat Service (MMS)</p>	<p>30 9:15 am Torah Study with Rabbi Kushner (R55)</p> <p>10:30 am Shabbat Morning Service with Bat Mitzvah Emilia Ozer-Staton</p>

# THANK YOU TO OUR DONORS

*continued from page 17*

## OTHER GIFTS

Dr. Anita Josefa Barzman MD	to help provide for a new Torah cover for the Synagogue's new Holocaust era Torah
Mr. Barry Bram and Ms. Mary McLain	to help provide for a new Torah cover for the Synagogue's new Holocaust era Torah
Mr. Laurent Goldsztejn and Ms. Deborah Stein	to support Israel Action Committee Programming
Mr. Jonathan Holman and Ms. Diana Grand	to help provide for a new Torah cover for the Synagogue's new Holocaust era Torah
Jewish Community Federation and Endowment Fund	to provide for senior transportation to the High Holy Days
Mrs. Eve Masonek	to help provide for a new Torah cover for the Synagogue's new Holocaust era Torah
Ms. Susan Moldaw and Mr. Bob Stallings	to help provide for a new Torah cover for the Synagogue's new Holocaust era Torah
Mr. and Mrs. Robert Newman	to help provide for a new Torah cover for the Synagogue's new Holocaust era Torah
Dr. Emma Farr Rawlings and Mr. James Farrell	to help provide for a new Torah cover for the Synagogue's new Holocaust era Torah
Mr. and Mrs. Richard Rosenberg	to help provide for a new Torah cover for the Synagogue's new Holocaust era Torah
Mr. Stephen and Ms. Marcia Ruben	to help provide for a new Torah cover for the Synagogue's new Holocaust era Torah
Ms. Ann Rubin	to help provide for a new Torah cover for the Synagogue's new Holocaust era Torah
Mrs. Gunda Trepp	to help provide for a new Torah cover for the Synagogue's new Holocaust era Torah
Dr. and Mrs. Howard Winer	to help provide for a new Torah cover for the Synagogue's new Holocaust era Torah
Mr. and Mrs. Naftali Zisman	to support Israel Action Committee Programming

## YOUTH AND FAMILY

### YOUTH AND FAMILY EDUCATION

We call our program Youth and Family Education because family is an extremely important component. Rather than merely dropping off their children, adult family members spend at least two Sundays each year engaged in Jewish learning. On some mornings, the adults have the opportunity to spend an hour with one of our rabbis or a local expert, exploring a topic at a deep level while the children engage in an age-appropriate experience with their teachers. This is followed by an activity that involves the whole group. So far this year, 1st graders and their families have toured the temple, the preschoolers and their families have learned about their Hebrew names and made beautiful plaques, and the kindergarteners and their families have created Shema pillowcases.

On other family days, a group goes out into the community to perform mitzvot. The 2nd grade group spent a morning packaging food at the San Francisco Food Bank, and the 3rd graders delivered disaster kits to seniors living in nearby neighborhoods through Meals on Wheels San Francisco. Many other exciting programs inside and outside the building are planned for the rest of the year!

In Beyachad (Hebrew for "together"), 4th and 5th graders and their adults devote approximately two Sundays a month to family-based learning. This year, they are delving into their personal Jewish identities by learning Jewish history through the lens of our peoplehood and immigration to the Bay Area. This group also takes advantage of educational opportunities, both at the temple and in the community, with trips to the cemetery in Colma and a scavenger hunt through Jewish San Francisco.

## HAVE YOU REMEMBERED THE TEMPLE IN YOUR ESTATE PLAN?

We invite you to become a member of the Emanu-El Legacy Circle. If you have included the congregation in your estate planning through a bequest, or as a beneficiary of an insurance or retirement plan, you already qualify as a member of our Legacy Circle. Just let us know that you have done so.

As a member of this esteemed circle of supporters, you will join others in proclaiming your commitment to the life and mission of Congregation Emanu-El. If you have made a provision for the congregation in your will, or would like to speak with someone about the Emanu-El Legacy Circle, please contact Senior Development Director Lani Zinn at (415) 750-7557.



Congregation Emanu-El  
Two Lake Street  
San Francisco, CA 94118  
[www.emanuelsf.org](http://www.emanuelsf.org)

PERIODICAL

**We are a vibrant, sacred Jewish community that is dedicated to advancing our members' lifelong involvement in Judaism through worship, learning, good deeds, and congregant to congregant connections.**

Jonathan Singer,  
Richard and Rhoda Goldman Senior Rabbi  
Beth Singer,  
Richard and Rhoda Goldman Senior Rabbi  
Sydney B. Mintz, Rabbi  
Ryan Bauer, Rabbi  
Carla Fenves, Rabbi  
Jason Rodich, Rabbi  
Marsha Attie, Cantor  
Arik Luck, Cantor  
Roslyn Barak, Senior Cantor Emerita  
Rabbi Lawrence Kushner, Emanu-El Scholar  
Stephen Pearce, Senior Rabbi Emeritus  
David N. Goldman, Executive Director  
and General Counsel  
Terry Kraus, FTA, Director of  
Membership Services  
Elena Gary, Chief Financial Officer  
Ariana Estoque, M.Ed, Director of  
Adolescent and Adult Education  
Flora Kupferman, Interim Director of  
Youth Education  
Svetlana Leykin,  
Director of Facilities and Special Events  
Penny Mika, Director of Operations  
and Office Administration  
Julie Weinberg, Director of Development  
Lani Zinn, Senior Director of Development

#### **Members of the Board of Directors**

President, Donny Friend  
Vice President, Mark Lehmann  
Vice President, Paul Zarefsky  
Treasurer, Sasha Kovriga  
Secretary, Erika Coplon

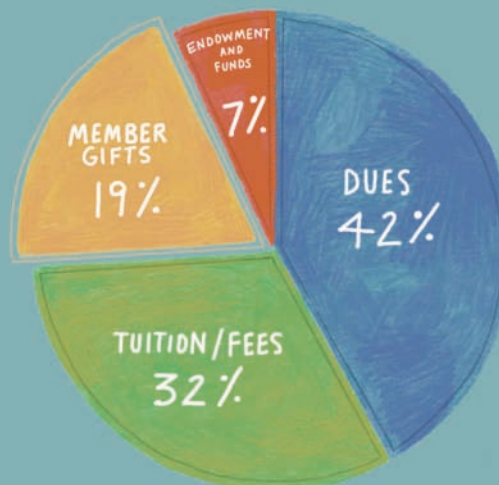
Dale Boutiette	Rachel Melman
Sandi Bragar	Abby Porth
Steve Cohen	Paula Pretlow
Barrett Cohn	Joel Roos
Stuart Corvin	Jackie Safier
Jill Einstein	Rita Semel
Lara Ettenson	Jim Shapiro
Alan Greinetz	

The Temple Chronicle (USPS 023-317) is published monthly except June and July for \$36 per year by The Congregation Emanu-El, Two Lake Street, San Francisco, CA 94118. Periodicals Postage Paid at San Francisco, CA, and at additional mailing offices

POSTMASTER: Send address changes to The Temple Chronicle at Congregation Emanu-El, Two Lake Street, San Francisco, CA 94118.

## **CREATING AND SHARING OUR BOUNTY**

Torah, worship, and acts of loving kindness guide us to create a synagogue that makes a difference in the Bay Area.



**Help us reach our required goal to keep Emanu-El financially stable and thriving by giving generously to our 2018 Impact Fund!**

Please Note:  
We are closing the last week of December, so please make sure you submit your online payments/donations ([www.emanuelsf.org/impact](http://www.emanuelsf.org/impact)) by no later than December 31.

For more information, call (415) 750-7554.

**Without TORAH  
There is No Bread,  
Without BREAD  
There Is No Torah.**

**Pirke Avot 3:21**

**IMPACT!**  
**Emanu-El**