

Emanu-El ^S_F

Let my people go!



**MAR
2** Imam Abdullah
Antepli, Muslim
Scholar



**MAR
25** Klezmatics with special
guest: Joshua Nelson,
Prince of "Kosher Gospel"



Exclusive interview with Susan
Moldaw, Lay Chaplain

UPCOMING EVENTS

JEWS AND MUSLIMS IN AMERICA: THE CHALLENGES AND OPPORTUNITIES OF FRIENDSHIP

Muslim scholar Imam Abdullah Antepli will deliver our Classic Shabbat sermon.

Friday, March 2, 6:00 pm | Main Sanctuary

Imam Abdullah Antepli is a senior fellow of Jewish-Muslim relations at the Shalom Hartman Institute and co-director of the Muslim Leadership Initiative. He serves as the chief representative for Muslim affairs and adjunct faculty of Islamic studies at Duke University, where from 2008 to 2014 he served as the university's first Muslim chaplain, one of only a handful of full-time Muslim chaplains at U.S. colleges and universities.



Ephraim Margolin

John Rothmann

JOHN ROTHMANN IN CONVERSATION WITH EPHRAIM MARGOLIN

Sunday, March 11, 9:30 – 11:00 am | Main Foyer

Local attorney, activist, and scholar Ephraim Margolin will speak about the various expressions of Zionism: from biblical to political, from cultural to modern religious, from spiritual to nationalist.

ANSHEI MITZVAH – ADULT B'NEI MITZVAH March 10 | 10:30 am | Main Sanctuary

We honor Francisco Caravayo-Strober, Joshua Endler, Kristen Namimoto-Posner and Susan Rothenberg as they are called to read Torah after an 18-month preparation with Cantors Attie and Luck. Mazal Tov!



Francisco Caravayo-Strober, Kristin Eriko Posner, Susan Rothenberg

RABBI'S LETTER

By Richard and Rhoda Goldman Senior Rabbi Jonathan Singer

March 2018 is unusual in that Purim and Passover both fall within the same Gregorian calendar month. Each of these two holidays has its own specific text. As well, each calls for a “feast,” encouraging us to drink fruit of the vine while enjoying symbolic foods.

It is customary for Jews to engage in the “latke vs. hamantaschen” debate, humorously showing off our intellectual pugilism with regard to savory and sweet flavors (for me, the latke always wins). But when it comes to a matchup between the traditional foods of Purim and Passover — that is, matzah vs. hamantaschen — you would, of course, expect the sweet pastry to easily beat the rather bland cracker-like item as the desired culinary choice. Especially when it comes to someone like me who doesn't particularly enjoy matzah in any of its many forms (egg, shmora, whole wheat, or gluten free). However, because the consumption of matzah for one week is commanded in the Torah, matzah remains the foodstuff we eat more of. We are instructed to eat *lechem oni* (“bread of poverty” or “bread of affliction”) for seven days, to remember that we were once slaves in Egypt and that now we are free. In other words, while noshing on hamantaschen — whether strawberry, poppy seed, or date filled — is fun, eating matzah is essential.

The consumption of our ritual unleavened bread is not just an act of culinary memory about our redemption, however. It is also a tangible reminder that we should embrace humility and gratitude, that we should honor our descendance from slavery and appreciate the freedom we now enjoy as a precious gift from God that should be protected and shared with others.

Many of us are accustomed to eating matzah only at seders, or perhaps at a matzah-brei brunch. But our tradition bids

us to eat it in place of bread throughout the entire seven days of Passover. Therefore, we should eat matzah throughout the day — in the morning with our eggs, with our lunches at work or school, and as an accompaniment to our dinners.

I ask you, as Jews of San Francisco, to consider publicly embracing this mitzvah. To proudly eat matzah in the dining area of your workplace or even as you sit at a fabulous restaurant downtown. I ask you to do this as an act of resistance against conformity, against just blending in. Let us say *hineyni* (here I am), a proud Jewish San Franciscan, who celebrates the freedom to be who I am!

I'm going to eat avocado and matzah for breakfast and matzah pizza for lunch, and I plan to carry extra matzah with me to hand out to people wherever I go. In addition, we hope to have pop-up Passover tables at various grocery stores in the days before the holiday. No, I still don't particularly like the taste of matzah, but I love what it represents. So please join me in this act of culinary memory and identity affirmation!

I hope you enjoy Purim...but get ready for Passover!

L'shalom!



RE•IMAGINE

SAVE THE DATE

JOIN US AS WE REIMAGINE DEATH!

April 16–22

Congregation Emanu-El is working in partnership with Reimagine's San Francisco conference this spring. Reimagine is co-created by a network of interested artists, storytellers, healthcare professionals, innovators, designers, organizations, and individuals, banding together to amplify the end-of-life conversation.

The “End of Life Challenge,” led by OpenIDEO's innovation portfolio in 2016, reached thousands of participants, both online and offline, helping to remove the taboo around death and dying by creating a global and solutions-oriented conversation.

This year, Reimagine will build on that experience, bringing optimism and advancement in providing a platform for the many organizations and individuals working to elevate this topic. We hope you will join us in April, at Temple Emanu-El and across the city, for a week of innovative programs and opportunities to connect with others in conversations about death.

Please join us for a special Passover musical celebration!



BROTHER MOSES SMOTE THE WATER THE KLEZMATICS WITH SPECIAL GUEST JOSHUA NELSON!

Sunday, March 25, 5:00 pm
Main Sanctuary



World renowned Grammy-winning superstars of the Klezmer world, The Klezmatics celebrate their 30th anniversary with Congregation Emanu-El as they bring us their music steeped in spiritualism and eastern European tradition while incorporating themes of social justice.

In this concert, The Klezmatics will join forces with Joshua Nelson – the “Prince of Kosher Gospel” – to explore the complexity of Jewish identity, black identity, and humankind. Age-old Hebrew Passover songs will be melded with the African soul tradition, echoing the great stylings of Mahalia Jackson.

Our wonderful community partners include Black-Jewish Unity Council, Bechol Lashon, Jewish Community Relations Council, Klez California, Museum of the African Diaspora and Third Baptist Church. This exciting, soul-stirring concert is not to be missed and perfect for the whole family.

PREMIUM TICKET: \$82 (\$50 tax deductible)
Includes reserved section premium seating, post-show reception with artists and project support

GENERAL ADMISSION: \$32

STUDENT (under 18 or with student ID): \$18

Tickets available at <http://bit.ly/2AZstR3>

Generous support for this project comes from the Ingrid D. Tauber Fund.

SPONSOR AN ONEG SHABBAT

Sponsoring an Oneg-Shabbat on Friday evening is a sweet way to honor or remember a loved one or to celebrate a *Simcha*. When you sponsor an Oneg-Shabbat, you help us welcome Shabbat with the warmth and community that are characteristic of our congregation. For more details, contact Svetlana Leykin at sleykin@emanuelf.org or call (415) 751-2541 x123.

Thank you to the following for co-sponsoring recent Oneg-Shabbat receptions:

Ellen and Edward Pollock and Marlene Mann, in honor of the Bar Mitzvah of David Mann
Judge Ina Levin Gyemant, in honor of the Bat Mitzvah of Sophia Paris and in memory of Dr. Leonard Shalin and Mildred and Manuel Levin
Kate and Allan Aks, in honor of the Bar Mitzvah of Simon Aks
Rebecca and Steve Ravel, in honor of the Bar Mitzvah of Daniel Ravel
Janet Wojcicki and Gregor Schauer, in honor of the Bar Mitzvah of Adam Franek Schauer
The Alpert Family, celebrating the birth of Marlie Jean and in memory of Murray and Ida Zuckerman

Disabled and Senior Transportation Service – First Fridays

Have you been wanting to attend the First Friday Shabbat service in the Main Sanctuary, but haven't been able to get there because you don't have a ride? In partnership with the Jewish Federation of San Francisco, the Peninsula, Marin and Sonoma Counties, we offer complimentary SilverRide transportation to and from the First Friday Shabbat service every month. Passengers are picked up at their homes and then delivered back, comfortably and safely. To arrange for a ride, email Julie Levine at julblevine@aol.com or call Terry Kraus at (415) 750-7552.

March

Friday, March 2

5:30 pm, First Friday Under Five Service
(Martin Meyer Sanctuary)

6:00 pm, Classic Shabbat Service (Main Sanctuary)

Saturday, March 3

10:30 am, Shabbat Morning Service – Bar Mitzvah, Dylan Snow (Chapel)

10:00 am, Shabbat Morning Learners service for 6th grade families (Martin Meyer Sanctuary)

Friday, March 9

6:00 pm, One Shabbat Service
(Martin Meyer Sanctuary)

8:30 pm, Young Adult Late Shabbat Service
(Martin Meyer Sanctuary)

Saturday, March 10

10:30 am, Shabbat Morning Service (Main Sanctuary)

Friday, March 16

6:00 pm, One Shabbat Service
(Martin Meyer Sanctuary)

Saturday, March 17

10:30 am, Shabbat Morning Service – Bar Mitzvah, Henrik Shragge (Main Sanctuary)

10:30 am, Shabbat Morning Service – Bar Mitzvah, Bennett Steifman (Martin Meyer Sanctuary)

Friday, March 23

6:00 pm, One Shabbat Service
(Martin Meyer Sanctuary)

Saturday, March 24

10:30 am, Shabbat Morning Service – Bar Mitzvah, Luke BloomKing (Main Sanctuary)

10:30 am, Shabbat Morning Service – Bar Mitzvah, Spencer Mosson (Martin Meyer Sanctuary)

Friday, March 30

5:30 pm, Shabbat Service (Chapel)

Saturday, March 31

10:30 am, Shabbat Morning Service (Chapel)

ADULT LEARNING OPPORTUNITIES

TAUBER SPARK!

Tuesdays, March 6, 13, and 20
6:45 – 9:00 pm



SPARK



Please visit www.emanuelf.org/spark/ to register for all sessions with our guest educators.

Join your friends, rabbis, and guest teachers for three nights of SPARK, a powerful Jewish learning opportunity that is open to entire community! Our evening will begin with schmooze time for participants to mingle and nosh, followed by a full hour to engage in one of three hot-topic SPARK study sessions with rabbis and leading guest educators. Each evening will be followed by a community-wide keynote address or seminar with special scholars/speakers.



GREG MARCUS, PH.D. – TRANSFORM YOURSELF THROUGH JEWISH WISDOM

Do you keep bumping up against challenges in your life? Imagine what it would mean to be the best version of yourself, every single day. To be

a true “mensch” – a person of extraordinary character. Harness the wisdom of the 1,000-year-old Jewish spiritual discipline of Mussar and learn how to focus on personal and spiritual growth in the midst of a busy, involved life. This highly interactive three-week program will teach your heart by DOING. You will engage in fun and easy practices that incorporate mindfulness and snippets of Jewish text into cognitive and experiential activities.

Greg Marcus is an innovative Mussar maven and the creator of “American Mussar,” a 21st-century spiritual practice for an authentic and meaningful life. He is a graduate of the Mussar Institute’s facilitator training program and has been practicing and teaching for six years. Greg offers guidance on how to lead a life of mindful harmony and spiritual integrity, drawing upon both Jewish teachings and contemporary wisdom. He has a Ph.D. from MIT, and worked for 10 years as a marketer in Silicon Valley.

ILAN VITEMBERG 70 FACES OF ISRAEL: EXPLORING ISRAEL THROUGH POPULAR CULTURE



In this unique three-session program, we will use Israeli culture as manifested in films, TV series, popular songs, and even commercials to explore some of the most challenging aspects of what it means to create a democratic Jewish state.

This program provides a safe space to express different perspectives and means for elevating knowledge about Israel.

Ilan Vitemberg was born and raised on Kibbutz Megiddo in the Jezreel Valley in northern Israel. He graduated summa cum laude from the University of the District of Columbia, with a degree in theatre arts, focusing on the use of drama in informal education. For the past 20 years, Ilan has been working with children, teens, and adults – as both a formal and informal teacher. In 1999, he moved to the San Francisco Bay Area where he immersed himself in finding new and creative ways to teach people of all ages about Judaism, Israel, and Hebrew. Most recently, Ilan was director of the Israel Education Initiative as well as director of Education Support Services at Jewish LearningWorks. Ilan lives in Oakland with his husband Peter, with whom he also acts and performs as a member of the “Up A Tree Puppetry” duo.

Note that registration is required online:

www.emanuelf.org/spark. Questions? Contact Ariana Estoque at (415) 751-2541 x307 or at aestoque@emanuelf.org.

SUE REINHOLD, PH.D. THE LESSONS OF JOSEPH



The Torah is a compelling living document whose stories have so much to teach us about living today. Perhaps no story is as dramatic, deep, and psychologically and sociologically powerful than that of Joseph, he of Technicolor Dreamcoat. Across four parshayot at the end of Genesis, the script unfurls like a Hollywood drama. A deep, three-part dive into the Joseph saga will allow us to get to questions and some tentative answers that certainly haunt our Jewish tradition and most of us, personally, as well. Who are we? What do we wrestle with internally? Can we ever leave our past behind? How do we stay resilient through dark times and see our way to the light? Who and how to marry?

Your questions will guide our discussion. We will use Torah, midrashic, and modern literary references in our discussion. Bring your own Torah or Bible if you have one, or we will provide them as well as other source text during class.

Sue Reinhold, Ph.D. was recently hired as a Managing Director of Philanthropy at the San Francisco Jewish Community Federation and Endowment Fund, where she has been charged with developing new models of delivery and engagement in Jewish philanthropy. Sue is a social entrepreneur who was a co-founder of The Kitchen SF, a startup synagogue nationally recognized as one of the most innovative Jewish organizations in the country.

All TAUBER SPARK lectures are open to public.



**EMANU-EL'S SENIOR
RABBI EMERITUS
STEPHEN PEARCE,
D.D., PH.D.**

**Tuesday, March 6
8:15 – 9:00 pm**

Lecture: "THE FIRST LAW OF JEWISH TEXTS: For every text there exists an equal and opposite text. THE SECOND LAW OF JEWISH TEXTS: They are both wrong!"

**AVELET
GUNDAR-GOSHEN**

**Tuesday, March 13
8:15 – 9:00 pm**



Avelet Gundar-Goshen is the author of *Waking Lions*, a bestselling novel in Europe and Israel that was released in the U.S. in 2017 to outstanding reviews.

Lecture: "Waking Lions: A Journey to Israel's Back Yard"



LYNNE QUITTELL, MD

**Tuesday, March 20
8:15 – 9:00 pm**

Dr. Lynne Quittell is a director at Ben-Gurion University Medical School for International Health and a pediatric pulmonologist at Columbia University College of Physicians and Surgeons.

Lecture: "Tikkun Olam Without Borders: Healing the World Through Global Medicine"

Dr. Quittell's lecture is presented in partnership with American Associates, Ben-Gurion University of the Negev.

SHALOM ALEICHEM – "PEACE BE TO YOU"

By Rachel Schonwetter, Community Engagement Professional

Approaching its 20-year anniversary, the Young Adult Community at Congregation Emanu-El has been dedicated to cultivating an inclusive place for Jews in their 20s and 30s to build a robust community, develop meaningful relationships, and deepen their Jewish identity here in the Bay Area. This past November, we were lucky enough to extend our reach to Germany, as Rabbi Mintz, Rabbi Rodich, and I traveled to Berlin with 24 members of our Young Adult Community.

Our trip was organized by Action Reconciliation Service for Peace (ARSP), a non-profit organization founded after World War II by the German Confessing Church. We immersed ourselves in Germany's culture and history as guests of the German government through a grant from its Transatlantic



Program, which draws on funds from the European Recovery Program of the German Federal Ministry for Economic Affairs and Energy and is administered by ARSP.

The eight-day itinerary provided our group with the important yet intense opportunity to learn about the complexity of Germany's history, the development of German politics and society in more recent decades, the country's current efforts to deal with the memory of the Shoah, and the reemergence of Jewish life in Germany today.

Highlights of our trip included a guided tour of the memorial and museum at the former Sachsenhausen concentration camp, a visit to the Memorial to the Murdered Jews of Europe, and tours at the Jewish Museum and the New Museum. We had the privilege of learning along with a panel of Jews living in Berlin today, sharing a dinner with a group of our peers (other young adults living in Berlin), spending time with a former member of the German Bundestag, and meeting with a representative at the Federal Foreign Office. According to one of our participants, these experiences presented Berlin as "a city filled with deep contradictions — a very hip, modern, bohemian city that is weighed down by the baggage of history... I felt extremely lucky to walk around as a Jew and to understand how the past and present were connected."

While our Emanu-El family back home commemorated *Kristallnacht* with an afternoon with Eva Schloss, our group spent the evening of November 9 participating in a commemoration service of the pogrom night of 1938 with members of a local protestant church. This experience

continued on page 9

INTERVIEW WITH SUSAN MOLDAW, LAY CHAPLAIN AT CONGREGATION EMANU-EL

By Byron Gordon, Communications Manager

This March, Congregation Emanu-El will celebrate the work of member Susan Moldaw, our resident lay chaplain. Susan recently sat down with me to talk about her five years as a lay chaplain at Emanu-El.

How does one prepare to become a lay chaplain?

A lay chaplain is a non-clergy chaplain, meaning someone who has trained clinically to become a chaplain, but is not a rabbi or minister. Training is done through a hospital. I trained at California Pacific Medical Center over approximately a two-year period, beginning in the fall of 2010, through the winter of 2013.

What prompted you to become a lay chaplain?

My father died in 2008. I spent a meaningful year with him while he was ill. After he died, I wanted to work with older people. I decided to go back to school and study gerontology. I completed my Masters in Gerontology at San Francisco State University. While there, I was drawn to the subject of spiritual gerontology and studied palliative care, hospice, and end-of-life. I also completed the Bay Area Jewish Healing Center's Kol Hanesham's End-of-Life volunteer training program and interned at the Jewish Home as a spiritual care partner. During graduate school I took a class at the Graduate Theological Union, in Berkeley, titled "Accompaniment as Spiritual Practice," taught by Rabbi Elliot Kukla of the Bay Area Jewish Healing Center. Though I didn't understand exactly what that title meant, I felt it described my year of being with my father when he was ill. I loved the class. When it ended, Rabbi Kukla suggested that I train to become a chaplain.

Describe your first day at the hospital. What was it like?

My first day was overwhelming! I was assigned to a unit of the hospital, where I introduced myself to the nurses, received a daily census of the patients, and went from room to room, introducing myself as a chaplain to patients and talking with those patients who were receptive. Later in the week, I met with a group of five other chaplains in training and our supervisor. We presented cases, learned listening tools and analyses, and challenged one another. I saw patients and met weekly with my cohort over the course of the training.

What did you learn presenting cases?

There are so many ways that you can talk with someone; a conversation can go in many directions. During the case presentations the chaplain presenting recounted conversations

line by line — the patient was never identified, of course — and the chaplain, peers, and supervisor questioned why the chaplain said what they said. What one says always has to do with who one is as a person. Am I creating the right space? Am I asking the right kind of questions? Am I having the right kind of presence? Am I guiding the conversation in a way that is most meaningful for the patient? Listening and presence are paramount in this line of work. Asking open-ended questions is very important, as well as identifying themes and responding in ways that may help the person reach a degree of understanding. It's important for the chaplain to remember that they are not there to fix anything, but rather to listen, care, and help the person find the answers for themselves. Sometimes simply being a calm, non-judgmental presence is enough.

You were at Cal Pacific for two years. Then you came to Emanu-El. How did that happen?

My mother saw Rabbi Ryan Bauer at a temple function and told him about the work I'd been doing at Cal Pacific. Rabbi Bauer wanted those members who were not able to easily get to the synagogue to have access to someone like me as a resource. I began my work at Emanu-El in March of 2013.

Describe working as a chaplain at Emanu-El.

I worked closely with and had a wonderful working relationship with Membership Director Terry Kraus and the Emanu-El clergy. It was truly a privilege to be a part of Congregation Emanu-El.

You've done this type of work for Emanu-El for five years. Has any one particular story stood out?

Each person and each relationship is sacred, and each person touched me in different ways. It's a real privilege and a responsibility when someone lets you into their life.

Did you feel emotionally drained?

There's no denying that empathy is a big part of this job. Empathy is in the middle of a continuum. You can lose yourself in someone's story and it is emotionally draining. But you can also have so much distance from someone's story that you don't feel connected to it. I found a way to stay in the middle. It's a combination of feeling and perspective that creates a balance.

There's a tremendous urge to want to always want to fix things. But it's not in your job description to do that, right?

Some people just want to be heard. It's not my job to give advice, and it's critical to remember that I can't fix things. Sometimes, in helping a person express all of their different feelings about an issue, they are able to determine for themselves what they want to do. I'm not a trained therapist and I am very clear about that.

What prompted you to step down from your lay chaplaincy duties at Emanu-El?

It was a difficult decision. I have many relationships that are important to me. But at this stage, I'm ready for some new experiences and want to challenge myself in new ways. I also have a mother who will be 90; I want to have enough time to spend with her.

Any advice to someone who is interested in becoming a lay chaplain?

It's intense work. Most importantly, you have to know yourself well, and accept that you can't fix things. It can be very uncomfortable to listen to someone who is in a lot of distress. You want to make them feel better. But it's amazing just how much you can accomplish for that person by just being present and not judging. It can be a huge relief for people to feel heard and less alone. This kind of work is not for everyone; it calls out to certain types of people. You have to be comfortable with old age, sickness, grief, and death. You must be comfortable with stresses and difficulties and things that can't be fixed and answered.

You don't have to be a designated chaplain or spiritual care provider to listen and to care and to be there for somebody. In the hospital, many nurses, doctors, and aides were wonderful in their kind, compassionate manner. Someone interested in chaplaincy might try taking time to be with people who are ill or dying, or simply old. The way you treat people as you go through your day is a form of spiritual care. This work can be done in many ways.

Stay tuned for the April Chronicle in which we will introduce Julie Mayer, Susan's successor. Julie will start in March as our new Pastoral Care Provider.

SHALOM ALEICHEM continued from page 7

provided a glimpse into how Germans today continue to wrestle with their country's history, especially the era in which national socialism ruled their country.

For many of the participants, one of the most memorable experiences of the trip was Shabbat. After a busy and emotional week, we welcomed Shabbat alongside the growing community at the Kraenkelufer Synagogue. One member of our group stated that "our Shabbat experience gave me a glimmer of hope for the future of Judaism in Berlin...Over 100 Berlin Jews at the synagogue were extremely warm and hospitable hosts. I felt energized when everybody sang several renditions of *Shalom Aleichem*."

In Jewish tradition, *Shalom Aleichem* greets the two angels that accompany us as we return home from synagogue on Shabbat. As we sing, we ask the angels for their blessing and then bid them farewell until the following week. Our group was lucky enough to embark on this journey together, and to return home with much to think about. We hope that the words of *Shalom Aleichem* will guide two important processes that continue following this trip: our Young Adult Community members' exploration of the complexities of their Jewish identities and practice, and the nuanced reconciliation between Germany and Jewry today.

APPRECIATED STOCK GIFTS

Did you know that you can make charitable donations – including your Emanu-El membership dues and Impact Fund gifts – from your appreciated stock? With the Dow continuing to break new records, now is an excellent time to avoid potential capital gains taxes while generously supporting the congregation. You may also reduce your taxable estate by donating stock.

If you are making a stock gift, please use the following information:

First Republic Securities Co, LLC
Account Name: Congregation Emanu-El
For Further Credit to Account Number: 33L064574
Clearing Firm: Pershing LLC
Pershing LLC DTC# 0443

Note: Please make the Development Office (tbrown@emanuelsf.org) or (415) 750-7554 aware of your stock gift before it is transferred so your donation can be tracked and appropriately directed as you wish.

Corporate Matching

Many Bay Area companies, including Yelp, Clorox, Google, and Salesforce, will match your gift dollar-for-dollar. Please contact your company's matching gifts coordinator to obtain a matching gift form and determine whether your gift to Congregation Emanu-El can be matched.

Thank you to the following companies for matching our member's donations:

- Apple
- Clorox Corporation
- Google
- Black Rock
- Deloitte & Touche LLP
- Salesforce
- Visa

Donate Online and save postage, paper, and time!

Don't let unexpected *simchas*, *mitzvahs*, and Life-Cycle events catch you off guard!

Donating online is a quick and easy way to honor friends and family while supporting the synagogue. Just go to our website (www.emanuelsf.org), select "Click to Donate," and follow the steps to make a credit card gift over a secure server. Be sure to include all dedication information and let us know if we should notify someone. You will receive an electronic confirmation, followed by an acknowledgment letter in the mail. That's all there is to it! If you need assistance, contact Tyler Brown in the Development Department at tbrown@emanuelsf.org or (415) 750-7554.

DAYTIME PROGRAMS AT THE TEMPLE

Meet other congregants at these weekday opportunities at the temple! Questions? Contact Rebecca Reiner at rreiner@emanuelf.org

All Daytime Events below are at Temple Emanu-El

Cooking for Congregants

Thursdays, March 1, 8, and 22, 9:00 – 11:00 am, Kitchen

Do you enjoy working in the kitchen and helping others at the same time? Sign up for *Cooking for Congregants*, led by two Emanu-El members, where you will prepare meals for congregants facing a recent illness, death, or birth.

When someone we know is going through a challenging time, our natural reaction is to help, although we may not know exactly what to do. For those in need, food frequently becomes a low priority, so the support provided by Cooking for Congregants can make a huge difference! As volunteer Sari Swig says, "There is no better gift to yourself than to help others," while a recipient of meals expresses how "It is such a lovely gesture of community... I was most grateful."

Register now to fulfill this mitzvah! All menus, ingredients, and storage containers are provided. And if you know a congregant who would benefit from a few delivered meals, please let us know.

The Stories of Your Life: Guided Autobiography and Life Review Writing

No charge; any skill level welcomed.

March 5, 10:00 am – Noon

Join this monthly group to share your unique life in writing while getting to know yourself and others better. The writing is done at home, and then shared in class in a safe and structured way.

Scrabble

No charge; drop in; all ages and experience levels welcomed.

Mondays, March 5, 12, 19 and 26, 11:00 am – 3:00 pm

Do you enjoy the challenge of putting letters together to form words? Join the Scrabble group and play a rousing game or two! Expand your vocabulary along with your social circle. Bring a Scrabble set (optional) and, of course, your appreciation of words.

Mah Jongg

No charge; drop in; all levels welcomed.

Rinder Chapel

Tuesday afternoons, March 6 and 20, 1:30 – 4:30 pm

Tuesday evenings, March 13 and 27, 6:00 – 9:00 pm

Join us for Mah Jongg! There will be no teaching at these Tuesday sessions; play time only.

Bridge Club – Lessons and Game

Drop in; Cost: \$15 for members, \$20 for friends of members.

Tuesdays, March 6, 20 and 27, 10:00 am – Noon,

If you are beyond the level of beginner, join this very popular and lively group for duplicate-style bridge. Play while improving your game. No partner needed. Deborah Murphy is the instructor. (note: Not meeting on March 13)

COMMUNITY

CONGREGANT GROUPS & GATHERINGS

Meet other congregants at these weekend and evening opportunities! Please register online. Questions? Contact Rachel Schonwetter at rschonwetter@emanuelf.org

THE TRIBE FOR WOMEN / THE WOMEN'S GROUP

*The Tribe for Women is for moms with children ages 0–18.
The Women's Group is for all adult women of Emanu-El.*

Women's Seder

Thursday, March 22, 6:30 pm | Temple Emanu-El

A good bottle of wine can make a Passover seder! We invite all women in the Emanu-El community to join us for this year's women's seder, which will feature wine tasting of offerings from Northern California wineries. (See the Passover section of this issue of the Chronicle for more details.) Check our website (www.emanuelf.org) for registration details!

INTERFAITH GROUP

Gatherings for interfaith members and families of Emanu-El.

Interfaith Family Meet-up: Dinner!

Wednesday, March 14, 6:30 – 8:30 pm | private congregant's home

We are excited to partner with Interfaith Family for a meet-up dinner at a private congregant's home. Share stories, get support, and learn best practices as you navigate the two backgrounds in your relationship. The discussion will be led by Interfaith Family's Rabbi Samantha Orshan Kahn and our Cantor Arik Luck.

To register and RSVP, email LisaF@InterfaithFamilton.com.

EMANU-EL IN THE NEIGHBORHOOD

Build Emanu-El in your community with neighborhood gatherings.

Do you love your local coffee shop or farmers market? And does bringing a little Emanu-El into your neighborhood appeal to you? If you're looking for a volunteer opportunity close to home, consider becoming a neighborhood liaison to reach out to congregants in need, coordinate neighborhood events, and welcome new congregants in the city. Or volunteer to host a local community get-together in your home. Interested? Let us know!

ENGAGEMENT

CONGREGANT GROUPS & GATHERINGS

FRONT PORCH

This innovative program assembles congregants into groups and gives them the tools they need to build deep and meaningful relationships at home-hosted gatherings. The gatherings include short videos filmed by one of our rabbis and discussion questions on Jewish topics relevant to life today. Would you like to join a Front Porch group this fall? Fill out the interest form at <https://www.emanuelsf.org/front-porch/>

MISHPACHA

Programs for families with children ages 0–5.

Purim and Passover Celebrations

Please join us on **Saturday, March 3**, at Shushan's Bazaar for our annual Purim carnival. Then join us again on **Saturday, March 31**, for a Passover Seder at the temple! (See page 16 in this issue of the Chronicle for more details on our Seders.)

Side By Side

Emanu-El's Side by Side program introduces our youngest children (18 months to 2.5 years) to a preschool environment with their parent or caregiver by their side. Side by Side is rich in Jewish content, celebrating Jewish traditions and holidays. This program will be a wonderful introduction to preschool that will deepen relationships in our community and launch a meaningful beginning to the school experience for both parents and children.

Two sessions per week for 8 weeks (16 total sessions):

Tuesdays and Thursdays starting March 6, Temple Emanu-El

Members: \$275, Non-members: \$360, Register online!

Two Baby Groups Available!

Drop in with your little one (birth to 24 months) and spend time with other parents. Join us as we prepare to welcome Shabbat on Fridays and celebrate Havdalah on Mondays. Enjoy music, stories, puppets, and more with early childhood educator Mimi Greisman. Take advantage of a wonderful opportunity to connect with other parents and create lasting friendships!

Bagels and Babies

Fridays throughout the year, 9:30 – 11:00 am | Martin Meyer Sanctuary

Mazel Tots!

Mondays throughout the year, 9:30 – 11:00 am | Martin Meyer Sanctuary

Members: No charge, Non-members: \$10/session (first session free)

TZEDEK COUNCIL

Meet your fellow congregants for these social justice opportunities! Questions? Contact Monica Pevzner.

What is the Tzedek Council?

The Congregation Emanu-El Tzedek Council was launched in August 2015 as a congregant-, board-, and clergy-run group, charged with the task of raising our participation and impact in the social justice arena. The Tzedek Council comprises four working groups, covering the following topics: Economic Justice, Education, Environment, and Human Rights.

HUMAN RIGHTS

UNITY GROUP

Congregation Emanu-El and First African Methodist Episcopal Zion Church sponsor an African-American/Jewish Unity Group that meets monthly.

Second Thursdays of the month, 6:00 – 7:30 pm

**African American Art & Culture Complex,
762 Fulton Street, San Francisco**

For the past two years, a group of Emanu-El congregants have met monthly with members of the Bay Area African-American community – for fellowship and to advance the cause of racial justice in the Bay Area and beyond. This year, the Unity Group will partner with other organizations to push for bail reform legislation in California. We believe that this



continued on page 15

As a large congregation, we recognize the importance of small group connection, so we create many opportunities for learning, socializing, and enjoying local culture together. These group gatherings generally occur in the evening hours or on weekends. Refer to the Community or Social Justice pages on our website for more information and staff contact information. Remember to register online in the MyEmanu-El portal for all of these programs (unless otherwise noted below) so we know to expect you.

Your Community Engagement Team:

Terry Kraus (tkraus@emanuelsf.org, x111)

Monica Pevzner (mpevzner@emanuelsf.org, x124)

Rebecca Reiner (rreiner@emanuelsf.org, x170)

Rachel Schonwetter (rschonwetter@emanuelsf.org, x171)

DONORS

Thank you to all of our donors for their generous support of the Temple.

GENERAL FUND - used where the need is the greatest at the Temple

Mr. and Mrs. David Arrick	in observance of Myron and Edith Arrick's Yahrzeits
Dr. Barbara Baer and Mr. Dean Muller	in memory of Marion Moose Levy
Mr. and Mrs. Jonathan Beck Gary Beckerman Gary Beckerman	in honor of Michael and Lorie McKenzie in honor of Samuel Beckerman's Assistant DA appointment in memory of Marian Levy
Mrs. Inge Berliner Mr. Ilya Berman and Ms. Larisa Lisitsa	in observance of Aron Berman's Yahrzeit in memory of Elinore Green
Mr. and Mrs. Charles Bleadon Mr. Michael Burwen and Mrs. Sherry Scherotter-Burwen	in observance of Ruth Schaefer's Yahrzeit in observance of Alison Well's Yahrzeit
Mr. and Mrs. Daniel Coles Mrs. Adele Corvin Ms. Dana Corvin and Mr. Harris Weinberg Mr. Barry Cusick	in memory of Marian Levy in observance of Patricia "PB" Cusick's Yahrzeit in memory of Marian "Moose" Levy in memory of Mel Dvorson in memory of Marian Levy
Rita and Robert Delue Mrs. Betty Dvorson Marilee and Arthur Fenn Ms. Deborah Fineman Ms. Andrea Freedman and Mr. Boris Khersonski Mr. Clifford and Ms. Barbara Gerber Ms. Jamie and Mr. Josh Goldstein Mr. and Mrs. Norman Gordon	in memory of Larry Sanford in observance of Robert Gerber's Yahrzeit in memory of Alan Saul Goldstein in observance of Milton Newman's Yahrzeit in observance of Clara Newman's Yahrzeit in observance of Michael Gordon's Yahrzeit in observance of Maxwell Livshin and Jean Livshin's Yahrzeits in memory of Marian Levy in observance of Harold Groner's Yahrzeit in observance of Herbert M. Grossman's Yahrzeit in observance of Rebecca Haas' Yahrzeit in observance of Myron Harband's Yahrzeit
Mr. and Mrs. Norman Gordon Mrs. Sonya Gordon	
Mrs. Sonya Gordon	
Mrs. Patsy Greenstein Mr. Brian and Evyn Groner Mrs. Susen Grossman	
Mrs. Mary Haas Mr. Howard Harband	
Ms. Marilyn Higuera Mr. and Mrs. Jordan Hymowitz	in appreciation of Cantor Attie and the Temple's security team
Ms. Jodi Innerfield Mrs. Harriet Israel Ms. Laura Jones and Mr. Brian Matthay The Jones-Smith Foundation Mr. and Mrs. Robert La Vine Mrs. Gail Laghi	in memory of Mina Ring in honor of Max Matthay's baby naming in honor of Mavis Nathan in memory of Elinore Green in memory of Marian Levy, and Clifford and Harriet Barbanelle in observance of Lea Lakovetsky's Yahrzeit in observance of Markus Lakovetsky's Yahrzeit in memory of Steven Jon Leiber's Yahrzeit in memory of Harry Holtz in observance of Rebeka Karz' Yahrzeit
Mrs. Anna Lakovetsky	
Mrs. Anna Lakovetsky	
Mr. and Mrs. Paul Leiber Mr. and Mrs. Paul Leiber Mr. and Mrs. Paul Leiber Mr. Bruce Leitstein Mr. Jesse M. Levy Mr. Jesse M. Levy Mr. Richard Levy	in memory of Marian Levy in memory of Larry Sanford in observance of Bette Goldberg Levy and Fannie L. Goldberg's Yahrzeits in memory of Marian "Moose" Levy in observance of Edith Liebschutz and Susan Skurow's Yahrzeits
Franklin and Virginia Lew Ms. Linda Liebschutz and Mr. Joseph Taylor	

Mr. Martin Lipton and Ms. Robbin Mashbein Mrs. Joannie Liss	in observance of Alan Lipton's Yahrzeit in honor of Rabbi Bauer, Rabbi Pearce, and Cantor Barak
Elaine Lowenthal	in memory of Maxine Segal, Marian Levy, and Margy Boyd in memory of Laurence Sanford in observance of Robert Mann's Yahrzeit in observance of Emanuel Manning's Yahrzeit in celebration of Dylan Keleman's Bar Mitzvah
Anne Magil Mrs. Marlene Mann Mr. and Mrs. Jerome Manning	
Alice Talley Marquez	
Frederick and Beverly Maytag Mr. and Mrs. Jeffrey Moore Ms. Barbara Morgenthau Marilyn Patel Karen and Henry Przyborowski San Francisco Association of Russian Veterans of WWII Mr. David Sayed Mr. Bart and Ms. Charlene Schachter Mrs. Gilda Schine Mr. and Mrs. Barry Schneider Ms. Ilana Shapiro and Mr. Liron Yahdav Dr. and Mrs. James Shapiro Dr. German and Ms. Cynthia Shegalov Mr. Stanley and Elizabeth Star	in memory of Nina Jaffa Gruen in memory of Marian Levy in appreciation of Temple Emanu-El in memory of Marian Levy in observance of Frank Herzon's Yahrzeit in celebration of Ilana Shapiro's marriage in memory of Bernard Schimmel in celebration of Jacob Alan Star's Brit Milah in memory of Laurence Sanford in observance of Sylvan Lisberger's Yahrzeit in observance of Lilian Fenig's Yahrzeit in celebration of Max Semel's Birthday in observance of Zoya Vestel's Yahrzeit in memory of Carol Lieberman in memory of Sy Phillips in observance of Scott Zarrow's Yahrzeit in memory of Eli W. Zucker
Mrs. Sylvia Storey Mrs. Sylvia Storey	
Mr. and Mrs. Stuart Tanenberg Mr. James Thomson and Prof. Elisabeth Semel Mr. and Mrs. Nick Vestel The Weissman Foundation Dr. and Mrs. Lawrence Werboff Dr. and Mrs. Lawrence Werboff Hilary, Alison, and Rachel Zarrow Ms. Rebecca Zucker and Mr. Doug Kanigher	

GENERAL FUND FOR TEMPLE FLOWERS

Ms. Lisa and Mr. Alex Mann	in honor of Victoria and David Mann's B'nei Mitzvah
Mr. and Mrs. Neville Rich	in memory of Marian Levy

CANTORS' MUSIC FUND - supports the Congregation's Music program and is used for charitable giving at the Cantors' discretion

Mrs. Rochelle Anixter	in observance of Rabbi David Greenberg's Yahrzeit
Dr. and Mrs. Leonard Brant Dr. and Mrs. Leonard Brant Mrs. Adele Corvin (2) Mrs. Maria Diamond Mr. Alex Kishinevsky and Mrs. Diana Urman Ms. Elizabeth Lougee and Mr. Jonathan Feldman Ms. Lisa and Mr. Alex Mann	in observance of Harry Padams' Yahrzeit in observance of Oscar Padams' Yahrzeit in memory of Marian Levy in memor of Abraham Levinas in honor of Eli Kishinevsky's Bar Mitzvah in honor of Sasha Feldman's Bat Mitzvah in honor of Victoria and David Mann's B'nei Mitzvah
Mrs. Rebecca and Mr. Stephen Ravel Mrs. Charlene Tuchman Ms. Eva Sheppard and Mr. Sven Wolf	in memory of Daniel Ravel's Bar Mitzvah in memor of Sidney Tuchman in honor of Matthew Wolf's Bar Mitzvah

The following gifts were received from December 1 - January 31, 2018:

DONORS

EMANU-EL COMMUNITY SERVICE FUND - promotes and supports social action and community service related programs

Mrs. Nancy and Mr. James Baer	in memory of Marian Levy and Elinore Green
Mr. and Mrs. Charles Bleadon (2)	
Stefan Campbell	in celebration of Dylan Kelemen's Bar Mitzvah
Michael Cone	in celebration of Dylan Kelemen's Bar Mitzvah
Mrs. Adele Corvin	in observance of Bill Corvin and Charlotte Kleinhaupt's Jahrzeits
Mrs. Maria Diamond	in memory of Harvey Wolf Diamond, Rebeca Thau Diamond and Gerald Diamond
Jason Dunham	in celebration of Dylan Kelemen's Bar Mitzvah
Mrs. Helene Ettelson	
Naomi Fiss	in celebration of Dylan Kelemen's Bar Mitzvah
Mr. and Mrs. Robert Futernick	in observance of Joseph Futernick's Jahrzeit
Louise Geil	in celebration of Dylan Kelemen's Bar Mitzvah
James Green	in celebration of Dylan Kelemen's Bar Mitzvah
Christopher Herrera	in celebration of Dylan Kelemen's Bar Mitzvah
Michelle Hyde	in celebration of Dylan Kelemen's Bar Mitzvah
Ms. Jodi Innerfield	
Mr. and Mrs. Scott Kay	in observance of Robert Plevin's Jahrzeit
Kimberly Kelemen	in celebration of Dylan Kelemen's Bar Mitzvah
Dr. Matthew Kelemen and Dr. Jeannette LaFors	in celebration of Dylan Kelemen's Bar Mitzvah
Stephanie Koontz	in celebration of Dylan Kelemen's Bar Mitzvah
Natalie Krelle-Zeponi	in celebration of Dylan Kelemen's Bar Mitzvah
Lisa Krim	in celebration of Dylan Kelemen's Bar Mitzvah
Mrs. Tristi and Mr. Damon Marshall	in celebration of Dylan Kelemen's Bar Mitzvah
Dr. Debbie McKinney	in honor of the Temple's Winter Interfaith Shelter Dinners
Margaret Muschett	in celebration of Dylan Kelemen's Bar Mitzvah
Laura Post	in celebration of Dylan Kelemen's Bar Mitzvah
Ms. Miriam and Mr. Eric Reiter	in observance of Rebecca Selinger's Jahrzeit
Anne Romero	in celebration of Dylan Kelemen's Bar Mitzvah
Mr. John and Ms. Dena Selix	
George Sims	in celebration of Dylan Kelemen's Bar Mitzvah
Stephen Sims	in celebration of Dylan Kelemen's Bar Mitzvah
Mr. and Mrs. Harold Stein	in memory of Marian Levy
Ernest Wolf	in celebration of Dylan Kelemen's Bar Mitzvah
Felicia Yu	in celebration of Dylan Kelemen's Bar Mitzvah

FOR THE ROOSEVELT FOOD PANTRY

Mr. and Mrs. Harry Nebenzahl	in memory of Elinore Green
Mr. and Mrs. William Scott	in observance of Gustav "Gus" Ernst's Jahrzeit
Ms. Susan Snyder	in memory of Alan B. Snyder

EMANU-EL LIFE-CYCLE FUND - enables all congregants to celebrate significant milestones, regardless of economic circumstances

Mr. and Mrs. Scott Kay	in memory of Eleanor Plevin
Ms. Mavis Nathan	in observance of Marion Gilman's Jahrzeit
Ms. Mavis Nathan	in observance of Rose Levy's Jahrzeit
Mrs. Rebecca and Mr. Stephen Ravel	in honor of Daniel Ravel's Bar Mitzvah
Ms. Eva Sheppard and Mr. Sven Wolf	in honor of Matthew Wolf's Bar Mitzvah
Mr. Eric and Ms. Gayle Starr	in observance of Sy and Eleanor Phillips' Jahrzeits

EMANU-EL PRESCHOOL FUND OUTREACH - provides scholarships for children attending the Emanu-El Preschool and for staff development

Dr. and Mrs. Adam Behrens	in observance of Roberta Kinstler Jaeger MD's Jahrzeit
Mr. and Mrs. Robert Freinkel	in observance of Henry and Charlotte Appel, and Leonard and Mickey Freinkel's Jahrzeits

LUDWIG AND REBECCA ROSENSTEIN ADULT EDUCATION FUND - supports a variety of Congregation's Adult Education programs

Mrs. Carol and Mr. David Berluti in honor of Ariana Estoque

ONEG SHABBT AND KIDDUSH FUND - provides for the weekly Shabbat Oneg, Kiddush, and other Congregational receptions

Mrs. Maria Diamond	in memory of Fanny Felch, Ora Waisman Diamond, and Rosalia Flichman
Mr. Joseph Ehrman III and Mrs. Diane Ehrman	in observance of Marion R. Roth's Jahrzeit
Mr. Robert and Ms. Amalia Freedman	in honor of Miriam Freedman's Bat Mitzvah
Mrs. Zeeva Kardos	in observance of Zvi Harry Zaretsky's Jahrzeit
Ms. Lisa and Mr. Alex Mann	in honor of Victoria and David Mann's B'nei Mitzvah
Mrs. Rebecca and Mr. Stephen Ravel	in honor of Daniel Ravel's Bar Mitzvah
Mr. and Mrs. Stuart Tanenberg	in honor of Elior Tanenberg's baby naming
Dr. Janet Wojcicki and Mr. Gregor Schauer	in honor of Adam Schauer's Bar Mitzvah

RABBIS' FUND - used by the clergy and senior staff for charitable giving

Dr. Anita Josefa Barzman	in observance of Israel Sol Barzman's Jahrzeit
Mr. Martin and Dr. Deborah Bloch	in observance of Julius Bloch's Jahrzeit
Mrs. Lillian Cape	in appreciation of Rabbi Beth Singer
Mrs. Eleanor Coffman and Family	in memory of Marian Levy
Dr. and Mrs. Charles Cooper	in memory of Phyllis Schochet Zell
Dr. and Mrs. Charles Cooper	in observance of Sylvia Weissman's Jahrzeit
Dr. and Mrs. Stuart Eisendrath	in support of the Congregation's California Wildfire relief
Mr. Robert and Ms. Amalia Freedman	in honor of Miriam Friedman's Bat Mitzvah
Carole Fried	in appreciation of Rabbi Jonathan Singer
Mrs. Nancy and Jonathan Fudem	in observance of Frank Fudem, and Harold and Deana Freed's Jahrzeits
Mr. Jeffrey Greendorfer	in memory of Marian "Moose" Levy
Ralph and Marsha Guggenheim	in celebration of Carol Nathan's birthday
Ms. Frances Hurwitz	in observance of Louis Sures' Jahrzeit
Mr. Alex Kishinevsky and Mrs. Diana Urman	in honor of Eli Kishinevsky's Bar Mitzvah

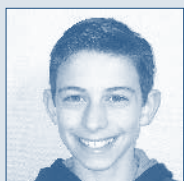
LIFECYCLES

MARCH 2018 B'NEI MITZVAH

Henrik Shragge

Bar Mitzvah: March 17 | Main Sanctuary

Parents: Jorun & Harmon Shragge
Torah Portion: Vayikra Hahodesh



Bennett Steifman

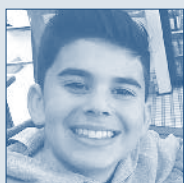
Bar Mitzvah: March 17 | Martin Meyer Sanctuary

Parents: Kira & Marc Steifman
Torah Portion: Vayikra Hahodesh

Luke BloomKing

Bar Mitzvah: March 24 | Main Sanctuary

Parents: Abigail & Brian BloomKing
Torah Portion: Tzav Haggadol



Spencer Mosson

Bar Mitzvah: March 24 | Martin Meyer Sanctuary

Parents: Laura & Andrew Mosson
Torah Portion: Tzav Haggadol

CELEBRATING A SHEHECHEYANU MOMENT?

Congregation Emanu-El is an ever-present partner in the transitional moments of our members' lives. Be it a baby naming or *brit milah*, a bar or bat mitzvah, a conversion or wedding ceremony, or a recovery from illness, Emanu-El clergy and staff strive to ensure that each sacred "Shehecheyanu Moment" is deeply fulfilling and personal. A donation to the Emanu-El Life-Cycle Fund is a beautiful way to mark a personal milestone, to honor friends or family celebrating a happy experience, or to show gratitude for the services provided by our clergy during these profound moments. Please donate online at www.emanuelsf.org or call the Development office at (415) 750-7554.

NEW MEMBERS - Welcome!

Ms. Greta Kravetskiy, Mr. Igor Brener • Ms. Robin Carlson • Mr. Justin Fishner-Wolfson, Ms. Lauren Chew • Margaret Golubchik, Brigitte Golubchik, Mr. Steven Golubchik • Ms. Leila Narvid, Dr. Jared Narvid, Gabriel Narvid • Livia Payne, Vivienne Payne, Mr. Matt Payne

REJOINED MEMBERS - Welcome Back!

Ms. Amy Gershoni, G Gershoni • Mr. Michael Knee

MAZEL TOV TO OUR MEMBERS WHO HAVE EXPERIENCED JOY

Laura Oppenheimer and Daniel Atkins on the birth of their son, Owen Atkins

Susy and Stephen Star on the birth of their son, Jacob Star
Vicki and Scott Kahn on the birth of their grandson, Leon Enzo Berkin

Laura Jones and Brian Matthay on the birth of son, Max Matthay
Ilana Stern and Jeff Enquist on the birth of their daughter, Sophia Anne Stern Enquist

Alexandra and Jonathan Golden on the birth of their son and daughter, Maxwell Farrell Golden and Madeleine Sahlin Golden

Kimberly Litchfield and Josue Chan-Pat on the birth of their daughter, Paloma Isabelle Litchfield-Chan

CONDOLENCES TO OUR MEMBERS WHO HAVE SUFFERED RECENT LOSSES

Kimberly Litchfield (Josue Chan Pat) on the death of her mother, Susan Litchfield

Sheldon Levin on the death of his wife, Dolores Levin

Kenly Shankman (Michael) on the death of her father, and Nash and Noa Shankman on the death of their grandfather, Alec Lambie

Karen Barton Maycock (Randall) on the death of her father, and Isaac Maycock on the death of his grandfather, Harold Daniel Barton

Marshall Small on the death of his wife, Mary Small

Daniel Grossman (Linda Gerard) on the death of his father, and Noah and Jonah Gerard-Grossman on the death of their grandfather, Moses (Misha) Grossman

Sarah Papoff (Alexander) on the death of her grandmother, and Sydney Papoff on the death of her great-grandmother, Mildred Rothschild

Charles Charnas (Margaret) on the death of his father, and Juliet and Nathaniel Charnas on the death of their grandfather, Stephen Charnas

Jaclyn Safier (Daniel) on the death of her father, and Joshua and Lauren Safier on the death of their grandfather, Sanford Diller

Pam Baer (Larry) on the death of her nephew, Noah Scialom
Jennifer Gosselin (Reed Maltzman) on the death of her father, and Zoe and Maxwell Maltzman on the death of their grandfather, John Gosselin

Amy Abbott (Harish) on the death of her mother and Zoe Abbott on the death of her grandmother, Jane Hufft

Laynie Tzena on the death of her brother, Jeffrey Theodore Deutsch

The family and friends of Carol Ann Edelman

CONGRATULATIONS TO OUR MEMBERS ON THEIR ACHIEVEMENTS

Tricia Hellman Gibbs on being given the Jewish Community Relations Council Jewish-Civic Leadership Award for her philanthropic support of innovative collaborations addressing the toughest community challenges in education, health access, land use, and the arts

Susan Kitchell and Walker Black in observance of Dora Kitchell's Yahrzeit
Mr. and Mrs. Robert Kroll in observance of Mildred Wexer and David Sherman Wexer's Yahrzeits

Carol Leemon and Eugene Herts in honor of Rabbi Sydney Mintz
Mr. Sherman Levine in observance of Maria Levine's Yahrzeit

Ms. Elizabeth Lougee and Mr. Jonathan Feldman in appreciation of Rabbi Fenves
Ms. Lisa and Mr. Alex Mann in honor of Victoria and David Mann's B'nei Mitzvah

Mr. Randall Maycock and Ms. Karen Barton-Maycock in observance of Yerkhim and Maya Israilevich, Leah Kholadovskaya, and Mickail Melnikova-Eichenvald's Yahrzeits
Ms. Sonia Melnikova-Raich and Mr. David Raich in apperication of Rabbi Jonathan Singer's Torah Class

Mr. Jonathan Nordlicht in honor of Daniel Ravel's Bar Mitzvah
Mr. Nate Pollack and Stephanie Goodman in observance of George Reiner's Yahrzeit
Mrs. Rebecca and Mr. Stephen Ravel in observance of Ida Sax Rudner's Yahrzeit
Ms. Ditka Reiner in memory of Marian Levy
Mr. Richard Sax in observance of William Max Weiner's Yahrzeit

Mrs. Frada Shapiro in memory of Elinore Green
Mr. Albert Villa (2) in honor of Matthew Wolf's Bar Mitzvah
Mr. Herbert Weiner in honor of Ella Zagorie's baby naming

Phil and Bev Winslow in observance of Isaac Zisman's Yahrzeit
Ms. Eva Sheppard and Mr. Sven Wolf
Mrs. Alyssa and Mr. Aviram Zagorie
Mr. and Mrs. Naftali Zisman

YOUTH EDUCATION FUND - provides scholarships and other support for our Youth and Family Education program

Martha Boero in observance of Ruth Schaefer's Yahrzeit
Mr. Michael Burwen and Mrs. Sherry Scherotter-Burwen in observance of Soufer Frouzan's Yahrzeit
Ms. Mahdokht Frouzan in observance of Dr. Arthur Gilman's Yahrzeit
Ms. Mavis Nathan in observance of Betty Herzon's Yahrzeit
Mr. and Mrs. Barry Schneider in observance of Harry and Clara Stein's Yahrzeits
Eugene and Diane Stein

OTHER GIFTS

Jewish Community Federation to support Emanu-El's Student Debt Relief pilot program
Koret Foundation to support the Congregation's Wise Aging Program
Rosanne and Al Levitt to help provide for a new Torah cover for the Synagogue's new Holocaust era Torah
Mr. and Mrs. Robert Newman to support of the Israel Action Committee
Ms. Sally and Mr. Jim Shapiro to support the Taube Emanu-El Scholar to support Israel Action Committee programming, and in observance of Ida Zisman's Yahrzeit
Taube Foundation for Jewish life and Culture to support Israel Action Committee programming
Mr. and Mrs. Naftali Zisman

YOUTH AND FAMILY EDUCATION

Service-learning is a form of experiential education in which students engage in meaningful service opportunities that combine hands-on experience, Jewish learning, and reflection. Our students participate in Jewish service-learning all year long as part of their family days outside the building (e.g., Meals on Wheels, Food Bank, bringing scarves to homeless people, singing to residents of the Jewish Home); through temple wide collections (including canned foods, toiletries, warm coats, and books); through in-class collections of tzedakah; and by cooking and delivering food to congregants in need. Ask the children what service learning projects they have participated in so far this year!



COMMUNITY ENGAGEMENT continued from page 13

legislation, if passed, will make an enormous difference in the lives of many poor people and people of color. We would love to have you join us in this effort. You are welcome to come to meetings simply to learn more about the topic, after which you can decide how involved you'd like to be.

Please contact Saundrah Anjali (sanjali@emanuelsf.org) for more information or to be added to our Unity Group mailing list.

Stay tuned to future editions of the Chronicle for information on gatherings with our:

- Men's Group (a group for men of Congregation Emanu-El focused on Torah study and socializing)
- The Tribe for Men (a group of active and committed Emanu-El dads ages 30–50 with children ages 0–12, regardless of gender and/or sexual identity)



SUMMER 2018 UNDER THE DOME

SUMMER CAMP WEEKS:

- WEEK 1: (6/25 - 6/29) MESSY ART
- WEEK 2: (7/2 - 7/6) SCIENCE CLOSED ON JULY 4TH
- WEEK 3: (7/9 - 7/13) COOKING
- WEEK 4: (7/16 - 7/20) NATURE INVESTIGATIONS
- WEEK 5: (7/23 - 7/27) STORY WORKSHOP
- WEEK 6: (7/30 - 8/3) MAKER LAB

MONDAY - FRIDAY
9 AM - 1 PM

EXTENDED DAY OPTIONS AVAILABLE!

JUNE 25th -
AUGUST 3rd

FEES:

1 week: \$350
2 or more weeks:
\$300/week
All six weeks:
\$1,700

FOR ADDITIONAL INFORMATION OR TO REGISTER, CONTACT NIKAI GREENBERG AT
NGREENBERG@EMANUELSF.ORG

Increase the anticipation in the days and weeks before Passover, engage children of all ages, and find ideas to liven up your Seder with these Passover activities and crafts!

GUESTS

Passover is **the** festival to reach out and invite anyone you know who needs a seder invitation. It is the holiday when hosts borrow folding chairs to squeeze as many people as possible around their tables. There is a well-known verse in the Passover Haggadah, *Kol dichfin yeitei v'yeichul*, let all who are hungry come in and eat.

CDS OR IPOD PLAYLIST

Liven up your seder with music!

FRESH FLOWERS

Brighten your seder table with colorful spring flowers. If guests ask what they can bring, flowers are an appropriate item to suggest.



RITUAL ITEMS

Feather, wooden spoon, and paper bag

One of the many fun customs associated with Passover is to search for, collect, and destroy any *chametz* (leavening or grain that ferments) in the house. Children are particularly enthusiastic about this "search and destroy" mission. Look any place in the house where *chametz* was used during the year. Or designate one family member to hide 10 pieces of *chametz* (a Kabbalistic tradition) throughout the house (just remember where you put them). Before the search this blessing is recited. Use the feather to sweep all the crumbs into the spoon and deposit them in the paper bag. The next morning, make one final search and then burn or discard the bag and its contents.

PILLOWS

Put a pillow on each guest's chair at the seder table to encourage everyone to comfortably recline during the seder. This custom is observed in the spirit of celebrating our freedom. Pillows also soften the impact of sitting for several hours on metal folding chairs.

HAGGADOT

Each guest will need a Passover Haggadah to use during the seder. Most Reform Jewish Haggadot (plural of Haggadah) include egalitarian language and beautiful illustrations.

Source: ReformJudaism.org

HOW TO SEW A MIGHTY MATZAH COVER

Supplies: satin fabric, fabric glue, puffy paint, big gems, embroidered patches

Begin by cutting out two square pieces of any fancy fabric of your choice. Make sure they are the same size. Glue together the backs with fabric glue. Once the glue has dried, gather up all your trims that you have and place them on the front cover in any special sequence you like. Lift each trim and put a dot of glue on the back and glue down to your fabric. With some puffy paint, draw any type of design or pattern around the trims anywhere on the cover. Lastly, write the word "Matzah" in Hebrew or English on the cover. Enjoy your cover during your special seder.

Reprinted with permission from cookingwithmykids.com



EMANU-EL PASSOVER SEDERS



WOMEN'S SEDER

Thursday, March 22, 6:30 pm

All of the women in our community are invited to the annual women's seder. This year's event will be an inspiring, celebratory evening of dining, learning, and conversing. In addition, the traditional four cups will be presented as wine tastings, featuring wines from local Northern California wineries! Check our website for registration details.



SAN FRANCISCO MULTICULTURAL PASSOVER FREEDOM SEDER

Monday, March 26, 6:30 pm

*Jewish Community Center of San Francisco,
3200 California Street*

The San Francisco Multicultural Passover Freedom Seder celebrates our community as a bastion of freedom. Come and be part of this participatory, cross-cultural, interfaith exchange to honor one of the most important Jewish holidays of the year! Our own Rabbi Carla Fenves will lead this special seder.

Tickets are available at the Jewish Community Relations Council Programs and Events page. **Purchase your tickets before February 26, 2018 and receive an early-bird discount. SPACE IS LIMITED, so don't delay!**

Presented by the Jewish Community Relations Council, the Jewish Community Center of San Francisco, and Congregation Emanu-El.

To register for any of our Passover seders, please visit www.emanuelf.org/passover



FAMILY PASSOVER SEDER

Saturday, March 31, 4:30 pm | Guild Hall

This family seder is designed to engage families with children. It will be led Rabbi Beth, Rabbi Fenves, Rabbi Bauer, and Cantor Luck. The seder will be musical, participatory, and fast-paced, and will include a delicious dinner. Please arrive at 4:30 pm for registration. The service will start around 4:45 pm, followed by dinner at 5:45 pm. We will then reconverge at 6:15 pm for the conclusion of the service at 6:45 pm.

Seating/Dietary Considerations: Please email Lea Moise Kleinman at Imoisekleinman@emanuelf.org with the names of those with whom you would like to be seated, as well as with any dietary restrictions.

Please note that no childcare will be available for this event.



ADULT PASSOVER SEDER

Saturday, March 31, 6:00 pm | Martin Meyer Reception

For those who want to participate in discussion and singing and be fully engaged in the seder experience, this event is for you! The seder will be led by Rabbi Jonathan Singer. We will follow the order of the Haggadah and end with the Birkat Hamazon and various songs.

Dietary Considerations: If you have any dietary restrictions, please email Lea Moise Kleinman at Imoisekleinman@emanuelf.org.



YOUNG ADULT PASSOVER SEDER

Saturday, March 31, 6:30 pm | Main Sanctuary Foyer

Join other 20- and 30-something Jews for the annual Young Adult Passover Seder! Nosh on gefilte fish and horseradish! Sing Dayeinu! Find an afikoman and make a new friend! Led by Rabbi Rodich, Rabbi Mintz, and Cantor Attie, this seder will be fun and musical. All young adults are welcome and we'd love to have you!

Please note that registration is required and will close at noon on Friday, March 23. Priority will be given to members and space is limited, so don't delay!

Dietary Considerations: Food will be Kosher-style. If you have any dietary restrictions, please email Lea Moise Kleinman at Imoisekleinman@emanuelf.org.

BLESSING FOR SEARCHING AND REMOVING LEAVEN (CHAMETZ)

Seven days you shall eat unleavened bread; on the very first day, you shall remove leaven from your houses . . . (Exodus 12:15)

One of the many fun customs associated with Passover is to search for, collect, and destroy any chametz (leavening or grain that ferments) in the house. Children are particularly enthusiastic about this “search and destroy” mission. Look any place in the house where chametz was used during the year. Or designate one family member to hide 10 pieces of chametz (a Kabbalistic tradition) throughout the house (just remember where you put them). Before the search this blessing is recited. Use the feather to sweep all the crumbs into the spoon and deposit them in the paper bag. The next morning, make one final search and then burn or discard the bag and its contents.

ברוך אתה יי אלהינו מלך העולם אשר קדשנו במצותיו
וצונו על בעור חמץ.

Baruch atah Adonai, Eloheinu Melech haolam, asher kid'shanu b'mitzvotav v'tzivanu al biur chametz.

Blessed are You, our God, Ruler of the world, who sanctifies us with mitzvot and calls upon us to remove chametz.

Source: Reformjudaism.org

HOW TO MAKE A MATZAH HOUSE!

Encourage your children to play with their food by creating this Matzah house that is fun to make and actually tastes good too! It's the Pesach version of the classic gingerbread house.

Source: *Martha Stewart*



MATERIALS

6-by-6-by-6-inch cube cardboard box

Scissors or utility knife

Tape

Matzo

Melted chocolate

Kosher foods (for decoration)

STEPS

1. Begin by folding the cardboard box into the form of a house: Trim 2 of the top flaps into triangles and tape the 2 uncut flaps onto it along the cut angles to create a support for the pitched roof.
2. Squeeze melted chocolate onto form.
Tip: Keep melted chocolate liquefied by resting a container of it in warm water.
3. Attach pieces of matzo to chocolate-covered house form.
4. Decorate the matzo house with kosher food items of your choice, using the melted chocolate to attach the decorations to the house.



Congregation Emanu-El
Two Lake Street
San Francisco, CA 94118
www.emanuelsf.org

PERIODICAL

We are a vibrant, sacred Jewish community that is dedicated to advancing our members' lifelong involvement in Judaism through worship, learning, good deeds, and congregant to congregant connections.

Jonathan Singer,
Richard and Rhoda Goldman Senior Rabbi
Beth Singer,
Richard and Rhoda Goldman Senior Rabbi
Sydney B. Mintz, Rabbi
Ryan Bauer, Rabbi
Carla Fenves, Rabbi
Jason Rodich, Rabbi
Marsha Attie, Cantor
Arik Luck, Ben and A. Jess Shenson Cantor
Roslyn Barak, Senior Cantor Emerita
Stephen Pearce, PhD, Sr. Taube Scholar and
Rabbi Emeritus
Rabbi Lawrence Kushner, Emanu-El Scholar
David N. Goldman, Executive Director
and General Counsel
Terry Kraus, FTA, Director of
Membership Services
Elena Gary, Chief Financial Officer
Ariana Estoque, M.Ed, Director of
Adolescent and Adult Education
Flora Kupferman, Interim Director of
Youth Education
Svetlana Leykin,
Director of Facilities and Special Events
Penny Mika, Director of Operations
and Office Administration
Julie Weinberg, Director of Development
Lani Zinn, Senior Director of Development
Byron Gordon, ChronicleSF Manager

Members of the Board of Directors

President, Donny Friend
Vice President, Mark Lehmann
Vice President, Paul Zarefsky
Treasurer, Sasha Kovriga
Secretary, Erika Coplon

Dale Boutiette	Rachel Melman
Sandi Bragar	Abby Porth
Steve Cohen	Paula Pretlow
Barrett Cohn	Joel Roos
Stuart Corvin	Jackie Safier
Jill Einstein	Rita Semel
Lara Ettenson	Jim Shapiro
Ellen Fleishhacker	Hilary Zarrow
Alan Greinetz	

The Temple Chronicle (USPS 023-317) is published monthly except June and July for \$36 per year by The Congregation Emanu-El, Two Lake Street, San Francisco, CA 94118. Periodicals Postage Paid at San Francisco, CA, and at additional mailing offices

POSTMASTER: Send address changes to The Temple Chronicle at Congregation Emanu-El, Two Lake Street, San Francisco, CA 94118.

ADULT SHABBATON WEEKEND **co-sponsored with** **Hebrew Union College**



CONGREGATION
EMANU-EL



Torah At Asilomar: **Opening the Gates of Meaning - a retreat**



Join us at the beautiful **Asilomar Retreat Center** for a retreat led by our rabbis and leading Jewish studies professors. The Theme is: Hineni, Opening the Gates of Meaning - Empowering ourselves as we step forward and say "Here I am, ready to own my religious tradition."

Friday, July 27, 1:30 pm to
Sunday, July 29, 1:30 pm

Single occupancy \$750
Double occupancy \$600

Faculty

Rabbi Aaron Pankin,
President of the Hebrew Union College

Rabbi Josh Holo,
Dean of Hebrew Union College,
Los Angeles

Professor Miriam Heller Stern,
National Director of the School of
Education

We will join together in a beautiful setting to learn, build community, enjoy Shabbat, Sing, Hike, Eat – all those fun West Coast Jewish things! The cost includes meals and lodging as well as the learning.

Questions

Contact Ariana Estoque:
aestoque@emanuelsf.org or
by phone (415) 751-2541 Ext. 307