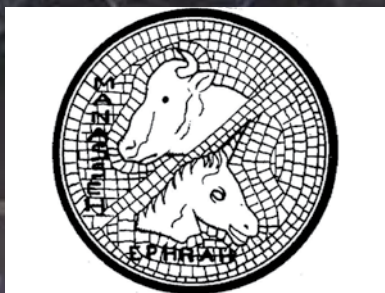


Emanu-El^S_F

**Embrace a Living
Judaism!**



Exclusive interview with *Futures* founder, Esta Soler



12th grade Confirmation



Asilomar retreat – Deadline extended!

Hineini – Opening the Gates of Meaning

Congregation Emanu-El and Hebrew Union College Shabbaton Retreat at Asilomar!

Friday, July 27, 1:30 pm to
Sunday, July 29, 1:30 pm

An adult-only Shabbaton Retreat—two days of immersive fellowship, community building and Jewish learning with the scholars of HUC-JIR and Congregation Emanu-El at the beautiful Asilomar Retreat Center in Pacific Grove, CA.



Rabbi Aaron Panken, Ph.D. – President of the HUC-JIR and expert in Rabbinic and Second Temple Literature.

Dr. Josh Holo – Dean of the Los Angeles Campus and Associate Professor of Jewish History at HUC

Rabbi Andrea L. Weiss, Ph.D. – Associate Professor of Bible at the Hebrew Union College-Jewish Institute of Religion in New York

PLUS Senior Rabbis Jonathan and Beth Singer and Emanu-El Scholar, Lawrence Kushner

Cost: (includes materials, room, board and all meals)

\$750/pp for single occupancy room

\$600/pp for double occupancy

DEADLINE TO REGISTER EXTENDED TO MAY 21!

Space is limited!

emanuelsf.org/shabbaton-retreat-at-asilomar/

Questions? Please contact Ariana Estoque, Director of Adolescent and Adult Education, at 415-751-2541 x307 / aestoque@emanuelsf.org

SHAVUOT RUTH

By Richard and Rhoda Goldman Senior Rabbi Jonathan Singer

At the end of the Jewish conversion process, we convene a *beit din* (religious court) to interview the candidate. Often, the *beit din* is composed of a tribunal of rabbis, and the experience for both clergy and convert is extraordinarily moving and meaningful. Last month, standing on China Beach, Rabbis Bauer and Fenves and I interviewed a member wishing to convert, and then witnessed him immerse himself in the coastal waters as he became part of the Jewish people. It was a beautiful moment and a highlight of our rabbinic work.

This month, we celebrate Shavuot, which commemorates the giving of the Torah at Mount Sinai as well as honoring the wheat harvest in the Land of Israel. It is customary to read the Book of Ruth, found in the Tanach, during Shavuot — possibly because it describes the spring harvest. But it is also thought that we read Ruth's text on Shavuot because her act of accepting the God of the Israelites exemplifies a person receiving Torah today. Ruth is the quintessential convert, and her name is invoked whenever we perform a conversion ceremony. To the person wishing to convert, we ask: "Will you uphold Ruth's example who said, 'Wherever you go, I will go. Where you lodge, I will lodge. Your people shall be my people, and your God, my God.'"

If the latter justification for invoking the Book of Ruth on Shavuot is the correct one, it echoes the notion that, whenever someone embraces Judaism, it is as if their soul were at Sinai. From that perspective, the Torah is always being given as long as there are people with open hearts and minds to receive it. Judaism is not only transmitted by genes; one can embrace Jewish life and be a deliverer of

Torah to the entire community. The tradition teaches that Ruth was the great-grandmother of King David, so that means the messianic line begins with a convert; it does not date back to Moses! Further, the journey of conversion was HER journey — with no rabbi present, no male authority figure validating it — just a woman in front of her mother-in-law declaring her new identity.

A midrash teaches that the burning bush was always aflame, and that what distinguished Moses is that he stepped aside to really observe it and absorb its meaning. Perhaps that is another way of understanding the notion that Torah is always being given. Ruth looked deeply into the tree of Jewish life and then embraced Torah.

That day at the beach, I was so moved as I watched Torah being given in the moment. I hope you will join us this month with our communal partners for a Tikkun Leyl Shavuot celebration at the JCC. Our challenge, born Jewish or not, is to be open to observing and discerning, and then to receiving. Sinai is always around us, the bush is still aflame, and we can choose to receive and embrace a living Judaism!



IT'S MEMBERSHIP RENEWAL TIME!

Please watch for your bright yellow envelope this month and enjoy the ease of renewing online. You can log into your MyEmanu-El account at www.emanuelf.org, click a few buttons, and then check this task off your list. Please note that we do not store your payment information, so annual renewal is required.

Questions about your membership renewal? Contact Director of Membership Services Terry Kraus at membership@emanuelf.org or (415) 750-7552.

HIGH HOLY DAY PARKING - IMPORTANT!

Over the past few years, the parking we've been able to rent from the Presidio has been in less desirable locations, which has lowered demand; therefore, we will no longer be offering parking and shuttle services for the High Holy Days. However, for senior and disabled members, we will continue sharing the cost of SilverRide transportation, and this service will be available for the Erev Rosh Hashanah, Kol Nidre, and Yizkor services at the temple. Please watch for the signup form for SilverRide in your July mail.

CONGREGATION EMANU-EL CELEBRATES OUR LONG-TIME MEMBERS

On March 16, the bi-annual Congregation Emanu-El Longtime Membership Dinner was held in Guild Hall. We celebrated longtime (25 years or longer) members and their families who have been committed to our very special community for decades. Several of these members shared stories about their emotional ties to Emanu-El — nostalgia that elicited both laughter and feelings of appreciation from all in attendance that evening.

Ron Kaufman shared his memory of having graduated from business school nearly 60 years ago. When he told his new boss he had no idea which temple to join, he was advised to join Emanu-El because it had “the best sermons in town.”

Cathryn Hillard recalled her b’nei mitzvah with her brother, Tom Sampson, in 1994. Her father, who had recently undergone hip replacement surgery, was not able to walk

down the aisle. So So Cathryn and Tom decided to go to him to help him put on his tallit. Somehow, he then found the strength to stand up, approach his daughter and son, and put on his tallit in front of the family.

Debra Eisendrath previously worked at Emanu-El, answering phones at the front office. In 1975, she had come to San Francisco from Milwaukee. She and her husband discovered Emanu-El for the High Holy Days and then attended our congregation’s new member dinner at the home of (then) Senior Rabbi Joseph Asher where, in her words, they were “welcomed with open arms.”

Steve and Marsha Rubin recounted their finding each other in San Francisco, falling in love, and being married by Roslyn Barak. Marsha also described her bat mitzvah in 1995 as “an amazing experience.”



Joe and Betty Hartog
Members since 1972



**Joyce Lampert (L),
Inge Berliner (R)**
Members since 1960



**Eleanor Coffman (R) Member
since 1957 and Ruth DeHovitz (L)**
Member since 1971



Naftali Zisman
Member since 1986



Sally Kaufmann
Member since 1961



Cathryn Hilliard
Member since 1987



UPCOMING EVENTS

TIKKUN LEYL SHAVUOT SAN FRANCISCO WHERE SINAI MEETS CALIFORNIA STREET!

A FREE community-wide, family-friendly event starting on Erev Shavuot and ending at dawn! Presented by Congregations Beth Sholom, Sherith Israel, and Emanu-El; the Jewish Community Center of San Francisco; and Lehrhaus Judaica.

Saturday evening, May 19, 6:00 – 9:00 pm at the JCCSF
10:00 pm to dawn at Congregation Beth Sholom



MUSIC • LEARNING • FOOD • FAMILY EVENTS • UNITY

Featuring rabbis, cantors, educators, and musicians from the San Francisco Jewish community and The Levoná Ensemble. Master musicians from Syria, Israel, and the United States will combine Flamenco, Arabic, Jewish, and other musical traditions, and weave them together with stories, both ancient and new. The evening will include a buffet dinner, candle lighting, a walk, community learning, and more!

Please visit the Lehrhaus Judaica website for the full schedule.

Program sponsors:

- The Koret Foundation
- San Francisco Jewish Community Federation
- The J.
- Honeymoon Israel
- KehillahSF
- Bechol Lashon
- Shalom Hartman Institute



MUSIC OF REMEMBRANCE

With Mina Miller, President and Artistic Director, Music of Remembrance
Friday, May 4, 6:00 pm, Main Sanctuary

Since 1998, Music of Remembrance has remembered the Holocaust through music. At this evening's Classic Shabbat service, founder and artistic director Mina Miller will speak on the subject of Music of Remembrance's upcoming concert, "Voices of Witness," which will be held on May 24 at the San Francisco Conservatory of Music. This varied program features inspiring music of Holocaust resistance and two new commissions exploring Japanese and Japanese-American wartime experience.

12TH GRADE CONFIRMATION 5778/2018 OF HAVURAH EPHRAIM

Friday, May 18, 6:00 pm, Martin Meyer Sanctuary

Join us as our graduating seniors lead this festive Shabbat service. Students will share readings and songs and participate in the confirmation chain of tradition, receiving the Rabbis' Honor Cup. We will also honor members of the confirmation classes of 1967 and 1968.



UPCOMING EVENTS

JCRC INVEST IN PEACE PANEL DISCUSSION

Tuesday, May 8, 7:00 – 9:00 pm, Martin Meyer Sanctuary



David Barkan and Etai Freedman

Invest in Peace, a project of the Jewish Community Relations Council (JCRC), involves a coalition of change makers who support the self-determination of Israelis and Palestinians and who are dedicated to championing efforts on the ground that move these communities toward a shared future.

Two representatives from Invest in Peace's featured Peacemaker Organizations — David Barkan of Ultimate Peace and Etai Freedman of Middle East Entrepreneurs of Tomorrow — will discuss their ventures. The panel will be moderated by Karen Stiller, Director of JCRC's Middle East Project.

PREVENTING THE NEXT GENERATION OF #METOO



Tuesday, May 15, 7:00 – 9:00 pm, Reuben Rinder Chapel

#MeToo. How did we get here? How do we prevent another generation of this?

We won't prevent it by looking at the past; we have to look toward our future and create the world we want for our children by teaching them that another way is possible. Join us while we talk about parenting strategies to ensure that our children do not repeat these senseless patterns in the future.

Please register for this discussion at our website.

MARC YUDOF IN CONVERSATION WITH ABBY PORTH: BDS – A THREAT TO ACADEMIC FREEDOM AND JEWISH LIFE ON CAMPUS

Wednesday, June 6, 7:00 – 9:00 pm, Martin Meyer Sanctuary



Abby Porth and Marc Yudof

Nowhere else in the nation is the Boycott, Divestment, and Sanctions (BDS) movement more active than in the Bay Area. What can the Jewish community do to counter that narrative about the Israeli-Palestinian conflict and set the record straight? What has already been done?

Follow a discussion between Abby Porth and Mark G. Yudof, who are on the front line of fighting the intimidating threat.

Abby Porth is Executive Director of the Jewish Community Relations Council and currently serves on Emanu-El's Board of Directors. Among Abby's favorite efforts has been the 2016 launch of an innovative public affairs strategy — never before tried in the U.S. — to shift public discourse in the Bay Area away from the BDS movement and toward the Jewish community's aspirations for a two-state solution to the Israeli-Palestinian conflict.

Mark G. Yudof chairs the Academic Engagement Network, an organization of American university and college faculty and staff formed for the purpose of opposing BDS on a broad scale. Professor Yudof served as the 19th president of the University of California and is a recognized authority on constitutional law, freedom of expression, and education law. He is the author of *When Government Speaks* and the co-author of five editions of *Educational Policy and the Law*.

MAY

Friday, May 4

5:30 pm, First Friday Under Five Service (Martin Meyer Sanctuary)

6:00 pm, Classic Shabbat Service (Main Sanctuary)

Saturday, May 5

10:30 am, Shabbat Morning Service (Martin Meyer Sanctuary)

10:30 am, Shabbat Morning Service (Main Sanctuary)

Friday, May 11

6:00 pm, One Shabbat Service (Martin Meyer Sanctuary)

8:30 pm, Young Adult Late Shabbat Service (Martin Meyer Sanctuary)

Saturday, May 12

10:30 am, Shabbat Morning Service (Martin Meyer Sanctuary)

10:30 am, Shabbat Morning Service (Main Sanctuary)

Friday, May 18

6:00 pm, One Shabbat Service and 12th Grade Confirmation Graduation (Martin Meyer Sanctuary)

Saturday, May 19

10:30 am, Shabbat Morning Service (Main Sanctuary)

10:30 am, Shabbat Morning Service (Martin Meyer Sanctuary)

Friday, May 25

6:00 pm, One Shabbat Service (Martin Meyer Sanctuary)

Saturday, May 26

10:30 am, Shabbat Morning Service (Main Sanctuary)

10:30 am, Shabbat Morning Service (Martin Meyer Sanctuary)

JUNE

Friday, June 1

5:30 pm, First Friday Under Five Shabbat Service (MMS)

6:00 pm, Classic Shabbat Service (Main)

Saturday, June 2

10:30 am, Shabbat Morning Service (Main)

10:30 am, Shabbat Morning Service (MMS)

Friday, June 8

6:00 pm, One Shabbat Service (MMS)

8:30 pm, Young Adult Late Shabbat Service (MMS)

Saturday, June 9

10:30 am, Shabbat Morning Service (Chap)

10:30 am, Shabbat Morning Service (MMS)

Friday, June 15

6:00 pm, One Shabbat Service (MMS)

Saturday, June 16

10:30 am, Shabbat Morning Service (Main)

10:30 am, Shabbat Morning Service (MMS)

Friday, June 22

6:00 pm, One Shabbat Service (MMS)

Saturday, June 23

10:30 am, Shabbat Morning Service (Main)

10:30 am, Shabbat Morning Service (MMS)

Friday, June 29

6:00 pm, One Shabbat Service (MMS)

Saturday, June 30

10:30 am, Shabbat Morning Service (Chap)

JULY

Friday, July 6

5:30 pm, First Friday Under Five Shabbat Service (MMS)

6:00 pm, Classic Shabbat Service (Main)

Saturday, July 7

10:30 am, Shabbat Morning Service (Chapel)

Friday, July 13

6:00 pm, One Shabbat Service (MMS)

8:30 pm, Young Adult Late Shabbat Service (MMS)

Saturday, July 14

10:30 am, Shabbat Morning Service (Chapel)

Friday, July 20

6:00 pm, One Shabbat Service (MMS)

Saturday, July 21

10:30 am, Shabbat Morning Service (Chapel)

Friday, July 27

6:00 pm, One Shabbat Service (MMS)

Saturday, July 28

10:30 am, Shabbat Morning Service (Chapel)

SPONSOR AN ONEG SHABBAT

Sponsoring an Oneg-Shabbat on Friday evening is a sweet way to honor or remember a loved one or to celebrate a *Simcha*. When you sponsor an Oneg-Shabbat, you help us welcome Shabbat with the warmth and community that are characteristic of our congregation. For more details, contact Svetlana Leykin at sleykin@emanuelfs.org or call (415) 751-2541 x123.

Thank you to the following for co-sponsoring recent Oneg-Shabbat receptions:

- Melanie Miguel, Renee Miguel, and Barry Miguel, in honor of the baby naming of Sabina Rey Sisson – Ruth bat Ivria v Daniel
- The Steifman Family, in honor of the Bar Mitzvah of Bennett Steifman
- The Shragge Family, in honor of the Bar Mitzvah of Henrik Shragge and the marriage of Abraham and Ogi Shragge



A FUTURE WITHOUT VIOLENCE

By Byron Gordon, Content Marketing Manager

If you can imagine a future without violence, then Emanu-El member Esta Soler — founder

of the organization *Futures Without Violence* (FUTURES) — is right at its center. For the past 30+ years, Esta has been fighting to help victims of domestic abuse, assault, and sexual harassment. She recently sat down with me to discuss her organization's ongoing mission and how, in this moment, tremendous opportunity exists to make a difference in the lives of those who need it most.

Byron: The subject of sexual harassment exploded late last year with the allegations of sexual abuse and assault by film producer Harvey Weinstein. We have a president who is accused of sexual harassment and/or misconduct. It seems like, over the past six months, it's been nothing but story after story in our news media of men being accused of sexual harassment or assault. For more than 30 years, you've been a pioneer in the fight to reduce sexual violence in the homes and workplaces of America. What are your thoughts about what is happening today?

Esta: One of the things we always say at FUTURES is that movements are about moments. And we are living in a moment right now where the whole world is paying attention to sexual harassment and assault in the workplace. We're in the first phase of that work. The stories are coming out. There was a wonderful ad in the New York Times, the #hesaid, #shesaid, #hesaid, #shesaid, #shesaid, and it was a perfect example of believing people when they tell you their story. For too long, too many people were afraid to tell their story, and if they did tell their story, then folks were saying we're not so sure that it's true. I think that has now changed. So, with our friends in Hollywood, we're not just saying time's up and donning black, but we're making a commitment to end violence of any kind, not just in Hollywood but across other industries, particular with low-wage workers. For FUTURES, this is our moment to get the work done. People are paying attention. There are solutions. We can make the workplace safer.

Byron: Talk about your organization's journey into making our society a safer place.

Esta: When our movement first began to build, we were able to get passed our first piece of legislation in 1984.

FUTURES, along with other organizations, went to Congress and we were able to do something for women who were battered and seeking services. Back then, there wasn't a safety net of resources or any dedicated funding to help victims of domestic abuse. But it didn't happen overnight. It took 3 to 4 years to get Congress to pass legislation. At the time, representatives in Congress were calling it the "take the fun out of marriage" act. Ten years later, when the OJ trial was happening and the story of domestic violence was on the front page, then President Clinton and Senator Joe Biden helped us pass the Violence Against Women Act (VAWA) in 1994. It was the first comprehensive legislation

We can create futures without violence.

Our capacity to do so is written into our biology - it is the story of our evolution. We have neurotransmitters in our brain and bundles of nerves in our chest that enable trust, care-giving and respect. We have genes in the cells of our bodies that increase empathy and social connection. When we cultivate these inborn capacities for good in ourselves and others, individuals and communities thrive. When societies build upon these human tendencies, they are strong, and bend the arc of human history towards compassion and equality and a future without violence for all. — Dacher Keltner and Diana Divecha

against domestic violence, and we were one of a few groups sitting at the table to help make it happen.

If we can achieve a 60-percent reduction in domestic violence because we changed the laws and made people who are perpetrators accountable to the law, and we help to train the police, and educate the judiciary, and run campaigns that say there is no excuse. If we can do all of this, then right now we are living in another moment where we can accomplish even more. This moment has moved from the home to the campus to the workplace. Now we have to make sure that the policies and the accountability and the hotlines and the code of conduct of what is acceptable in the workplace is promulgated across the United States.

Byron: Is more legislation needed to address the issue of sexual harassment?

Esta: I think there is more legislation that we probably need. But, by and large, most of this could get done without a lot of new legislation. There needs to be more clarity on who is accountable for what. Rape is on the books, for example. People know the difference between a misdemeanor and a felony. We've litigated that for the past 25 years. You're still going to have uneven judiciary responses, however. But

we're human. What we do as activists or as consumers or parents is a call for justice in all the different realms.

Byron: Included in the VAWA legislation is the right for victims to sue their accusers.

Esta: Yes, but it's still very difficult to get it done. My dream is that we can get to a place where we can give our young people the tools to have and create healthy relationships. My belief is most of this violence that we see and hear about is learned behavior. You are not born with this. You learn it. And then your environment and the people who are raising you and the people who are teaching you and the people who are rewarding you are not interrupting it.

Violence is a learned behavior. And if it's a learned behavior, you can unlearn it. But we need to make sure that people who have power over others are held accountable, so we can unlearn this. While there is a role and place for a legal response, lawsuits

are insufficient when tackling this problem. We should make sure our organizations and education systems are given the tools they need so they can teach the next generation, so we don't have to litigate all of this. But let's never give up and say there is never "nothing we can do about this."

Byron: I know you are very proud about a new program of yours called "Coaching Boys into Men." Tell me more about it.

Esta: It's about engaging men in the solution. It's not about indicting men. Most men, from parents to brothers to teachers to coaches, want to do the right thing. We ran this wonderful campaign in the late 90s and early 2000s, with the National High School Athletic Coaches Association (NHSACA). It's some of the best work we've ever done. It was a public service announcement. NHSACA told us that the research showed that men weren't part of the solution and they wanted to be.

So together we built this program, Coaching Boys into Men, that is in thousands of high schools across the country, both public and private. Locally, we're doing it with both the San Francisco and Piedmont Unified School Districts. It's about giving coaches the tools to be able to talk to their athletes about good upstanding behavior and how to have relationships with women and girls.

It's remarkably easy to do if you have a coach who has the will and the desire to do two things: (1) win games; and

(2) win them in a way where they are modeling respectful, upstanding behavior. About seven years ago, with the University of California, Davis and a large grant from the Centers for Disease Control (CDC), we ran a randomized control trial. And what we found was, the program not only worked to increase positive upstanding behavior, but also decreased abusive and assaultive behavior. And now the CDC is recommending it as the only program of its kind. The program was based on research about adolescent development and adolescent brain development. It's one of the reasons why we were able to get it across the finish line.

Byron: Are there any particular stories that inspire you?

Esta: We were working with Alisal High School Trojans basketball head coach Jim Rear of Salinas Valley. He came to talk to the San Francisco Giants. We do this event every year with the Giants. It's called "Strike Out Violence." Jim Rear was talking to the Giants players about why this program works so well and how his players are doing better because of this program, especially

when it comes to learning about issues of respect.

All of a sudden, he looks up and he sees his nine-year-old daughter in the clubhouse. He calls her up. He stops and looks at these professional ball players. He said, "I do this because I know it's the right thing to do." And then he followed it up with: "But the real reason I do it is because she's my daughter. And I don't want anybody to ever hurt her. I have my own small role in trying to make this world a better and safer place for my daughter." I watched these big professional athletes and some of them began to cry. And I hear stories like this all of the time.

Recently, I was writing thank you cards for our year-end gifts. I received a note from a 13-year old with a \$5 bill saying "Thank you. My mom has been hurt a lot, but I know people are out there who care and are working on solutions." These are the stories that inspire me.

Byron: Your organization has several offices around the country. What is each one responsible for?

Esta: We have a large presence in Washington D.C. It's where we lobby Congress and work on legislation. It's all about policy and advocacy. What we accomplish there has an impact on large numbers of people. We also have an office in Boston. This is because, many years ago, we started

continued on page 13

COMMUNITY ENGAGEMENT

DAYTIME PROGRAMS AT THE TEMPLE

Meet other congregants at these weekday opportunities at the temple! Questions? Contact Rebecca Reiner.

All Daytime Events listed are at Temple Emanu-El

Cooking for Congregants

Thursdays, May 24 and 31, 9:00 – 11:00 am, Kitchen

Do you enjoy working in the kitchen and helping others at the same time? Sign up for *Cooking for Congregants*, led by two Emanu-El members, where you will prepare meals for congregants facing a recent illness, death, or birth.

When someone we know is going through a challenging time, our natural reaction is to help, although we may not know exactly what to do. For those in need, food frequently becomes a low priority, so the support provided by Cooking for Congregants can make a huge difference! As volunteer Sari Swig says, "There is no better gift to yourself than to help others," while a recipient of meals expresses how "It is such a lovely gesture of community... I was most grateful."

Register now to fulfill this mitzvah! All menus, ingredients, and storage containers are provided. And if you know a congregant who would benefit from a few delivered meals, please let us know.

For the Cooking for Congregants summer schedule, please check our online calendar or call the front desk.

The Stories of Your Life: Guided Autobiography and Life Review Writing

No charge; any skill level welcomed.

May 7, 10:00 am – Noon

Join this monthly group to share your unique life in writing while getting to know yourself and others better. The writing is done at home, then shared in class in a safe and structured way. If you would like to participate, please contact Rebecca Reiner.

Scrabble

No charge; drop in; all ages and experience levels welcomed.

Mondays, May 7, 14, and 21, 11:00 am – 3:00 pm

Do you enjoy the challenge of putting letters together to form words? Join the Scrabble group and play a rousing game or two! Expand your vocabulary along with your social circle. Bring a Scrabble set (optional) and, of course, your appreciation of words.

For the Scrabble summer schedule, please check our online calendar or call the front desk.

Mah Jongg

No charge; drop in; all levels welcomed. Rinder Chapel

Tuesday afternoons, May 1 and 15, 1:30 – 4:30 pm

Tuesday evenings, May 8 and 22, 6:00 – 9:00 pm

For the Mah Jongg summer schedule, please check our online calendar or call the front desk.

Bridge Club – Lessons and Game

Drop in; Cost: \$15 for members, \$20 for friends of members.

Tuesdays, May 1, 8, 15, 22, and 29, 10:00 am – Noon,

If you are beyond the level of beginner, join this very popular and lively group for duplicate-style bridge. Play while improving your game. No partner needed. Deborah Murphy is the instructor.

For our June schedule, please check our online calendar or call the front desk (note that the Bridge Group will be taking a break through the summer and will resume on September 4).

CONGREGANT GROUPS & GATHERINGS

Meet other congregants at these weekend and evening opportunities! Please register online.

Questions? Contact Rachel Schonwetter.

MISHPACHA

Programs for families with children ages 0–5.

Havdalah PJ Party

Saturday, May 12, 4:00 – 5:30 pm, Temple Emanu-El

Celebrate the end of another year of living Jewishly with little ones at a Havdalah Pajama Party! Along with our friends at Jewish Baby Network SF, PJ Library, and Interfaith Family, we'll join in a fun afternoon of games, toys, and songs, led by Early Childhood Educator Mimi Greisman. The afternoon will close with a Havdalah ceremony and pizza! Please register online so we know to expect you.

Got Shabbat? This summer at Emanu-El!

Saturdays, June 9 and July 16, 10:15 – 11:30 am, Temple Emanu-El

Families with young children (birth to 5 years old) are invited to join Mimi Greisman, Early Childhood and Family Educator, in celebrating Shabbat with family and friends. Activities will include songs, musical instruments, fun toys, Shabbat stories, a puppet show, parachute, and bubbles! Plus a light nosh!

THE TRIBE FOR WOMEN

The Tribe for Women is for moms with children ages 0–18.

Challah Baking

Wednesday, May 16, 6:30 pm, Temple Emanu-El

Join us in an intimate evening of learning how to make and braid challah and exploring the importance of Shabbat. At the end of the evening, you'll have a freshly baked challah to take home for your own Shabbat table!

Dietary restrictions? We'll have regular, vegan, and gluten free ingredients on hand! Please check our website for registration details.

THE TRIBE FOR MEN

A group of active and committed Emanu-El dads ages 30–50 with children ages 0–12, regardless of gender and/or sexual identity.

Annual Camping Trip with Rabbi Bauer and Cantor Luck!

Friday, August 17 – Sunday, August 19, Bort Meadow at Anthony Chabot Regional Park, Oakland

Enjoy two nights away, including Shabbat dinner in the woods. Registration is open on our website.

THE TRIBE FOR MEN AND THE TRIBE FOR WOMEN

Family Fun Day at the Vineyard Club – Back again by popular demand!

Sunday, May 20, 11 am – 4 pm, Rockmound Road, Geyserville (Sonoma County)

Join Rabbi Bauer and his family — along with other familiar and new Tribe families — for a special fun-filled day at the Vineyard Club as we celebrate the end of another great year. Relax, mingle, and play as you enjoy the lake and the beautiful surrounding scenery.

Activities will include swimming, water trampoline, tennis, basketball (bring your own game balls), and pétanque. A large sandy beach area and a full playground will be available, as well as large grassy area for game playing. Please bring your own games. You're also welcome to bring kayaks, stand-up paddle boards, and fun water toys!

A taco truck lunch will be provided!

Space is limited, so register soon via the Emanu-El website!

MEN'S GROUP

A monthly group for Emanu-El men focused on Torah study and socializing.

Sunday, May 20, 9:30 – 11:00 am, private residence (address provided upon registration)

This cross-generational group of men meets once a month at a private home to socialize and study with one of our clergy. This month, you'll have the opportunity to learn with Emanu-El's Senior Rabbi Emeritus and Tauber Scholar, Stephen Pearce.

If you're available to pick up bagels and snacks for this event (you will be reimbursed), please contact Rebecca Reiner.

Note: Men's Group events are congregant-only and require online registration.

Your Community Engagement Team:

Terry Kraus (tkraus@emanuelf.org, x111)

Monica Pevzner (mpevzner@emanuelf.org, x124)

Rebecca Reiner (rreiner@emanuelf.org, x170)

Rachel Schonwetter (rschonwetter@emanuelf.org, x171)

THE WOMEN'S GROUP

The Women's Group gatherings throughout the year are for all adult women of Congregation Emanu-El.

From Your Family's Kitchen

Wednesday, May 2, 6:30 pm, Congregation Emanu-El

Join the adult women of Congregation Emanu-El for a potluck dinner and cook-off inspired by the dishes we love from our own family kitchens! Prepare your finest kugel, your most savory chicken soup with matzah balls, or your sweetest Shabbat challah. You can choose to formally enter the cook-off in one of these three categories or, alternatively, bring a memorable dish from your childhood to share potluck style.

Attendees will be able to vote on the contest entries as well as share stories of favorite foods from their youth. And of course savor all of the delicious dishes at the event!

Check our website for additional registration details.

EMANU-EL IN THE NEIGHBORHOOD

Build Emanu-El in your community with neighborhood gatherings.

Do you love your local coffee shop or farmers market? And does bringing a little Emanu-El into your neighborhood appeal to you? If you're looking for a volunteer opportunity close to home, consider becoming a neighborhood liaison to reach out to congregants in need, coordinate neighborhood events, and welcome new congregants in the city. Or volunteer to host a local community get-together in your home. Interested? Let us know!

FRONT PORCH

This innovative program assembles congregants into groups and gives them the tools they need to build deep and meaningful relationships at home-hosted gatherings. The gatherings include short videos filmed by one of our rabbis and discussion questions on Jewish topics relevant to life today. Would you like to join a Front Porch group this fall? Fill out the interest form at <https://www.emanuelf.org/front-porch/>

As a large congregation, we recognize the importance of small group connection, so we create many opportunities for learning, socializing, and enjoying local culture together. These group gatherings generally occur in the evening hours or on weekends. Refer to the Community or Social Justice pages on our website for more information and staff contact information. Remember to register online in the MyEmanu-El portal for all of these programs (unless otherwise noted below) so we know to expect you.

COMMUNITY ENGAGEMENT

Two Baby Groups Available!

Drop in with your little one (birth to 18 months) and spend time with other parents. Join us as we prepare to welcome Shabbat on Fridays and celebrate Havdalah on Mondays. Enjoy music, stories, puppets, and more with early childhood educator Mimi Greisman. Take advantage of a wonderful opportunity to connect with other parents and create lasting friendships!

Bagels and Babies

Fridays throughout the year, 9:30 – 11:00 am, Martin Meyer Sanctuary

Mazel Tots!

Mondays throughout the year, 9:30 – 11:00 am, Martin Meyer Sanctuary

Members: No charge; Non-members: \$10/session (first session free)

Note: There will be no session on Monday, May 28 (Memorial Day)

Side By Side

Introducing our youngest children (18 months to 2.5 years) to a preschool environment, with their parent or caregiver by their side. Two sessions per week for 8 weeks (a total of 16 sessions).

Tuesdays/Thursdays, May 8 - June 28, 9:30 - 11:30 am

Temple Emanu-El

Cost: \$275 for members, \$360 for non-members



Rich in Jewish content, and celebrating our traditions and holidays, the Side by Side program is a wonderful introduction to preschool that deepens relationships in our community and launches a meaningful beginning to the school experience for both parents and children.

Next session starts May 8. Register online!

Stay tuned to future editions of the Chronicle for information on gatherings with our Interfaith Group (gatherings for interfaith members and families of Emanu-El)

TZEDEK COUNCIL

Meet your fellow congregants for these social justice opportunities! Questions? Contact Monica Pevzner.

What is the Tzedek Council?

The Congregation Emanu-El Tzedek Council was launched in August 2015 as a congregant-, board-, and clergy-run group, charged with the task of raising our participation and impact in the social justice arena.

HUMAN RIGHTS

UNITY GROUP

Congregation Emanu-El and First African Methodist Episcopal Zion Church sponsor an African-American/Jewish Unity Group that meets monthly.

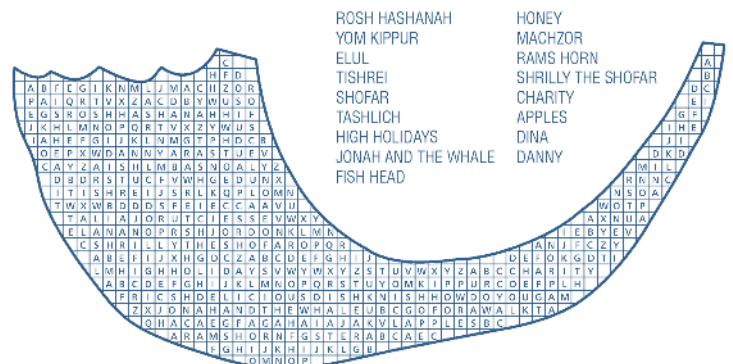
**Second Thursdays of the month, 6:00 – 7:30 pm
African American Art & Culture Complex,
762 Fulton Street, San Francisco**

For the past two years, a group of Emanu-El congregants have met monthly with members of the Bay Area African-American community – for fellowship and to advance the cause of racial justice in the Bay Area and beyond. This year, the Unity Group will partner with other organizations to push for bail reform legislation in California. We believe that this legislation, if passed, will make an enormous difference in the lives of many poor people and people of color. We would love to have you join us in this effort. You are welcome to come to meetings simply to learn more about the topic, after which you can decide how involved you'd like to be.

Please contact Saundrah Anjali (sanjali@emanuelf.org) for more information or to be added to our Unity Group mailing list.

SHOFAR WORD SEARCH

Find the words going horizontally and vertically!



doing a lot of work on early childhood development to the extent that we can prevent violence the earlier we intervene. Boston is a terrific hub of childhood development programs, universities, and hospitals. We're currently working on a major initiative out of Boston that's looking at reforming the childhood welfare system for the kids who are most at risk.

Finally, when Congress mandated that the Presidio become self-sufficient, we started thinking of moving our San Francisco presence to this specific location. We contemplated the importance of anchoring our offices in a public park to both increase our visibility and become part of the national conversation. It was a leap of faith, but we knew we wanted to be visible in a public park.

Byron: Part of this new Presidio office includes working on a big, new public education project for 2019.

Esta: Yes! I'm very excited that we're developing a public exhibit program called "Creating Futures Without Violence." We're not going to solve our problems if we don't engage the public. Noted American designer Jake Barton is our designer. The goal is to bring teachers and students into the conversation with the overarching theme being that we can create futures without violence. We can change the arc. We have to be intentional and thoughtful about it. That's our dream. We're building it now. Completion in 2019 is our goal. It will live here and live online. Our core DNA is an educational organization. Yes, we do legislation and, yes, we do systems change and programmatic work, but our core is giving people the tools they need so we can create a better future for everyone.

Byron: What advice can you share for those interested in pursuing a career in social justice?

Esta: First, I recommend seeking out smart and strategic advisers. Next, keep a box for all rejection letters from funders. Change takes time and persistence matters. But regardless of rejection or facing difficulties, it's key to always move forward. What I do to feed my soul when I hit a roadblock is read autobiographies of people who have made change in substantial and significant ways. This keeps me grounded in the fact that people have done this before, and there are road maps.

Byron: What has Emanu-El meant to you over the years?

Esta: I drive by Temple Emanu-El on my way home every day, and my heart always fills with joy. My daughter had her bat mitzvah there, as did many of her friends. I remember seeing the young people on the bimah, and I can still recall some of their sermons. I'm so thankful to Emanu-El for giving them such a good education. It makes me proud to be a member knowing that the temple has guided so many people, young and old, to be committed to social justice and the greater good.

YOUTH AND FAMILY

YOUTH AND FAMILY EDUCATION

It's hard to believe that the school year will be over this week! As I look back on the past months, I see a blur of faces, emails, family days, art projects, and armadillos. I hear singing, questions, ringing phones, squawking walkie talkies, words of encouragement, and thanks. I feel anxiety, excitement, exhaustion, gratitude.

I wish to thank: the clergy and staff of Emanu-El for placing their trust in me to lead Youth and Family Education this year; the many people who supported and assisted me; and all of the parents (and other adults), teachers, and students, without whom YFE would not exist. You're why I'm here, and I continue to be inspired by all of you every day and every week!

In the coming months, we will evaluate the program and plan new directions, while still retaining our traditions and repeating our successes. As we look toward the future with fresh eyes and new energy, we invite your feedback and participation in our process of growth.

We wish everyone a summer filled with relaxation and renewal, and we can't wait for what the next year will bring! Be in touch and keep learning. And please register your kids online for 2018–19. We'll send out the link soon.

With deep appreciation,
Flora

Donate Online and save postage, paper, and time!

Don't let unexpected *simchas*, *mitzvahs*, and Life-Cycle events catch you off guard!

Donating online is a quick and easy way to honor friends and family while supporting the synagogue. Just go to our website (www.emanuelsf.org), select "Click to Donate," and follow the steps to make a credit card gift over a secure server. Be sure to include all dedication information and let us know if we should notify someone. You will receive an electronic confirmation, followed by an acknowledgment letter in the mail. That's all there is to it! If you need assistance, contact Tyler Brown in the Development Department at tbrown@emanuelf.org or (415) 750-7554.

THANK YOU TO OUR DONORS

GENERAL FUND - *used where the need is the greatest at the Temple*

Anonymous Mrs. Lorna Altshuler	in observance of Clarisse B. Youler's Yahrzeit
Ms. Jody and Mr. David Barkin Richard and Kathleen Bilella	in honor of Joshua Endler's Anshei Mitzvah
Mr. and Mrs. Robert Blum	in honor of Patsy Lurie and Lisa Goldman's leadership of LifeStream
Mr. Michael Blumenthal	in observance of Joseph Blumenthal's Yahrzeit
Dr. and Mrs. Leonard Brant	in observance of Sarah Padams' Yahrzeit
Mr. and Mrs. Micah Broude Carol Brummerstedt and Carole Brandenburg-Smith Mr. and Mrs. Wayne Buder	in memory of Frances Green in memory of Olga Perkovic and Aaron Goodstein
Mr. Morton Cohen Mr. Morton Cohen Dr. and Mrs. Stuart Eisendrath	in observance of Alan Buder and Alyne Buder's Yahrzeits in observance of Mary Small's Yahrzeit in memory of Carol Ann Edelman in observance of Marvin Eisendrath's Yahrzeit
Mr. and Mrs. Elliott Felson Mr. and Mrs. Elliott Felson Dr. and Mrs. Douglas Goldman Dr. and Mrs. Douglas Goldman Mrs. Mary Haas	in honor of Jordan Hymowitz' birthday in memory of Sandy Hymowitz in memory of Carol Ann Edelman in memory of Elinore Green in observance of Ellen Haas and Harold Haas' Yahrzeits
Ms. Davida Hartman-Griffin Mr. Andy Heller	in memory of Jane Hufft in observance of Barbara Heller's Yahrzeit
Ms. Jodi Innerfield Mrs. Roean Iscoff Ms. Julie Jeremy	in memory of Frances Dinkelspiel Green in observance of Rita Mae Swartz Cooper's Yahrzeit
Mr. and Mrs. Scott Kahn Ms. Eleanor Kiselev Mr. and Mrs. Ronald Lackenbacher	in observance of Zel R. Kahn's Yahrzeit in memory of Maria Osherovick in observance of Lenny Lackenbacher's Yahrzeit
Mr. and Mrs. Paul Leiber	in observance of Paul Leiber Sr.'s Yahrzeit
Mr. Martin Lipton and Ms. Robbin Mashbein Ms. Terry Magnin Ms. Terry Magnin Mr. and Mrs. Howard Miller Mr. and Mrs. Jeffrey Moore Mrs. Ellen Newman Ms. Jill Nisson and Mr. Herk Confer Ms. Meta Pasternak	in observance of Sylvia Lipton and David Lipton's Yahrzeits in memory of Marian Levy in memory of Frances Green in memory of Frances Green in memory of Robert Magnin Newman in memory of Rube Nisson in observance of Alan Pasternak's Yahrzeit
Ms. Jean Pressey Ms. Susan L. Rothstein and Mr. John Koepfel Mrs. Ilana Stern and Mr. Jeff Enquist Mrs. Sylvia Storey Mrs. Sylvia Storey Mrs. Sylvia Storey	in memory of Joseph Kaplan in memory of Robert J. Rothstein Jr. in memory of Frances Dinkelspiel Green in memory of Alan Stein in observance of Samuel Storey's Yahrzeit
Mr. and Mrs. Stuart Tanenberg	in observance of Max Oishan's Yahrzeit
Ms. Joan Titus Mrs. Mary Ann Tonkin Ms. Maria Urman	in memory of Frances Green in observance of Mike Brown's Yahrzeit in observance of Beyla Urman's Yahrzeit
Mr. and Mrs. Nick Vestel Mr. and Mrs. Nick Vestel	in memory of Khana Broitman in observance of Nachman Broitman's Yahrzeit
Mr. and Mrs. Murry Waldman Mr. Herbert Weiner	in memory of Morton Yolles in observance of Olga Magda Weiner's Yahrzeit
Jill Weinreich	in honor of Anita Barzman, M.D.'s Anshei Mitzvah

GENERAL FUND FOR TEMPLE FLOWERS

The Shragge Family	in honor of the Henrik Shragge's Bar Mitzvah and Abraham and Ogi Shragge's marriage
The Steifman Family	in honor of Bennet Steifman's Bar Mitzvah
Mr. and Mrs. Charles Sugarman	in memory of Anne Liss Solomon

CANTORS' MUSIC FUND - *supports the Congregation's music program and is used for charitable giving at the Cantors' discretion*

Ms. Donna Alban	in observance of Sally Waterman and Jan Alban M.D.'s Yahrzeits
Dr. and Mrs. Leonard Brant	in observance of Rebecca Brant's Yahrzeit
Mrs. Betty Dvorson Ms. Linda Gerard and Mr. Daniel Grossman	in memory of Marian Levy in appreciation of the Clergy's kindness after the passing of Misha Grossman
Mr. Alan and Ms. Susie Greinetz	in honor of Toba Greinetz, Elaine Magnin, Donald Magnin, and Earl Greinetz' Yahrzeits
Ms. Susan Kitchell and Walker Black Dr. Sheldon Levin	in observance of Michael Black's Yahrzeit
Ms. Linda Liebschutz and Mr. Joseph Taylor Mr. Randall Maycock and Ms. Karen Barton-Maycock	in appreciation of Cantor Luck for Dolores Levin's memoriam in observance of Kathleen Taylor's Yahrzeit
Mr. and Mrs. Howard Miller Mr. and Mrs. Leonard Rosenberg	in appreciation of Cantor Attie, Rabbi Bauer, and Rabbi Mintz for guidance during Dan Barton's Shiva in memory of Benjamin Dorfman in observance of Jeannette Rosenberg's Yahrzeit
Mr. and Mrs. Alan Rothenberg Jaimie Sanford and Guy Sanford	in honor of Susan's Anshei Mitzvah In honor of Laurence Sanford and in appreciation of Cantor Barak
The Steifman Family	in honor of Bennett Steifman's Bar Mitzvah

CARING COMMUNITY FUND - *supports our temple families by offering care and support to congregants in times of need*

Mr. and Mrs. Robert Futernick Ms. Julie and Mr. David Levine	in appreciation of Rebecca Reiner in honor of Susan Moldaw's work at Emanu-El
---	---

EMANU-EL COMMUNITY SERVICE FUND - *promotes and supports social action and community service programs*

Anonymous	in observance of Stanley A. Karatz' Yahrzeit
Mr. Ilya Berman and Ms. Larisa Lisitsa Mr. and Mrs. Charles Bleadon (2) Mrs. Adele Corvin	in observance of Zinaida Portnaya's Yahrzeit
Mrs. Stella Daniels	in honor of Susan Rothenberg's Anshei Mitzvah
Ms. Alison Datz and Mr. Joel Kamisher Ms. Miriam and Mr. Eric Reiter	in observance of Murray Goldstein's Yahrzeit
Mr. and Mrs. Aric Rubin Ms. Mauri Schwartz Mrs. Rita Semel and Ms. Elisabeth Semel	in observance of Gennadiy Govzman's Yahrzeit
	in observance of Rebecca Selinger's Yahrzeit
	in celebration of Tess Lehrer Schwartz
	in observance of Max Semel's Yahrzeit

EMANU-EL LIFE-CYCLE FUND - *enables all congregants to celebrate significant milestones, regardless of economic circumstances*

Ms. Terry Magnin	in celebration of Jacob Magnin McDonald's Brit Milah
Abraham and Ogi Shragge The Steifman Family	In celebration of their marriage in honor of Bennett Steifman's Bar Mitzvah

THANK YOU TO OUR DONORS

EMANU-EL PRESCHOOL FUND OUTREACH - provides scholarships and other support for our Early Childhood Education program

Mrs. Deirdre and Mr. Darryl Bosa
Mrs. Melissa Koenigsberg,
Mr. William Lee, and Maren Lee in memory of Sandra Hymowitz
Ms. Tatyana Lirtsman
Maggie Rothschild in honor of Montana Raphael

HAROLD DOBBS EARLY CHILDHOOD EDUCATION SCHOLARSHIP FUND - supports the Temple Emanu-El Preschool and early childhood programs

Ms. Marilyn Higuera in observance of Annette Dobbs' Yahrzeit

ONEG SHABBAT AND KIDDUSH FUND - provides for the weekly Shabbat Oneg, Kiddush, and other congregational receptions

Anonymous in memory of Harriet Mitchell
Mr. Francisco Caravayo-Strober in celebration of Francisco's
and Dr. Jonathan Strober Anshei Mitzvah
Mr. and Mrs. Joshua Endler in celebration of Joshua's
Anshei Mitzvah
Mrs. Jennifer and Mr. Peter Keith in honor of Joel Keith's Bar Mitzvah
Ms. Susan Moldaw and
Mr. Bob Stallings in honor of Congregation Emanu-El
Mr. Bryan and Ms. Kristin Posner in celebration of Kristin's
Anshei Mitzvah
Mr. and Mrs. Alan Rothenberg in celebration of Susan's
Anshei Mitzvah
The Shragge Family in honor of the Henrik Shragge's
Bar Mitzvah and Abraham and
Ogi Shragge's marriage
Mrs. Jill and Mr. Scott Snow in honor of Dylan Snow's Bar Mitzvah
The Steifman Family in honor of Bennett Snow's
Bar Mitzvah

PAUL J. MATZGER YOUNG ADULT FUND - supports programs and leadership development for the Young Adult Community

Mrs. Lucia Matzger in memory of Paul J. Matzger

RABBIS' DISCRETIONARY FUND - used by clergy and senior staff for charitable giving

Mr. and Mrs. Laurence Baer in memory of Frances Axe,
Lewis Cody, Monroe Baer,
Barbara Cerf Baer, Noah Cody Scialom,
James Lewis Cody, and Hazel
Eisenberg
Sianya Espinoza in honor of Masha Lazer and
Greg Toland
Joann Forman in appreciation of Rabbi Beth Singer's
guidance during Teddy Forman's
Brit Milah
Mr. and Mrs. Robert Futernick in memory of Olga Perkovic
and Aaron Goodstein, and in
appreciation of Cantor Attie,
Rabbi Beth, Rabbi Jonathan,
Rabbi Bauer, and Jonathan Bayer
Ms. Linda Gerard and in appreciation of the Clergy's
Mr. Daniel Grossman kindness after passing of
Misha Grossman
Mr. and Mrs. Jeffrey Green in appreciation of Rabbi Bauer's
support and guidance
Mr. Alan and Ms. Susie Greinetz in honor of Toba Greinetz,
Elaine Magnin, Donald Magnin,
and Earl Greinetz' Yahrzeits
Mr. and Mrs. Louis Haas in observance of Frances Kantrow's
Yahrzeit
Dr. Michael Kaiser and in appreciation of Rabbi Fenves'
Mr. Larry Sanders assistance during Jeanne Kaiser's
Memorial Service

Dr. and Mrs. Stephen Leavitt
Elizabeth and Alan Levenson
Dr. Sheldon Levin

Mr. Randall Maycock and
Ms. Karen Barton-Maycock

Mr. and Mrs. James Rogers
Jaimie Sanford and Guy Sanford

Mr. Richard Sax

Mariana Schwartz

Sinai Memorial Chapel

The Steifman Family

Mr. Albert Villa (2)
Mr. and Mrs. Mark Wolly

ROBERT C. LEVY PRAYERBOOK FUND - provides for the purchase of prayerbooks and Torah commentaries

Mrs. Susan Kaplan in memory of Marian Levy

YOUTH EDUCATION FUND - supports special programming and materials for the Youth and Family Education program

Mr. and Mrs. Harry Battat in observance of Fanny Battat's
Yahrzeit
Dr. and Mrs. Daniel Karlsberg in celebration of Yonatan Vic
Karlsberg's Brit Milah
Mr. and Mrs. Daniel Klionsky in observance of Tsvia Gluzman's
Yahrzeit
Mrs. Eva Levi in memory of Andi Arrick
Mrs. Bonnie Magid in observance of F. Armand Magid's
Yahrzeit
Ms. Roni Silverberg in honor of Dylan Snow's Bar Mitzvah
Mrs. Lyudmila Sokolovskaya in observance of Rita Bogomolnaya's
Yahrzeit
Megan Steinwedel in celebration of Jaimie Beth
Steinwedel's baby naming

OTHER GIFTS

Ms. Meredith Goldsmith to provide balls and play equipment
for Emanu-El Preschool
Ms. Diana Grand to sponsor Rabbi Lappe Scholar in
Residence weekend
Mr. Jonathan Holman to sponsor Rabbi Lappe Scholar in
Residence weekend
Ms. Patricia Lurie to sponsor Barbara Waxman's
LifeStream talk
Laszlo N. Tauber in support of Tauber
Family Foundation, Inc. Jewish Studies Program

LIFECYCLES

SUMMER 2018 B'NEI MITZVAH

MAY

Lila Geller

Bat Mitzvah: May 5
Martin Meyer Sanctuary
Parents: Lisa Borah-Geller
and Jason Geller
Torah Portion: *Emor*



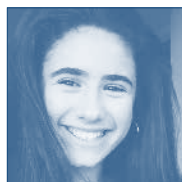
Ruben Pearl

Bar Mitzvah: May 5
Main Sanctuary
Parents: Jason and Nikki Pearl
Torah Portion: *Emor*



Dani Steinberg

Bat Mitzvah: May 12
Main Sanctuary
Parents: Jill and Seth Steinberg
Torah Portion: *Behar Behukkotai*



Nathan Scott

Bar Mitzvah: May 19
Martin Meyer Sanctuary
Parents: Stacey and Andy Scott
Torah Portion: *Bemidbar*



Lily Rose Maas-Heller

Bat Mitzvah: May 26
Martin Meyer Sanctuary
Parents: Andy Heller
and Stephany Maas-Heller
Torah Portion: *Naso*



Jonah Porth

Bar Mitzvah: May 26
Main Sanctuary
Parents: Abby and Jason Porth
Torah Portion: *Naso*



JUNE

Rose Gutierrez

Bat Mitzvah: June 2
Martin Meyer Sanctuary
Parents: Cherie Golant
and Ron Gutierrez
Torah Portion: *Behaalot'cha*



Gigi Ginocchio

Bat Mitzvah: June 2
Main Sanctuary
Parents: Pam Alter
and Paul Ginocchio
Torah Portion: *Behaalot'cha*



Zachary Ludwig

Bar Mitzvah: June 9
Main Sanctuary
Parents: Rochelle and David Ludwig
Torah Portion: *Shelach L'cha*



Ella Endler

Bat Mitzvah: June 9
Chapel
Parents: Josh and Jackie Endler
Torah Portion: *Shelach L'cha*



Jack Hsieh

Bar Mitzvah: June 16
Martin Meyer Sanctuary
Parents: Nicole and Tom Hsieh
Torah Portion: *Korah*



Dante Torrano

Bar Mitzvah: June 16
Main Sanctuary
Parents: Amy and Frank Torrano
Torah Portion: *Korah*



Benjamin Rossen

Bar Mitzvah: June 23
Martin Meyer Sanctuary
Parents: Sandra Bragar
and Jerome Rossen
Torah Portion: *Hukkath*



Moishe Imber Safdar

Bar Mitzvah: June 23
Main Sanctuary
Parents: Sarah and Shabbir Imber Safdar
Torah Portion: *Hukkath*



Asher Goldblatt

Bar Mitzvah: July 5
Israel
Parents: Stephen
and Marly Goldblatt
Torah Portion: *Pinchas*



CELEBRATING A SHEHECHEYANU MOMENT?

Congregation Emanu-El is an ever-present partner in the transitional moments of our members' lives. Be it a baby naming or *brit milah*, a bar or bat mitzvah, a conversion or wedding ceremony, or a recovery from illness, Emanu-El clergy and staff strive to ensure that each sacred "Shehecheyanu Moment" is deeply fulfilling and personal. A donation to the Emanu-El Life-Cycle Fund is a beautiful way to mark a personal milestone, to honor friends or family celebrating a happy experience, or to show gratitude for the services provided by our clergy during these profound moments. Please donate online at www.emanuelsf.org or call the Development office at (415) 750-7554.

MAZEL TOV TO OUR MEMBERS WHO HAVE EXPERIENCED JOY

Ivria and Daniel Sisson on the birth of their daughter, Sabina Rey Sisson

Lauren and Matthew Van Horn on the birth of their daughter, Adar Porto Van Horn

Leila and Jared Narvid on the birth of their son, Emil Isaiah Theodore Narvid

CONDOLENCES TO OUR MEMBERS WHO HAVE SUFFERED RECENT LOSSES

Jean Pressey on the death of her partner, Joe Kaplan
Family and friends of Jeanette Rude

Jami Zakem (Andrew) on the death of her father, and Jonah and Zoey Zakem on the death of their grandfather, Gary Lichtman

Adam Spiegel (Guillamette Brouillat-Spiegel) on the death of his mother, and Seth Spiegel on the death of his grandmother, Phyllis Spiegel

Kelly Bourke (Jeff Wartell) on the death of her father, and Dempsey, Buddy, and Isaiah Wartell on the death of their grandfather, Michael Bourke

Joannie Liss on the death of her daughter, and Cindy Morris and Sherri Sugarman on the death of their cousin, Anne Liss Solomon

Nina Schwartz on the death of her mother, Pauline Schwartz

Steven Dinkelspiel (Pamela) on the death of his aunt, and Anne Anderson (Lee) and Carol Berluti (David) on the death of their cousin, Frances Dinkelspiel Green

Eric Schoen on the death of his mother, Fritz Schoen

Steven Green (Alana) on the death of his grandmother, Shirley Szabo

Carolyn Hutchinson (Rick) on the death of her uncle, and Maya and Deanna Hutchinson on the death of their great-uncle, Russell Freedman

Jonathan Clark (Leslie Friedman) on the death of his mother, Harriet Clark

Lillian Archer (Adam) on the death of her grandfather, and Naomi and Margot Archer on the death of their great-grandfather, Massoud Yakov Rastegar

Kimberly Sanner (Dan) on the death of her grandmother, and Caden Sanner on the death of her great-grandmother, Carol Sege

CONGRATULATIONS TO OUR MEMBERS ON THEIR ACHIEVEMENTS

Adam Seligman on his new position as Vice President of Developer Relations at Google

Dovid Coplon on being named a new member of the Starr King Open Space Board of Directors

Steven Green, Jennifer Rosenthal, and Aaron Tartakovsky on being honored by Jewish Family and Children's Services for being among the founding team of 3gSF, a JFCS Holocaust Center forum for Bay Area grandchildren of Holocaust survivors

Jason Friend on being named a Schusterman Fellow by the Schusterman Fellowship, an organization igniting the leadership potential of professionals and lay leaders in the Jewish sector to create transformational change in the world

NEW MEMBERS - Welcome!

Harper Berry, Oscar Berry, Ms. Elsa Berry • Mr. Reid Tileston, Ms. Amanda Fraerman • Ms. Katherine Gomer • Daniel Kavalerschik, Ellie Kavalerschik, Dr. Danelle James, Dr. Edward Kavalerschik • Mr. Yonatan Melamed, Mrs. Rachel Barnard Melamed • Mrs. Chandra Sen • Mr. Dmitry Stepanenko, Ms. Anna Zilberley

REJOINED MEMBERS - Welcome Back!

Ms. Felicia Baskin, Dr. Emily Brewer • Ms. Sharon Miller, David Fisher, Ben Fisher, Mr. Alan Fisher • Mr. George Leeson, Ms. Lynn Hershman • Ms. Lauren Michaels • Mrs. Cindy Morris • Mr. David Pell, Herschel Pell, Octavia Pell, Ms. Gina Pell • Ms. Maxine Schur

APPRECIATED STOCK GIFTS

Did you know that you can make charitable donations – including your Emanu-El membership dues and Impact Fund gifts – from your appreciated stock? Now is an excellent time to avoid capital gains taxes while generously supporting the congregation. You may also reduce your taxable estate by donating stock.

If you are making a stock gift, please use the following information:

First Republic Securities Co, LLC
Account Name: Congregation Emanu-El
For Further Credit to Account Number: 33L064574
Clearing Firm: Pershing LLC
Pershing LLC DTC# 0443

Note: Please make the Development Office (tbrown@emanuelsf.org or (415) 750-7554) aware of your stock gift before it is transferred so your donation can be tracked and appropriately directed as you wish.

Corporate Matching

Many Bay Area companies, including Yelp, Clorox, Google, and Salesforce, will match your gift dollar-for-dollar. Please contact your company's matching gifts coordinator to obtain a matching gift form and determine whether your gift to Congregation Emanu-El can be matched.

Thank you to the following companies for matching our member's donations:

- Apple • Clorox • Google • Black Rock
- Deloitte & Touche • Salesforce • Visa • Gap, Inc
- Pacific Gas & Electric Co.



SUMMER 2018 UNDER THE DOME

SUMMER CAMP WEEKS:

- WEEK 1: (6/25 - 6/29) MESSY ART
- WEEK 2: (7/2 - 7/6) SCIENCE **CLOSED ON JULY 4TH**
- WEEK 3: (7/9 - 7/13) COOKING
- WEEK 4: (7/16 - 7/20) NATURE INVESTIGATIONS
- WEEK 5: (7/23 - 7/27) STORY WORKSHOP
- WEEK 6: (7/30 - 8/3) MAKER LAB

MONDAY - FRIDAY
9 AM - 1 PM

EXTENDED DAY OPTIONS AVAILABLE!

JUNE 25th -
AUGUST 3rd

FEES:

1 week: \$350
2 or more weeks:
\$300/week
All six weeks:
\$ 1,700

FOR ADDITIONAL INFORMATION OR TO REGISTER, CONTACT NIKAI GREENBERG AT
NGREENBERG@EMANUELSF.ORG

FROM THE DARKNESS OF #METOO TOWARD THE LIGHT: A HEART-OPEN EVENING WITH NESHAMA CARLEBACH

Tuesday, June 12, 7:00 pm, Temple Emanu-El

For both women and men, the #metoo and #timesup movements have brought so much to the surface in our lives - truth, pain, redemption and new understandings.

It is extremely hard to talk about these new understandings...but that is precisely why we MUST talk about them. Please join us for an intimate conversation with beloved performer Neshama Carlebach, whose direct experience with #metoo has been such a prominent part of the public discourse in the Jewish community.

We will talk with her about #metoo, her family's music, her father, Rabbi Shlomo Carlebach and the allegations brought against him -- and the growth we are all striving to experience in this time of heart-searing revelation.

Rabbi Sydney Mintz and Rabbi Ken Chasen will be facilitating the conversation. Together with Neshama, they will begin to explore ways to collectively find the healing, empowerment, love and hope so needed at this time.

The event will also include some music to strengthen our souls, featuring Neshama, our Cantor Marsha Attie and Rabbi Ken Chasen.



FINDING PEACE IN THE PROMISED LAND – LESSONS FOR LIFE AND LOVE LEARNED ON THE ISRAEL TRAIL

Tuesday, June 26, 7:00 – 9:00 pm, Martin Meyer Sanctuary

Aryeh Green, author of *My Israel Trail: Finding Peace in the Promised Land*, hiked the entire length and breadth of Israel on Shvil Yisrael — the Israel National Trail — following his divorce. The lessons he learned on this physical trek, which facilitated the personal growth he needed to move ahead with his life, as well as his intimate encounters with the land and people of Israel along the way, are the basis of his inspiring talks about the journey.

Aryeh (formerly Eric) is a San Francisco native from one of Temple Emanu-El's founding families. He is a dynamic, knowledgeable, passionate, and inspiring speaker. He serves as chief strategy officer at EnergiyaGlobal, an Israeli-based renewable energy platform for Africa, and as director emeritus of MediaCentral, providing services to foreign journalists in Israel. Aryeh was a senior advisor to Natan Sharansky and is a business executive and consultant, public diplomacy expert, and regional democracy activist.



Aryeh Green

CELEBRATE LAG BAOMER AT TERRAPIN CROSSROADS!

May 1, 5:30 – 8:00 pm

100 Yacht Club Drive, San Rafael

Join Rabbi Jonathan and Cantor Attie to celebrate Lag BaOmer, the 33rd day of the Omer, with a no-host gathering for an evening of music and fun at Terrapin Crossroads.

Weather permitting you will find our group outside. All are welcome to join anytime that evening!

For registration details visit emanuelf.org





Congregation Emanu-El
Two Lake Street
San Francisco, CA 94118
www.emanuelsf.org

PERIODICAL

We are a vibrant, sacred Jewish community that is dedicated to advancing our members' lifelong involvement in Judaism through worship, learning, good deeds, and congregant to congregant connections.

Beth Singer,
Richard and Rhoda Goldman Senior Rabbi
Jonathan Singer,
Richard and Rhoda Goldman Senior Rabbi
Sydney B. Mintz, Rabbi
Ryan Bauer, Rabbi
Carla Fenves, Rabbi
Jason Rodich, Rabbi
Marsha Attie, Cantor
Arik Luck, Ben and A. Jess Shenson Cantor
Roslyn Barak, Senior Cantor Emerita
Stephen Pearce, PhD, Sr. Taube Scholar and
Rabbi Emeritus
Rabbi Lawrence Kushner, Emanu-El Scholar
David N. Goldman, Executive Director
and General Counsel
Terry Kraus, FTA, Director of
Membership Services
Elena Gary, Chief Financial Officer
Ariana Estoque, M.Ed, Director of
Adolescent and Adult Education
Flora Kupferman, Interim Director of
Youth Education
Svetlana Leykin,
Director of Facilities and Special Events
Penny Mika, Director of Operations
and Office Administration
Julie Weinberg, Director of Development
Lani Zinn, Senior Director of Development
Byron Gordon, ChronicleSF Manager

Members of the Board of Directors

President, Donny Friend
Vice President, Mark Lehmann
Vice President, Paul Zarefsky
Treasurer, Sasha Kovriga
Secretary, Erika Coplon

Dale Boutiette	Rachel Melman
Sandi Bragar	Abby Porth
Steve Cohen	Paula Pretlow
Barrett Cohn	Joel Roos
Stuart Corvin	Jackie Safier
Jill Einstein	Rita Semel
Lara Ettenson	Jim Shapiro
Ellen Fleishhacker	Hilary Zarrow
Alan Greinetz	

The Temple Chronicle (USPS 023-317) is published monthly except June and July for \$36 per year by The Congregation Emanu-El, Two Lake Street, San Francisco, CA 94118. Periodicals Postage Paid at San Francisco, CA, and at additional mailing offices

POSTMASTER: Send address changes to The Temple Chronicle at Congregation Emanu-El, Two Lake Street, San Francisco, CA 94118.



CELEBRATE SHABBAT WITH YOUR FRIENDS FROM CONGREGATION EMANU-EL IN TAHOE!

Friday, July 13, 5:00 pm, Home of Jamie and Mark Myers

Please join us for our Second Annual Emanu-El Tahoe Shabbat. This year, Jamie and Mark Myers have graciously agreed to host us all.

Please come at 6:00 PM (Address provided once you have registered).

We will welcome in Shabbat with a brief musical service followed by dinner provided by Mark and Jamie. You are welcome to bring dessert or a beverage of your choice to share.

Emanu-El families and individuals are welcome to attend. Let's make this a memorable and joyous Shabbat as part of this summer's festivities.