

Emanu-El ^S_F



Back to School!



High Holy Days Preview
2018 - 5779



Fall Learning Programs



Elul Prayer Book



WELCOME BACK SHABBAT AND BARBECUE

Friday, August 24
6:00 pm One Shabbat Service
7:00 pm BBQ Dinner

Bring a friend to experience Shabbat at Emanu-El! Meet the clergy and catch up with fellow congregants while enjoying a barbecue dinner in our courtyard following the service. We look forward to kicking off another great year of spiritual togetherness and Jewish education with you!

Admission is free, but please register for this event online so we know to expect you.

HEADING HOME CAMPAIGN: WORKING TO REDUCE FAMILY HOMELESSNESS IN SAN FRANCISCO

As we approach the High Holy Days this year, members of Congregation Emanu-El can be especially proud of our role in reducing family homelessness in San Francisco. In 2016, San Francisco was facing its greatest family homeless crisis since the Great Depression. In response, Rabbi Ryan Bauer and the Tzedek Council announced during the 2016 High Holy Days that our congregation would take a leadership role in solving this problem by joining a public/private partnership initiative called the "Heading Home Campaign." Emanu-El played a key role as a convener of the initiative, which involved a collaboration between the City and County of San Francisco, Hamilton Families, Salesforce, Airbnb, and the San Francisco Giants (organizations that include many of our congregants in leadership positions).

The Heading Home Campaign sought to (1) reduce the wait time for homeless families to receive services and (2) provide rapid rehousing for homeless families. The campaign recently announced that it had successfully raised \$30 million and realized its goals in just one year's time. The homeless housing wait time has been reduced from 400 days to 90 days, and 237 families have been successfully placed in permanent housing.

By partnering with Emanu-El, Hamilton Families was able to serve 30% more homeless; 450 families (close to 1,500 participants) were sponsored. Every child and parent moved into housing received special gifts from their wish lists as well as necessary goods, including linens and other staples, to

help these families transition out of homelessness. Between our Youth and Family Education program, the Preschool, and general members of Emanu-El, we sponsored over 75 families! Our Tel Aviv preschool class even sponsored a Hamilton family as a class project!

While we are extremely proud of our role in this important campaign and what we have accomplished, there is more work to be done. Stay tuned for more information about our next campaign!



THIS IS REAL AND YOU ARE COMPLETELY UNPREPARED

By Richard and Rhoda Goldman Senior Rabbi Beth Singer

Back in the days of “Classical Reform Judaism,” we only recognized a handful of Jewish holidays — the High Holy Days, Chanukah, Purim, and Passover — but along with an increased sense of security in both our Jewish and American identities, we’ve “discovered” many of the other Jewish sacred times, such as Selichot, Tisha B’Av, and Shavuot. You may or may not have heard of these holidays, but if they are still unfamiliar to you, read up on them! The Jewish calendar is an eternal cycle of agricultural, historical, and spiritually powerful observances, including the month of Elul, a tradition I had never learned about when I was a kid. Elul consists of 29 days of power and possibility leading up to the High Holy Days.

What I learned about the High Holy Days growing up was twofold: Rosh Hashanah, which included services, dinner guests, and of course apples and honey; and Yom Kippur, which mostly involved playing with my other Jewish friends while our parents fasted and prayed, although we did come in to services to hear the shofar blown and to attend the children’s service. Then, a week after the High Holy Days, was our trip to the rabbi’s open house to visit his *sukkah*. And a week after that, we marched with the Torah (no dancing, though; dancing was undignified). Back then, I didn’t know about the integral relationships between all of these fall season holidays, and I certainly never considered the month prior to Rosh Hashanah and Yom Kippur as a time of preparation to deepen the High Holy Days experience. All I knew was that we called that period of time “August.”

Many of us seek spiritual growth through such disciplines as meditation, yoga, diet, and exercise — all paths toward a healthier, more peaceful life. But I also urge you to explore more deeply our own “homegrown” Jewish spiritual practices that, as my colleague Rabbi Aubrey Glazer notes, are “designed to sustain and improve the intellectual and spiritual potential within each of us, and to inspire us to act as agents of positive change in the world.”

This year, Elul starts on Saturday, August 11, and there are a couple of books I encourage you to read in preparation. In *This is Real and You are Completely Unprepared*, author Rabbi Alan Lew (of blessed memory)

illustrates with great eloquence the power and potential of Elul’s 29 days of deep intellectual, spiritual, and personal growth as we prepare to make the most out of the High Holy Days. In *Preparing Your Heart for the High Holy Days*, authors Rabbi Kerry Olitzky and Rabbi Rachel Sabath provide daily guided meditations and an easy way to stay attuned to each day in the month leading up to Rosh Hashanah.

Starting on the first Friday of Elul and continuing throughout the month, we will blow the shofar at each 6:00 pm Shabbat service — to call ourselves to the spiritual task of internal reckoning with God, with our relationships, and with our deepest selves. During this period, we will also pray from a special Elul Shabbat prayer book. Throughout the month of Elul, we are encouraged to study Torah, reach out to individual family and friends, nurture our relationships, meet with a rabbi (or two or three), and engage in social justice work that makes a true difference in the lives of others. Throughout the High Holy Days, books such as the two I mentioned can help us on our spiritual journeys. I also suggest that you peruse the pages of our new High Holy Day prayer book/machzor and even bring a journal to write in during services. It’s okay; you don’t always have to be on the same page as everyone else.



IT’S BACK TO SCHOOL TIME!

Our congregation is thrilled with the recent announcements of our new Director of Education, Lom Friedman, and Director of Early Childhood Education, Nika Greenberg. Lom comes to Emanu-El having served eight years as director of Camp Tawonga and six years as the Federation’s Jewish Teen Foundations director.

Nika has been in our preschool community for the last 3 years, serving as Early Childhood Program Manager before being promoted



Lom Friedman,
Director of Education

to interim director and finally being promoted to director this past May.

Sunday, September 16 marks the start of our religious school year for all preschool through 12th grade students, sandwiched between Rosh Hashanah and Yom Kippur; specific dates and times for each grade and program can be found on our website. You can register now (if you are a current member) by visiting your MyEmanu-El portal (<https://congregationmanuel.magentrix.com/>)

As a focus of our community, the Emanu-El religious school allows our students, of every age, to discover, to question, to take ownership of their own religious journey and find deep connections within our rich Jewish traditions and teachings.

Remember that religious school lasts through 12th grade graduation/Confirmation! Stay tuned for more information about our upcoming Teen Accelerator Program.

AUGUST

Friday, August 3

6:00 pm, Classic Shabbat Service
(Main Sanctuary)

Saturday, August 4

10:30 am, Shabbat Morning Service
(Martin Meyer Sanctuary)

Friday, August 10

6:00 pm, One Shabbat Service
(Martin Meyer Sanctuary)

Saturday, August 11

10:30 am, Shabbat Morning Service
(Martin Meyer Sanctuary)

Friday, August 17

6:00 pm, One Shabbat Service
(Martin Meyer Sanctuary)

Saturday, August 18

10:30 am, Shabbat Morning Service
(Martin Meyer Sanctuary)

Friday, August 24

6:00 pm, One Shabbat Service
(Martin Meyer Sanctuary)

Saturday, August 25

10:30 am, Shabbat Morning Service
(Main Sanctuary)

Friday, August 31

6:00 pm, One Shabbat Service
(Martin Meyer Sanctuary)

SPONSOR AN ONEG SHABBAT

Sponsoring an Oneg-Shabbat on Friday evening is a sweet way to honor or remember a loved one or to celebrate a *Simcha*. When you sponsor an Oneg-Shabbat, you help us welcome Shabbat with the warmth and community that are characteristic of our congregation. For more details, contact Svetlana Leykin at sleykin@emanuelsf.org or call (415) 751-2541 x123.

Thank you to the following for co-sponsoring recent Oneg-Shabbat receptions:

Beatrice Cohen, in honor of the Bar Mitzvah of grandson Shaia Saraf

Drs. Jonathan Fuchs and Larry Rand, in observance of the Yahrzeit of Gertrude Fuchs

Abby and Jason Porth, in honor of the Bar Mitzvah of Jonah Porth

Cherie Golant and Ron Gutierrez in honor of the Bat Mitzvah of Rose Galant Gutierrez

Patsy Lurie, in honor of the Bar Mitzvah of Jack Hsieh
Stephan and Karen Zuercher, in honor of the Bar Mitzvah of Tobia Zuercher

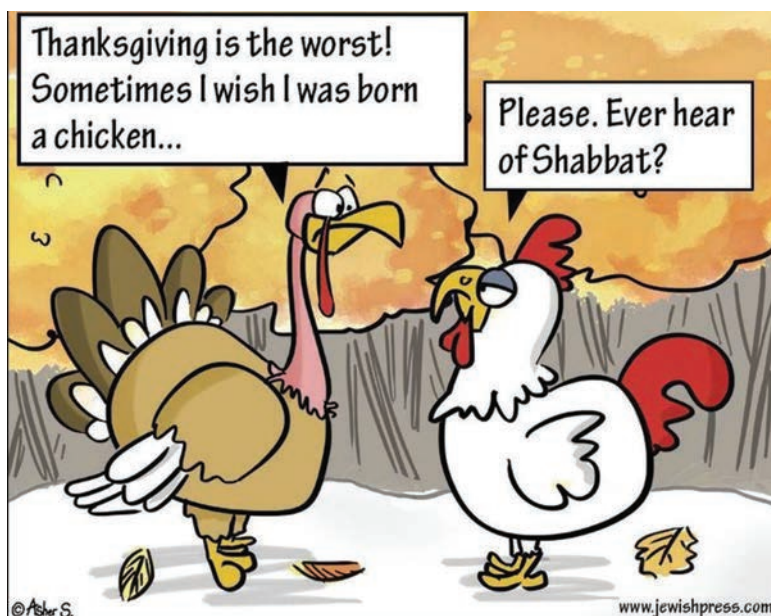
Stacey and Andy Scott, in honor of the Bar Mitzvah of Nathan Scott

Sandi Bragar and Jerome Rossen, in honor of the Bar Mitzvah of Benjamin Rossen

Shabbir and Sarah Imber Safdar, in honor of the Bar Mitzvah of Moishe Ben Imber Safdar

Maddie and Larry Lesnick, in honor of the baby naming of Ariana Astrid Rose Roach

Joshua and Elizabeth Marx, in honor of the baby naming of Judah Jeremy Marx



FALL 2018

Pre-registration is required for all of our featured Adult Education courses. To learn more, visit www.emanuelf.org/learning/adult-education or contact Ariana Estoque, Director of Adolescent and Adult Education, at (415) 751-2541 x307 or aestoque@emanuelf.org.

Tauber Anshei Mitzvah (Adult B'nei Mitzvah) Program

Sunday mornings
(starting Sunday, October 14 and running through Spring 2020), Temple Emanu-El, 4th Floor Library

Cost: \$360 (members only)

Congregation Emanu-El is thrilled to offer the Tauber Anshei Mitzvah, our adult bar/bat mitzvah training program. This 18-month program will conclude with a meaningful group b'nei mitzvah service. Content will include practical Torah/Haftarah chanting skills, as well as continued academic study and enrichment with our cantors and rabbis.

Students are not required to know the Alef-Bet before entering the class, although it would be helpful. Cantors Attie and Luck will help you learn as you go. We can also recommend fantastic Hebrew tutors should you wish to speed up the process.



Hebrew: Decoding the Alef-Bet with Cantor Marsha Attie

**Sundays, September 16
and 23, 9:30 – 11:15 am**

**Cost: \$18 for members,
\$36 for nonmembers**

This crash course is designed for those who want to learn how to read Hebrew as well as those

who just need a refresher. Course participants MUST attend both sessions. A light nosh will be provided. This is great preparation for the Tauber Anshei Mitzvah program as well.

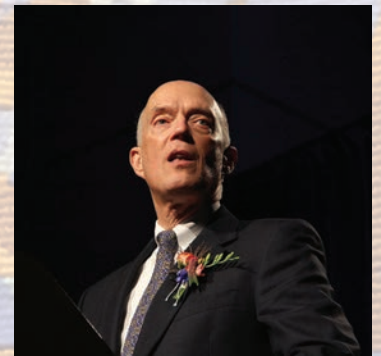
There is a Poet in Everyone—Even You: The Cento Patchwork Poetry Workshop

Taught by Rabbi Stephen S. Pearce

**Tuesday evenings, October 16, 23, 30 and November 6, 13,
7:00 – 9:00 pm**

Cost: \$36 for members, \$54 for nonmembers

Rabbi Stephen S. Pearce, Taube Emanu-El Scholar, will teach a workshop for the poet in everyone, even the unknown poets among us. That statement might seem odd, but each of us IS a poet, even if we've never written a poem, never understood poetry, or always found poetry intimidating. Rabbi Pearce's poetry workshop will introduce inexperienced, novice, and skilled writers alike to the type of poetry that virtually writes itself — often called found, verbatim, or appropriated poetry.



This traditional literary device known as a Cento, which dates back to the 3rd or 4th century, creates the new meaning from previously written texts! Words, phrases, and sometimes entire passages are taken from other sources and then reframed into a new poem. Think of it as the literary equivalent of a collage. By recycling previously written verses, text is given a new context, pretext, and meaning.

Try your hand at writing a Cento or just enjoy the creations of the other workshop participants. Some of these poems will appear in the Temple Chronicle at a later date. Please bring a favorite (short) poem to share with participants!

continued on page 6

FALL 2018

Jewish Poets of Broadway: A Tribute to Musical Theatre's Most Gifted Lyricists

Taught by Musical Theatre Maven Bonnie Weiss

**Tuesday evenings, October 16, 23, 30,
and November 6, 13, 7:00 – 9:00 pm**

Cost: \$36 for members, \$54 for nonmembers



We will explore the rich thought, feeling, wit, and whimsy of some of musical theatre's most acclaimed and under-appreciated word wizards. And we'll learn why over 70% of these lyricists were Jews!

In this course, we'll focus on six verbal virtuosos: Lorenz Hart, Ira Gershwin, Yip Harburg, Dorothy Fields, Sheldon Harnick, and Oscar Hammerstein. We'll also look at how these artists expressed

their experiences and concerns about the Jewish experience in America through their work.

Cheshvan Yoga: Yoga for Rest

**Fridays Noon - 1:15 pm
Oct 19, 26; Nov 2, 9, 16**

Members \$36; Nonmembers \$54

Prepare for Shabbat on all levels of being in this Friday lunchtime weekly series during the month of Cheshvan, the Hebrew month of rest! Integrate mind, body, heart, and spirit and cultivate the quality of rest (*menuchah*) in a gentle yoga and movement practice rooted in Jewish mystical teachings about Shabbat.

This course will be taught by Julie Emden, founder and director of Embodied Jewish Learning.



Pre-registration is required for all of our featured Adult Education courses. To learn more, visit www.emanuelsf.org/learning/adult-education or contact Ariana Estoque, Director of Adolescent and Adult Education, at (415) 751-2541 x307 or aestoque@emanuelsf.org.

How to Read the Bible: Bridging the Gap between Ourselves and Our Inherited Texts

Taught by Lehrhaus Judaica's new Executive Director, Rabbi Jeremy Morrison

**Tuesday evenings, October 16, 23, 30, and November 6,
7:00 – 9:00 pm**

For many readers today, the Bible often feels impenetrable and outdated, principally because of the manner in which Jewish texts have been taught in religious schools for generations. This course will explore methods of reading sacred texts that are central to liberal Judaism's orientation but not frequently utilized in a synagogue setting. We will discuss myth and metaphor and the Bible's literary history to uncover the ancient meanings of several of the Bible's classic narratives, as well as its laws and codes, and we will explore their relevance to contemporary Jews and the world in which we live.



Raising a Jewish Child – A Scaffolding for Independence and Responsibility with Rabbi Stephen Pearce

**Sunday mornings, Beit Midrash
October 7, 14, 21, 28, 9:30 – 11:15 am**

FREE, drop-ins welcome

Utilizing both rabbinic education and a doctorate in psychology, Taube Emanu-El Scholar Rabbi Pearce will engage parents by drawing on Jewish wisdom and psychological insights to guide them in raising their children.

This four-week course will focus on mitzvot, the Jewish action standards of *kehilah*—community; *sh'lom bayit* domestic tranquility that nurtures a peaceful home; *hach'nasat orchim*—hospitality to strangers; *tzedakah*—righteous giving; *Talmud Torah*—Jewish learning; *bikur holim*—visiting the sick; *g'milut hasidim*—acts of kindness; *neemanut*—faithfulness; *chesed*—benevolent goodness; *tikkun olam*—perfecting a broken world; and *teshuvah*—forgiveness. In addition, classes will also focus on discussing God, prayer, self-esteem, coping skills, dealing with disappointment, encouraging independence as well as over and under parenting.

ברכים הבאים
שנה טובה תשע"ד

**CONGREGATION EMANU-EL
WELCOMES YOU TO**

HIGH HOLY DAYS
2018 - 5779

WELCOME



- FIND MEANING
 - EXPERIENCE RENEWAL
 - BUILD JEWISH COMMUNITY
- SHANAH TOVA

www.emanuelsf.org/hhd

5779 - 2018/19

EMANU-EL SF

HIGH HOLY DAYS

Soon shofars will be sounding in our sanctuaries, on Baker Beach and in the courtyard as we hear the call to welcome in a new year of hope, of meaning, of rebalance and renewal.

On these pages you will find gateways to connect to these powerful and sacred days of awe.

Bring your loved ones and friends and come to join in the diverse, engaging services and spiritual opportunities Emanu-El offers as we all heed that ancient and ever relevant call to hope and renewal.

Shanah Tovah U'Metuka



CLASSIC SERVICE:

Cantor Luck leads a majestic musical ensemble including strings, clarinet, choir, and keyboards, creating a deeply emotional, uplifting and contemplative experience.

CONTEMPORARY SERVICE:

Cantor Attie and her musicians lead soulful, spirited, participatory, warm and prayerful services.

ROSH HASHANAH

EREV ROSH HASHANAH

SUNDAY, SEPTEMBER 9

5:00 pm - Family Service, Martin Meyer Sanctuary

One hour worship, led in a participatory, educational style by our clergy and musicians. Appropriate for children under age 5 and open to the community.

NO ONE PASS OR TICKET REQUIRED

6:00 pm - Classic Service, Main Sanctuary

Led by Rabbis Carla Fenves and Jason Rodich.
Sermon by Senior Rabbi Beth Singer.
Music: Cantor Arik Luck, the Emanu-El Choir and organist.

8:30 pm - Contemporary Service, Main Sanctuary

Led by Senior Rabbi Jonathan Singer and Rabbi Ryan Bauer.
Sermon by Senior Rabbi Beth Singer.
Music: Cantor Marsha Attie and accompanists.

ROSH HASHANAH DAY

MONDAY, SEPTEMBER 10

9:00 am - Classic Service, Main Sanctuary

Led by Senior Rabbi Jonathan Singer and Rabbi Sydney Mintz.
Sermon by Rabbi Ryan Bauer.
Music: Cantor Arik Luck, the Emanu-El Choir and organist.

10:00 am - Service for families with children ages 5 and under, Martin Meyer Sanctuary

Led by clergy.
Music: Cantor Marsha Attie and accompanists.

NO ONE PASS OR TICKET REQUIRED

11:45 am - Contemporary Service, Main Sanctuary

Led by Senior Rabbi Beth Singer and Rabbi Carla Fenves.
Sermon by Rabbi Jason Rodich.
Music: Cantor Marsha Attie and accompanists.

2:30 pm - Service for families with children ages 5-10, Main Sanctuary

Led by Emanu-El clergy.
Music: Cantor Arik Luck and musician Jonathan Ferris.

NO ONE PASS OR TICKET REQUIRED

3:30 pm - Community Service led by our Teens, Main Sanctuary

Come and be inspired by the music, communal singing, and commentaries created and led by our teens.

With Cantor Marsha Attie and accompanist.

NO ONE PASS OR TICKET REQUIRED

TASHLICH

5:00 pm - Baker Beach

As instructed by the Prophet Micah, we gather to throw breadcrumbs into the water on Rosh Hashanah afternoon. This ceremony is called Tashlich and represents a symbolic casting away of the transgressions of the past year. Dress casually (and warmly), bring some breadcrumbs and join us for this meaningful ceremony of song and personal reflection. Led by Emanu-El clergy and musicians.

NO ONE PASS OR TICKET REQUIRED



2ND DAY ROSH HASHANAH

TUESDAY, SEPTEMBER 11

9:30 am, Reuben Rinder Chapel

A quiet, meditative, acoustic service led by Senior Rabbi Jonathan Singer and Rabbi Ryan Bauer.

NO ONE PASS OR TICKET REQUIRED

HIGH HOLY DAY SERVICES OPEN TO THE COMMUNITY

NO ONE PASS OR TICKET REQUIRED

ON EREV ROSH HASHANAH

Family Service 5:00 pm
Martin Meyer Sanctuary

ON ROSH HASHANAH

Family Service with
children ages 5 and under 10:00 am
Martin Meyer Sanctuary

Family Service with
children ages 5-10 2:30 pm
Main Sanctuary

Community Service led by our teens 3:30 pm
Main Sanctuary

Tashlich 5:00 pm
Baker Beach

ON KOL NIDRE

Family Service 5:00 pm
Martin Meyer Sanctuary

ON YOM KIPPUR

Family Service with
children ages 5 and under 10:00 am
Martin Meyer Sanctuary

Program on Homeless Youth 1:00 pm
Reuben Rinder Chapel

Reflection and Renewal
in the Redwoods 2:15 pm
Meet at front gate

Afternoon Service 2:30 pm
Martin Meyer Sanctuary

Community Service led by our teens 3:30 pm
Main Sanctuary

Guided Meditation 4:00 pm
Guild Hall. No latecomers admitted.

Healing Service 4:00 pm
Reuben Rinder Chapel

STUDY SESSIONS, TASTE OF TAUBER*

Yom Kippur 10:00 am and 11:30 am
Guild Hall

*A program of the Madeleine Haas Russell Institute of Jewish Learning

YOM KIPPUR

KOL NIDRE

TUESDAY, SEPTEMBER 18

5:00 pm - Family Service, Martin Meyer Sanctuary

One hour worship, led in a participatory, educational style by our clergy and musicians. Appropriate for children under age 5 and open to the community.

NO ONE PASS OR TICKET REQUIRED

6:00 pm - Classic Service, Main Sanctuary

Led by Senior Rabbi Beth Singer and Rabbi Carla Fenves. Sermon by Senior Rabbi Jonathan Singer. Music: Cantor Arik Luck, the Emanu-El Choir and organist.

8:30 pm - Contemporary Service, Main Sanctuary

Led by Rabbis Sydney Mintz and Jason Rodich. Sermon by Senior Rabbi Jonathan Singer. Music: Cantor Marsha Attie and accompanists.

YOM KIPPUR DAY - STAY THE DAY AND PRAY

WEDNESDAY, SEPTEMBER 19

9:00 am - Classic Service, Main Sanctuary

Led by Senior Rabbi Beth Singer. Sermon by Rabbi Ryan Bauer. Music: Cantor Arik Luck, the Emanu-El Choir and organist.

10:00 am - Service for families with children ages 5 and under
Martin Meyer Sanctuary

Led by clergy. Music: Cantor Marsha Attie and accompanists.

NO ONE PASS OR TICKET REQUIRED

10:00 am - Taste of Tauber* Study Session, Guild Hall

High Holy Day Learning with Rabbi Lawrence Kushner.

Malicious talk / I'shon ha-ra / לשון הרע Maimonides on the laws governing speech.

NO ONE PASS OR TICKET REQUIRED

11:30 am - Taste of Tauber* Study Session, Guild Hall

**High Holy Day Learning with Taube Emanu-El Scholar
Rabbi Stephen Pearce: What Is Your Story?**

Muriel Ruykeser advised, "The world is not made of atoms. It is made of stories." Accounts from our formative years, called "charter narratives" exert influence in such a way that they take on lives of their own. Charter narratives can elevate or use up our future because they most often shape who we are, even though often people do not realize how a formative episode is responsible for future character. This workshop will provide an opportunity to explore the power of charter narratives to help participants reach back in time to explore such significant episodes at this self-reflective time of the year.

NO ONE PASS OR TICKET REQUIRED

*Taste of Tauber is a program of the Madeleine Haas Russell Institute of Jewish Learning.

YOM KIPPUR DAY - STAY THE DAY AND PRAY, CONTINUED

WEDNESDAY, SEPTEMBER 19

11:45 am - Contemporary Service, Main Sanctuary

Led by Senior Rabbi Beth Singer and Rabbi Ryan Bauer.
Sermon by Rabbi Carla Fenves.
Music: Cantor Marsha Attie and accompanists.

NO ONE PASS OR TICKET REQUIRED FOR THE FOLLOWING SERVICES

1:00 pm Homeless Youth in San Francisco, Reuben Rinder Chapel

1300 young people in San Francisco, ages 12-24, will not have a safe place to sleep tonight. The Emanu-El Tzedek Council is committed to making a specific impact in San Francisco's efforts to support these young people in becoming independent, self-sufficient adults. Please join us for a special opportunity to hear directly from young people who have experienced homelessness in San Francisco, experts who will share important research and opportunities to directly participate in solutions, and Rabbi Rodich who will ground our learning in Jewish tradition connected to our Yom Kippur observance.

2:15 pm - Reflection & Renewal In the Redwoods: Prayer, Meditation and Music with Rabbi Sydney Mintz

Meet at front gate to walk to the Presidio

2:30 pm - Afternoon Service, Martin Meyer Sanctuary

Led by Senior Rabbi Jonathan Singer.
Music: Cantor Arik Luck.

3:30 pm - Community Service led by our teens, Main Sanctuary

Come and be inspired by the music, communal singing, and commentaries created and led by our teens. With Cantor Marsha Attie and accompanist.

4:00 pm - Meditation, Guild Hall

Led by Rabbi Ryan Bauer. No latecomers admitted.

4:00 pm - Healing Service, Reuben Rinder Chapel

Led by Senior Rabbi Beth Singer.



YIZKOR AND NEILAH CONCLUDING WORSHIP

A memorial service called Yizkor (Remembrance) is recited near the conclusion of Yom Kippur. It is said by every person who has lost a parent or other loved ones.

Neilah, the full name is **Ne'ilat She'arim** (Closing of the Gates) referring to the daily closing of the Temple gates in Jerusalem, follows Yizkor. On Yom Kippur, this literal closing is symbolically associated with the closing of the heavenly gates that remained open to prayer until sunset. If you wish to wait until the **Yizkor** service concludes, you may enter the sanctuary at the beginning of **Neilah**.

5:30 pm - Classic Yizkor and Neilah Services, Main Sanctuary

Led by Senior Rabbis Jonathan and Beth Singer.

Sermon by Rabbi Ryan Bauer.

Music: Cantor Arik Luck, the Emanu-El Choir and organist.

5:30 pm - Contemporary Yizkor and Neilah Services, Martin Meyer Sanctuary

Led by Rabbis Carla Fenves and Jason Rodich.

Sermon by Rabbi Sydney Mintz.

Music: Cantor Marsha Attie and accompanists.

Courtyard

Havdalah and Break the Fast following Neilah

SELICHOT

SATURDAY SEPTEMBER 1,
MARTIN MEYER SANCTUARY

PERFORMANCE: ARISE MY BELOVED AND GO FORTH - EMPOWERING PEOPLE TO DO GOOD IN THE WORLD.

About Jewish Women's Theatre

In the fall of 2008, Jewish Women's Theatre debuted in the backyard of a home in California with the expressed purpose of giving voice to Jewish women on stage. Until then, no theater company in America had pledged to welcome and encourage contemporary stories by Jewish women and to adapt them theatrically, giving them life in front of a live audience.

"We are a people of the book," we reasoned. "What if we focused on the word, the text, the story? What if we revived the age-old tradition of salons: women hosting culture of the day in their homes?" Sparing the expense of a theater, sets, costumes, and props meant we could fully focus on presenting powerful stories in unexpected and convenient venues, reaching many more local neighborhoods.

6:30 pm Oneg (Martin Meyer Reception) • 7:00 pm Performance (Main Sanctuary) • 8:15 pm Selichot Service (Main Sanctuary)

NO ONE PASS OR TICKET REQUIRED

PLEASE NOTE: ALL PASSES FOR HIGH HOLY DAY SERVICES ARE NON-TRANSFERABLE.

SUKKOT

SUNDAY, SEPTEMBER 23 - SUNDAY, SEPTEMBER 30

Celebrate Sukkot at the Temple with a festive outdoor service at 5:30 pm on Sunday, September 23 followed by dinner in the courtyard. Reservations are required for the dinner; please log in to the MyEmanu-El portal at the top right of our website to register. Please log in to the MyEmanu-El portal at the top right of our website to register.

Throughout Sukkot, bring a lunch or dinner, come sit in the sukkah and shake the lulav.

MONDAY, SEPTEMBER 24

Breakfast at 8:30 am

Sukkot service at 9:15 am

YIZKOR SERVICE

SUNDAY, SEPTEMBER 30

Breakfast at 8:30 am

Yizkor service at 9:15 am

SIMCHAT TORAH

SUNDAY, SEPTEMBER 30

6:00 pm, Guild Hall

Join us as we mark the conclusion of the annual cycle of public Torah readings, and the beginning of a new cycle!

This joyful and festive occasion includes a light dinner and dancing and singing with the Torah, and is a perfect celebration for the whole family. Please log in to the MyEmanu-El portal at the top right of our website to register so we know how much food to order.

ONE PASS

With your One Pass, you may attend any service. You will need to show your One Pass for all services except those that indicate "No One Pass or ticket required" or "Open to the Community." Students are welcome to come showing their school IDs; no passes needed.

Please note: All Passes for High Holy Day services are non-transferable.

SECURITY

For the protection of everyone, security personnel reserve the right to inspect all purses and packages and check identification. In the interest of time, please bring only what you will need during the service. Allow extra time to pass through the security lines.

QUESTIONS

**IF YOU HAVE ANY QUESTIONS
ABOUT THE HIGH HOLY DAYS,
PLEASE CONTACT OUR HIGH HOLY
DAYS OFFICE AT (415) 751-2541 X138
OR EMAIL HHD@EMANUELSF.ORG.**

PARKING CHANGES

Due to the steep decline in use, the Presidio parking and shuttle service to the Temple has been discontinued. For seniors and disabled members residing in San Francisco, we offer transportation for the 6:00 pm Classic Erev Rosh Hashanah service on Sunday, September 9, the 6:00 pm Classic Kol Nidre service on Tuesday, September 18 and the 5:30 pm Yizkor service on Wednesday, September 19, at a heavily subsidized price. Our transportation provider is SilverRide, a company that specializes in transportation for older adults.

Reservations for the subsidized SilverRide service can be made through the Temple, and the firm deadline is Friday, August 17. To reserve and pay, please log in to the MyEmanu-El portal at the top right of our website or contact Director of Membership Services Terry Kraus, membership@emanuelsf.org or (415) 750-7552. The cost is \$25 per person for each round trip.

If you would like to look for street parking around the Temple, we have obtained waivers of time limits and street cleaning for both sides of the following streets:

Lake from Arguello to 4th Ave.

2nd Ave., 3rd Ave. and 4th Ave. from Lake to California

Arguello from Jackson to California

Sacramento, Clay, Washington and Jackson from Arguello to Spruce

Cherry, Maple and Spruce from Jackson to Sacramento

CHILD CARE

Child care is offered during the morning services on both Rosh Hashanah and Yom Kippur, from 2:00 - 5:00 pm on Yom Kippur afternoon, and during Yizkor and Neilah. There is no evening child care. Child care is for children 2 - 10 years old. A form must be submitted in advance to enroll your child(ren) for child care. Please log in to the MyEmanu-El portal at the top right of our website to find the form.

If you choose to bring a young child to the Classic or Contemporary services, please be sure that your child is able to sit through the entire service (approximately two hours) so as not to disturb other worshippers. Otherwise, please register for child care when offered, or make other arrangements. A donation of \$10 per child is suggested for child care/per service.



continued on page 14

COMMUNITY ENGAGEMENT

DAYTIME PROGRAMS AT THE TEMPLE

Meet other congregants at these weekday opportunities at the temple! Questions? Contact Rebecca Reiner.

All Daytime Events listed are at Temple Emanu-El

Cooking for Congregants

Thursdays, August 2, 9, 23, 9:00 – 11:00 am, Kitchen

Do you enjoy working in the kitchen and helping others at the same time? Sign up for *Cooking for Congregants*, led by two Emanu-El members, where you will prepare meals for congregants facing a recent illness, death, or birth.

When someone we know is going through a challenging time, our natural reaction is to help, although we may not know exactly what to do. For those in need, food frequently becomes a low priority, so the support provided by Cooking for Congregants can make a huge difference! As volunteer Sari Swig says, "There is no better gift to yourself than to help others," while a recipient of meals expresses how "It is such a lovely gesture of community... I was most grateful."

Register now to fulfill this mitzvah! All menus, ingredients, and storage containers are provided. And if you know a congregant who would benefit from a few delivered meals, please let us know.

The Stories of Your Life: Guided Autobiography and Life Review Writing

No charge; any skill level welcomed.

August 13 and September 17, 10:00 am – Noon

Join this free and friendly group that meets monthly to share stories on assigned themes — for example, "Your Relationship with Israel," "Treasured Objects," or "Your Greatest Accomplishments." This is an opportunity for self-reflection and the chance to tell your unique story while also getting to know other members of our congregation. No writing experience is necessary! For more information, contact the group facilitator Nancy Alpert, LCSW at nalpo@igc.org.

Scrabble

No charge; drop in; all ages and experience levels welcomed.

Mondays, August 6, 13, 20, 11:00 am – 3:00 pm

Do you enjoy the challenge of putting letters together to form words? Join the Scrabble group and play a rousing game or two! Expand your vocabulary along with your social circle. Bring a Scrabble set (optional) and, of course, your appreciation of words.

Mah Jongg

No charge; drop in; all levels welcomed. **Rinder Chapel**

Tuesday afternoons, August 7, 21, 1:30 – 4:30 pm

Tuesday evenings, August 14, 28, 6:00 – 9:00 pm

These sessions are for play time only, no teaching. So if you're an experienced Mah Jongg player, come join us!

Bridge Club – Lessons and Game

Drop in; Cost: \$15 for members, \$20 for friends of members.

Tuesdays in September, 10:00 am – Noon

If you are beyond the level of beginner, join this very popular and lively group for duplicate-style bridge. Play while improving your game. No partner needed. Deborah Murphy is the instructor.

CONGREGANT GROUPS & GATHERINGS

Meet other congregants at these weekend and evening opportunities! Please register online. Questions? Contact Rachel Schonwetter.

MISHPACHA

Programs for families with children ages 0–5.

Got Shabbat?

**Saturday, August 25, 10:15 – 11:30 am,
Martin Meyer Sanctuary**

Families with young children (birth to 5 years old) are invited to join Mimi Greisman, Early Childhood and Family Educator, in celebrating Shabbat with family and friends. Activities will include a Torah parade, songs, musical instruments, fun toys, Shabbat stories, a puppet show, parachute, and bubbles! Plus a light nosh!

Baby Groups on Mondays and Fridays

Drop in with your little ones (birth to 2 years) and spend time with other parents. Join us as we prepare to welcome Shabbat on Fridays and celebrate Havdalah on Mondays. Enjoy music, stories, puppets, and more with Early Childhood Educator Mimi Greisman! Take advantage of a wonderful opportunity to connect with other parents and create lasting friendships.

Cost: No charge for members; \$10/session for nonmembers (first session free)



Mazel Tots!

**Mondays throughout the year, 9:30 – 11:00 am,
Martin Meyer Sanctuary**

Note: There will be no session on August 10.

Bagels and Babies

**Fridays throughout the year, 9:30 – 11:00 am,
Martin Meyer Sanctuary**

Note: There will be no session on August 6.

THE TRIBE FOR WOMEN

The Tribe for Women is for moms with children ages 0–18.

Sonoma Gathering

Saturday, August 18, 10:00 am – 10:00 pm

Please join us for a special Tribe for Women gathering at a congregant's home near Healdsburg (75 to 90 minutes from San Francisco) in Sonoma County for a day of relaxation, wine-tasting, and other fun activities! If you are interested in joining us, please contact Rachel Schonwetter at rschonwetter@emanuelf.org, and she will connect you with the host!

THE TRIBE FOR MEN

A group of active and committed Emanu-El dads ages 30–50 with children ages 0–12, regardless of gender and/or sexual identity.

The Tribe's Annual Summer Camping Trip

Friday, August 17 – Sunday, August 19, Bort Meadow at Anthony Chabot Regional Park, Oakland

Cost: \$136/family

Join the Tribe for Men's fourth annual camping trip!

Rabbi Bauer and Cantor Luck welcome you to our annual camping trip when Emanu-El kids (3+ recommended) and their dads enjoy nature and a weekend of fun camp activities. This summer our guitar playing, queso and s'more-making extravaganza will take place in the East Bay at the Bort Meadow campground in Anthony Chabot Regional Park. All meals are included in the cost per family. Information on what to pack and the weekend itinerary will be available after registration.

Stay tuned to future editions of the Chronicle for information on our:

- Women's Group (gatherings throughout the year for all adult women of Congregation Emanu-El)
- Interfaith Group (gatherings for Emanu-El Interfaith members and families)
- Men's Group (group for Emanu-El men focused on Torah Study and socializing)

As a large congregation, we recognize the importance of small group connection, so we create many opportunities for learning, socializing, and enjoying local culture together. These group gatherings generally occur in the evening hours or on weekends. Please refer to the Community or Social Justice pages on our website for more information and staff contact information. Remember to register online in the MyEmanu-El portal for all of these programs (unless otherwise noted below) so we know to expect you.

EMANU-EL IN THE NEIGHBORHOOD

Build Emanu-El in your community with neighborhood gatherings.

Do you love your local coffee shop or farmers market? And does bringing a little Emanu-El into your neighborhood appeal to you? If you're looking for a volunteer opportunity close to home, consider becoming a neighborhood liaison to reach out to congregants in need, coordinate neighborhood events, and welcome new congregants in the city. Or volunteer to host a local community get-together in your home. Interested? Let us know!

FRONT PORCH

This innovative program assembles congregants into groups and gives them the tools they need to build deep and meaningful relationships at home-hosted gatherings. The gatherings include short videos filmed by one of our rabbis and discussion questions on Jewish topics relevant to life today. Would you like to join a Front Porch group this fall? Fill out the interest form at <https://www.emanuelf.org/front-porch/>

TZEDEK COUNCIL

Meet your fellow congregants for these social justice opportunities! Questions? Contact Monica Pevzner.

What is the Tzedek Council?

The Congregation Emanu-El Tzedek Council was launched in August 2015 as a congregant-, board-, and clergy-run group, charged with the task of raising our participation and impact in the social justice arena.

HUMAN RIGHTS

UNITY GROUP

Congregation Emanu-El and First African Methodist Episcopal Zion Church sponsor an African-American/Jewish Unity Group that meets monthly.

Second Thursdays of the month, 6:00 – 7:30 pm
African American Art & Culture Complex,
762 Fulton Street, San Francisco

For the past two years, a group of Emanu-El congregants have met monthly with members of the Bay Area African-American community – for fellowship and to advance the cause of racial justice in the Bay Area and beyond. This year, the Unity Group will partner with other organizations to push for bail reform

continued on page 14

Your Community Engagement Team:

Terry Kraus (tkraus@emanuelf.org, x111)

Monica Pevzner (mpevzner@emanuelf.org, x124)

Frana Price (fprice@emanuelf.org, x100)

Rebecca Reiner (rreiner@emanuelf.org, x170)

Rachel Schonwetter (rschonwetter@emanuelf.org, x171)

VISITORS

You may include your friends or relatives who would like to attend in one of the following ways:

Please log in to the MyEmanu-El portal at the top right of our website to find the for to request tickets. Tickets are \$175 per seat per service or \$600 if you are requesting tickets for all five services (two evenings, two mornings and Yizkor). Please include a check or credit card authorization.

If your visitors belong to a Reform or Liberal congregation, please ask them to request tickets by having their synagogue send us a URJ Courtesy Request form. Your guests should ask their synagogue to indicate on the Courtesy Request form that they are attending with you.

We have a limited number of tickets available for visitors and they can only be purchased by members of the synagogue. It is important to emphasize that Congregation Emanu-El members are our first priority with respect to space at High Holy Day services.

TRAVEL

If you will be traveling within the United States and/or abroad during the High Holy Days, we can request courtesy seats for you at other Reform and Liberal congregations. Please log in to the MyEmanu-El portal at the top right of our website to request reciprocity by August 15.

HIGH HOLY DAY USHERS

Every year for the High Holy Day services, we need Temple ushers who extend a warm welcome, hand out prayer books, help congregants with seating, and answer general questions. Enrich your High Holy Day experience and help make the experiences of fellow members a positive and spiritual one. There are openings for every service. Please log in to the MyEmanu-El portal at the top right of our website to sign up. Requirement: You must arrive 45 minutes prior to the start of the service to be at your post and ready to greet when the doors open. For more information, please contact Terry Kraus, tkraus@emanuelsf.org or (415) 750-7552.

legislation in California. We believe that this legislation, if passed, will make an enormous difference in the lives of many poor people and people of color. We would love to have you join us in this effort. You are welcome to come to meetings simply to learn more about the topic, after which you can decide how involved you'd like to be.

Please contact Saundrah Anjali (sanjali@emanuelsf.org) for more information or to be added to our Unity Group mailing list.

NEW DAYTIME OFFERING:

Cheshvan Yoga: Yoga for Rest

Fridays Noon - 1:15 pm

Oct 19, 26; Nov 2, 9, 16

Members \$36; Nonmembers \$54

Prepare for Shabbat on all levels of being in this Friday lunchtime weekly series during the month of Cheshvan, the Hebrew month of rest! Integrate mind, body, heart, and spirit and cultivate the the quality of rest (menuchah) in a gentle yoga and movement practice rooted in Jewish mystical teachings about Shabbat.

This course will be taught by Julie Emden, founder and director of Embodied Jewish Learning.

Your child's religious school education does NOT end with the bnei mitzvah, in fact, it is truly just beginning.

We want YOUR TEEN to be an Emanu-El Fellow!

CALLING ALL 8TH – 12TH GRADE STUDENTS FOR OUR TEMPLE EMANU-EL FELLOWSHIP PROGRAM (TEF)

Sundays from 10:30 am – 12:00 pm, brunch included

TEF is a five-year program where our teens explore their Jewish identity, tradition, and history. They are challenged with contemporary ethical considerations through group study as well as service learning. Students reflect on their Jewish legacy in order to shape their future. The goal of TEF is to produce tomorrow's Jewish leaders: dedicated and well informed individuals, prepared to encounter a modern, diverse society through a Jewish ethical lens

Donate Online and save postage, paper, and time!

Don't let unexpected *simchas*, *mitzvahs*, and Life-Cycle events catch you off guard!

Donating online is a quick and easy way to honor friends and family while supporting the synagogue. Just go to our website (www.emanuelsf.org), select "Click to Donate," and follow the steps to make a credit card gift over a secure server. Be sure to include all dedication information and let us know if we should notify someone. You will receive an electronic confirmation, followed by an acknowledgment letter in the mail. That's all there is to it! If you need assistance, contact Talia Rothman in the Development Department at trothman@emanuelsf.org or (415) 750-7554.

YOUTH AND FAMILY EDUCATION

“Make for yourself a mentor, acquire for yourself a friend and judge every person as meritorious.” –Pirkei Avot 1:6

What is the purpose of the summer break from school? We used to think this vacation time originated from the need for child labor on family farms during the sunniest time of the year. But further research has revealed that summer break arose in response to the majority population shift that occurred in America in the 20th century – from rural areas to urban centers, where classrooms were too uncomfortably hot in summertime for both students and teachers. (Obviously, the research study did not include a visit to San Francisco during the summer!) Nowadays, everyone — including teachers, families, and students — recognizes the academic, social, and personal benefits of summer vacation. This doesn't mean that learning has to stop during the longest days of the year. Rather, summertime activities — summer camps (both overnight and day programs), family trips, and even less structured time — can all serve to stimulate our brains and spirits in different (yet important) ways. Unfortunately, parent schedules don't always adjust to school closures so easily! While kids are cheering “School's out for summer!,” parents are struggling to make sure they have each week's schedule covered, between play dates, carpools, day camps, and trips to see grandparents. But beyond these logistics, it is wise to slow down and appreciate what type of learning can happen over the summer.

Rabbi Arthur Lelyveld was the senior rabbi at my childhood synagogue (Fairmount Temple in Beachwood, Ohio), although he's more well known for having met with President Truman in the 1940s to move him to recognize the State of Israel, for his civil rights work in Mississippi in the 1960s



YOUTH AND FAMILY

registering black voters, and for serving as guest chaplain for the U.S. House of Representatives. As a Sunday school student and bar mitzvah, I was not aware of my rabbi's superstar credentials! But I always knew we could expect him to address the entire student body on the last day of school in a large Sunday program like Emanu-El's. Every year

he would send us off for the summer with “homework” as he instructed us to “read a new book, sing a new song, and make a new friend.” Our families took his words to heart! As the weeks of July and August swam by, my parents would check in on Rabbi Lelyveld's three assignments in a way that was both playful and encouraging. And Jewish summer camp was especially helpful in accomplishing the second and third assignments. In my first weeks here at Emanu-El, the building has been a little quieter than usual, but we are as busy as ever reflecting on the past year and building and brainstorming for the start of the next school year. With all of the creative programs

offered for every grade, I've had plenty to read! But if parents are looking for any recommendations, I suggest *The Blue Mountain* by Meir Shalev (a novel about early kibbutzniks in Israel) and *A Whole New Mind* by Daniel Pink. And if you're looking for a new song, I invite you to join us on Friday night! The music rising out of the Martin Meyer Sanctuary reminds me that Shabbat has begun; it pulls me away from the computer to start the weekend on the right foot. As for new friends, I'm having a wonderful time meeting everyone I can in this new home and community. On that note, please do not hesitate to knock on my door or send me an email at lfriedman@emanuelf.org.

Have a wonderful summer and we'll see you soon!

Lom Friedman
Director of Education

THANK YOU TO OUR DONORS

*The following gifts were received
from April 1 - June 30, 2018*

GENERAL FUND - used where the need is the greatest at the Temple

Mr. David Arrick	in memory of Sandra Belloff
Mr. Bill Black and Mrs. Lenore Naxon	in honor of Marco Attie's Bar Mitzvah
Mr. Harry Blumenthal and Ms. Murray Pitts	in memory of Eleanor Fraenkel
Ms. Lesley Bunim and Mr. Michael Jensen	
Mr. Michael Burwen and Mrs. Sherry Scherotter - Burwen	in observance of Charlotte Burwen's Yahrzeit
Cockayne Foundation	
Ms. Trudy Cohn	
Dr. and Mrs. Charles Cooper	
Mr. and Mrs. Vladimir Cuperman	in honor of Rabbi Ed Zerin's 98th birthday
Mrs. Maria Diamond	in memory of Guisa Levin and Natalio Fijtmans' Yahrzeit
Cantor and Mrs. Howard Drew	in observance of Louis Narvaez' Yahrzeit
Ms. Quetzal DuMont	
Mr. Renny Feldman and Ms. Gloria Wong	in observance of Violet Feldman's Yahrzeit
Ms. Regina Fishman	
Mr. Aaron Forkash and Shirin Djavaheeri	in appreciation of Under 5 Shabbat
Ms. Joanna Forster	in observance of Burton Rosen's Yahrzeit
Ms. Joanna Forster	in observance of Madeline Rosen's Yahrzeit
Ms. Mahdokht Frouzan	in observance of Dr. Hakimeh Moallem's Yahrzeit
Mr. Lawrence Goldberg	in observance of Doris Goldberg's Yahrzeit
Dr. and Mrs. Douglas Goldman	in memory of Frances Dinkelspiel Green
Mr. and Mrs. Norman Gordon	in observance of Ilia Gordon's Yahrzeit
Mr. and Mrs. Philip Graham	in observance of Samuel M. Roeder's Yahrzeit
Mr. and Mrs. Louis Haas	in observance of William J. Haas' Yahrzeit
Mrs. Mary Haas	in observance of Maria Anker's Yahrzeit
Dr. and Mrs. Joseph Hartog	in memory of Regina Hartog and Gabriel Hartog
Ms. Cathryn Hilliard	in observance of Eva Maria Sampson's Yahrzeit
Mr. and Mrs. Scott Kahn	in observance of Anita Kahn's Yahrzeit
Dr. Sally Kaufmann Cowan and Mr. Robert Cowan	in honor of Anita Barzman's Bat Mitzvah
Mr. and Mrs. Raymond Keeve	in observance of Yahrzeit
Kimberly Knowles and Mr. John Cowan	
Mr. and Mrs. Ronald Lackenbacher	in observance of Gertrud Koppl's Yahrzeit
Mr. George Landau	in observance of Dr. Majer Landau's Yahrzeit
Mr. and Mrs. James Lazarus	
Mr. and Mrs. Paul Levin	
Mrs. Brigitte Lewin	in observance of Henri Lewin's Yahrzeit
Ms. Jane Lurie	in honor of Rose E. Rosen's Yahrzeit
Dr. Howard and Ms. Siesel Maibach	in memory of Ellie Fraenkel and Alan Stein
Mr. and Mrs. Jerome Manning	in observance of Lillian Jacobs' Yahrzeit
Mr. and Mrs. Jerome Manning	in observance of Dorothy Manning and George Jacobs' Yahrzeit
Ms. Rachel Melman	in celebration of Ben Rossen's Bar Mitzvah
Ms. Marilyn Mercur	in honor of Cantor Barak
Mr. Craig Miller and Ms. Jacqueline Shelton-Miller	in memory of Franny Green
Roger Odenberg and Cathleen McCafferty	in memory of Eleanor Lesser Fraenkel
Ms. Ditka Reiner	in observance of Theresa Reiner's Yahrzeit

Mr. and Mrs. James Reuben	in memory of Bruce Lehmann
Ms. Roslyn Rhodes	in memory of Eleanor Fraenkel
Debra Rose	
Mr. Stephen and Ms. Marcia Ruben	in observance of Gershon Ruben's Yahrzeit
Mr. Benjamin Schalit	in observance of Albert L. Upton, Jr.'s Yahrzeit
Mr. Benjamin Schalit	in observance of Richard P. Inlander's Yahrzeit
Ms. Rachel Schonwetter and Dr. Cary Kraft	
Dr. German and Ms. Cynthia Shegalov	in observance of the Yahrzeit of Polina Torgovitskaya
Dr. and Mrs. Henry Shinefield	in observance of Maurice A. Shinefield's Yahrzeit
Ms. Joelle Steefel	in celebration of Susan Rothenberg's Anshei Mitzvah
Joann Terdiman	in observance of Allen M. Terdiman's Yahrzeit
Ms. Joan Titus	in observance of Samuel M. Roeder's Yahrzeit
Ms. Carol Vollen	in observance of David Brody, Michael Vollen, Sol Vollen, Ruth Vollen, Allen Vollen, and Alice Brody's Yahrzeits'
Dr. Raymond Weisberg	in appreciation to Clergy for Seder at SF Towers
Ms. Michele Woolfe-Avramov	in observance of Francine Woolfe's Yahrzeit

GENERAL FUND FOR TEMPLE FLOWERS

Mr. Jonathan Cherin and Ms. Catherine Pfister	in honor of Rose Golant Gutierrez' Bat Mitzvah
Ms. Nicole and Mr. Tom Hsieh	in honor of Jack Hsieh's Bar Mitzvah
Mrs. Joyce Lampert	in observance of Ernest Lampert's Yahrzeit
Mr. George Landau	in observance of Edda Landau's Yahrzeit
Mrs. Cindy Morris	in memory of Anne Liss Solomon
Mr. Jerome Rossen and Ms. Sandra Bragar	in honor of Benjamin Rossen's Bar Mitzvah
Ms. Beth Thurlow	in observance of Bruce Belshone's Yahrzeit
Paul and Jacob Zarefsky	in loving memory of Jacqueline Reed

CANTORS' MUSIC FUND - supports the Congregation's Music program and is used for charitable giving at the Cantors' discretion

Ms. Ruth Allen	in appreciation to Cantor Luck for Seder at SF Towers
Mr. David Arrick	in appreciation of Rabbi Beth Singer and Cantor Marsha Attie for guidance
Mr. and Mrs. Stuart Aronoff	in honor of the 90th birthdays of Cantor Martin Feldman and Nancy Feldman
Dr. Anita Josefa Barzman	in appreciation of Cantor Marsha Attie
Mrs. Inge Berliner	in appreciation to Cantor Luck for Seder at SF Towers
Dr. and Mrs. Leonard Brant	in observance of Bruno Brant's Yahrzeit
Dr. and Mrs. Leonard Brant	in observance of Miriam Brand and Pearl Rudin's Yahrzeits
Dr. and Mrs. Leonard Brant	in observance of Ruby Cage's Yahrzeit
Carol Ann Devincenzi	in appreciation to Cantor Luck for Seder at SF Towers
Mr. Joseph Ehrman III and Mrs. Diane Ehrman	in appreciation to Cantor Luck for Seder at SF Towers
Mr. and Mrs. Robert Futernick	in appreciation of Cantor Marsha Attie
Mr. and Mrs. Robert Futernick	in observance of Joshua Huffman's Yahrzeit
Sidney and Deanne Gottfried	in appreciation of Cantor Luck's Seder at San Francisco Towers
Lorraine Honig	in appreciation to Cantor Luck for Seder at SF Towers

Ms. Nicole and Mr. Tom Hsieh Dr. and Mrs. Jerome Jacobson	in honor of Jack Hsieh's Bar Mitzvah in appreciation to Cantor Luck for Seder at SF Towers
Adrienne Jonas	in appreciation to Cantor Luck for Seder at SF Towers
Mrs. Joyce Lampert	in appreciation to Cantor Luck for Seder at SF Towers
Joan Lenzner	in appreciation to Cantor Luck for Seder at SF Towers
Ms. Esther Lerner and Mr. Daniel Carrico	in observance of Morris Lerner's Yahrzeit
Ms. Linda Liebschutz and Mr. Joseph Taylor	in observance of David Liebschutz' Yahrzeit
Mrs. Joannie Liss	in appreciation of Cantor Luck and Rabbi Bauer
Elaine Lowenthal	in appreciation to Cantor Luck for Seder at SF Towers
Louise Marsh	in appreciation of Rabbi Pearce and Cantor Barak
Constance Marvin	in appreciation to Cantor Luck for Seder at SF Towers
Vera and Walter Obermeyer	in appreciation to Cantor Luck for Seder at SF Towers
Mr. and Mrs. Jason Porth Roberta and David Pressman	in honor of Jonah Porth's Bar Mitzvah in appreciation to Cantor Luck for Seder at SF Towers
Ruth Reznikoff	in appreciation to Cantor Luck for Seder at SF Towers
Robert Rosenfield	in appreciation to Cantor Luck for Seder at SF Towers
Mr. Jerome Rossen and Ms. Sandra Bragar	in honor of Benjamin Rossen's Bar Mitzvah
Mrs. Jeanne Sassoon	in appreciation to Cantor Luck for Seder at SF Towers
Mrs. Stacey and Mr. Anderson Scott	in honor of Nathan Scott's Bar Mitzvah
Mrs. Joan Solomon	in appreciation to Cantor Luck for Seder at SF Towers
William and Marilyn Sugar	in appreciation to Cantor Luck for Seder at SF Towers
Lita Swiryn	in appreciation to Cantor Luck for Seder at SF Towers
Mrs. Anne Tick Dr. Raymond Weisberg	in honor of Cantor Roslyn Barak in appreciation to Cantor Luck for Seder at SF Towers
Ava Weiss	in appreciation to Cantor Luck for Seder at SF Towers
Alfred Whitman	in appreciation to Cantor Luck for Seder at SF Towers
Dr. Eleanor Zuckerman	in appreciation to Cantor Luck for Seder at SF Towers
Mrs. Karen and Mr. Stephan Zuercher	in honor of Tobias Zuercher's Bar Mitzvah

CARING COMMUNITY FUND - supports our temple families by offering care and support to congregants in times of need

Dr. Sally Kaufmann Cowan and
Mr. Robert Cowan in honor of the Chaplain Program
at Emanu-El

EMANU-EL COMMUNITY SERVICE FUND - promotes and supports social action and community service programs

Mr. and Mrs. Charles Bleadon (3) Mrs. Adele Corvin Dr. and Mrs. Stuart Eisendrath	in memory of Frances Green in observance of Dr. Ervin Hansher's Yahrzeit
Mr. and Mrs. Robert Futernick Ms. Terry Kraus	in memory of Robert Schlactus in honor of Dr. Anita Barzman Anshei Mitzvah
Ms. Judi Leff and Mr. Kevin Brown Ms. Esther Lerner and Mr. Daniel Carrico	in memory of Ann Quadri in observance of Fela Rubinstein Lerner's Yahrzeit
Mrs. Meta Pasternak Mrs. Rita Semel	in observance of Henrietta Roher's Yahrzeit
Vivian Ullman	in appreciation of Terry Kraus

FOR THE ROOSEVELT FOOD PANTRY

Dr. Leslie Friedman and Mr. Jonathan Clark Mr. and Mrs. Harry Nebenzahl Mr. and Mrs. William Scott	in honor of Harriet Clark in observance of Sam Miller's Yahrzeit in honor of Bill Scott's birthday
---	--

EMANU-EL LIFE-CYCLE FUND - enables all congregants to celebrate significant milestones, regardless of economic circumstances

Mrs. Stella Daniels	in observance of Harry Daniels' Yahrzeit
Mr. David Goodstein	in observance of Betty Goodstein's Yahrzeit
Mr. David Goodstein	in appreciation of clergy and staff of Emanu-El; in memory of Aaron Goodstein and Olga Perkovic
Mr. Alan and Ms. Susie Greinetz Ms. Judith Kneeter and Rabbi Edward Zerin	in memory of Bruce Lehmann in honor of Anita Barzman's Bat Mitzvah
Mr. and Mrs. David Monasch Drs. Shelley and Michael Nagel	in memory of Anne Liss Solomon in honor of Rabbi Stephen Pearce; in honor of Cantor Roslyn Barak
Mr. Jerome Rossen and Ms. Sandra Bragar Mrs. Stacey and Mr. Anderson Scott	in honor of Benjamin Rossen's Bar Mitzvah
Ms. Linda and Mr. Jon Twichell	in honor of Nathan Scott's Bar Mitzvah in celebration of Eden Rivka Rosenthal's baby naming

EMANU-EL PRESCHOOL FUND - provides scholarships and other support for our Early Childhood Education program

Mr. Matthew and Ms. Anna Kovinsky
Ms. Caren Alpert

HAROLD DOBBS EARLY CHILDHOOD EDUCATION SCHOLARSHIP FUND - supports the Temple Emanu-El Preschool and early childhood programs

Ms. Marilyn Higuera in observance of Vera Lehrer's Yahrzeit

LUDWIG AND REBECCA ROSENSTEIN ADULT EDUCATION FUND - supports adult education

Mr. and Mrs. James Rogers in observance of Barbara S. Rogers'
Yahrzeit

ONEG SHABBAT AND KIDDUSH FUND - provides for the weekly Shabbat Oneg, Kiddush, and other congregational receptions

Ellen and Jon Benjamin Dr. and Mrs. John Esterkyn	in memory of Jacqueline Reed in observance of Nancy Steiner's Yahrzeit
Ms. Cherie Golant and Mr. Ron Gutierrez Mrs. Zeeva Kardos	in honor of Rose Galant Gutierrez's Bat Mitzvah
John Leipsic Maddie and Larry Lesnick	in observance of the Yahrzeit of Gary Kardos
Ms. Patricia Lurie	in honor of Dante Torrano's Bar Mitzvah in honor of Ariana Astrid Rose Roach's baby naming
Mr. and Mrs. Jason Porth Dr. Larry Rand and Dr. Jonathan Fuchs	in honor of the Bar Mitzvah of Jack Hsieh
Mr. Jerome Rossen and Ms. Sandra Bragar Ms. Sarah and Mr. Shabbir Imber Safdar	in honor of Ben Rossen's Bar Mitzvah in honor of Moishe Ben Imber Safdar's Bar Mitzvah
Mrs. Stacey and Mr. Anderson Scott Mrs. Ivria and Mr. Daniel Sisson	in honor of Nathan Scott's Bar Mitzvah in honor of Sabina Rey Sisson's baby naming
Mrs. Karen and Mr. Stephan Zuercher	in honor of Tobias Zuercher's Bar Mitzvah

continued on page 18

PAUL J. MATZGER YOUNG ADULT FUND - supports programs and leadership development for the Young Adult Community

Mrs. Lucia Matzger in observance of Claire Matzger Lilienthal's Yahrzeit

RABBI JOSEPH ASHER FUND - supports an annual lecture

Mrs. Eva Levi in observance of Max S. Levi's Yahrzeit

RABBIS' DISCRETIONARY FUND - used by clergy and senior staff for charitable giving

Dr. Anita Josefa Barzman MD in appreciation of Rabbi Jonathan Singer
 Mr. Mark Battat in observance of Erna Wertheim, Fanny and Ezra Battat, Peter Battat and Lotte Scheuer's Yahrzeits'
 Mrs. Joelle Benioff in memory of Frances Green
 Mr. and Mrs. Scott Burger in celebration of Simon Burger's Brit Milalh
 Mrs. Stella Daniels in observance of Alfred H. Daniels' Yahrzeit
 Cantor and Mrs. Howard Drew in observance of Jack Androwitz' Yahrzeit
 Ms. Ellen Fleishacker in honor of Rabbi Sydney Mintz
 Dr. Brenda Friedler in honor of Rabbi Stephen Pearce and Family
 Dr. Brenda Friedler in appreciation of Leroy Fernandez's recovery from illness
 Mr. and Mrs. Robert Futernick in observance of Rowan Josephine Acton-Futernick's Yahrzeit
 Ms. Nicole and Mr. Tom Hsieh in honor of Jack Hsieh's Bar Mitzvah
 Mr. Zev Hymowitz in observance of Anne Hymowitz' Yahrzeit
 Dr. Michael Kaiser and Mr. Larry Sanders in honor of Dr. Anita Barzman's Anshei Mitzvah
 Ms. Shulamit Kashy and Mr. Damon Schechter in honor of Shulamit Kashy and Damon Schechter's marriage
 Rabbi Jessica and Mr. Ross Kirschner in appreciation of Rabbi Jonathan Singer
 Mrs. Joannie Liss in appreciation of Cantor Attie and Rabbi Bauer
 Louise Marsh in appreciation of Rabbi Pearce and Cantor Barak
 in memory of Anne Liss Solomon
 Mrs. Cindy Morris in honor of Ben Rossen's Bar Mitavah
 Mr. Jerome Rossen and Ms. Sandra Bragar in honor of Jonah Porth's Bar Mitzvah
 Mr. and Mrs. Jason Porth in memory of Leona Salzman
 Laura and Mary Salzman in observance of Harry Sax's Yahrzeit;
 Mr. Richard Sax in memory of Jackie Sax
 in observance of Danny Sax's Yahrzeit;
 in memory of Jackie Sax
 Mrs. Stacey and Mr. Anderson Scott in honor of Nathan Scott's Bar Mitvah
 Milton and Gloria Siegel in memory of Ann Quandri
 Mrs. Ivria and Mr. Daniel Sisson in honor of Sabina Rey Sisson's baby naming
 Mr. and Mrs. R. James Slaughter in memory of Bruce Neal Lehmann
 Mr. Eric and Ms. Gayle Starr
 Mr. Albert Villa (3)

YOUTH EDUCATION FUND - supports special programming and materials for the Youth and Family Education program

Mr. and Mrs. Stuart Aronoff in memory of Maxine Cohen Sigel and Anne Liss Solomon
 Mr. and Mrs. Laurence Baer in appreciation of Ariana Estoque's guidance during Confirmation
 Mr. and Mrs. Harry Battat in observance of Thomas Battat's Yahrzeit
 in observance of Ezra Battat's Yahrzeit
 Mr. and Mrs. Harry Battat in memory of Barbara Heil
 Ms. Susan Cole and Mr. Alan Ovson in observance of Eitenne Wahlgren's Yahrzeit
 Ms. Susan Cole and Mr. Alan Ovson
 Mr. and Mrs. John Goldman in observance Usher Feldman's Yahrzeit
 Mr. and Mrs. Daniel Klionsky
 Mrs. Bonnie Magid

Dr. Morton Rivo in observance of Samuel S. Rivo's Yahrzeit
 Dr. Morton Rivo in observance of Isa Gold Rivo's Yahrzeit
 Mrs. Roslyn Payne in observance of Sophie Braeman's Yahrzeit
 Ms. Roni Silverberg in celebration of Ben Rossen and Dante Torranos' Bar Mitzvahs
 Ms. Roni Silverberg in celebration of Elle Endler's Bat Mitzvah
 Mrs. Joan Solomon in observance of Herschel Solomon's Yahrzeit
 Mrs. Roselyne Swig in honor of Jason Porth's Bar Mitzvah
 Wellner Dickey Family in observance of Henry Wellner's Yahrzeit

OTHER CONTRIBUTIONS

Mr. Lance Bayer In honor of 65th birthday sponsorship of May 4 Shabbat string quartet
 FJC for Reimagine
 Jewish Community Federation and Endowment Fund for Jewish Teen Education and Engagement Initiative
 and Jim Joseph Foundation
 Koret Foundation for Emanu-El Next

APPRECIATED STOCK GIFTS

Did you know that you can make charitable donations –including your Emanu-El membership dues and Impact Fund gifts – from your appreciated stock? Now is an excellent time to avoid capital gains taxes while generously supporting the congregation. You may also reduce your taxable estate by donating stock.

If you are making a stock gift, please use the following information:

First Republic Securities Co, LLC
Account Name: Congregation Emanu-El
For Further Credit to Account Number: 33L064574
Clearing Firm: Pershing LLC
 Pershing LLC DTC# 0443

Note: Please make the Development Office (trothman@emanuelsf.org or (415) 750-7554) aware of your stock gift before it is transferred so your donation can be tracked and appropriately directed as you wish.

Corporate Matching

Many Bay Area companies, including Yelp, Clorox, Google, and Salesforce, will match your gift dollar-for-dollar. Please contact your company's matching gifts coordinator to obtain a matching gift form and determine whether your gift to Congregation Emanu-El can be matched.

Thank you to the following companies for matching our member's donations:

- Apple • Clorox • Google • Black Rock
- Deloitte & Touche • Salesforce • Visa • Gap, Inc
- Pacific Gas & Electric Co.

Thank you to the following
for so generously supporting
the 2018 Impact Fund

SUSTAINERS

Anonymous
Mr. Stuart Corvin and Ms. Marissa Wertheimer
Mr. and Mrs. Donny Friend
The Lisa and Douglas Goldman Fund
Dr. and Mrs. Stephen Leavitt
Mr. Max and Ms. Nellie Levchin
Mr. and Mrs. Marvin Nathan
Mr. and Mrs. Mark Pincus

LEGACY

Mr. Steven Cohen
Ms. Jeanne Dinkelspiel
Mrs. Phyllis Friedman
Gaia Fund
Dr. Patricia and Dr. Richard Gibbs
Ralph and Marsha Guggenheim
Mr. and Mrs. Ron Kaufman
Ms. Susan Moldaw and Mr. Bob Stallings
Mrs. Eleanor Myers
Kenneth and Deborah Novack
Dr. and Mrs. Samuel Saks
Mr. and Mrs. John Siegel
Mr. Todd Sisitsky and Mrs. Holly Hagens
Mr. and Mrs. Benjamin Spero
The Zarrow Families Foundation

HERITAGE

Anonymous
Mrs. Valli Benesch and Mr. Robert Tandler
Dr. Natanya and Mr. Jason Brown
The Donald and Carole Chaiken Foundation
Mr. Conrad and Ms. Sandra Donner
Mr. William and Ms. Ellen Fleishhacker
Mr. Thomas Frankel
Mrs. Cynthia and Mr. Eliot Fried
Mr. and Mrs. Scott Kay
Mr. and Mrs. Mark Lehmann
Mrs. Phyllis Moldaw
Ms. Karen Pell and Ms. Heather Lupa
Mr. and Mrs. Richard Rosenberg
Mr. and Mrs. Adam Siegel
Ms. Marjorie Swig
Mr. and Mrs. Noah Wintroub
Mr. Richard Yanowitch

CORNERSTONE

Mr. and Mrs. Ron Abta
Ms. Rebecca Arons and Mr. Eric Fastiff
Mr. and Mrs. Laurence Baer
Mr. and Mrs. Mitchell Cohen
Mr. William Denebeim and Mr. Mark Vogel
Mrs. Jessica and Mr. Michael Eisler
Mr. H. Michael Feldman and Dr. Christine Glastonbury
Mr. Benjamin Friend and Ms. Jackie Frey
Mr. David Goldman and Ms. Angela Lin
The Goldstein Family Foundation
Mr. Alan and Ms. Susie Greinetz
Dr. Dennis Jaffe and Dr. Cynthia Scott
Mrs. Regan and Mr. Kevin Pluim
Dr. and Mrs. Martin Robinson
Mr. Jerome Rossen and Ms. Sandra Bragar
Ms. Chara Schreyer and Mr. Gordon Freund
Mr. Richard Segal and Mrs. Dorothy Connelly Segal
Mr. and Mrs. Gary Shapiro
Rabbi Jonathan Singer and Rabbi Beth Singer
Mr. Stephen and Ms. Susy Star
Mrs. Sarah Stein and Dr. Michael Cohn
Mr. Mark Sugarman
Mrs. Esta Swig
Mrs. Gunda Trepp

HATIKVA

Ms. Nancy Alpert
Dr. and Mrs. Barry Baron
Mr. Lance Bayer
Dale Boutiette and Alla Gershberg
Mr. Anthony Brenner and Susan Enders
Mr. Solomon Cera
Mr. and Mrs. Andrew Colvin
Mr. Evan Daar and Bailey Gerber
Mr. and Mrs. Steven Dinkelspiel
Peter L. Dwares Foundation
Mrs. Jessica and Mr. Stephen Galloway
Ms. Meredith Goldsmith
Mr. and Mrs. Louis Haas
Dr. Michael Kaiser and Mr. Larry Sanders
Mr. David Kremer and Ms. Marla Miller
Mrs. Lisa and Mr. Brian Krim
Ms. Carolyn and Mr. William Langelier
Mr. and Mrs. James Lazarus
Mr. Fred Levin and Ms. Nancy Livingston
Mr. Rich and Ms. Nancy Levine
Mr. Jesse M. Levy
Mrs. Meredith and Mr. Erez Levy
Mr. Martin Lipton and Ms. Robbin Mashbein
Dr. and Mrs. Lawrence Lusk
Ms. Rebecca and Mr. Goncalo Macieira-Kaufmann
Dr. Howard and Ms. Siesel Maibach
Ms. Dagny Maidman and Ms. Molly Wood
Mrs. Eve Masonek
Ms. Michelle Mercer and Mr. Bruce Golden
Dr. Raquel Newman
Dr. and Mrs. Mark Oscherwitz
Mr. and Mrs. Bradley Posner
Ms. Robin Reitzes
Mr. and Mrs. Alan Rothenberg
Mr. Gordon Rubenstein and Mrs. Krista Ramonas
Ms. Linda Rubinstein and Dr. Elliott Sherr
Mr. and Mrs. Ned Segal
Ms. Sue Siegel
Mr. Richard Singer
Mr. Eric and Ms. Gayle Starr
Ms. Joelle Steefel
Mr. and Mrs. Harold Stein
The Sternberg Charitable Foundation
Dr. Gary Stolzoff and Ms. Suzi Alexander
Mr. Ted Storey and Ms. Jaimie Sanford
Mr. and Mrs. David Weil
Dr. and Mrs. Lawrence Werboff
Mr. Peter Yolles and Dr. Jill Einstein
Mr. Paul Zarefsky

HONORED MENSCHEN

Anonymous
Ms. Kendal Agins
Ms. Tania and Mr. Laurence Albuquerk
Cantor Roslyn Barak and Mr. David Olick
Mrs. Shelley Bergman
Ms. Elyse Blatt
Mrs. Lynn Bunim
Mr. and Mrs. Richard Colsky
Estate of Benjamin Dorfman
Betty Dvorson
Mr. Craig and Ms. Sarah Epstein
Ms. Pamela and Mr. Paul Ginocchio
Mr. and Mrs. Norman Gordon
Mrs. Patsy Greenstein
Mr. Joshua and Miss Jenny Herbach
Mrs. Harriet Israel
Ms. Eileen Kahaner and Mr. Daniel Coleman

continued on page 22

AUGUST 2018 B'NEI MITZVAH

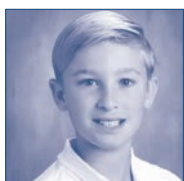
Tobias Zuercher

Bar Mitzvah: August 4
Martin Meyer Sanctuary
Parents: Karen & Stephen Zuercher
Torah Portion: *Ekev*



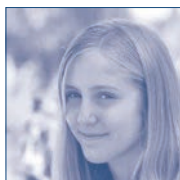
Isaac Rice

Bar Mitzvah: August 11
Martin Meyer Sanctuary
Parents: Ellen Nystrom & Erik Rice
Torah Portion: *Reeh*



Alessandra Breall

Bat Mitzvah: August 18
Martin Meyer Sanctuary
Parents: Joe & Rema Breall
Torah Portion: *Shoftim*



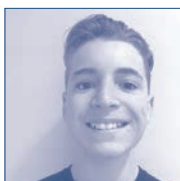
Tor Kushner

Bar Mitzvah: August 25
Main Sanctuary
Parents: Mark Kushner
& Mimi Winsberg
Torah Portion: *Ki Tetze*



Benjamin Their

Bar Mitzvah: August 25
Martin Meyer Sanctuary
Parent: Holli Their
Torah Portion: *Ki Tetze*



CELEBRATING A SHEHECHEYANU MOMENT?

Congregation Emanu-El is an ever-present partner in the transitional moments of our members' lives. Be it a baby naming or brit milah, a bar or bat mitzvah, a conversion or wedding ceremony, or a recovery from illness, Emanu-El clergy and staff strive to ensure that each sacred "Shehecheyanu Moment" is deeply fulfilling and personal. A donation to the Emanu-El Life-Cycle Fund is a beautiful way to mark a personal milestone, to honor friends or family celebrating a happy experience, or to show gratitude for the services provided by our clergy during these profound moments. Please donate online at www.emanuelf.org/donate-now/ or call the Development office at (415) 750-7554.

MAZEL TOV TO OUR MEMBERS WHO HAVE EXPERIENCED JOY

Kirsten Muetzel on the birth of her son, Noah Muetzel
Erica and Aaron Weisinger on the birth of their daughter, Ariana Weisinger
Barbara and David Moser on the marriage of their son, Jeremy Moser to Kelly Dodge
Mary deBree and Benjamin Kobren on the birth of their son, Ezekiel Winston Kobren
Jennifer and Andrew Rosenthal on the birth of their daughter, Eden Rivka Rosenthal
Michael Seider and Lauren Asarnow on the birth of their son, Oz Seider
Rachel and Scott Burger on the birth of their son, Simon Gabriel Burger
Susan Hirsch and Susan Leal on the birth of their granddaughter, Madeleine Mayer Young
Jackie and Adam Carmel on the birth of their son, Jacob Lawrence Carmel
Mollie Goodman and Andrew O'Brien on the birth of their son, Liam O'Brien

CONDOLENCES TO OUR MEMBERS WHO HAVE SUFFERED RECENT LOSSES

Bill Wells (Denise) on the death of his mother, and Cole and Alexa Wells on the death of their grandmother, Flo Wells
Stuart Sunshine (Lisbet) on the death of his father, and Matheus, Eric, and Olivia Sunshine on the death of their grandfather, Larry Sunshine
Scott Snow on the death of his wife, and Dylan and Samuel Snow on the death of their mother, Jill Snow
Friends and family of Leona Salzman
Cantor David Frommer (Rabbi Carla Fenves) on the death of his mother, and Aaron, Eliana and Talia Frommer on the death of their grandmother, Barbara Hymson Frommer
Ester Beerle (Ben) on the death of her father, and Eden and Eliana Beerle on the death of their grandfather, Yuri Shtivelman
Rick Sheinfeld (Minouche Kandel) on the death of his mother, and Maya and Izak Sheinfeld-Kandel on the death of their grandmother, Maida Lang Sheinfeld
Rabbi Carla Fenves (Cantor David Frommer) on the death of her grandmother, and Aaron, Eliana and Talia Frommer on the death of their great-grandmother, Hannah Galerstein
Rick Byrne (Stacy) on the death of his father, and Richard and Aidan Byrne on the death of their grandfather, Dick Byrne
Marc Steifman (Kira) on the death of his father, and Bennett and Carly Steifman on the death of their grandfather, Robert Irwin Parket

Pam Baer (Larry) on the death of her mother, and Joshua, Jonathan, Zachary, and Alana Baer on the death of their grandmother, Doreen Cody

Susan Rothenberg (Alan) on the death of her cousin, Jeremy Safran

Jill Sampson (Tom) on the death of her father, and Aaron and Joshua Sampson on the death of their grandfather, Max Horlick

Shabana Siegel (Charles) on the death of her mother, and Hannah and Leah Siegel on the death of their grandmother, Ann Quadri

Family and friends of Miriam Blumenfeld

Family and friends of Phyllis Spandorf

Laynie Tzena on the death of her mother, Gertrude Deutsch

Stephen Hegedus (Jennifer Kaufman) on the death of his mother, and Daniel Hegedus on the death of his grandmother, Veronica Ann Hegedus

Mark Lehmann (Kerri) on the death of his brother, and Bobby, Charlotte, and Kate Lehmann on the death of their uncle, Bruce Lehmann

Friends and family of Edgar Stone

Debra Charlesworth (Mark Nagel) on the death of her father, and Ariana, Joseph, and Leland Nagel on the death of their grandfather, Earl Thomas Charlesworth

Miriam Reiter (Eric) on the death of her father, Janet Haas on the death of her brother, and Deborah Haas-Izenberg and Jeff Haas on the death of their uncle, Rabbi Max Selinger

Mark Salkind (Miranda Heller) on the death of his mother, Peggy Rippe Salkind

David Goldstein (Julia Vetromile) on the death of his mother, Gloria Goldstein

John Kerner (Gwen) on the death of his brother, Robert Addison Kerner

Bonni Cohen (Jon Shenk) on the death of her mother, and Abraham and Anabel Shenk on the death of their grandmother, Joan Cohen

Jane Graham on the death of her husband, and Joan Titus on the death of her brother-in-law, Philip Graham

Jenna Satovsky on receiving The Frederick S. Nathan Judaica Award presented annually by Brandeis Hillel Day School to an 8th grade student.

Deborah Newbrun, Senior Jewish Educator and Director Emeritus at Camp Tawonga, on being named one of three exceptional Jewish educators in the United States to receive a 2018 Covenant Foundation Award.

Rachel Levin, a food and travel writer, contributing writer to San Francisco magazine, and restaurant critic for Eater.com, on the publication of her book *Look Big* about how to survive encounters with animals.

Tad Taube on being awarded an honorary doctorate degree by Jagiellonian University in Krakow, Poland, for being the founding benefactor of the POLIN Museum of the History of Polish Jews and the Jewish Heritage Initiative in Poland.

Maribelle and Stephen Leavitt, Phyllis Moldaw, and Roselyne Swig on being honored by the Contemporary Jewish Museum for their longtime support, at Illuminate, the museum's 10th anniversary celebration

Jonathan Fuchs, MD, on being promoted to full professor at the University of California, San Francisco.

NEW MEMBERS - Welcome!

Mirabel Richtel, Dr. Meredith Barad, Milo Richtel, Mr. Matthew Richtel • Dr. Abigail Brenner, Mr. Raymond Brenner • Ms. Alexi Dagan, Mr. Daniel Glovsky • Ms. Cynthia Friedman, Mr. Andrew Friedman • Mrs. Danielle Gazitt, Eliza Gazitt, Mr. Samuel Gazitt • Ms. Marjory Kaplan • Ms. Danielle Klebanov • Mr. Charles Lesem, Ms. Linda Lesem • John Lifland, Ms. Laura Lifland • Dr. Juliette Mandel Peters, Dr. Douglas Peters, Juniper Peters • Mrs. Robin Melnick, Benjamin Atwood, Mr. Jeremy Atwood, Eva Atwood • Mr. Noah Stephens, Ms. Ilana Merlis • Dr. Richard Parrish, Mrs. Minda Parrish, Mr. David Parrish • Lena Ryan, Mr. Angel Aragon, Michael Ceron, Ms. Sarah Ryan • Adam Scheer, Ms. Dana Scheer • Caleb Seider, Oz Seider, Dr. Michael Seider, Dr. Lauren Asarnow • Mr. David Wiesen, Mrs. Malina Wiesen

REJOINED MEMBERS - Welcome Back!

Alexandra Freedman, Ms. Jennifer Freedman, Mr. Jason Freedman, Ethan Freedman, Caroline Freedman • George Gould, Sage Gould, Mrs. Sara Jane Gould • Mr. Andre Mann • Mr. Travis Schachne, Ms. Lisa Parrish • Ms. Eva Sheridan • Mr. Ron Steckly • Naomi Wang, Mr. Winston Wang, Mrs. Molly Wang, Oliver Wang

CONGRATULATIONS TO OUR MEMBERS ON THEIR ACHIEVEMENTS

Mariko Kawaguchi on being honored as a recipient of a 2017 Director's Community Leadership Award for her outstanding work on the board of the FBI Citizens Academy Alumni Association and the Association of Former Intelligence Officers, and her counter-terrorism work with Bay area companies. Mariko converted to Judaism last year at Congregation Emanu-El in San Francisco, where she worked for several years as a security officer.

IMPACT FUND DONORS

2018 Impact Fund Supporters Continued

Ms. Terry Kraus
Mr. and Mrs. Robert Kroll
Mr. Glenn Lerner and Ms. Susanne Steinberg
Mrs. Yvonne Levy
Mr. Craig and Ms. Miriam Lipton
Mr. Claude Lowen
Mr. and Mrs. Alain Mayer
Mrs. Elizabeth and Mr. George Milstein
Mr. Bernard and Ms. Gail Nebenzahl
Mrs. Roslyn Payne
Mr. George and Dr. Edith Piness
Dr. Morton Rivo
Mr. Dale Rogers and Mrs. Lee-Lan Yip
Mr. and Mrs. Aric Rubin
Mrs. Kimberly and Mr. Dan Sanner
Dr. and Mrs. James Shapiro
Mrs. Joan Solomon
Mrs. Jill and Mr. Seth Steinberg
Mr. and Mrs. Donald Sweet
Mrs. Pearl Vapnek
Mrs. Marsha and Mr. David Veit
Mr. and Mrs. Murry Waldman

OTHER GIFTS

Anonymous (3)
Mrs. Mattie Alpert
Mr. and Mrs. Alex Buchler
Mr. and Mrs. Thomas Burns
Mrs. Eleanor Coffman
Mrs. Carole A. Cohen
Mr. and Mrs. Josh Cohen
Mrs. Pam Cowan and Mr. Daniel Winokur
Dr. Michael and Ms. Sharon Dans
Ms. Alison Datz and Mr. Joel Kamisher
Dr. and Mrs. Bernard DeHovitz
Mrs. Maria Diamond
Jason Dunham
Dr. and Mrs. Stuart Eisendrath
Ms. Ariana and Mr. Marc Estoque
Mr. and Mrs. Leland Faust
Ms. Marsha Felton
Rabbi Carla Fenves and Cantor David Frommer
Ms. Paula Freedman
Dr. Leslie Friedman and Mr. Jonathan Clark
Ms. Susan Friedman
Ms. Mahdokht Frouzan
Mrs. Nancy Fudem
Mr. and Mrs. Robert Futernick
Dr. Joseph Gabany and Ms. Dalene Bramer
Ms. Nancy Gabbay
Mr. Milton Galant
Mr. and Mrs. Sanford Garfinkel
Mr. Lawrence Goldberg
Ms. Barbara Goldman
Mr. and Mrs. Harold Goldman
Mr. Jonathan and Ms. Jena Goodman
Mr. and Mrs. Steven Gothelf
Mrs. Janet Haas
Mr. Bruce Hasson and Ms. Monica Banchero-Hasson
Dr. and Mrs. Paul Heim
Mrs. Eve Heyman
Ms. Marilyn Higuera
Mr. and Mrs. Fred Hoffman
Miss Susan Hootkins
Mr. Zev Hymowitz

Mr. and Mrs. Jerome Jacobs
Mrs. Susan Kaplan
Ms. Susan Karp
Ms. Leslie Karren
Mr. Marc Katz and Ms. Laura Gasser
Ms. Susan Kitchell
Mr. and Mrs. Daniel Klionsky
Mrs. Beatrice Kushner
Ms. Judi Leff and Mr. Kevin Brown
Mr. Ray Lent
Ms. Esther Lerner and Mr. Daniel Carrico
Dr. Patricia and Mr. Richard Levenberg
Mrs. Eva Levi
Mr. and Mrs. Asriel Levin
Ms. Julie and Mr. David Levine
Ms. Svetlana and Mr. Vladimir Leykin
Mrs. June Levy
Mr. and Mrs. Noel Lieberman
Mr. Christopher and Ms. Rebecca Lien
Mr. Seth and Ms. Sara Linden
Mrs. Sheila Lippman
Mr. and Mrs. Howard Lockshin
Mrs. Barbara Loftin
Mr. Peter Logan
Ms. Bonny Magid
Ms. Terry Magnin
Mr. and Mrs. Peter Maier
Mr. Lawrence Mansbach and Dr. Bette Caan
Ms. Sonia Melnikova-Raich and Mr. David Raich
Mrs. Amparo and Mr. Jason Mitchell
Mrs. Susan Molinari
Ms. Mavis Nathan
Ms. Sara Newman
Dr. Elizabeth Ozer and Mr. Cliff Staton
Mr. and Mrs. James Parkhill
Mrs. Judith and Mr. Gary Pasquinelli
Ms. Michelle Patterson and Mr. Michael Graham
Rabbi and Mrs. Stephen Pearce
Mr. and Mrs. Leonard Rosenberg
Ms. Andrea Rupprecht
Ms. Merle Ryan
Mrs. Jeanne Sassoon
Mr. Stephen Scheier and Ms. Heather Levy
Mr. and Mrs. Barry Schneider
Mr. and Mrs. Murray Schneider
Ms. Rachel Schonwetter and Dr. Cary Kraft
Mr. Frederick Schwarcz and Mrs. Priscille Schwarcz-Besson
Mr. and Mrs. William Scott
Mr. and Mrs. Edward Segal
Dr. German and Ms. Cynthia Shegalov
Mr. Mark Shostak and Dr. Emily Von Scheven
Mr. and Mrs. Paul Shwartz
Prof. Melanie Sperling
Nancy and Chuck Stanton
Mr. and Mrs. Timur Steiner
Mrs. Sylvia Storey
Ms. Katherine and Mr. Justin Taplin
Mrs. Anne Tick
Mrs. Joanne Tick
Ms. Joan Titus
Ms. Maria Urman
Ms. Carol Vollen
Beth and Alan Weiss
Dr. Steven and Dr. Emma White
Ms. Susan Wolin and Mr. Ralph Protsik
Michele Woolfe-Avramov

YOU SPOKE, WE LISTENED:

UPDATE ON THE URJ CONGREGATIONAL BENCHMARKING AND ASSESSMENT PROJECT



UNION *for*
REFORM
JUDAISM

האיחוד ליהדות רפורמית
SERVING REFORM CONGREGATIONS IN NORTH AMERICA

We know that Emanu-El operates best when our members help steer our direction, which is why we sent out a request for feedback in February; we wanted to hear from you! At the beginning of this year we embarked on a new project with the Union for Reform Judaism to implement a “congregational benchmarking and assessment project giving congregations the opportunity to take an inward look in a way that is consistent with other congregations, provides a basis for comparison with congregations of similar demographics, and empowers them to act upon the data.” We collected responses earlier this year from over 500 Emanu-El congregant households, and we’re now comparing them to the responses from 100 other congregations across the country that also participated in this project.

As we continue to analyze the results, here are a few intriguing data points:

Where we excelled:

- When looking at all 100 congregations, we ranked in the top decile for the question: “What is your perception of the quality and strength of our synagogue’s programs compared to those offered by other local synagogues, JCCs, or other Jewish organizations?” In addition, 75% of our survey respondents feel that our program offerings are stronger (or much stronger) than those of other local synagogues, JCCs, or other Jewish organizations.

Where we are on target:

- The responses show that we are effective in helping congregants develop a deeper sense of belonging to a community and feel part of something larger than themselves. When comparing our data to others, we ranked higher than other large (1,000+ member) urban congregations in the west (excluding Los Angeles) and on par with the overall average. When compared to other large synagogues, our congregants are more likely to recommend Emanu-El to their peers.
- Over 63% of respondents agreed (or strongly agreed) that our synagogue has supported or inspired members to be more involved in the area of social justice.

How else can we grow?

- Your responses illuminated two areas for improvement: making sure that our congregants feel they can influence decisions made by the synagogue, and becoming more transparent with our finances.

Thank you to all who took the time to fill out this survey. We will continue to learn from the quantitative data and open-ended responses. Please keep an eye out for how we plan to utilize this information to improve your experience at Congregation Emanu-El in the coming months.



Congregation Emanu-El
Two Lake Street
San Francisco, CA 94118
www.emanuelsf.org

PERIODICAL

We are a vibrant, sacred Jewish community that is dedicated to advancing our members' lifelong involvement in Judaism through worship, learning, good deeds, and congregant to congregant connections.

Beth Singer,
Richard and Rhoda Goldman Senior Rabbi
Jonathan Singer,
Richard and Rhoda Goldman Senior Rabbi
Sydney B. Mintz, Rabbi
Ryan Bauer, Rabbi
Carla Fenves, Rabbi
Jason Rodich, Rabbi
Marsha Attie, Cantor
Arik Luck, Ben and A. Jess Shenson Cantor
Roslyn Barak, Senior Cantor Emerita
Stephen Pearce, PhD, Sr. Taube Emanu-El
Scholar and Rabbi Emeritus
Rabbi Lawrence Kushner, Emanu-El Scholar
David N. Goldman, Executive Director
and General Counsel
Terry Kraus, FTA, Director of
Membership Services
Elena Gary, Chief Financial Officer
Ariana Estoque, M.Ed, Director of
Adolescent and Adult Education
Flora Kupferman, Interim Director of
Youth Education
Svetlana Leykin,
Director of Facilities and Special Events
Penny Mika, Director of Operations
and Office Administration
Julie Weinberg, Director of Development
Lani Zinn, Senior Director of Development
Byron Gordon, ChronicleSF Manager

Members of the Board of Directors

President, Donny Friend
Vice President, Mark Lehmann
Vice President, Paul Zarefsky
Treasurer, Sasha Kovriga
Secretary, Erika Coplon

Dale Boutiette	Rachel Melman
Sandi Bragar	Abby Porth
Steve Cohen	Paula Pretlow
Barrett Cohn	Joel Roos
Stuart Corvin	Jackie Safier
Jill Einstein	Rita Semel
Lara Ettenson	Jim Shapiro
Ellen Fleishhacker	Hilary Zarrow
Alan Greinetz	

The Temple Chronicle (USPS 023-317) is published monthly except June and July for \$36 per year by The Congregation Emanu-El, Two Lake Street, San Francisco, CA 94118. Periodicals Postage Paid at San Francisco, CA, and at additional mailing offices

POSTMASTER: Send address changes to The Temple Chronicle at Congregation Emanu-El, Two Lake Street, San Francisco, CA 94118.

ELUL PRAYER BOOK

Throughout the month of Elul (starting August 10 and running through September 7) — in preparation for the High Holy Days — our weekly Friday night services will be conducted with this special prayer book!

