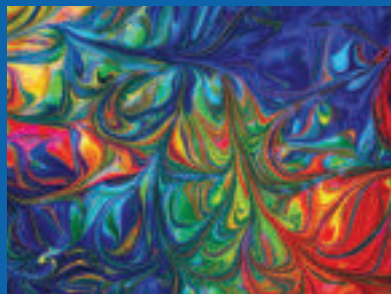


# Emanu-El <sup>S</sup><sub>F</sub>

CHRONICLE VOLUME CLXVI, NO. 18 | MAY, JUNE, JULY 2019 | NISSAN - TAMUZ 5779

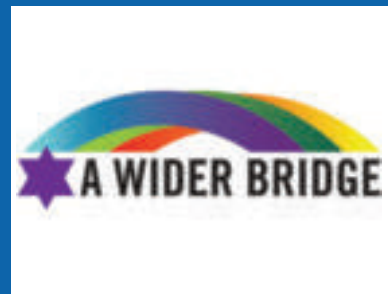
## HAVURAH REUBEN CONFIRMATION CLASS 5779/2019



MAY  
**22** 2ND ANNUAL  
Annual Lag  
Ba'Omer



JUNE  
**2** KOOLULAM



JUNE  
**28** Pride  
SHABBAT

# Shabbat Calendar

## MAY

### Friday, May 3

5:30 pm, First Friday Under Five Shabbat Service

(*Martin Meyer Sanctuary*)

6:00 pm, Classic Shabbat Service

– honoring Rabbi Lawrence Kushner (*Main Sanctuary*)

### Saturday, May 4

10:30 am, Shabbat Morning Service (*Main Sanctuary*)

10:30 am, Shabbat Morning Service (*Main Sanctuary*)

### Friday, May 10

6:00 pm, One Shabbat Service (*Martin Meyer Sanctuary*)

8:30 pm, Young Adult Late Shabbat Service (*Martin Meyer Sanctuary*)

### Saturday, May 11

10:30 am, Shabbat Morning Service (*Main Sanctuary*)

10:30 am, Shabbat Morning Service (*Martin Meyer Sanctuary*)

### Friday, May 17

6:00 pm, One Shabbat Service – Confirmation (*Martin Meyer Sanctuary*)

### Saturday, May 18

10:30 am, Shabbat Morning Service (*Main Sanctuary*)

10:30 am, Shabbat Morning Service (*Martin Meyer Sanctuary*)

### Friday, May 24

6:00 pm, One Shabbat Service (*Martin Meyer Sanctuary*)

### Saturday, May 25

10:30 am, Shabbat Morning Service (*Martin Meyer Sanctuary*)

10:30 am, Shabbat Morning Service (*Main Sanctuary*)

### Friday, May 31

6:00 pm, One Shabbat Service (*Martin Meyer Sanctuary*)

## JUNE

### Saturday, June 1

10:30 am, Shabbat Morning Service (*Martin Meyer Sanctuary*)

### Friday, June 7

5:30 pm, First Friday Under Five Shabbat Service (*Martin Meyer Sanctuary*)

6:00 pm, Classic Shabbat Service (*Main Sanctuary*)

### Saturday, June 8

10:30 am, Shabbat Morning Service (*Main Sanctuary*)

10:30 am, Shabbat Morning Service (*Martin Meyer Sanctuary*)

### Friday, June 14

6:00 pm, One Shabbat Service (*Martin Meyer Sanctuary*)

8:30 pm, Young Adult Late Shabbat Service (*Martin Meyer Sanctuary*)

### Saturday, June 15

10:30 am, Shabbat Morning Service (*Main Sanctuary*)

10:30 am, Shabbat Morning Service (*Martin Meyer Sanctuary*)

### Friday, June 21

6:00 pm, One Shabbat Service – honoring Terry Kraus (*Martin Meyer Sanctuary*)

### Saturday, June 22

10:30 am, Shabbat Morning Service (*Martin Meyer Sanctuary*)

10:30 am, Shabbat Morning Service (*Main Sanctuary*)

### Friday, June 28

6:00 pm, Pride Shabbat – with guest speaker Tyler Gregory, Executive Director of A Wider Bridge (*Martin Meyer Sanctuary*)

### Saturday, June 29

10:30 am, Shabbat Morning Service (*Chapel*)

## JULY

### Friday, July 5

5:30 pm, First Friday Under Five Shabbat Service

(*Martin Meyer Sanctuary*)

6:00 pm, Classic Shabbat Service (*Main Sanctuary*)

FEATURING RABBI STEPHEN PEARCE AND CANTOR ROSLYN BARAK

### Saturday, July 6

10:30 am, Shabbat Morning Service (*Chapel*)

### Friday, July 12

6:00 pm, One Shabbat Service (*Martin Meyer Sanctuary*)

8:30 pm, Young Adult Late Shabbat Service (*Martin Meyer Sanctuary*)

### Saturday, July 13

10:30 am, Shabbat Morning Service (*Chapel*)

### Friday, July 19

6:00 pm, One Shabbat Service (*Martin Meyer Sanctuary*)

### Saturday, July 20

10:30 am, Shabbat Morning Service (*Chapel*)

### Friday, July 26

6:00 pm, One Shabbat Service (*Martin Meyer Sanctuary*)

### Saturday, July 27

10:30 am, Shabbat Morning Service (*Chapel*)

Join us Shabbat mornings in July for minyan services. This month, when there are no B'nei Mitzvah our clergy will be able to teach, lead meditation and engage you in prayer and Torah discussions that will open the service up to learners and experienced daveners alike.

What a great way to embrace spirituality in the summer!

Join us from  
10:30 am - 12:00 pm

## Sponsor an Oneg Shabbat

Sponsoring an Oneg-Shabbat for Friday evening is a lovely way to honor or remember a loved one or to celebrate a Simcha. When you sponsor an Oneg-Shabbat, you help us welcome Shabbat with the warmth and community that are characteristic of our congregation. For more details, please contact Svetlana Leykin at [sleykin@emanuelsf.org](mailto:sleykin@emanuelsf.org) or (415) 751-2541 x123.



# SHALOM RAV FROM OUR RABBI

By Richard and Rhoda Goldman Senior Rabbi Beth Singer

**AH... MAY! MY FAVORITE OF ALL MONTHS, WITH ITS BEAUTIFUL LIGHT-FILLED, LENGTHY DAYS AND PLETHORA OF BLOSSOMS.** The great flurry of culmination celebrations before the calm of summer: the end of the school year, graduations, Mother's Day (a personal favorite), Memorial Day weekend, and major league baseball. We pack a lot into this month! My youngest offspring graduates college this May, and my daughter will be ordained as a Rabbi next May. On Friday, May 17 at 6:00 pm, our Emanu-El 12th-graders will lead us in a beautiful graduation Shabbat ceremony. If you have not attended in the past, mark your calendar and join us! The fruits of our Jewish educational labors blossom in May, and this service gives us hope for the future of our people.

Then on to summer when the goal is to slow everything down. Take time off, travel, go to the beach. While we never "close," during the summer, Emanu-El does take a break from the relentless pace of our diverse and vibrant programming opportunities. We continue to hold services throughout the summer — every Friday night at 6:00 pm and Shabbat mornings at 10:30 am — as well as offer Torah study every Shabbat morning at 9:15 am. When you're in town, please join us. Our services are relatively short; filled with music, tradition, and innovation; and (usually!) include an inspiring message from the Torah. Our services are a perfect way to frame your weekend.

Additionally, because we all tend to spend less time expressing our Jewish identity at Temple during the summer, it's a great time to inventory what makes our homes *Jewish* homes. Your home can be a mini-temple and a center for building Jewish expressiveness, and we are here to help with that. Please let us know if you need assistance in affixing a mezuzah or a recommendation for a few good

books to build your Jewish library (for example, *The Golem and the Jinni* by Helene Wecker makes for a fun summer fiction read). There are endless variations on ways to experience Shabbat in your own home. Many of you already have your own Shabbat practice, but if not, start by simply having two Shabbat candles at the ready for Friday nights (pick them up at the local grocery store or online). Select your wine or non-alcoholic fruit of the vine. Make or buy a challah. Invite a friend, or several friends, to your home. Organize a Shabbat potluck at home, or in a park. Change your Friday night or Saturday routine. Why?

**Shabbat is a GIFT provided by our Jewish tradition, and there are a million ways to practice it that result in a deeper sense of wellbeing, connection, and spirituality.**

Not religious? No problem. You can still celebrate a day of rest by including an intentional nap and some outdoor time on Saturdays. It's always great to see you at Temple, but there is so much you can do at home. Our eight Rabbis, two Cantors, and three Jewish educators are all on call to support you in building a Jewish home.

August will be here before we know it. On Friday, August 23, we want all of you to show up to help welcome the Interfaith community at our 6:00 pm service with very special guest, Yemenite refugee Mohammed Al-Samawi, who was rescued by a handful of Jewish and Christian individuals.

But for now, it's still May. So take a slow, deep breath. Smell the flowers. Celebrate your Mother. And plan to attend our Emanu-El graduation.

*It is all ahead of us...*



# UPCOMING EVENTS

## Rabbi Ryan Bauer in Conversation with New York Times Columnist David Brooks

**Wednesday, May 1, 7:30 pm,  
Sydney Goldstein Theater,  
San Francisco**

David Brooks is an op-ed columnist for the New York Times, and he appears regularly on the *PBS NewsHour*, NPR's *All Things Considered*, and NBC's *Meet the Press*. He is the author of several books, including *The Road to Character* and *The Social Animal: The Hidden Sources of Love, Character, and Achievement*. Tickets for this event can be purchased online at [www.cityarts.net/event/david-brooks-2/](http://www.cityarts.net/event/david-brooks-2/).



## Classic Shabbat Service: Celebrating Rabbi Lawrence Kushner's 50 Years in the Rabbinate!

**Friday, May 3, 6:00 pm**

Please join us for this special Classic Shabbat Service when we will honor Rabbi Lawrence Kushner and hear his sermon entitled "My Half-century as a Rabbi: Some True Stories."



## 1969 Confirmation Reunion

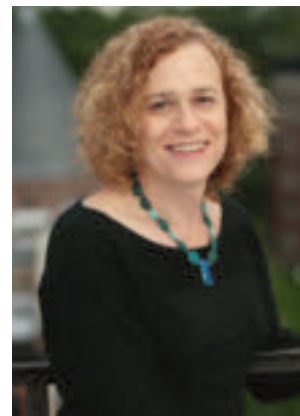
**Friday, May 17, 7:00 – 9:00 pm**

Were you confirmed at Emanu-El in 1969? (*Hint: you would have graduated high school in 1971*). If so, you are invited to your reunion on May 17, when you will be honored at this year's Confirmation service and treated to dinner! If you haven't already been contacted — or if you know someone who should be — please call or write Terry Kraus, Director of Membership at (415) 750-7552 or [membership@emanuelsf.org](mailto:membership@emanuelsf.org).

## Shavuot with Congregation Sha'ar Zahav

**Saturday, June 8, 6:30 pm**

We are joining with Sha'ar Zahav in celebrating the holiday of Shavuot with deep learning into the night. Our featured teacher will be Joy Ladin, Gottesman Chair in English at Yeshiva University. Ladin is the first openly transgender employee of an Orthodox Jewish institution. Her memoir, *Through the Door of Life: A Jewish Journey Between Genders*, was a finalist for a National Jewish Book Award.



## Rise of Anti-Semitism in America vs. Europe

**Tuesday, June 11, 6:30 – 8:30 pm, Martin Meyer  
Sanctuary**

In recent years, both America and Europe have seen a dramatic increase in anti-Semitic vandalism, acts of violence, and political rhetoric. What was once hidden is now at the forefront of our communities. But are these the same phenomenon? Is what we see in European cities like Paris or Berlin comparable to what happened in Pittsburgh, Pennsylvania? How alarmed should we be? What more can we do to counter these incidents?

Be part of this exploration and conversation with two renowned experts on both continents: Seth Brysk, the ADL's Central Pacific Regional Director, and Rabbi Andrew Baker, the AJC's Director of International Jewish Affairs.



Seth Brysk



Rabbi Andrew Baker



## Pride Shabbat Service

*Friday, June 28,*

*5:30 pm Pre-Oneg; 6:00 – 7:00 pm,*

*Martin Meyer Sanctuary*

Join San Francisco's Jewish and LGBTQ communities at Congregation Eanu-El to meet Tyler Gregory, Executive Director of A Wider Bridge. Tyler will share the important work of A Wider Bridge — the LGBTQ organization building support for Israel and LGBTQ Israelis.

For more information, please contact [bgordon@emanuelsf.org](mailto:bgordon@emanuelsf.org)

**EQUALITY IN ISRAEL. EQUALITY FOR ISRAEL.**

[AWIDERBRIDGE.ORG](http://AWIDERBRIDGE.ORG) | [f](#) [t](#) [@](#) [@AWIDERBRIDGE](#)

## Classic Shabbat Service with Rabbi Stephen Pearce and Cantor Roslyn Barak

*Friday, July 5, 6:00 – 7:00 pm, Main Sanctuary*

Emanu-El is thrilled to announce that our beloved Senior Rabbi Emeritus Stephen Pearce and Cantor Emerita Roslyn Barak will co-lead this Classic Shabbat service. Mark your calendars now!



## Rabbi Carla Fenves

This past April, Rabbi Carla Fenves was elected to the Board of Directors of the Central Conference of American Rabbis (CCAR). CCAR is the



Reform Rabbinic leadership organization, the members of which lead the Reform Movement on important spiritual, social, cultural, and human rights issues. CCAR creates and sustains the Judaism of tomorrow. "I am so honored to have been elected to the CCAR Board of Directors," said Rabbi Fenves. "It is a special opportunity for me to connect with Reform Rabbis throughout North America and to represent Emanu-El at a national level."

Mazel tov, Rabbi Fenves!





## San Quentin Theatre Workshop with Marin Shakespeare Company

*Sundays, July 14 and September 22, 8:30 am – 12:30 pm*

*Experience the power of rehabilitation through the arts.*

Marin Shakespeare Company invites Emanu-El congregants to participate in two Shakespeare workshops at San Quentin State Prison. Each workshop will include theatre exercises and Shakespeare readings by actors who are inmates at San Quentin. After visiting the prison, interacting with inmates, and participating in the workshop activities, you will come away with a new perspective on our criminal justice system and the healing power of the arts! Please plan to arrive at 8:30 am and stay until 12:30 pm.

These free workshops are led by Marin Shakespeare Company's Lesley Currier. They are open to anyone age 18 or older, but participation is limited, so sign up in advance!

**July 14th Workshop — Sign up no later than May 27!**

**September 22nd Workshop — Sign up no later than August 5!**

Note that you'll be required to submit the following info in order to obtain clearance:

- Full legal name
- Date of birth
- Social Security number
- Driver's license number and state of issue (or other official photo ID such as a passport)

Send your information directly to Lesley Currier at [lesley@marinshakespeare.org](mailto:lesley@marinshakespeare.org) or call (415) 499-4485. Be sure to mention that you are a member of Congregation Emanu-El!

## Third Annual Emanu-El Tahoe Shabbat

*Friday, August 2, 6:00 – 8:00 pm, Home of  
Stuart Corvin and Marissa Wertheimer*

*Led by Rabbis Beth and Jonathan Singer*

This year, Stuart Corvin and Marissa Wertheimer have graciously agreed to host us at their lovely home off the beautiful blue shores of Carnelian Bay in North Lake Tahoe. Please arrive by 6:00 pm (address provided once you have registered). A brief, warm Kabbalat Shabbat service will be followed by dinner provided by Stuart and Marissa. You are welcome to bring a dessert or beverage of your choice to share.

All Emanu-El families and individuals are welcome. Let's make this a memorable and joyous Shabbat as part of this summer's festivities!

## Dad and Kids Annual Summer Camping Trip (The Tribe for Men)

*Friday, August 9 through Sunday, August 11  
Camp Cazadero*

Details and registration info coming soon — check our website for updates!

## The Radically Welcoming Shabbat Service

*Friday, August 23, 6:00 pm,  
Main Sanctuary*

Join us for this "back to shul" event at which we will welcome, not only our members, but also our Interfaith partners. This radically hospitable Shabbat service will feature guest speaker Mohammud Al-Samawi.



# YASHER KOACH!

## Frances Wittman-Rosenzweig

A huge mazel tov to Frances Wittman-Rosenzweig (Pre-K and Curriculum Coordinator for the Congregation Emanu-El Preschool) who has been selected as a recipient of the Helen Diller Family Award for Excellence in Jewish Education! This award recognizes and honors educators offering pre-collegiate programs in Jewish education who have made an extraordinary impact on the youth of our community.

Frances has been part of our preschool community since 1998, and she and her husband Carl have raised their children Hannah, Rachel, and Avram here at Emanu-El. We are thrilled to celebrate this very special and well-deserved honor with Frances.

Through incremental, carefully considered, and masterfully executed steps, Frances has shaped the trajectory of our preschool curriculum, Judaic programming, and community engagement. Her impact on our program is evident through the growing expertise and autonomy of teachers and staff as well as the deep internalization of foundational Jewish values in our students and their families.

Frances leads and educates with integrity and purpose.

From everyone on the Emanu-El Preschool staff: Thank you, Frances, for all you do. We are so proud of you!

## Jonathan Ferris

Our member, Jonathan Ferris, who has been playing and singing at our services for almost 20 years, is the recipient of the 2019 Helen Diller award for Excellence in Jewish education. He was nominated by Brandeis Hillel Day School where he has been a teacher for many years. We commend him for all the wonderful work he does enriching Jewish life in our own community and all around our city.

## Havurah Reuben Confirmation Class 5779/2019

From left to right: Jordy Bach-Fox, Avram Rosenzweig, Isabel Aks, Ben Jeremy, Nikki Shaw, Ike Beckman, Aliza Mayer, Ulrika Shragge, Marissa Torrano, Charlotte Haber, Ezra Parkhill, Josephine Berler, Eric Mosheim, Sophie Levine, Laurel Nelson, Eleanor Levinson-Muth

(Not pictured: Michael Berler, Kaya Brown, Emma Marino, Hanna Persky, Hezekiah Smithstein, Adrien Stroumza, Wes Wellner)

Join us on Friday, May 17 at 6:00 pm as this class will lead us in prayer and continue the Emanu-El legacy of Confirmation.

# Emanu-El Spotlight: Interview with Terry Kraus

BY BYRON GORDON  
COMMUNICATIONS/MARKETING

*On June 3, 2003, Terry Kraus began her duties as Congregation Emanu-El's Director of Membership. Since then, her presence has loomed large as our congregation has grown in diversity and expanded program offerings. Terry's history in Temple administration speaks for itself. She earned the Fellow in Temple Administration certification in 1990 and has been a board member and past treasurer of her professional organization, the National Association of Temple Administration (NATA). She has presented at regional and national biennials of the Union for Reform Judaism (URJ) and at NATA conferences; she was on the faculty of a NATA Institute; and she consulted to synagogues through the URJ/NATA Consulting Service. In 1994, Terry's NATA colleagues awarded her the Service to the Community Award for her work on hunger projects, and in 1999 they awarded Terry the Myron Schoen Service to Judaism Award for her work with MAZON: A Jewish Response to Hunger, on whose board she served for 10 years.*

*Anyone who has met Terry knows how diligently she has worked to make Emanu-El a beacon of welcome for Reform Jews everywhere, which is why we wanted to glean a little insight into Terry's own Jewish journey before she leaves her post as Director of Membership at the end of June (although she will remain with us as a devoted member of our congregation). Terry made time to sit down with me to discuss what Emanu-El means to her, some pivotal moments that have shaped her Jewish life, her views on Judaism in America today, and even her love of pets.*

**On June 21, Emanu-El will honor Terry at our One Shabbat Service. Please come!**

**Byron: Are you ready to retire? It's a bit of an ugly word, no?**

**Terry:** I think so, but I've never retired before. I've changed jobs, but this is new for me. I have so many mixed feelings. I just feel like it's time to step aside and let the "next generation" take over. On the other hand, I very much love what I do. I just can't do as much of it anymore. So, I'm enthusiastic about trying a few new things, including being a "Jew in the pew" instead of being the one at the back of the room wringing my hands [laughter]. I'm grateful to have had this long, fulfilling career, made possible because of all the dedicated clergy and colleagues I've worked with these many years.

**Talk a bit about your Jewish background.**

My cultural Jewish identity was shaped by my family and the city in which I lived until I was 12: Pittsburgh, Pennsylvania. My grandparents lived in Squirrel Hill and my parents and I lived in a similarly Jewish, but newer neighborhood not far from there. I did not have a formal Jewish education as my family was not affiliated with a synagogue.

**Later, you moved to Arizona.**

Yes, we moved to Phoenix when I was in the 7th grade, and I went from being in a nearly all-Jewish class to being the only Jew. There was a little bit of teasing, not really anti-Semitism, but just something that I wasn't used to. My teacher gave me a copy of Leon Uris' *Exodus* and that certainly was an eye-opener.

**You later joined the B'nai B'rith Youth Organization (BBYO). That must have been an intensely Jewish experience.**

Yes, I joined at the beginning of my freshman year in high school. While the religious experiences weren't as comfortable for me, I was never made to feel inadequate or "less than" about my lack of knowledge. I soaked up the camaraderie and the social justice work we did. I was active as a vice president in my chapter and became a regional president in my senior year. Those were truly four of the best years of my life. I am still close with friends I made during those years.

**What led you to a more organized affiliation?**

My ex-husband was a bar mitzvah tutor, so we were affiliated with the synagogues where he worked. When we were living in Scottsdale, the Paradise Valley synagogue was getting ready to hire its first executive director. We were friendly with the rabbi and his (then) wife, and he suggested I look at the job description. I had a very young child at the time and was reluctant to take on more in my life, but I also knew that you never get a second chance to be the first. They did a national search and hired me anyway. It was a wonderful opportunity and growth experience for me. I stayed there for 13 years and then moved to California to become the Executive Director of Congregation Beth Am in Los Altos Hill.

**What are some observations you've made about Judaism as practiced here at Emanu-El?**

I've learned so much in these last 16 years about how a large, historic synagogue functions. I've seen how Judaism and commitment to affiliation has changed over the years. My learning about Judaism really started in my teen years in BBYO, continued with on-the-job training at the previous synagogues I worked for, but I really learned the most here at Emanu-El. It was here that I celebrated my Anshei Mitzvah. What I've come to appreciate is how diverse a congregation we are. I love that people here have come from many different religious and ethnic backgrounds and gender identities. The congregation is so welcoming to all.



**Share with us a few highlights of your time spent here at Emanu-El.**

Having had the opportunity to see young adults start their careers here and go on to important jobs in the secular and Jewish communities is quite meaningful for me. One of my favorite things to do here is to connect congregants with commonalities. I'm not much of a dating matchmaker, but it's fun to connect people who have other things in common. One of my favorite events that we've celebrated for the past 3 years is my "pet" project, the blessing of the animals. I'm very proud of our Cooking for Congregants program because it came out of a plan that didn't work (neighbors signing up for a meal train). The program is run by two experienced chefs and their helpers who prepare meals to keep in the Temple freezer for those who are new parents, those who are ill and those who are grieving.

**The experience of being a Jew in America. How has it affected you?**

It was so shocking for me to move from my Jewish neighborhood in Pittsburgh to secular Phoenix in 1964. That was the first time I was aware that I was so different than my classmates. And it's not that my home upbringing was so particularly religious. My mother lit Shabbat candles; we would have family gatherings around the holidays. We were cultural Jews, if you will. But all of a sudden, I wasn't sure what I was.

**Back in 2016, the ADL conducted a poll that showed 14% of Americans or nearly 35 million people hold anti-Semitic views. How does that strike you?**

It makes me think these people have never met Jewish people. They haven't been in relationships with the Jewish community. Hate is passed down, generation to generation. And some of these people might be extremely educated but are just seeing one point of view.

**I keep thinking of what happened at Charlottesville. Do these peddlers of hate just live in a vacuum?**

I ask myself, why are the Jews always the scapegoats? Because we stand for ethics and morality? I've never been frightened to work at a synagogue. I've never felt personally threatened. At Emanu-El, I feel extremely secure because we invest a tremendous amount of resources in keeping our congregants and staff safe.

**It's difficult not to be concerned about how American Jewry is seen today.**

Nobody can read the newspaper today without being aware of the rise of anti-Semitic acts since the presidential election of 2016. I mean what happened at Squirrel Hill... that was my hometown! That was my grandparents' neighborhood. My aunt and uncle and cousins worshipped at Tree of Life synagogue. It happened on my birthday. It was just shocking. But there are so many changes in the way Jews look at their Judaism in America now that give

me pause. I think we have this deep thirst for community, and yet so many people don't realize that there is a wonderful community to discover at synagogues.

**Yet, you've become a strong supporter of intermarriage.**

With the proviso that children will be raised in a Jewish household. I really believe perspectives from people who didn't grow up in a Jewish family are important to be heard. I support diluting the Jewish gene pool because

there are so many Jewish diseases. I believe that there are plenty of men out in the Bay Area who would love to raise Jewish families if only they knew where to find the wonderful Jewish women we have. But on the other hand, it has to be firmly established before those children come into the world how they will be raised. And should there be divorce down the line, that can be a very contentious issue. I've seen families torn apart by how the children will be raised after the divorce between a Jewish and non-Jewish parent.

**The majority of Jews today marry outside the tribe.**

I think there's a lot that Jews can teach those who weren't raised Jewish about what Judaism can add to your life. About how Jewish children can be raised in a family where both parents

didn't grow up Jewish. We see it all the time in our Emanu-El community. We have such amazing congregants whom themselves are not Jewish but raised wonderful Jewish families. The capacity for change is always there. We've been changing for 5,780 years.

**Emanu-El is helping to lead that change, no?**

Yes. It's so easy for people to look at this beautiful facility and our long history and think, "oh, you're just traditional and stuck in time." But it's not true. We're constantly evolving and looking for different ways of worship, different ways of experiencing Judaism, bringing different people in. Emanu-El encourages innovation, change, questioning. Let me share with you a story:

When we had our first Director of Communication/Marketing, she was a member of the senior staff and would attend regular planning meetings. Sometimes there can be heated discussions. I would look across the table and sometimes I'd see a "deer in the headlights" expression on her face as she seemed so bewildered by the back and forth, not being Jewish. I took her aside and showed her a page of Talmud. I pointed out how, across the centuries, rabbis argued with one another and that's what Jews do. We aren't afraid to question and challenge.

But, how do we bring that level of comfort to the non-Jew who comes to join our community? We keep trying. We are as welcoming as we can be. We wrestle with the idea of opening that tent widely all the time.

*continued on next page*



*continued from previous page*

**A little under 4,000 synagogues exist in America today. What do you think that's indicative of?**

Difficult to say. There are about 900 synagogues in the Reform movement. Some synagogues are so small and they are struggling. You look at the Rust Belt of this country and much of the Jewish population doesn't live there any longer. From my Arizona synagogue experience when Jews who lived in the northeast moved to the west, they didn't necessarily want to join a synagogue. They'd raised their children already; they paid enough building funds; and in a way, they were running away from their Jewish identity. Sun Belt synagogues have real affiliation challenges. Even here, we see that the younger generations of our founding families aren't with us in the numbers that they were in previous generations. It's not an automatic thing to join a synagogue anymore just because your parents did. To me, joining a synagogue is a type of insurance because when you have a need, clergy and staff will be there for you.

**Are we a model for other synagogues?**

We're a model in many ways. Our Young Adult community is a huge model. I talk about that with my colleagues all the time. Our dues structure encourages young adults to join. The breadth of our programming is a model. But it does come at a very high cost and does have to be supported.

**Emanu-El charges dues. I keep telling potential prospects that the dues are what pay for so much of what this incredible community offers, and the only way you can take full advantage of it is to come and experience it. But then I've been reading that many synagogues are moving away from mandatory dues structure to a more volunteer payment system. Synagogues that make this transition, do you feel they will survive in today's climate?**

It very much depends on the culture of the congregation. We had a voluntary dues system for years at Emanu-El. In fact, when I came here, that was one of the attractive features about working as the Director of Membership in that I didn't have to talk to members about their dues. But then an analysis was done by our leadership and we discovered we weren't generating the revenue needed to keep this institution solvent. The problem with the synagogue, with a membership like ours and structure like ours, is when you give the impression that you are a wealthy synagogue, people figure someone else is supporting it and they may not need to. So not all those who could donate did so until we asked them in a different way. And we're now on much healthier financial footing with a dues structure.

**Let's talk about pets. I know you're a BIG FAN of our annual Blessing of the Animals. When did they become such an important part of your life?**

I've come to learn about animals and their emotional intelligence certainly because of the friends I have in Costa Rica whom I visit twice a year. And by being with their 14 horses, I've come to see how much people can learn about themselves through animals.

**Share with us the story behind these friends of yours in Costa Rica?**

In 1989, my (then) husband and I, along with our 4-year-old daughter and my mom, were boarding a cruise ship in Miami. My ex was holding our daughter, and a man not far behind us began having fun with her. As a result, we got to know this lovely family from St. Louis, who were on board with their 10-year-old son. We attended their son's bar mitzvah, and they came to my daughter's bat mitzvah. We took trips together. It grew into a great friendship.

Around 2000, we lost contact with each other. And for years I wondered if we would get back in touch. I periodically used the internet to search for them, but they have common names. And then a stroke of luck happened. In 2010, a friend of theirs mentioned finding an old acquaintance on Facebook. My friends did the same thing, and lo and behold, they found me through my daughter's Facebook profile. They told me they had moved to Costa Rica and had learned equine therapy (where horses remain on the ground and are not ridden) and owned more than a dozen horses. They invited me to come and visit. I thought to myself: hot, humid, and rural. Not for me. But then they sent me photos and videos of the work they had done with their clients. I've now visited them 13 times since November of 2011. It is truly remarkable. I just love to be with those beautiful animals.

**Talk to us about your daughter Rachel.**

She grew up in Arizona. I named her after her great-great-grandmother who was the matriarch of her family and who brought her children over to America. She outlived four husbands! [laughter] She was a very strong woman whom I wanted my daughter to model. Rachel attended Occidental College near Los Angeles. She has two graduate degrees from the LBJ School of Public Affairs at the University of Texas in Austin. She now works as a psychiatric social worker for San Mateo County. I'm very proud of her.

**What do you want to tell our new Senior Director of Congregational Engagement & Membership?**

I hope she enjoys coming to Friday night Shabbat as much as I do! It's a party every week for me. I love seeing our regulars and those who don't usually come. It's a great way to meet new people. Just as important, you have to love what you do. In my professional organization, I'm one of the longest-term members. I've seen incredible turnover over the past 32 years. So many good people have started out in the field, and they ultimately burned out or felt a lack of appreciation. I'm fortunate that I was able to come to Emanu-El and be able to specialize in membership and programming and social justice. I would just advise the next person that you have to love what you do because you're going to do it for many hours, and to do it well, you have to form those relationships that will sustain you.

*continued on page 16*

# COMMUNITY ENGAGEMENT

As a large congregation, we recognize the importance of small group connection, so we create many opportunities for learning, socializing, and enjoying local culture together. These group gatherings generally occur in the evening hours or on weekends. Refer to the Community or Social Justice pages on our website for more information and staff contact information. Remember to register online in the MyEmanu-El portal for all of these programs (unless otherwise noted below) so we know to expect you.

## Your Community Engagement Team:

**Terry Kraus**

tkraus@emanuelsf.org, x111

**Shelby David**

sdavid@emanuelsf.org x177

**Ann Jackson**

ajackson@emanuelsf.org x138

**Frana Price**

fprice@emanuelsf.org, x0

**Rebecca Reiner**

rreiner@emanuelsf.org, x170

## Weekday Activities at the Temple

**Choose one or more and participate!**

### Cooking for Congregants

*Thursdays, May 2, 23, and 30 / June 13 and 27 /  
July 11, 18, and 25*

**9:00 – 11:00 am,  
Emanu-El Kitchen**

**No charge.**

Be one of two volunteers preparing meals for Emanu-El congregants who are facing significant life challenges. You'll work under the guidance of former restaurant owner Gail Laghi and chef Sari Swig. New participants are welcome! Register at the Temple website by the Tuesday before each cooking day, or call Shelby David at (415) 751 2541 x177.



While volunteer slots for Cooking for Congregants are limited due to the layout of our kitchen, you can help by calling the Temple office when you become aware of congregants who are grieving or ill or have become new parents. By law, hospitals will not release patient information, so clergy and staff rely on the congregant network to enable us to reach out.

*Here's just one of many expressions of appreciation for Cooking for Congregants:*

*"Thank you so much. Sari just dropped off a week's worth of meals for my family and me. I can't tell you how surprised I am by this generosity. Please let the Cooking for Congregants team know that I am so grateful for this lovely gift. With lots of gratitude."*

### The Stories of Your Life: Guided Autobiography and Life Review Writing

**Mondays, May 6, June 3, July 1, 10:00 am – noon,  
Room 53**

**No charge; any skill level welcomed.**

This is a great opportunity for self-reflection and the chance to tell your unique story while also getting to know other warm and wonderful members of our congregation. Join this friendly group that meets monthly to share stories on assigned themes. It's about the story, so no writing experience is necessary.

New participants are always welcome! Online registration is required. For more information, contact the group facilitator Nancy Alpert, LCSW at nalpo@igc.org.

### Scrabble

**Mondays, 11:00 am –  
3:00 pm, Room 57**

**No charge; drop in; all  
ages & experience levels  
welcomed.**

Do you enjoy the challenge of putting letters together to form words? Join the Scrabble group and play a rousing game or two! Expand your vocabulary along with your social circle. Bring a Scrabble set (optional) and, of course, your appreciation of words. *Scrabble meets every Monday except when the Temple is closed.*



**Stay tuned to future editions of the Chronicle for information on the following groups:**

**The Women's Group** (gatherings throughout the year for all adult women of Emanu-El)

**Interfaith Group** (gatherings for Emanu-El Interfaith members and families)



# COMMUNITY ENGAGEMENT *(cont'd.)*

## **Mah Jongg**

**Tuesdays, 1:30 – 4:30 pm,  
Rinder Chapel**

**No charge; drop in.**

These sessions are open to all levels of experience, but you must know the basics as there will be no teaching — play time only! Arrive within the first half hour if you have any questions. *Mah Jongg meets every Tuesday except when the Temple is closed.*



## **Bridge Club – Lessons and Game**

**Tuesdays, May 14 and 28, June 11 and 25,  
10:00 am – noon, Rinder Chapel**

**Cost: \$20 for members; \$25 for friends of members**

**Drop in.**

If you are beyond the level of novice, join this very popular and lively group for duplicate-style bridge. Play while improving your game. Certified bridge instructor and American Contract Bridge League champion Deborah Murphy is the instructor.

---

## **Congregant Groups & Gatherings**

**Meet other congregants at these weekend and evening get-togethers! Register online! Contact Terry Kraus ([tkraus@emanuelsf.org](mailto:tkraus@emanuelsf.org)) with any questions.**

### **Lag Ba'Omer Sing Along with Cantor Attie & Rabbi Bauer**

**Wednesday, May 22, 5:30 – 7:30 pm,  
Terrapin Crossroads, San Rafael**

Please join us for our 2nd Annual Lag Ba'Omer sing along, no-host dinner, and drinks at Terrapin Crossroads in San Rafael — Phil Lesh's (of the Grateful Dead) music Mecca! Bring musical instruments and sing songs around the fire with our Cantors. If you've never been to Terrapin Crossroads, imagine a warm summer evening of singing in front of a campfire, with the sound of waves lapping at the bay shore and kids playing on a playground.

### **The Tribes' Family Fun Day at The Vineyard Club**

**Sunday, May 19, 11:00 am – 4:00 pm,  
The Vineyard Club, Geyserville**

*A joint event of The Tribe for Men and The Tribe for Women — back again by popular demand for the THIRD year!*

Join Rabbi Ryan Bauer and Rabbi Carla Fenves and their families, along with other Tribe families, for a special fun-filled day at the Vineyard Club as we celebrate the end of another great year. Relax, mingle, and play! Spend the entire day enjoying the lake and surrounding scenery.

Activities will include swimming, water trampoline, tennis, basketball, and pétanque. There will be a large grassy area for games, a large sandy beach, and a full playground! Please bring your own game balls, as well as other games and toys, kayaks, and stand-up paddle boards.

A taco truck lunch will be provided. Space is limited, so register soon!

### **The Men's Group Breakfast**

**One Sunday a month, 9:30 – 11:30 am**

Men of Congregation Emanu-El have a monthly opportunity to socialize and study with a member of the clergy at a private home. This cross-generational group provides a small group experience so important to building community. Men's Group events are congregant only and require registration. If you have any questions please contact Rebecca Reiner at [reiner@emanuelsf.org](mailto:reiner@emanuelsf.org) or (415) 751-2541 x170.

*Thanks to donations from two members of the Men's Group, the majority of gatherings are now offered for free. If you would like to sponsor a Men's Group breakfast, please let us know.*

### **Two Baby Groups Available!**

Drop in with your little one and spend time with other parents. Join us as we prepare to welcome Shabbat on Fridays and celebrate Havdalah on Mondays. Enjoy music, stories, puppets, and more with Early Childhood Educator Mimi Greisman. Take advantage of a wonderful opportunity to connect with other parents and create lasting friendships!

Cost: Members FREE; \$10/session for non-members (first session free)

### **Bagels and Babies**

**Fridays, 9:30 – 11:00 am, Martin Meyer Reception**

### **Mazel Tots! (birth to 18 months)**

**Mondays, 9:30 – 11:00 am (no session May 27),  
Martin Meyer Reception**

# Tzedek Council

## What is the Tzedek Council?

The Emanu-El Tzedek Council was launched in August 2015 as a congregant-, board-, and clergy-run group, charged with the task of raising our participation and impact in the social justice arena.

## G-House Dinners

*Our Sunday night volunteer dinners at G-House have been so successful, we're continuing them throughout the spring months!*

Run by the Larkin Street Youth Services, G-House — a 20-bed housing program for San Francisco homeless young adults (ages 18 to 24, transitioning from adolescence to adulthood) — provides residents with life tools to remove the obstacles that threaten a successful transition to independent living. Emanu-El has partnered with G-House to support youth integrating into the community by bringing in volunteers on Sunday evenings to provide a warm meal, eat, and build meaningful relationships with the residents.

Visit [www.emanuelsf.org/g-house-dinners/](http://www.emanuelsf.org/g-house-dinners/) to learn more. Spring dates are open for registration, but volunteer slots fill quickly, so please sign up now!

## Driven to Care — Order Online for Delivery to the Temple

Check the drive's Amazon Wish List and Target Wish List at: [www.emanuelsf.org/emanu-el-driven-care/](http://www.emanuelsf.org/emanu-el-driven-care/). Thank you for being part of this great mitzvah!

## Welcome Baskets to Help Homeless Youth Transition into New Homes

In May, we are compiling “welcome baskets” to help Larkin Street Youth Services ([www.larkinstyouth.org](http://www.larkinstyouth.org)) graduates get settled in their new homes. The beneficiaries will have successfully completed Larkin Street's program, which provides housing, education, employment training, and health and wellness support to help young people get off the street for good. Our goal is to assemble 30 welcome baskets to get these resilient young people off to a good start and ensure that they remain in stable housing for the long-term.

Please refer to the following wish list for the types and numbers of items we need to make the welcome baskets:

- Towels
- Bedding
- Pillows
- Small cleaning supplies – kitchen & bath
- Laundry hamper
- Laundry detergent
- Gift cards so they can purchase items to personalize their new space



## Membership Renewal

Yes, it's that time of year already! Please watch for your bright yellow 6" x 9" envelope with membership renewal information, then log into your MyEmanu-El membership portal on our home page and make your generous commitment for the fiscal year that begins July 1. High Holy Day passes are generated by membership renewal, and it's a great favor to our hard-working staff to take care of this sooner rather than later. You can set up an installment plan and address any questions to [membership@emanuelf.org](mailto:membership@emanuelf.org).

Thank you!

# THANK YOU TO OUR DONORS

Thank you to all of our donors. The following gifts were received from February 1, 2019 — March 31, 2019

## GENERAL FUND — used where the need is greatest at the Temple

### Donna Alban

*in observance of the Yahrzeits of Sally Waterman and Jan Alban*

### Alla Alperin

*in memory of Lea Lakovetsky*

### Richard & Darla Bastoni

*in memory of Jeanette Werboff*

### Ronald & Elynor Berman

*in honor of Steve Goddard's 85th Birthday*

### Ilya Berman & Larisa Lisitsa

*in observance of the Yahrzeit of Zinaida Portnaya*

### Judith Camp

*in observance of the Yahrzeit of Jack Spang*

### Carole A. Cohen

*in observance of the Yahrzeit of Ivan Anixter*

### Andrew & Suzanne Colvin

*in memory of Jeanette Werboff*

### Mendy Eckhaus

*in observance of the Yahrzeit of Arthur Eckhaus*

### Barbara Feldman

*in honor of Jeremiah Saks's Bar Mitzvah*

### Harriet Friedman

*in memory of Jeanette Werboff  
Shelley Friedman & Tania Lowenthal  
in memory of Lois Friedman*

### Linda Gerard & Daniel Grossman

*in observance of the Yahrzeits of Moses and Verle Grossman*

### Clifford & Barbara Gerber

*in observance of the Yahrzeit of Louis Silverman*

### Patricia & Richard Gibbs

*in memory of Warren Hellman and Chris Hellman*

### Gloria Goldberg

*in memory of Jeanette Werboff*

### Sonya Gordon

*in observance of the Yahrzeit of Michael S. Gordon*

### Norman & Sandra Gordon

*in observance of the Yahrzeit of Milton H. Newman*

### Norman & Sandra Gordon

*in memory of Rose Rebecca Gordon*

### Stanley & Joan Gross

*in memory of Flo Lazar*

### Daniel & Alla Klionsky

*in observance of the Yahrzeit of Tsvia Gluzman*

### Terri Kwiatek

*in memory of Jeanette Werboff*

### Ronald & Eva Lackenbacher

*in memory of Leny Lackenbacher*

### Paul & Arlene Leiber

*in observance of the Yahrzeit of Paul Leiber*

### Gershon & Jean Levinson

*in observance of the Yahrzeit of Alfred Levinson*

### Jesse M. Levy

*in honor of Dr. John A. Kerner*

### Linda Liebschutz & Joseph Taylor

*in observance of the Yahrzeit of Kathleen Taylor*

### Susan Nelson

*in memory of Jeanette Werboff*

### Ellen Newman

*in honor of Alexandra Kurland*

### Ronald Pollack

*in honor of Vivian Ariella Pollack's baby naming*

### Roslyn Rhodes

*in observance of the Yahrzeit of Ann Teitelbaum*

### Nina Schwartz

*in observance of the Yahrzeit of Pauline Schwartz*

### Ruth Stein

*in memory of Alan L. Stein*

### Sylvia Storey

*in observance of the Yahrzeit of Samuel Storey*

### James Thomson & Elisabeth Semel

*in memory of Max Semel*

### Mary Ann Tonkin

*in observance of the Yahrzeit of Michael Brown*

### Mariya Urman

*in observance of the Yahrzeit of Beyla Urman*

### Nick & Eugenia Vestel

*in observance of the Yahrzeits of Nachman Broitman and Zoya Vestel*

### Nick & Eugenia Vestel

*in observance of the Yahrzeit of Kuana Broitman*

### Joanne & Alan Vidinsky

*in memory of Jeanette Werboff*

### Beth & Alan Weiss

*in memory of Daniel (Bud) Cohen*

### Harriet Israel

## Flowers for the bima — listings are included here

### Leela de Souza Bransten & Peter Bransten

*in honor of Arielle de Souza Bransten's Bat Mitzvah*

### Karen Hindin

*in honor of Samuel Pasternak's Bar Mitzvah*

### Karen Pell & Heather Lupa

*in honor of Tessa Pell 's Bat Mitzvah and Herschel Pell's Bar Mitzvah*

### Todd Sisitsky & Holly Hagens

*in honor of Mia Sisitsky's Bat Mitzvah*

### Sheva Tessler & Daniel Perman

*in honor of Elias Samuel Tessler Perman's Bar Mitzvah*

### Cynthia Vaughn & Mark Bloom

*in honor of Isaac Bloom's Bar Mitzvah*

## CANTORS' MUSIC FUND — supports the Congregation's music programs and is used for charitable giving at the Cantors' discretion

### Anonymous (1)

### Tania & Laurence Albukerk

### Leonard & Michelle Brant

*in observance of the Yahrzeit of Sarah Evenchick Padams*

### Leonard & Michelle Brant

*in observance of the Yahrzeit of Rebecca Brant*

### Mark & Stephanie Breitbard

*in honor of Davis Breitbard's Bat Mitzvah*

### Leela de Souza Bransten & Peter Bransten

*in honor of Arielle de Souza Bransten's Bat Mitzvah*

### Karen Hindin

*in honor of Samuel Pasternak's Bar Mitzvah*

### Sasha & Irina Kovriga

*in honor of Mimi Kovriga's Bat Mitzvah*

### Patricia Kristof Moy

*in honor of Lenore Naxon, in friendship and appreciation*

### Karen Pell & Heather Lupa

*in honor of Tessa Pell 's Bat Mitzvah and Herschel Pell's Bar Mitzvah*

### Todd Sisitsky & Holly Hagens

*in honor of Mia Sisitsky's Bat Mitzvah*

### Sheva Tessler & Daniel Perman

*in honor of Elias Samuel Tessler Perman's Bar Mitzvah*

### Cynthia Vaughn & Mark Bloom

*in honor of Isaac Bloom's Bar Mitzvah*



Thank you to all of our donors. The following gifts were received from February 1, 2019 — March 31, 2019

**EMANU-EL COMMUNITY SERVICE FUND — promotes and supports social action and community service programs**

**The Harry and Jeanette Weinberg Foundation, Inc.**

**Allen Bennett**

*in memory of Blossom Levin*

**Elyse Blatt**

*in observance of the Yahrzeit of David Salven*

**Charles & Lenore Bleadon (3)**

**Stuart & Debra Eisendrath**

*in observance of the Yahrzeit of Marvin Eisendrath*

**Robert & Jennifer Futernick**

*in observance of the Yahrzeit of Jerry Ornstein*

**Joy Goldstein**

*in appreciation of Rabbi Bauer's presentation at the Jewish Poverty Convening. Very inspiring!*

**David Rubenstein**

*in memory of Isaak Khory*

**Rita Semel**

*in observance of the Yahrzeit of Miriam Rohen Resnick*

**Rita Semel**

*in observance of the Yahrzeit of Max Semel*

**FOR THE ROOSEVELT FOOD PANTRY**

**Leslie Friedman & Jonathan Clark**

*in observance of the Yahrzeit of Harriet Clark*

**William & Stephanie Scott**

*in memory of Lita Berman Edwards*

**EMANU-EL ENDOWMENT FUND — secures the congregation's significant program needs while ensuring the Congregation's financial future**

**Helene Ettelson**

*in memory of George Ettelson*

**EMANU-EL LIFE-CYCLE FUND — enables all congregants to celebrate significant milestones, regardless of economic circumstances**

**Tania & Laurence Albuquerk**

**Stella Daniels**

*in observance of the Yahrzeit of Murray Goldstein*

**Stella Daniels**

*in observance of the Yahrzeit of Fannie Goldstein*

**Leela de Souza Bransten & Peter Bransten**

*in honor of Arielle de Souza Bransten's Bat Mitzvah*

**Karen Hindin**

*in honor of Samuel Pasternak's Bar Mitzvah*

**Sheva Tessler & Daniel Perman**

*in honor of Elias Samuel Tessler Perman's Bar Mitzvah*

**Cynthia Vaughn & Mark Bloom**

*in honor of Isaac Bloom's Bar Mitzvah*

**EMANU-EL PRESCHOOL FUND — provides scholarships and support for our Preschool**

**Caren Alpert (2)**

**Susan Cole & Alan Ovson**

*in observance of the Yahrzeit of Etienne Wahlgren*

**Susan Cole & Alan Ovson**

*in honor of Elodie and Zazie Wahlgren*

**Cassie & Ian Cooney**

**David Hughes**

*in appreciation of Nika Greenberg*

**Allyson & Matthew Kaufman**

*in observance of the Yahrzeit of Dr. Paul Bohensky*

**Ariel & David Parrish**

**Ben & Erica Portnoy**

**Lauren Weitzman & Bruce Falck**

**Jordan Zamir & Chelsea Wood**

**ONEG SHABBAT AND KIDDISH SPONSORSHIP FUND — provides for the weekly Shabbat Oneg, Kiddush, and other congregational receptions**

**Anonymous (1)**

**Tania & Laurence Albuquerk**

**Martin & Deborah Bloch**  
*in celebration of Audrey Rose Perlmutter's baby naming*

**Mark & Stephanie Breitbard**

*in honor of Davis Breitbard's Bat Mitzvah*

**Alison Datz & Joel Kamisher**

*in observance of the Yahrzeit of Gennadiy Govzman*

**Leela de Souza Bransten & Peter Bransten**

*in honor of Arielle de Souza Bransten's Bat Mitzvah*

**Tod & Marion Hindin**

*in honor of Samuel Pasternak's Bar Mitzvah*

**Susan Kitchell**

**Sasha & Irina Kovriga**

*in honor of Mimi Kovriga's Bat Mitzvah*

**Marjorie Krausz**

*in honor of Sean Krausz and Courtney Lentz's wedding on October 27th*

**Cathy Manshel & Bill Rusitzky**

*in honor of Isabel Manshel Rusitzky*

**Cindy Morris**

*in celebration of Steve Goddard's birthday*

**Meta Pasternak**

*in honor of Samuel Pasternak's Bar Mitzvah*

**Karen Pell & Heather Lupa**

*in honor of Tessa Pell's Bat Mitzvah and Herschel Pell's Bar Mitzvah*

**Mitchell Rubenstein and Susan Gordon**

*in honor of baby naming of Lucie*

**Todd Sisitsky & Holly Hagens**

*in honor of Mia Sisitsky's Bat Mitzvah*

**Charles & Sheron Sugarman**

*in honor of Stephen Goddard's birthday*

**Sheva Tessler & Daniel Perman**

*in honor of Elias Samuel Tessler Perman's Bar Mitzvah*

**Cynthia Vaughn & Mark Bloom**

*in honor of Isaac Bloom's Bar Mitzvah*

**Pamela Wellner & Eugene**

**Dickey**

*in observance of Eva and Lisa Wellner*

**PAUL J. MATZGER YOUNG LEADERSHIP FUND**

**Lucia Matzger**

*in observance of the Yahrzeit of Paul J. Matzger*

**RABBIS' DISCRETIONARY FUND — used for charitable giving at the Rabbis' discretion**

**Tania & Laurence Albuquerk**

**Gedalia Braverman**

*in memory of Ariela Braverman*

**Mark & Stephanie Breitbard**

*in honor of Davis Breitbard's Bat Mitzvah*

**Stephanie & Mark Buller**

*in honor of Rabbi Carla Fenves*

**Eleanor Coffman**

*in celebration of Ruth & Bernard DeHovitz's birthdays!*

**Leela de Souza Bransten & Peter**

**Bransten**

*in honor of Arielle de Souza Bransten's Bat Mitzvah*

**Benjamin Elkin**

# DONORS (cont'd.)

---

Thank you to all of our donors. The following gifts were received from February 1, 2019 — March 31, 2019

**Brenda Friedler**

*in memory of Clare Harding*

**Brenda Friedler**

*in honor of Rabbi Stephen Pearce  
and Laurie Pearce*

**Susan Friedman & Michelle Jean**

*in memory of Joyce and  
Marvin Friedman*

**Nancy Goldberg & Alex Rynecki**

*in honor of Rabbi Beth Singer*

**Karen Hindin**

*in honor of Samuel Pasternak's  
Bar Mitzvah*

**Shelley & I. Marshall Kahn**

*in memory of Jeanette Werboff*

**Ron & Barbara Kaufman**

*in honor of Ari Kaufman's Bar Mitzvah*

**Sasha & Irina Kovriga**

*in honor of Mimi Kovriga's Bat Mitzvah*

**Abe Marshall, Hudson Soofer,**

**Sophie Levin, Samantha Gorman, &  
Zoe Gorman**

*in honor of Morah Esther, from her  
4th grade Hebrew class*

**Erica & Alejandro Mills**

*in celebration of Sloane Mills's baby  
naming*

**Karen Pell & Heather Lupa**

*in honor of Tessa Pell's Bat Mitzvah  
and Herschel Pell's Bar Mitzvah*

**Richard Sax**

*in memory of Jackie Sax*

**Jim & Emily Scheinman**

*in honor of Rabbi Bauer's talk to the  
JVC Network*

**Arthur & Marilyn Silver**

*in memory of Silvia Zuercher*

**Todd Sisitsky & Holly Hagens**

*in honor of Mia Sisitsky's Bat Mitzvah*

**Howard & Lynn Tatar**

*in appreciation of Rabbi Pearce,  
Rabbi Jonathan, and Ariana Estoque*

**Sheva Tessler & Daniel Perman**

*in honor of Elias Samuel Tessler  
Perman's Bar Mitzvah*

**Amy Torrano****Cynthia Vaughn & Mark Bloom****Albert Villa (2)****Herbert Weiner**

*in observance of the Yahrzeit of  
Olga M. Weiner*

**Lawrence & Caroline Werboff**

*in memory of Jeanette Werboff*

**ROSENSTEIN ADULT EDUCATION  
FUND — supports a variety of  
Emanu-El's Adult Education Programs****Rhoda Gilbert**

*in memory of Rose Gordon*

**YOUTH EDUCATION FUND —  
supports special programming and  
materials for the Youth and Family  
Education Program****Harry & Patricia Battat**

*in observance of the Yahrzeit of  
Fanny Battat*

**Mahdokht Frouzan**

*in observance of the Yahrzeit of  
Soufer Frouzan*

**Daniel & Alla Klionsky**

*in observance of the Yahrzeit of  
Usher Feldman*

**Bonnie Magid**

*in observance of the Yahrzeit of  
F. Armand Magid*

**Robin Reitzes**

*in observance of the Yahrzeit of  
Robert Reitzes*

**Lyudmila Sokolovskaya**

*in observance of the Yahrzeit of  
Riva Bogomolnaya*

**OTHER CONTRIBUTIONS**

---

**Lance Bayer**

*to enable professional choir members  
at the April 5 Shabbat service*

**Elliott & Suzanne Felson**

*to support Camp Nai Nai Nai*

**Irina Torrey**

*to support the Israel Action Committee*

**Paul Zarefsky**

*to support the All Staff Appreciation  
Luncheon*

**Laszlo N. Tauber Family Foundation,  
Inc.**

*to support the Tauber Adult Education  
Program*

**The Leonard and Sophie Davis Fund**

**Jewish Community Federation**  
*for religious scholarships*

*continued from page 10*

**Where does your Jewish journey take you now?**

I'm going to have more time on my hands, to be sure, and I plan to spend a good deal of it at the JCCSF. I'm on the staff as a water aerobics instructor, having been a water aerobics student for more than 20 years. In November, I took the certification exam for the Aquatic Exercise Association, and in January I was hired by the JCC. I plan to keep coming to our wonderful Shabbat services. I'd like to find some seasonal work, but not High Holy Days [laughter].

**You've been in a loving relationship with Mark Sugarman for the past 18 years. How did you two meet?**

He found me on JDate even when I forgot I still had a profile on JDate [laughter]. We had a not-so-good phone conversation at the beginning. I was living in Los Altos Hills.

He was living in San Francisco and had just broken up with his prior girlfriend. I wrote him the next day, saying I thought he was geographically too far and emotionally too close to his last relationship. He wrote me back saying "thank you," but also said if I ever wanted a walking tour of San Francisco, no strings attached, "just let me know" (and I really did want to learn more about San Francisco). A week later, he followed up with another phone call and we had a wonderful conversation. We met for that walking tour and have been together ever since.

**So, you turn him down, but he still has the gumption to phone you a week later. Why do you think he persisted?**

In his words, "I'm a salesman and I didn't close the deal."

## Generosity and Gratitude

Congregation Emanu-El's Development Committee is grateful for all our members who contribute their time, financial support, and personal networks to help make our community stronger. Beginning this month we will be featuring members who exemplify this spirit of generosity. In this inaugural piece we say thank you to Lenore and Charles Bleadon for all that they do to make our community thrive.

Lenore and Charles Bleadon have been longtime Emanu-El members. In fact, Lenore convinced her mother to let her join Emanu-El as a young girl so she could prepare for her confirmation with all her friends. Now, decades later, she and Charles have a granddaughter attending religious school and a granddaughter who celebrated her Bat Mitzvah at Emanu-El.

Lenore and Charles have been making monthly contributions to Emanu-El's Community Service Fund for over a decade. This dedicated support allows Emanu-El to support social justice initiatives throughout the Bay Area, including our Healthy Children Pantry in partnership with the San Francisco-Marin Food Bank and efforts to prevent youth experiencing homelessness.

The Bleadons recall that their first philanthropic gift was to help fund a project for the Jewish Community

Federation many years ago. The gift was prompted by a woman who was collecting tzedakah chiding Lenore, "You would spend \$100 on a dress but wouldn't give \$100 to Federation?!"

Lenore thought, *she's right!* Lenore believes that it is important to put life in perspective, and today her feelings about philanthropy are: "It becomes part of your life. It's inch by inch and it's habit." Lenore and Charles believe that we must keep Emanu-El thriving for future generations to come. "Jewish life is like building blocks. One thing builds on another. If you don't do little things along the way, there's nothing at the end." Lenore and Charles are also actively involved with the Jewish Community Federation and the Bay Area Jewish Healing Center. We are grateful for their continuing support over the years and through three generations!

By Talia Rothman  
Development Associate



## Donate Online!

Making a contribution to Emanu-El is a meaningful way to honor friends and family while supporting the synagogue. Please visit our website ([www.emanuelf.org/support-us/](http://www.emanuelf.org/support-us/)), select "Donate Now or Annual Giving," and follow the steps to make a gift. You will receive an electronic confirmation, followed by an acknowledgment letter in the mail. If you need assistance, contact Talia Rothman in the Development Office at [trothman@emanuelf.org](mailto:trothman@emanuelf.org) or (415) 750-7554.

## Appreciated Stock Gifts

Did you know that you could make charitable gifts — including your Emanu-El Membership Dues and Impact Fund gifts — by donating your appreciated stock? This is a great way to avoid capital gains taxes while supporting the Congregation.

**If you are making a stock gift, please use the following information:**

First Republic Securities Co, LLC  
Account Name: Congregation Emanu-El  
For Further Credit to Account Number: 33L064574  
Clearing Firm: Pershing LLC  
Pershing LLC DTC# 0443

Note: Please make the Development Office aware of your stock gift before it is transferred so your donation can be tracked and appropriately directed as you wish. Email Talia Rothman at [trothman@emanuelf.org](mailto:trothman@emanuelf.org) or (415) 750-7554.

## Corporate Matching

Many Bay Area companies will match your gift dollar-for-dollar. Please contact your company's matching gifts coordinator to obtain a matching gift form and determine whether your gift to Congregation Emanu-El can be matched.

Thank you to the following companies for matching our member's donations:





# LIFE-CYCLES

---

## Mazel Tov to Our Members Who Have Experienced Joy

**Alina Katz and Jason Friend** on the birth of their daughter, and **Janie and Donny Friend** on the birth of their granddaughter, **Josephine Leigh Friend**

**Samuel and Jessica Lessin** on the birth of their son, **Maverick Lessin**

**Jorie Waterman and Laurence Jurdem** on the birth of their son, **Elliot Jurdem**

**Elisette Weiss and Jacob Bockelmann** on the birth of their son, **Judah Fleisher Bockelweiss**

**Julie Overdorff** on the birth of her son, **Cole Muir Overdorff**

**Erika and Matthew Warren** on the birth of their daughter, **Elizabeth Warren**

**Rachel and Efrem Bycer** on the birth of their daughter, **Becca Miri Bycer**

**Betty Dvorson** on the birth of her grandson, **Etai Maxwell Fisher**

## Condolences to Our Members Who Have Suffered Recent Losses

**Mark Bloom (Cynthia Vaughn)** on the death of his mother, and **Isaac Bloom** on the death of his grandmother, **Erika Heiss Bloom**

**Alex Buchler (Lora)** on the death of his stepmother, and **Sofia, Rachel, and Benjamin Buchler** on the death of their step-grandmother, **Marlys Buchler**

**Karen Schiller**, Congregation Emanu-El Accounting and Benefits Manager, on the death of her mother, **Bobbi Schiller**

**Sara Osias (Andrew Hanes)** on the death of her grandmother, **Irene Osias**

**Andrew Parker-Rose (Flavio Epstein)** on the death of his mother, and **Carina Rose** on the death of her grandmother, **Arlene Parker**

**Diane Scheiman** on the death of her uncle, and **Ian Scheiman** on the death of his great-uncle, **Franklyn Scheiman**

**Rabbi Sydney Mintz** on the death of her father, **Eli and Gabriel Newbrun-Mintz and Sienna Mintz** on the death of their grandfather, **Arthur Mintz**

**Adam Behrens (Elle)** on the death of his father and **Benjamin and Katherine Behrens** on the death of their grandfather, **Myles Michael Behrens**

**Elizabeth Ozer (Cliff Staton) and Emily Ozer (Tony Fields)** on the death of their father and **Samuel, Max and Emilia Ozer-Staton and Benjamin and Elena Fields** on the death of their grandfather, **Mark Ozer**

## Congratulations to Our Members on Their Achievements

**Rabbi Carla Fenves** on her election to both the board of the Central Conference of American Rabbis and the Jewish Welfare Board

**Alexandra Corvin and Alia Gorkin** on being selected as new board members of the J Weekly

**Aaron Tartakovsky** on receiving the Lloyd R. Sankowich Award for Young Leadership from the American Jewish Committee

**John Rothmann** on his return to a five-day-a-week program on KGO radio

**Vicki Kahn** on receiving the Pam Judd award for tireless volunteer efforts at the Susan G. Komen Visionary Awards Luncheon

**Richard Sax** on receiving the first annual Richard Sax Distinguished Service award from the San Francisco Association of Realtors for his many achievements in the field of real estate and his prolific volunteerism

**Judge Alexandra Gordon** on being appointed to the San Francisco Superior Court

## Welcome New Members! (as of April 10)

Mr. Michael Granat  
Ms. Marissa Klein  
Ms. Vanessa Mambrino  
Mr. Robert Smith  
Ms. Alyssa Taubman

Mr. Ronald Winchell  
Mrs. Barbara Winchell  
Ms. Ellona Yagudayeva  
Mr. Ilya Yusupov

## Welcome Back Rejoined Members!

Eliza Varady  
Nathan Varady

Mr. Eric Varady  
Mrs. Sarah Varady

## Celebrating a Shehecheyanu Moment?

Congregation Emanu-El is a partner in the transitional moments of our members' lives. Be it a baby naming or brit milah, bar or bat mitzvah, conversion or wedding ceremony, or a recovery from illness, the Temple clergy and staff strive to ensure that each sacred "Shehecheyanu Moment" is deeply fulfilling and personal. A donation to the Emanu-El Life-Cycle Fund is a lovely way to mark a personal life-cycle experience, to honor friends or family celebrating a happy milestone or in gratitude for the services, the clergy provide during these profound moments.

Please donate online at [www.emanuelsf.org/donate-now/](http://www.emanuelsf.org/donate-now/) or call the Development office at (415) 750-7554.

# B'NEI MITZVAH

MAY



**Isadora Vermut**  
Bat Mitzvah: May 4  
Parents: Aaron and  
Adriana Vermut  
Torah Portion: *Ahare*



**Tessa Pell and Herschel Pell**  
B'nei Mitzvah: May 4  
Parents: Karen Pell and  
Heather Lupa,  
and Dave and Gina Pell  
Torah Portion: *Ahare*



**Rin Fudenberg**  
Bat Mitzvah: May 11  
Parents: Jay Fudenberg and  
Judith Hayes  
Torah Portion: *Kedoshim*



**Eva Rivitz**  
Bat Mitzvah: May 11  
Parents: Matthew Rivitz and  
Blythe Lang  
Torah Portion: *Kedoshim*



**Tessa Fastiff**  
Bat Mitzvah: May 18  
Parents: Eric Fastiff and  
Rebecca Arons  
Torah Portion: *Emor*



**Alexa Prosnitz**  
Bat Mitzvah: May 18  
Parents: Eric Prosnitz and  
Courtney Klinge  
Torah Portion: *Emor*



**Michael Boussina**  
Bar Mitzvah: May 25  
Parents: Nersi and  
Eileen Boussina  
Torah Portion: *Behar*



**Noah Hirson**  
Bar Mitzvah: May 25  
Parents: Ron and  
Lorie Hirson  
Torah Portion: *Behar*

JUNE



**Marina Keller**  
Bat Mitzvah: June 1  
Parents: Jeffrey and  
Sylvia Keller  
Torah Portion: *Behukkotai*



**Katie Sugar**  
Bat Mitzvah: June 8  
Parents: Brian and Lisa Sugar  
Torah Portion: *Bemidbar*



**Madeleine Frieman**  
Bat Mitzvah: June 8  
Parents: Josh and Dana Frieman  
Torah Portion: *Bemidbar*



**Asher Ballon**  
Bar Mitzvah: June 15  
Parents: Jonathan Ballon and  
Sabra Ballon  
Torah Portion: *Naso*



**Benjamin Haims**  
Bar Mitzvah: June 15  
Parents: Joshua Haims and  
Kendra Haims  
Torah Portion: *Naso*



**Dylan Walsh**  
Bat Mitzvah: June 22  
Parents: Mark Walsh and  
Sabrina Eliasoph  
Torah Portion: *Behaalot'cha*



**Ella Akin**  
Bat Mitzvah: June 22  
Parents: Alexander and  
Tracy Akin  
Torah Portion: *Behaalot'cha*



**Maya and Aliya Dillick**  
B'nei Mitzvah: July 4  
Parents: Steven and  
Stephanie Dillick  
Torah Portion: *Korach*

JULY



Congregation Emanu-El  
Two Lake Street  
San Francisco, CA 94118  
[www.emanuelsf.org](http://www.emanuelsf.org)

**We are a vibrant, sacred Jewish community that is dedicated to advancing our members' lifelong involvement in Judaism through worship, learning, good deeds, and congregant to congregant connections.**

Beth Singer,  
Richard and Rhoda Goldman, *Senior Rabbi*  
Jonathan Singer,  
Richard and Rhoda Goldman, *Senior Rabbi*  
Sydney B. Mintz, *Rabbi*  
Ryan Bauer, *Rabbi*  
Carla Fenves, *Rabbi*  
Jason Rodich, *Rabbi*  
Marsha Attie, *Cantor*  
Arik Luck, Ben and A. Jess Shenson, *Cantor*  
Roslyn Barak, *Senior Cantor Emerita*  
Stephen Pearce, PhD, *Sr. Taube Emanu-El Scholar and Rabbi Emeritus*  
Rabbi Lawrence Kushner, *Emanu-El Scholar*  
David N. Goldman, *Executive Director and General Counsel*  
Terry Kraus, FTA, *Director of Membership Services*  
Elena Gary, *Chief Financial Officer*  
Ariana Estoque, M.Ed, *Director of Adolescent and Adult Education*  
Lom Friedman, *Director of Education*  
Flora Kupferman, *Assistant Director of Youth Education*  
Svetlana Leykin, *Director of Facilities and Special Events*  
Penny Mika, *Director of Operations and Office Administration*  
Julie Weinberg, *Director of Development*  
Byron Gordon, *ChronicleSF Manager*

**Members of the Board of Directors**

Alan Greinetz, President  
Joel Roos, Vice President  
Paul Zarefsky, Vice President  
Sasha Kovriga, Treasurer  
Ellen Fleishhacker, Secretary

Nersi Boussina	Rachel Melman
Dale Boutiette	Paula Pretlow
Sandi Bragar	Rita Semel
Barrett Cohn	Jim Shapiro
Stuart Corvin	Lisa Stern
Jill Einstein	Gunda Trepp
Lara Ettenson	Noah Wintroub
Donny Friend,	Hilary Zarrow
<i>Past President</i>	

*The Temple Chronicle (USPS 023-317) is published monthly except June and July for \$36 per year by The Congregation Emanu-El, Two Lake Street, San Francisco, CA 94118. Periodicals Postage Paid at San Francisco, CA, and at additional mailing offices.*

**POSTMASTER:** Send address changes to *The Temple Chronicle* at Congregation Emanu-El, Two Lake Street, San Francisco, CA 94118.

PERIODICAL

*Celebrate Israel*

SAVE THE DATE

CELEBRATE ISRAEL WITH KOOLULAM

*Sunday, June 2, 3:00 pm, Temple Emanu-El*

In an experience you'll never forget, join hundreds of voices raised together in song, for a memorable afternoon of commonality, sharing, and celebration.

WATCH YOUR INBOX. DETAILS COMING SOON!