

Emanu-El ^S_F

CHRONICLE VOLUME CLXXIII, NO. 25 | FEBRUARY 2020 | 6 SH'VAT - 4 ADAR 5780



Assaf Wand
Hippo Insurance



Yonatan Weintraub
Space IL



Shani Yossefon
iAngels

Entrepreneurial Chutzpah!

February 12

FEB **23**
**Antisemitism
Panel**



MAR **17**
**TAUBER SPARK
Ignite Your
Jewish
Learning**

SAVE THE DATE

Mark Your Calendars for our 4th Annual Tauber SPARK Program:

Allow yourself to dive into our tradition and SPARK your imagination!

We want EVERYONE to take part in this innovative community-wide Jewish learning experience. Let your heart be moved by Torah; be open to a transformative and mind expanding experience. Join your friends, Rabbis, and guest teachers for three nights of SPARK, a powerful Jewish learning offering of Congregation Emanu-El.



Our evening will begin with schmooze time for participants to mingle and nosh together, followed by an hour engaged in one of four hot-topic SPARK study sessions with Rabbis and leading guest educators. The evening will be followed by a community-wide keynote address with special scholars/speakers.

TAUBER SPARK 2020

March 17, 24, and 31, 6:45 – 9:15 pm

Cost: \$40 for members; \$50 for non-members

Educators will include: Rabbi Lee Bycel, Randi Reed from Keshet, Prof Aaron Hahn Tapper, Prof Ken Cohen, Prof Fred Astren, and Auritte Cohen-Ross.



Shabbat Calendar FEBRUARY

Saturday, February 1

10:30 am, Shabbat
Morning Service
(Main Sanctuary)
10:30 am, Shabbat
Morning Service
(Martin Meyer Sanctuary)

Friday, February 7

5:30 pm, First Friday Under
Five Shabbat Service
(Martin Meyer Sanctuary)
6:00 pm, One Shabbat Service
(Martin Meyer Sanctuary)

Saturday, February 8

10:30 am, Shabbat
Morning Service
(Martin Meyer Sanctuary)

Friday, February 14

6:00 pm, One Shabbat Service
(Martin Meyer Sanctuary)
8:30 pm, Young Adult Late
Shabbat Service
(Main Sanctuary)

Saturday, February 15

10:30 am, Shabbat
Morning Service
(Main Sanctuary)
10:30 am, Shabbat
Morning Service
(Martin Meyer Sanctuary)

Friday, February 21

6:00 pm, One Shabbat Service
(Martin Meyer Sanctuary)

Saturday, February 22

10:30 am, Shabbat
Morning Service
(Main Sanctuary)

Friday, February 28

6:00 pm, One Shabbat Service
(Martin Meyer Sanctuary)

Saturday, February 29

10:30 am, Shabbat
Morning Service
(Main Sanctuary)
10:30 am, Shabbat
Morning Service
(Martin Meyer Sanctuary)

SHALOM RAV FROM OUR RABBI

By Richard and Rhoda Goldman Senior Rabbi Jonathan Singer

As I write this, thousands of people are walking across the Brooklyn Bridge in solidarity against anti-Semitism and hatred in all of its forms. The march is an important public statement that the Jewish community will not be intimidated by those who hate us, and that we do not stand alone against the vile rearing of prejudice that is a stain on the American psyche. We in San Francisco cannot be naive when it comes to recognizing its resurgence and that we must continue to be vigilant in countering it.

Rabbi Nachman of Bratzlav is famous for teaching that the whole world is a narrow bridge, but the essence is not to be afraid. To me, this teaching reminds me to respond to such hatred not from a stance of fear, but from one of courage and inner strength. If we stand together as Jewish people with our natural communal partners, we have the capacity to push back at this scourge in a way that few communities in Jewish history have been able to do.

Standing together includes working across the Jewish community as partners with all expressions of Judaism.

We must give our absolute support to our Hasidic brothers and sisters as their outward appearance as Jews makes them targets. We support their right as Americans to purchase property, congregate in neighborhoods, and not be treated with nonsensical expressions of hatred that argue their existence as a threat to others. As a Jewish community, we represent less than 2 percent of the entire American population, and Hasidic (as well as other Orthodox) Jews account for only 20 percent, at most, of our Jewish population. Hasidim are a threat to no one, and America must know that we Reform Jews enthusiastically support their right to practice Judaism as they see fit.

Standing together also means acknowledging that anti-Zionism is anti-Semitism. We Rabbis are enthusiastic supporters of the State of Israel. At the same time, we can criticize that country, which we love, because we want it to be a "light unto the nations." It is one thing to critique

a country; it is another to deny its right to exist. Zionism is the national expression of the Jewish people and we have the right to that expression. To argue otherwise is to deny Jewish history and identity. It is essential that we speak out against anti-Semitism masked as anti-Zionism and be unafraid to challenge those with whom we might otherwise agree with politically and socially.

As Rabbi Nachman taught, let us not be afraid, but rather let us counter this hatred directly. We can do so by publicly celebrating our Jewish identity, by reaching out to the larger community to stand against all forms of hate, by building coalitions with people who embrace love and see the holy in all people, and by demanding that not just the government and officers of the law stand up against anti-Semitism, but that good people everywhere join with us. Here at Emanu-El, you will see more programming and events in the coming months as we discuss how to stand up against hate and encourage each other to participate in and find meaning in Jewish life. It is a sacred task that we have been given as part of the Jewish journey: to cast the light of hope and love into the world when others would try to embrace darkness!



JANUARY **21** – MARCH **11**

See voting instructions on page 5.

ISRAEL ACTION PROGRAMS

The Israel Action Committee's goal is to increase the engagement of our congregation with the State of Israel through education, celebration, and involvement. The committee will present Israel-related programs to the congregation, covering political, social, economic, and religious topics. Our Israel Action Committee is committed to creating an atmosphere in which our members can engage passionately and respectfully about their views, perspectives, hopes, and dreams for the State of Israel.

Entrepreneurial Chutzpah

Wednesday, February 12 | 7:00 pm | Martin Meyer Sanctuary



Assaf Wand
Hippo Insurance

Yonatan Weintraub
SpacEL

Shani Yossefon
iAngels

The Israeli innovation ecosystem has given rise to a unique environment, within which the Israeli entrepreneur flourishes and thrives. With a population of just 8 million, Israel has the highest concentration of start-ups per capita worldwide and is raising generations of entrepreneurs who are disrupting markets around the globe and bringing change to the world.

Hear from three leading Israeli pioneers who, together are reshaping industries and rewriting the rules, featuring: **Shani Yossefon of iAngels, Assaf Wand of Hippo Insurance, and Yonatan Weintraub of SpacEL**

- Assaf Wand is the co-founder and CEO of insurtech startup Hippo. Based in Palo Alto, CA, Hippo has reimagined home insurance through the lens of homeowners – building policies with more comprehensive coverage for today's consumers at up to 25% less than competitors. The high-growth company is valued at more than \$1B, and has expanded its footprint to offer products to more than half of the US homeowner population in less than 2 years. Prior to Hippo, Wand was founder and CEO of Sabi, which designed and produced elegant everyday products (Sabi was acquired in 2015), a consultant with McKinsey & Company and an investor with Intel Capital.
- Yonatan Weintraub is co-founder of SpacEL, a \$100M Israeli non-profit organization that attempted to land Beresheet, the first private interplanetary robotic mission, on the moon on April 11, 2019. This historic achievement made Israel one of only seven countries to orbit the moon and reach the lunar surface. SpacEL is currently planning its next mission into space. Yonatan has spoken about space technology and radical shifts in the space industry to audiences all over the world. He is currently a PhD candidate and Bio-X Bowes fellow in Biophysics at Stanford University where he is studying a method to interpret and intercept cancer cell communication.
- Shani Yossefon is a former Personal Assistant to the Office of the Israeli Prime Minister, procurement financial analyst, and controller of the Israeli Ministry of Defense in New York, and RM Global business development manager, and she led the iAngels iNgenuity fund business development and strategic partnering activities. She is an experienced business development professional with global experience, bringing Israeli portfolio companies and funds to the attention of Limited Partnerships, family offices and corporate co-investors in North America, Europe, and Asia – in diverse technology sectors.

To register, please visit: emanuelsf.org/learning/israel-experiences/
If you have questions, please contact Ariana Estoque at aestoque@emanuelsf.org



What does Emanu-El mean to you?

An invitation to participate in a Membership Committee project.

The Emanu-El Membership Committee is undertaking a project to articulate the meaning of membership to our congregants. We are seeking a diverse group of congregant volunteers to take part in this effort, beginning early this year. The Membership Committee will convene a series of discussions about the meaning of membership, culminating in a set of messages for use in Emanu-El's various public channels (e.g., brochures, website, social media, talking points). Volunteers may also be asked to provide feedback on written products. The volunteer time commitment will be no more than 8 to 12 hours spread out over several months. Input gathered through this process will also be used to shape outreach and member engagement efforts in 2020 and beyond. We welcome all members' thoughts and experiences as part of this process.

If you are interested in volunteering to participate in this project, please send a brief paragraph describing



your interest and noting which Emanu-El communities (e.g., LGBTQ, preschool parent, retired, young adult) you are a part of. Please submit your statement via email to membership@emanuelsf.org no later than February 15. Let us know if you have any questions or feedback.

Thank you in advance for sharing your thoughts about what Emanu-El means to you!

US ELECTION FOR 38TH WORLD ZIONIST CONGRESS REGISTRATION & VOTING INSTRUCTIONS

STEP 1

Go to: www.ZionistElection.org and click on the 'Register & Vote' button.

STEP 2

The registration form will now appear on your screen. Please fill out all the required information, then click 'Submit.'

STEP 3

A form asking for a verification number will now appear on your screen. Retrieve your verification number in your email or by text message. Enter the verification code and hit 'Submit.'

STEP 4

A payment page will then appear. Select your method of payment and complete the payment section. Once you have entered in your payment information click 'Submit.' The acceptable payment methods are: American Express, Visa, Mastercard, Discover, PayPal, Apple Pay, Google Pay, Debit Card, ACH/e-check, personal check (for paper ballots* only).

**Paper ballots are available at www.azm.org/elections.*

STEP 5

You are now ready to vote for the Reform Slate!

You will be asked to provide your email address and a 'Voting PIN Code.' You can retrieve your 'Voting PIN Code' by text message or email. Enter the information and click 'Submit.'

STEP 6

Select the "Vote Reform: ARZA Representing the Reform Movement and Reconstructing Judaism" option! We will be listed 2nd on the ballot. Choose only one Slate. Click the 'Submit' button to confirm you are voting for the slate you want and click the 'Vote' button.

AFTER YOU HAVE VOTED

Once you receive a confirmation email, spread the word!

- Share that you have voted with family and friends.
- Post on social media with the hashtag #VoteReformWZC.
- Change your Facebook profile to "I Voted Reform" frame.

If you are on the slate, you will receive your Voting Pin on January 21st.

**YOU HAVE NOW VOTED FOR THE REFORM SLATE IN THE WORLD ZIONIST CONGRESS ELECTION!
THANK YOU!**



YOUTH & FAMILY EDUCATION (YFE)

Sometimes February doesn't get a lot of credit on our calendars or in our minds. Compared to the start of the school year, candy-themed holidays, big family meals or vacations, February can be seen as short and boring (even with the extra day this leap year). But looking at the Jewish calendar can make it more interesting!

The Jewish calendar flows on a lunar cycle, starting each month on the new moon. Holidays are often timed with the full moon, and in some years we get a full "leap month" (but not this year). This year, February starts in the Jewish month of Shevat and ends in Adar. The holiday Tu B'Shvat (literally translated to mean the 15th of Shevat) is the birthday of trees and a great time to plant a little parsley in your window to be ready in time for your Passover seder. On this date, the sun sets at 5:41 pm in San Francisco, almost an hour later than it did seven weeks earlier on the winter solstice. Thus, it is fitting that Tu B'Shvat marks the thawing of winter, the beginning of sap moving in the trees again, and a good time to start dreaming of spring. Just six weeks until the spring equinox, it is a wonderful time for hope and looking forward! Pop outside late on **February 9 to greet the Tu B'Shvat full moon.**

And mark your calendars for the next full moon in March because it brings one of the biggest Emanu-El events of the year: the **annual Shushan Bazaar on Sunday, March 8!** Coordinated by two amazing congregants, Jamie Rose and Julie Ugar, of Flair Event Design + Planning, this family-fun afternoon takes over the courtyard and multiple floors to bring you food, music, face painting, animal shows, carnival games, contests, costumes, and more! And the musical Purim spiel, starring our talented clergy and congregants, is always a show stopper. There is something for every age and a way for everyone to get involved. **If you can help make goodies for our bake sale or can be our bake sale chairperson, please contact Shanah at skushner@emanuelsf.org.**

Meanwhile, look forward to all of the upcoming YFE highlights in the coming months.

Lom Friedman
YFE Education Director

Upcoming YFE Highlights

February (Shevat/Adar)

- Special cantor's program with Sunday 5th-graders begins
- 8th-grade trip to Los Angeles
- Kindergarten and Pre-K Sunday Family Days
- YFE Family Shabbat Dinner
- 12th-grade trip to Washington D.C.

March (Adar/Nissan)

- Purim Bazaar
- YFE Wednesday Purim Megillah party
- 10th-grade trip to New York City
- 6th-grade student retreat at Nature Bridge
- 3rd- and 4th-grade Sunday Family Days
- YFE Family Shabbat Dinner

April (Nissan/Iyar)

- Pesach
- 2nd-grade Sunday Family Day
- Last day of Wednesday YFE Celebration

May (Iyar/Sivan)

- Last day of Sunday YFE Celebration
- Last day of TEF
- Last 6th-grade Family Shabbat Experience
- Communitywide Israel Party — including food, games, international entertainment, and more!
- Final YFE Family Shabbat Dinner of 5780
- 12th-grade Confirmation

Antisemitism 2020 – A Threat to American Jewish Identity

**Sunday, February 23, 2:00 – 4:00 pm,
Martin Meyer Sanctuary**

Bomb threats, broken windows, and swastikas... Attacks against Jews in the United States and our own Bay Area have reached a level that nobody would have thought possible. What does it mean when Jewish people are no longer safe? Will the next generation start hiding their Judaism? What can be done and how do we make that change?

Discuss these questions with three experts who have been instrumental in fighting the latest threats toward our community: Seth Brysk, ADL Central Pacific Regional Director; Serena Eisenberg, Bay Area Director of the AJC; and Aliza Cramer Elias, Director of the Institute for Curriculum Services.



Aliza Cramer
*Director of the Institute
for Curriculum Services*



Seth Brysk
*ADL Central Pacific
Regional Director*



Serena Eisenberg
*Bay Area Director of the
AJC*

Torah Learning and Socializing



One Wednesday a month, join either of these no-host learning events in your area where a member of clergy will lead a one-hour text study and discussion around a topic of their choice. Just drop in and enjoy!

Brown Bag

Wednesday, February 5, noon – 1:00 pm,
Emanu-El 4th Floor Library

Limonata and Learning

Wednesday, February 12, 4:00 – 5:00 pm, Book Passage,
51 Tamal Vista Blvd., Corte Madera

Keeping the Judiciary Independent

**Sunday, February 2
9:30 – 11:00 am**

Main Sanctuary

Charles Benjamin Schudson is a Wisconsin Judge Emeritus and professor of law. A former prosecutor, trial and appellate judge, and Fulbright Scholar, Judge Schudson understands judicial decision-making. In his book, *Independence Corrupted: How America's Judges Make Their Decisions*, he examines the pressures impinging on judicial integrity. With scholarship and impassioned accounts of compelling cases, he opens the doors to appellate chambers to hear judges debating life and death, multi-million-dollar damages, and priceless civil rights.

He served as a state and federal prosecutor (1975-1982), a Wisconsin Circuit Court Judge (1982-1992), a Wisconsin Court of Appeals Judge (1992-2004), Senior Counsel at von Briesen & Roper, s.c. (2004- 2006), and General Counsel of La Causa, Inc. (2006-2009).

*This lecture is made possible by the generosity of the
Rabbi Joseph Asher Lecture Fund.*



COMMUNITY ENGAGEMENT

As a large congregation, we recognize the importance of small group connection, so we create many opportunities for learning, socializing, and enjoying local culture together. Refer to the Community or Social Justice pages on our website for more information and staff contact information. Remember to register online in the MyEmanu-El portal for all of these programs (unless otherwise noted below) so we know to expect you.

Your Community Engagement Team:

Randi Fields

Senior Director of Membership and Engagement Operations
(rfields@emanuelsf.org, x119)

Rabbi Sarah Joselow Parris

Director of Congregational Engagement
(sparris@emanuelsf.org, x124)

Ariana Estoque

Director of Member Experience
(aestoque@emanuelsf.org, x111)

Leah Shapiro

Senior Engagement Associate
(lshapiro@emanuelsf.org, x136)

Georgina Garcia

Front Desk Officer
(ggarcia@emanuelsf.org, x0)

Rebecca Reiner

Community Engagement Coordinator & Assistant to Rabbi Bauer
(rreiner@emanuelsf.org, x170)

Ann Jackson

Membership and Engagement Assistant
(ajackson@emanuelsf.org, X138)

CONGREGANT GATHERINGS

Weekday Activities at the Temple—choose one or more and participate!

Cooking for Congregants

Thursdays, February 6, 13, and 27,

*9:00 – 11:00 am,
Emanu-El Kitchen*

No charge.

Be one of two volunteers, under the guidance of former restaurant owner Gail Laghi and chef Sari Swig, helping to make meals for congregants in need. New participants are

always welcome. Registration is required on the Temple website by the Tuesday before cooking day. Questions? Contact Rebecca Reiner at (415) 751 2534 x170.

Here's just one of many expressions of appreciation:

"Thank you so much. Sari just dropped off a week's worth of meals for my family and me. I can't tell you how surprised I am by this generosity. Please let the Cooking for Congregants team know that I am so grateful for this lovely gift. With lots of gratitude."

Volunteer slots are limited due to the layout of our kitchen, but you can still help by calling the Temple office if you learn of a congregant who is grieving or ill or has become a new parent. (By law, hospitals will not release patient information, so clergy and staff rely on YOU to enable us to reach out.)



The Stories of Your Life: Guided Autobiography and Life Review Writing

Mondays, 10:00 am – noon, Room 53

No charge.

This is a great opportunity for self-reflection and the chance to tell your unique story while also getting to know other warm and wonderful members of our congregation. Join this friendly group that meets monthly to share stories on assigned themes. It's about the story, so no writing experience is necessary. New participants are always welcome! Online registration is required. For more information, contact group facilitator Nancy Alpert, LCSW at nalpo@igc.org.



Scrabble

*Mondays (except when the Temple is closed),
11:00 am – 3:00 pm, 5th floor*

No charge; drop in.

Do you enjoy the challenge of putting letters together to form words? Join our Scrabble group and play a rousing game or two! Expand your vocabulary along with your social circle. Bring a Scrabble set (optional) and, of course, your appreciation of words. All ages and experience levels are invited!



Bridge Club – Lessons and Game

*Tuesdays, February 11 and 25, 10:00 am – noon
Rinder Chapel*

*Cost: \$20 for members; \$25 for friends of members
Drop in.*

If you are beyond the level of novice, join this very popular and lively group for duplicate-style bridge. Play while improving your game. Certified bridge instructor and American Contract Bridge League champion Deborah Murphy is the instructor.

*Save the following dates for Bridge Club in 2020:
March 10 & 24; April 14 & 28; May 12 & 26; and June 9.*



Baby Group Available!

Bagels and Babies

*Mondays and Fridays, 9:30 – 11:00 am
Martin Meyer Reception*

*Cost: FREE for members; \$10/session for non-members
(first session free)*

Drop in with your little one (birth to 2 years) and spend time with other parents. Join us as we prepare to welcome Shabbat on Fridays and celebrate Havdalah on Mondays. Enjoy music, stories, puppets, and more with Early Childhood Educator Mimi Greisman. Take advantage of a wonderful opportunity to connect with other parents and create lasting friendships.

COMMUNITY GROUP EVENTS

Young Families Tu B'Shvat Havdalah in the Park

*Saturday, February 8, 4:00 pm
Mountain Lake Park picnic area*

No charge.

Young families with children ages 5 and under, please join us for a special Tu B'Shvat Havdalah popup with Jonathan Bayer and Rabbi Fenves! This event is presented in partnership with the Jewish Baby Network.



Photo Courtesy USF Athletics-Christina Leung

Jewish Heritage Night at University of San Francisco (USF)

*Saturday, February 22, 3:00 pm
USF War Memorial Gym*

Cost: \$15 per person (adult/youth)

Come cheer for our local USF team with your Emanu-El community! We'll be sitting together as the SF Dons play the Pepperdine Waves. This is a family-friendly, fun way to enjoy a Shabbat afternoon!

The Tribe for Men

This month, we encourage Tribe for Men families to join other Emanu-El families at the USF basketball game on Saturday, February 22. Some of you heard Todd Golden, USF Dons' head coach, speak in November. Now you can see him in action on the court! *Please see the "Jewish Heritage Night at USF" event description above for more details.*

More Group Events on next page

COMMUNITY ENGAGEMENT *(cont'd.)*

Men's Group

February 23, 9:30 – 11:30 am,
location provided upon
online registration

Men of Congregation Emanu-El have a monthly opportunity to socialize and study with a member of the clergy at a private home. This cross-generational group provides a small group experience so important to building community.

Men's Group events are congregant only and require registration. All events are from 9:30 to 11:30 am, unless otherwise noted. If you have questions, contact Rebecca Reiner at reiner@emanuelsf.org or (415) 751-2534 x170.

Thanks to a donation from a member of the Men's Group, the majority of gatherings are now offered for free.



Learners Shabbat Service

A parallel service to our regular One Shabbat service.
Friday, February 28, 6:00 pm, Rinder Chapel

Would you like to learn the basics of what happens at a Shabbat service? All are welcome to join Cantor Arik Luck and Rabbi Jason Rodich for a learning service. We will walk through the Friday night Shabbat liturgy step by step, with plenty of time for questions. This service will take place in the Chapel and will be followed by a Shabbat dinner in Guild Hall.

Registration (on our website) is required for both the service and dinner. Babysitting is available upon request; please contact Ariana Estoque at aestoque@emanuelsf.org or (415) 750-7552.

Please note that our regular Friday night Shabbat service will still take place at 6:00 pm, including the reading of the Kaddish list.

This event is sponsored by Interfaith Families and the Introduction to Judaism class.



The Tribe For Women: Beginners Mahjong Night

Wednesday, February 26, 6:00 pm
Emanu-El Chapel

Cost: \$50 per person

BAM! CRACK! DOT! Calling all beginners who want to learn the game! Join this three hour session of mahjong lessons, taught by experienced players and mahjong aficionados. Your \$50 goes toward a light nosh, wine, and a new mahjong card of your own. This is a compressed lesson that is normally taught over two nights, so please be prompt and ready to learn.

There will be a mahjong night (no lessons) at a congregant's home in March, so stay tuned for this upcoming chance to practice your new skills!



Side By Side

Tuesdays and Thursdays, 9:30 – 11:30 am

Cost: \$360 for members; \$485 for non-members

Emanu-El's Side by Side program introduces our youngest children (18 months to 2.5 years) to a preschool environment with their parent or caregiver by their side. Our Side by Side program is rich in Jewish content, celebrating Jewish traditions and holidays. This program is a wonderful introduction to preschool that deepens relationships in our community and launches a meaningful beginning to the school experience for both parents and children.

There are two sessions per week for 8 weeks (16 total sessions). Register now for the winter 2020 program by contacting Katie Saleh, Administrative Coordinator, via email at KSaleh@emanuelsf.org!

TZEDEK COUNCIL

Dinners at Geary House

Sundays, 5:00 – 7:00 pm

Sponsor a Sunday night dinner for homeless youth: Cook, eat, and socialize with residents of Geary House, a transitional housing program of Larkin Street Youth Services.



Geary House, run by Larkin Street Youth Services, is a 20-bed housing program for San Francisco homeless young adults (ages 18-24) who are transitioning from adolescence to adulthood. Geary House provides residents with tools to remove obstacles in their life that threaten a successful transition to independent living. Emanu-El has partnered with Geary House to support the youth integrating into the community by bringing volunteers on Sunday evenings to cook, eat, and build meaningful relationships with the residents.

2nd Annual Light of Giving

Thank you to those who supported the Tzedek Council's 2nd Annual Chanukah Light of Giving on Sunday, December 15, helping to relieve financial stress for expectant mothers experiencing poverty and homelessness in our community. Together, over 150 congregants rolled up their sleeves and performed the mitzvot of tikkun olam, unpacking over 100 boxes and assembling 150 "mazel tov" bags, full of essential items for new mothers at the Homeless Prenatal Program. The next morning, we donated the bags, along with car seat stroller combos and infant portable cribs. We are overwhelmed by the incredible support of our congregation and community. Many thanks for bringing light to the Homeless Prenatal Program during this holiday season!



Congregation Emanu-El Won the Irving J. Fain Award in 2019!



We are thrilled and proud that Congregation Emanu-El's Tzedek Council earned national Recognition from the Reform Movement for our work addressing the youth homeless crisis in San Francisco by winning the Union for Reform Judaism's (URJ) 2019 Irving J. Fain Award!

This biennial award was given to URJ congregations doing exemplary work to bring about a world filled with justice, compassion, and wholeness. This past year, our Tzedek Council set out to galvanize the congregation around serving youth experiencing homelessness in partnership with Larkin Street Youth Services, a nonprofit that empowers young people to move beyond homelessness and is a part of San Francisco's Rising Up Campaign, a public-private partnership aiming to cut youth homelessness in half by 2022.

Our goal was to show that we stand with the vulnerable population of youth struggling in San Francisco, while also building community. To engage more congregants in social justice, our Tzedek Council decided to leverage existing group gatherings, services, or holidays to ensure that justice is woven throughout ongoing opportunities and to make it easier for congregants to participate. For Geary House—a 20-bed housing program run by Larkin Street that provides tools to young adults to live healthy, stable lives—the intended impact was to ensure a consistent and ongoing volunteer base for Sunday night dinners, build relationships, and be a long-term partner.

For congregant groups and drives, the intended impact was to make social justice an integral part of all groups, provide support to Larkin Street Youth Services, and expand congregant participation. All of these efforts in pursuit of tikkun olam would not be possible without each and every one of you in our community volunteering, planning, supporting, and/or donating. We can't wait to see all that we will accomplish together this year!

DONORS

Thank you to all of our donors. The following gifts were received from October 1, 2019 – November 30 2019.

GENERAL FUND — used where the need is greatest at the Temple

Anonymous (2)
Repair the World
in memory of Zora Gropper
Alex & Lora Buchler
Peter Colichidas
Lawrence Edelstein
Chelsea Eng
Kathie & Russell Eng
Regina Grogan
David Gumpert
in honor of Bennett Wintroub's Bat Mitzvah
Sharon Kaplan (2)
in memory of Martin Schneider & Carlos Archbold
Joshua Kazdin
Jamie & Andrea Lieberman
David Melnick
in memory of Paul Matzger
Victor & Alla Mezhvinsky
Allan Paul
Frana Price & Rick Ohlrich
in honor of the retirement of Terry Kraus
Laura Salzman
in observance of the Yahrzeits of Julius Salzman and Harry Rubino
Jeanne Sassoon
in memory of Dr. Raymond Weisberg
Edward & Lynne Segal
in appreciation of Roselyn Swig
Sandra Shrier & Jason Levy
Mary Ann Tonkin (2)
in observance of the Yahrzeit of Bert Tonkin
Sands Tucker
in honor of Ariana Estoque
Lawrence & Caroline Werboff
in honor of Evyn Zell and Brian Groner's birthdays
Lisa & Alex Yakubovich
in appreciation of Rabbi Carla Fenves

FLOWERS FOR THE BIMA — listing are included here

Joshua Hoffman & Kathryn Morris
in honor of Isaac's Bar Mitzvah
Jamie & Rory Weinstein
in honor of Michael's Bar Mitzvah
CANTORS' MUSIC FUND — supports the Congregation's music programs and is used for charitable giving at the Cantors' discretion
Camille Angel & Wendy Brummer
in honor of Cantor Marsha Attie
Leslie Friedman & Jonathan Clark
in observance of the Yahrzeit of Sterling M. Friedman
Sean Krausz & Courtney Lentz
in honor of Cantor Marsha Attie
Stuart & Yvonne Lasher
Vladimir Trilesskiy & Svetlana Kristal
in memory of Yuri Kristal
Jamie & Rory Weinstein
in honor of Michael's Bar Mitzvah
EMANU-EL COMMUNITY SERVICE FUND — promotes and supports social action and community service programs
Gayl & Samuel Suede
in honor of Michael Weinstein's Bar Mitzvah
Charles & Lenore Bleadon (2)
in celebration of Lynn Altshuler's birthday
Deborah & Craig Hoffman
in appreciation of Sandra & Conrad
Scott & Vicki Kahn
in honor of Rabbi Ryan Bauer being honored by Hamilton House
Aramie & Kevin McDonald
Andrea & Lester Samuels
in honor of Michael Weinstein's Bar Mitzvah

FOOD PANTRY — supports the Healthy Children Pantry at Roosevelt Middle School

Eve Heyman
Stephanie Scott (2)
in celebration of Ariana Estoque's birthday
Stephanie Scott
in honor of Ariana Estoque's new position
Stephanie Scott
in memory of Jerry Rodstein
Stephanie Scott (2)
in honor of Rabbi Sydney Mintz
EMANU-EL LIFE-CYCLE FUND — enables all congregants to celebrate significant milestones, regardless of economic circumstances
Cyndi Weingard
in appreciation of Rabbi Carla Fenves
Joshua Hoffman & Kathryn Morris
in honor of Isaac's Bar Mitzvah
Paul Nock
in memory of Jennifer Nock
Jamie & Rory Weinstein
in honor of Michael's Bar Mitzvah
EMANU-EL PRESCHOOL FUND — provides scholarships and support for our Preschool
Amy & Harish Abbott
Caren Alpert
Adam & Dawnelle Behrens
in observance of the Yahrzeit of Myles Behrens MD
Deirdre & Darryl Bosa
Nersi & Eileen Boussina
Michael & Jenna Duboe
Steven & Elyse Eisenberg
in memory of Gabe Eisenberg
Lindsey & Akiva Felt
Rabbi Carla Fenves & Cantor David Frommer
William Goldfarb & Heidi Adams
Alia & Travis Gorkin
Judith Hellman

Krishna & Kaliki Kantheti

Allyson & Matthew Kaufman

Alex Litvak & Lyuba Traub

Daniel Myers & Wendy Nguyen

Jill Nisson & Herk Confer

Gabrielle Ohayon & Lev Kushner

Julie Overdorff

Maxine & Justin Raphael

Jeffrey Rosenfeld & Andrew Snavely

Fred Salan & Toni Barba-Salan

Jennifer Saslaw & Max Simkoff

Ian & Laura Sherr

Joseph Smolen & Kaitlin Solimine

Melanie & Jeremy Solomon

Aaron Steinberger & Marissa Ryan

Rebecca & Eric Stone

Lauren Weitzman & Bruce Falck

**ONEG SHABBAT AND
KIDDISH SPONSORSHIP FUND —
provides for the weekly
Shabbat Oneg, Kiddush, and other
congregational receptions**

Gregor & Annika Ehrlich

*in honor of Loden's Bar Mitzvah and
in memory of his Grandmother
Harriet Epstsein*

Joshua Hoffman & Kathryn Morris

in honor of Isaac's Bar Mitzvah

Sarah & Eric Nusinow

in honor of Samantha's baby naming

Karen Solomon & Matthew Schaefer

in honor of Emmett's Bar Mitzvah

Michelle Tandler

Jamie & Rory Weinstein

in honor of Michael's Bar Mitzvah

**RABBIS' DISCRETIONARY FUND
— used for charitable giving at the
Rabbis' discretion**

Sinai Memorial

in honor of Rabbi Jonathan Singer

Joe Goldman

in appreciation of Rabbi Jason Rodich

Jennifer Ehrlich & Alex Cohen

in appreciation of Rabbi Carla Fenves

Leo Fuchs & Lauren Goldman

in appreciation of Rabbi Beth Singer

Irvin Gardner

in honor of Rabbi Stephen Pearce

Steven Katznelson & Trudy Edelson

in honor of Rabbi Beth Singer

Sean Krausz & Courtney Lentz

in honor of Rabbi Jason Rodich

David Kremer & Marla Miller

*in observance of the Yahrzeit of
Arnold Miller*

Barbara Marshall

in memory of Felix Warburg

Cindy Morris

in honor of Rabbi Ryan Bauer

Letty Morris

in honor of Rabbi Ryan Bauer

Donald Pino

in honor of Rabbi Jonathan Singer

Claire Richker

*in honor of Rabbi Ryan Bauer marrying
Marissa & Stuart Corvin*

Albert Villa (2)

Jamie & Rory Weinstein

in honor of Michael's Bar Mitzvah

Donald & Barbara Zale

in honor of Rabbi Carla Fenves

**YOUTH EDUCATION FUND —
supports special programming and
materials for the Youth and Family
Education Program**

Heather Copley

in memory of Bill Scott

Stuart Levy

in honor of Ella Kowal

David & Heather Coffman

*in appreciation of Marilyn's contribution
to YFE Hebrew*

Sarah Stein & Michael Cohn

OTHER CONTRIBUTIONS

Barrett & Tria Cohn

*to support the 20th Anniversary
Late Shabbat*

Dana Corvin & Harris Weinberg

*to support the Membership/Engagement
Oneg*

Noah & Carey Wintroub

*to support the 20th Anniversary
Late Shabbat*

Shelley Friedman & Tania Lowenthal

to support the music for Late Shabbat

Jason Friend & Alina Katz

*to support the 20th Anniversary Late
Shabbat in honor of Rabbi Sydney Mintz*

Jewish Community Federation

*to support the student debt relief
program*

Gary Rabkin

*to support the 20th Anniversary
Late Shabbat*

LIFE-CYCLES

Condolences to Our Members Who Have Suffered Recent Losses

Ann Roher (Martin) on the death of her brother, Michael Moosman

Eric Starr (Gayle) on the death of his father, and **Daniel Starr** on the death of his grandfather, Marvin B. Starr

Ruth Stein on the death of her daughter, Jennifer Boyd

Ruth Heller on the death of her husband, **Miranda Heller (Mark Salkind)** and **Anne Anderson (Lee)** on the death of their father, and **Kendall and Brook Anderson** and **Nathan and Haley Tone** on the death of their grandfather, Alfred Heller

Dr. Martin and Edis Robinson on the death of their daughter, Diane Hendricks

Anne Vollen (Gary) on the death of her nephew, and **Jacob and Daisy Vollen** on the death of their cousin, Paul Benton Fisher-York

Jared Boigon (Kimberly) on the death of his cousin, Michael Singer

Our community mourns the loss of **Lois Jamart**

New Members

Derek Barnes
Landon Clark
Jacob Colvin
Jeffrey Dastin
Gabriel Demello
Edwiges Demello
Claudia Guedes
Alison Harrigan

Edward Hiscox
Misha Kestler
Beatrice Mazzola
Ludovico Mazzola
Alex Nichamin
Scott Siegel
Zoe Siegel-Clark

Rejoined Members

Bernard Fain
Kari Simpson Fain
Lilah Fain
Geri Hershman
Rabbi Morris Hershman
Lana Horowitz
Jeffrey Horowitz

Arielle Sunshine
Lara Sunshine
Paul Sunshine
Henri Weil
Julia Weil
Bertil Weil

DEVELOPMENT

Donate Online!

Making a contribution to Emanu-El is a meaningful way to honor friends and family while supporting the synagogue. Please visit our website (www.emanuelsf.org/support-us/), select "Donate Now or Annual Giving," and follow the steps to make a gift. You will receive an electronic confirmation, followed by an acknowledgment letter in the mail. If you need assistance, contact Shelby David in the Development Office at sdavid@emanuelsf.org or (415) 751-2541 ext. 177.

Appreciated Stock Gifts

Did you know that you could make charitable gifts—including your Emanu-El Membership Dues and Impact Fund gifts—by donating your appreciated stock? This is a great way to avoid capital gains taxes while supporting the congregation.

If you are making a stock gift, please use the following information:

First Republic Securities Co, LLC
Account Name: Congregation Emanu-El
For Further Credit to Account Number: 33L064574
Clearing Firm: Pershing LLC
Pershing LLC DTC# 0443

Note: Please make the Development Office aware of your stock gift before it is transferred so your donation can be tracked and appropriately directed as you wish. Email Shelby David at sdavid@emanuelsf.org or call (415) 751-2541 ext. 177.

Corporate Matching

Many Bay Area companies will match your gift dollar-for-dollar. Please contact your company's matching gifts coordinator to obtain a matching gift form and determine whether your gift to Congregation Emanu-El can be matched.

Thank you to the following companies for matching our members' donations.



Google

BLACKROCK

Deloitte



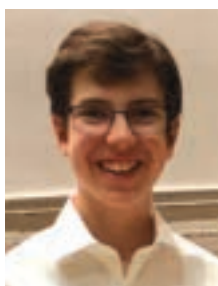
VISA



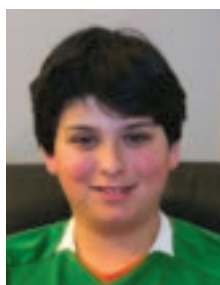
B'NEI MITZVAH



Laney Segal
Bat Mitzvah:
 February 1, 2020
Parents:
 Ned and Maya Segal
Torah Portion:
Bo



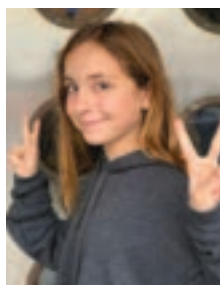
Scott Jacoby
Bar Mitzvah:
 February 15, 2020
Parents:
 Vanessa and Alison Jacoby
Torah Portion:
Yitro



Mason Bellonzi
Bar Mitzvah:
 February 1, 2020
Parents:
 Beverly Brand and
 Chris Bellonzi
Torah Portion:
Bo



**Bette Caan, Marjorie Kaplan, Mariko Kawaguchi,
 Katherine Salazar-Poss, Elizabeth Santos-
 Davidoff, Ann Singer, Ellen Starkman**
B'nei Mitzvah:
 February 22, 2020
Tauber Anshei (Adult) B'nei Mitzvah Program
Torah Portion:
Mishpatim



Elana Maidenber
Bat Mitzvah:
 February 8, 2020
Parents:
 Ted and Rhiana
 Maidenber
Torah Portion:
Beshalach



**Lucy Felsenthal and
 Theodore Mosson**
B'nei Mitzvah:
 February 29, 2020
Parents:
 Martin and Amy Felsenthal /
 Andrew and Laura Mosson
Torah Portion: *Terumah*



Dylan Aaronson
Bar Mitzvah:
 February 15, 2020
Parents:
 David and Kathryn Aaronson
Torah Portion:
Yitro



William Keller
Bar Mitzvah:
 February 29, 2020
Parents:
 Roberta Keller and Bruce Keller
Torah Portion:
Terumah



Julie Young
Bat Mitzvah:
 February 13, 2020
Adult Bat Mitzvah
Torah Portion:
Yitro

Celebrating a Shehecheyanu Moment?

Congregation Emanu-El is a partner in the transitional moments of our members' lives. Be it a baby naming or brit milah, bar or bat mitzvah, conversion or wedding ceremony, or a recovery from illness, the Temple clergy and staff strive to ensure that each sacred "Shehecheyanu Moment" is deeply fulfilling and personal. A donation to the Emanu-El Life-Cycle Fund is a lovely way to mark a personal life-cycle experience, to honor friends or family celebrating a happy milestone or in gratitude for the services, the clergy provide during these profound moments.

Please donate online at www.emanuelf.org/donate-now/ or call the Development office at (415) 750-7554.



Congregation Emanu-El
Two Lake Street
San Francisco, CA 94118
www.emanuelsf.org

We are a vibrant, sacred Jewish community that is dedicated to advancing our members' lifelong involvement in Judaism through worship, learning, good deeds, and congregant to congregant connections.

Beth Singer, *Richard and Rhoda Goldman, Senior Rabbi*

Jonathan Singer, *Richard and Rhoda Goldman, Senior Rabbi*

Sydney B. Mintz, *Senior Associate Rabbi*

Ryan Bauer, *Senior Associate Rabbi*

Carla Fenves, *Rabbi*

Jason Rodich, *Rabbi*

Marsha Attie, *Cantor*

Arik Luck, Ben and A. Jess Shenson, *Cantor*

Roslyn Barak, *Senior Cantor Emerita*

Stephen Pearce, PhD, *Sr. Taube Emanu-El Scholar and Rabbi Emeritus*

Rabbi Lawrence Kushner, *Emanu-El Scholar*

David N. Goldman, *Executive Director and General Counsel*

Members of the Board of Directors

Alan Greinetz, *President*

Joel Roos, *Vice President*

Sasha Kovriga, *Treasurer*

Ellen Fleishhacker, *Secretary*

Robert Blum	Robert Newman
Nersi Boussina	Paula Pretlow
Sandi Bragar	Rita Semel
Barrett Cohn	Lisa Stern
Stuart Corvin	Gunda Trepp
Jill Einstein	Matt Van Horn
Lara Ettenson	Noah Wintroub
Alia Gorkin	Hilary Zarrow
Julie Levine	

The Temple Chronicle (USPS 023-317) is published monthly except June and July for \$36 per year by The Congregation Emanu-El, Two Lake Street, San Francisco, CA 94118. Periodicals Postage Paid at San Francisco, CA, and at additional mailing offices.

POSTMASTER: Send address changes to *The Temple Chronicle* at Congregation Emanu-El, Two Lake Street, San Francisco, CA 94118.

PERIODICAL

★ CONGREGATION EMANU-EL'S ★

shushan's
bazaar

SUNDAY MARCH 8 2020

Festivities for all ages will include games, crafts, food, entertainment, and Purim fun!

Carnival 2:30-5:00
Purim Spiel 5:00-5:45

Annual Purim Bake Sale

come in your favorite costume!