

# *Emanu-El SF*

CHRONICLE NO. 49 | MAY 2022 | NISSAN/SIVAN



**Upcoming Holidays  
at Emanu-El**

PAGE 2

**Ukraine Update  
from Former  
CIA Official**

PAGE 6

**Celebrate with  
2022 Confirmands**

PAGE 6

# Upcoming Worship Services at Emanu-El



## Israeli Independence Day Shabbat and Celebration *With guest Israeli musician Shimon Smith*

Friday, May 6, 6:00 – 7:00 pm, Main Sanctuary

Following the service, continue the celebration with Israeli delicacies served outside in our beautiful courtyard, with Israeli music, dancing, and art projects available for children!

## Lag Ba'Omer: Save the Date

Thursday May 19, in the early evening, we will gather outdoors for our annual Lag Ba'Omer kumzitz singalong with rabbis' teachings and storytelling. Check the website for more details.



## Sinai at Night: Reveal Your Torah

Saturday, June 4 7:00 – 9:00 pm

Manny's, 3092 16th St, San Francisco, CA

Join us for an intimate night of learning, singing and wondering in celebration of Shavuot, the Jewish Spring harvest holiday that also takes us back to the mystery of Torah at Sinai! Join rabbis and cantors from Sherith Israel, Sha'ar Zahav and Congregation Emanu-El.

Rabbis Jessica Zimmerman Graf, Mychal Copeland and Jason Rodich will each teach gems of Torah are personal favorites and that highlight something about what it is to reveal one's own truth. Cantors Marsha Attie, Arik Luck, and Toby Glaser will lead us in communal singing, it's own kind of revelation. Come ready to explore your Torah, think critically about the world and what you know, and see old friends and make new ones.

Registration required. Food provided.

## *Shabbat at Emanu-El*

Emanu-El offers a variety of worship services which are open to all!  
Join us for one of our services soon — we would love to see you there.

**Friday Night Shabbat**

*Every Friday at 6:00 pm*

**Young Adult Late Shabbat**

*Second Fridays at 8:00 pm*

**Saturday Shabbat**

*Saturdays at 10:30 am*

**Torah Study**

*Saturdays at 9:15 am*

**Plus...**

**Holiday Services**

**Adult B'nei (Anshei)**

**Mitzvah Program**

**Gender Affirming**

**Ceremonies**

**...and more!**

*Visit [emanuelsf.org](http://emanuelsf.org) for more information on all of our services and events!*

# Yom Ha'atzmaut: Celebrating Israel's Achievements

Shalom Rav from Richard and Rhoda Goldman Senior Rabbi Jonathan Singer

The other day I was sitting at lunch with Tali Zisman, a member of the temple who grew up across the street from Golda Meir, with Ben Gurion's house just a few blocks away. It is so fascinating to talk with someone who was there at the founding of the state — whose family had immigrated from Vilna and Warsaw as a part of the yishuv. As a young man he served in the IDF as Israelis organized themselves to stand up against attempts to wipe out a country that like so many others was carved out of the remains of the Ottoman Empire.

This month as a part of our celebration of Yom Ha'atzmaut (Israel Independence Day), I plan to interview him and have him share his experience growing up as the State of Israel was just growing up. It is such a gift to have a window into this aspect of Jewish history and celebrate the blessing and the miracle that we Jews today often take for granted. We Jews who are committed to the messianic vision of creating a world reaching towards perfection, so want Israel to be what the Torah envisions — an “or l'goyim,” a light unto the nation. At times though, we are so good at seeing what is wrong with something, that we forget to celebrate and appreciate what is right with it, and the blessings we have achieved. We know Israel must keep working hard on extending the hand of peace, of making sure it is a place that welcomes the rainbow diversity of Jewish identity, that treats its minorities equally with the majority, that works to restore balance to the economy so all Israelis live with dignity and hope as she pushes back against her extremes. But everything I just wrote could also be said about our country. We are not wrong to point out what is broken and needs true tikkun — to be repaired — in either place.

But Yom Ha'atzmaut asks us to step back and celebrate with full vigor what has been achieved so far. And there is much to celebrate. Israel is today home to the largest Jewish population in the world, a population that is diverse in color and religious expression, that is young and vital. It is still the startup nation that is helping to bring technological miracles to the world. With the help of our Israel Action Committee led by Jordan Hymowitz, she is bringing in the rest of Ethiopian Jewry as they seek to make aliya, and just hosted an incredible array of

Arab/Muslim nations who as part of the Abraham Accords want to not just seek peace and pursue it but also partner together with Israel to create a safer, more economically vibrant Middle East. Israelis are in Poland and Moldavia helping with the Ukrainian refugee crises and welcoming in Ukrainians as part of their

efforts to offer refuge even as Prime Minister Bennet serves as a conduit with the Russians in attempts to bring an end to that awful, most horrific conflict. She is a country with health care for all, colleges that are accessible and well respected, and a culturally dynamic place. Who knew that in this little strip of land, so much talent could be concentrated and despite the ongoing conflict expressed as she strives not just to survive, but to thrive.

Yes, we join with those who want the state to be better, and we as a synagogue support that effort. We work hard to be a center of loving and diverse dialogue about Israel, creating a safe place for people for speakers from different ends of the political spectrum to express their opinions about how it might be an even greater reflection of the vision expressed by the founders in the Declaration of Independence. We also understand that there are some who subconsciously or not reflect an antisemitism that denies nationalism only to Jews and therefore embrace an anti-Zionism. Wanting our children to have the tools to stand up against such a perspective and be well educated about Israel, we have expanded our study opportunities in our religious school and are working to try to restore the annual Emanu-El teen trip to Israel so they might witness firsthand both its miraculousness, help affirm their own Jewish identities, understand that which can be made better, and see themselves as partners in helping those working on it, join together to create the Jewish future. Now that covid seems to be lifting, we are continuing our various adult trips there as well, and encourage you to join us.



**Richard and Rhoda Goldman Senior Rabbi Jonathan Singer**



# My Voyage to a Mikvah and Bat Mitzvah in my 70's with Congregation Emanu-El

By Temple Member Meta Pasternak

In 1966, my fiancé and I were fortunate to find a Rabbi in Stockton, California who was willing to marry us. My husband was Jewish; I was not. The Rabbi asked if I intended to convert and my answer was, "Not at this time." He accepted that. It was important to my husband that our children be raised as Jews, and I didn't feel that my own Lutheran background was something I needed to pass on.

Our sons had their Bar Mitzvahs in Sacramento at Temple B'nai Israel and our daughter in Lafayette at Temple Isaiah. The Rabbis' sermons interested and enlightened me. What is our purpose here? How do we relate to the stories in the Torah? How can we make a difference in this world? The services were filled with beautiful music, but as much as I loved going to services, I just wasn't ready to commit to any religion.

After my husband died in 2010, I decided to move to San Francisco where my children and grandchildren lived. My son Jeremy and daughter-in-law Karen belonged to Temple Emanu-El. I picked up my granddaughter, Abby, from school and dropped her off at Hebrew School. It was beginning to dawn on me that I missed services. I wanted to join the Temple. I happened to be taking a class at the Fromm Institute from Rabbi Pearce. I told him my story and he encouraged me to contact Emanu-El's former Membership Director Terry Kraus. Although I was not Jewish, she allowed me to join along with my daughter who lives in the same building I do. Then I took a Jewish literature class from Rabbi Carla Fenves, who had been the Rabbi for my granddaughter's Bat Mitzvah. In the final class, Rabbi Fenves asked the participants what it meant to them to be Jewish. One woman talked about the emphasis on Tikkun Olam, making the world a better place. *This* was the religion I wanted to be



▲ Meta Pasternak and her family at her grandson's Bar Mitzvah.

A framed photo of Meta Pasternak and her late husband. ►



part of. It wasn't merely the beautiful services or music, or even the sermons; it was what is inherent in Judaism that drew me. Why it took me so long to realize that, I'm not sure.

Rabbi Fenves led me through the process and at age 73, I had a Mikvah. Rabbi Bauer was one of the Beit Din that interviewed me, and I still remember his perceptive and thoughtful questions. Going to services began to feel more meaningful, but I really wanted to be part of the services by knowing what I was singing and learning the reasons behind the rituals. I joined the Anshei Mitzvah class in 2018 and in January of 2020, at age 76, I had a Bat Mitzvah. During that time, I practiced my Hebrew with my grandson, Sam, who was studying for his

Bar Mitzvah. My daughter, Emmy, gave me constant support and encouragement. And finally, the day came. Reciting my Torah portion, walking up to the Ark, being so close to the exquisite ancient Torah, reciting the prayers, chanting the Blessing before the Haftarah, and being with my classmates made it one of the most memorable experiences of my life. My classmates were wonderful adults; all there for different reasons, but with the same goal. These are people whom I am now pleased to call my friends. Cantor Attie and Cantor Luck led us through the two-year process with kindness and grace.

Even during the pandemic, the Temple has been an important part of my life. I am a tutor through the Jewish Coalition for Literacy, a connection made through the Temple when I met Randi Fields, Senior Director of Membership and Engagement Operations. Being able to continue tutoring online with former tutees from the local public school kept me sane at a time when I could only see my grandchildren outside at a distance of six feet. I became a B'Bayit leader and met other congregants interested in tutoring. I look forward to the time I will meet them in person. This fall, I attended Kol Nidre services in person and later that month, my husband's Yahrzeit service. I am grateful that 55 years ago he introduced me to Judaism, and that, when I was ready, Temple Emanu-El welcomed me in.



Meta Pasternak becoming a Bat Mitzvah at Emanu-El.

## G-House Sunday Night Dinners are back!

### Sunday nights

We are thrilled to share with you that our partnership with the G-House is back up and running! Run by the Larkin Street Youth Services, G-House is a 30-bed housing program for San Francisco unhoused young adults (ages 18-24,) transitioning from adolescence to adulthood), providing residents with tools to remove the obstacles in their life which threaten a successful transition to independent living. We are excited for our community to sign up to sponsor a Sunday night meal for the incredible clients and community at the G-House.

Due to continued COVID protocols in place with G-House, we are not yet able to have in-person dinners (hoping this can occur soon...stay tuned!). **HOWEVER, we can now provide home cooked meals** in addition to still being able to order from a local restaurant. **More precise instructions for food options and delivery will be sent to you following your sign-up.**

For more information, visit [emanuelsf.org/community/get-involved](https://emanuelsf.org/community/get-involved)



# One More Header?

The IAC Presents:

## **Ukraine: A discussion of Putin's Strategic Intent and Strategy With former CIA Official to Russia/Eurasia, Robert Dannenberg**

Wednesday, May 11, 7:00 pm



Rob is an independent consultant on geopolitical and security risk. From 2009 to 2014, he was a managing director and head of the Office of Global Security for Goldman Sachs. From 2014 to 2021, Rob was an advisor to Goldman Sachs and the firm's clients on geopolitical risk.

Prior to joining the firm, Rob worked at BP plc where he was the director of International Security Affairs. Before that, he worked for 24 years at the Central Intelligence Agency (CIA), where he served in several leadership positions, including chief of Operations for the Counterterrorism Center, chief of the Central Eurasia Division, and chief of the CIA's Information Operations (Cyber) Center. He is a recipient of the Distinguished Career Intelligence Medal, the Donovan Award for Operational Excellence, the George HW Bush Award for Excellence in Counterterrorism and the Director's Award.

Rob is a member of the Board of Advisors to the Director of the National Counterterrorism Center. Rob is President of Quint Advisors and is a frequent contributor to The Cipher Brief.

---



## **An Update on our Jewish Ethiopian Brethren**

In March the Supreme Court of Israel issued a ruling that the government had to proceed in bringing 3,000 Ethiopian Jews to Israel by November. A brief, partially funded by proceeds raised by Congregation Emanu-El members, helped to fund this effort.

The first of the olim should arrive by Passover.

Todah Rabah to all that helped contribute and to all Israel Action Committee members.

---

## **Join us for Confirmation 2022/5782**

Friday, June 3, 6:00 pm, Main Sanctuary

We wish this year's Confirmation Class a hearty mazel tov! We look forward to celebrating this Emanu-El legacy with the entire community.

We will be honoring our current confirmands, as well as those from the classes of 1970, 1971 and 1972.

Our 12th graders will lead the entire service and "confirm" their Judaism in a moving ceremony filled with music, prose and kavanah, intention. These students will be the next to link our chain of tradition and receive the Rabbis' Honor Cup.

**2022 Confirmands are:** Amelia Cook, Alexandra Eisler, Samuel Goldberg, Andrew Kay, Brandon Krim, Lydia Milstein, Denia Mittelman, Jenna Satovsky, Jessie Satovsky, Lucas Segal, Samantha Shaw, Madeline Shenkan, Raya Shveyd, Owen Swagel, Spencer West, Callahan Wilson, Zadie Winthrop, Matthew Wolf, Amanda Yolles

---





## YFE Coast to Coast

### *Our 9th Grade Trip to NYC*

Emanu-El's Youth and Family Education program plans several

trips for various age groups every year! This year's 9th grade trip to New York City was a blast, from city sights to touring Hasidic neighborhoods.

"While we were on our tour of the Hasidic area of Brooklyn called Borough Park, we were treated to two amazing acts of kindness by residents there. Our skilled and experienced tour guide, Jeffrey Altman, told us that Hasidic Jews act from their hearts and this is certainly what we saw. We were stopped on a residential sidewalk eating slices of kosher pizza when the neighbor came out with a gallon of water and cups for us. Truly, we

were stunned at her generosity. Then a few minutes later on

another street, a resident saw our group and invited us in to her home to see her preparations for Shabbat. Our tour guide was amazed because not only had this never happened to him before, it was the second of his tour groups she had invited into her home on the same day. Then she so generously gave us all — and we were not a small group — dishes of her delicious potato kugel which clearly she had prepared for her family's Shabbat meal. The hospitality we experienced through these two acts of kindness made an indelible impression on us all."

— Terry Kraus, Trip Chaperone and former Emanu-El Membership Director

## Camp Connections

### *Our 6th & 7th Grade Retreats*

Summer camp is such an impactful experience — even one weekend connects us in ways that wouldn't otherwise be possible. With URJ Camp Newman just 90 minutes away, YFE was able to have two Shabbat retreats for our 6th and 7th graders. In November, our 7th graders were immersed in Shabbat, camp, and community. They got to sleep in cabins with friends, share their talents and fears, and even got to see the sillier sides of Rabbi Bauer and Cantor Luck. The 6th graders were able to experience camp in April. A high point for the weekend was seeing two of their teachers read from the Torah... and Ga-Ga, too. The group left more connected to each other, the counselors, their Jewish identity, and the B'nei Mitzvah process. We can't wait to see many of them on the Bimah.



# Ways to Give

Making a gift to Emanu-El is a meaningful way to honor friends and family while supporting the synagogue. The Temple offers a variety of donation opportunities so all members can participate in the mitzvah of tzedakah at whatever level is comfortable. For additional information about our different funds and various ways to give, please visit our website.

- **Send us a Check:** 2 Lake Street, San Francisco CA, 94118. Congregation Emanu-El - Attn: Development.
- **Visit Our Website:** [emanuelf.org/support-us/](https://emanuelf.org/support-us/)
- **Appreciated Stock Gifts:** The Congregation accepts all contributions made via stock transfers. You will enjoy an immediate tax deduction for the value of the stock transfer and avoid paying capital gains.
- **Corporate Matching:** Many Bay Area companies will match your gift dollar-for-dollar. Please contact your company's matching gifts coordinator to determine whether your gift to Congregation Emanu-El can be matched.
- **Planned Giving:** Including Congregation Emanu-El in your estate planning is a promise to your children, grandchildren, and future generations that Emanu-El will continue to be a thriving home for worship, study, and community.

If you need assistance, please contact the Development Office at [development@emanuelf.org](mailto:development@emanuelf.org)

*Thank you for your generosity and participation. Your contributions will help ensure we meet the needs of the Emanu-El community — now and for future generations. The following gifts were received from March 1, 2022 – March 31, 2022.*

## CANTORS' MUSIC FUND

**Supports the Congregation's music programs and is used for charitable giving at the Cantors' discretion**

**Jackie Dolev & Matt Cooperberg**  
in celebration of Jake Cooperberg's Bar Mitzvah

**Jeanine Hawk & Darrell Jan**  
in appreciation of Cantor Marsha Attie for Hawk-Jan Wedding

**Jeanine Hawk & Darrell Jan**  
in appreciation of Rabbi Jason Rodich for Hawk-Jan Wedding

## EMANU-EL COMMUNITY SERVICE FUND

**promotes and supports social action and community service programs**

**Michael Kaiser & Larry Sanders**  
in celebration of Chelsea Eng's conversion to Judaism

## EMANU-EL LIFE-CYCLE FUND

**Enables all congregants to celebrate significant milestones, regardless of economic circumstances**

**Stuart & Anita Tanenberg**  
in observance of the *Yahrzeit* of Lillian Fenig

**Brad & Yanina Thayer**  
in celebration of Eva Thayer's Bat Mitzvah

**Michele Woolfe-Avramov**  
in observance of the *Yahrzeit* of Louis Liebert

## EMANU-EL PRESCHOOL FUND

**Provides scholarships and support for our Preschool programs**

**Caren Alpert**

**Maxine & Justin Raphael**

**James & Sheryl Reuben**  
in celebration of Adele Corvin's birthday

**Jerusha & Kole Roybal**

**Lisa & Alex Yakubovich**



**FLOWERS FOR THE BIMAH****Bari & Sean Cessna**

in celebration of Shane Cessna's Bar Mitzvah

**Katherine & Brian Taylor****FOR THE ROOSEVELT FOOD PANTRY****Stephanie Scott**

in memory of William M. Scott

**ONEG SHABBAT AND KIDDISH SPONSORSHIP FUND****Provides for the weekly Shabbat Oneg, Kiddush, and other congregational receptions****Adam & Julia Bergman****Gedalia Braverman**

in celebration of Ari and Ella's B'nai Mitzvah

**Stuart & Anita Tanenberg**in observance of the *Yahrzeit* of Max Oishan**Brad & Yanina Thayer**

in celebration of Eva Thayer's Bat Mitzvah

**RABBIS' DISCRETIONARY FUND****Used for charitable giving at the Rabbis' discretion. Contributions to Rabbis' Discretionary Fund are currently supporting COVID-19/Emergency relief efforts. Thank you for your support.****Anonymous**in observance of the *Yahrzeit* of Julius Saks**Carly & Daniel Abbott****Elyse Boyar****Anthony Brenner & Susan Enders****Marilyn Brenner**in observance of the *Yahrzeit* of Lillian Keen Brenner**Marilyn Brenner**

in appreciation of Rabbi Jonathan Singer's kindness and support

**Jackie Dolev & Matt Cooperberg**

in celebration of Jake Cooperberg's Bar Mitzvah

**Ralph & Marsha Guggenheim**

in celebration of Asa Bauer's Bar Mitzvah

**George Landau (2)****Elyse Salven-Blatt**in observance of the *Yahrzeit* of David Salven**Damon Silver****Albert Villa****Pamela Wellner & Eugene Dickey**in observance of the *Yahrzeit* of Eva Wellner**Paul Zarefsky & Marsha Felton**

in celebration of Asa Bauer's Bar Mitzvah

**YOUTH EDUCATION FUND****Supports special programming and materials for the Youth and Family Education Program****Daniel & Alla Klionsky**in observance of the *Yahrzeit* of Usher Feldman**Bonnie Magid**in observance of the *Yahrzeits* of Armand Magid and Jacob Magid**Lauren Schuller**

in memory of Ruth Rose Schuller

**OTHER CONTRIBUTIONS****Camille Angel & Wendy Brummer**

in honor of Brittany Blum

**Marvin & Stephanie Anzel**

in celebration of Dylan Anzel's acceptance to Phillips Academy at Andover

**Lance & Cathy Bayer****Ilya Berman & Larisa Lisitsa**in observance of the *Yahrzeit* of Zinaida Portnaya**Barbara Berman**

in memory of Murray Schneider

**Victoria Dobbs**

in memory of Jacques Roos and Julian Rhine

**The Horace W. Goldsmith Foundation****Patsy Greenstein**in observance of the *Yahrzeit* of Saul Greenstein**Wendy Kesser**

in honor of Brittany Blum

**Julie & David Levine****Midori Tong**

in memory of Murray Schneider

**Nick & Eugenia Vestel**in observance of the *Yahrzeits* of Nachman Broitman and Kuana Broitman**Lawrence & Caroline Werboff**

in celebration of Asa Bauer's Bar Mitzvah

**Henry & Carol Winetsky**

in memory of Murray Schneider

# Emanu-El Next: Investing for our Jewish Future

**W**e believe that Judaism guides us on our journey to be better people, create community, and repair the world. Our historic home has long been cherished as a magnificent building that symbolizes Jewish arrival and integration into our city. But the building no longer adequately serves the need of the Emanu-El community and hinders our ability to effectively support and engage our congregation. The demands of the 21st century Jewish community — and Emanu-El's 1,800 congregant families — are quite different than those of the 300 families in the 1920s who created our current building. That's why we have embarked on an ambitious effort to revitalize and reimagine our home to meet the expanding needs of our current members and those of generations to come.

## Donor Spotlight: Kimberly and Danny Sanner



**Kimberly and Danny Sanner**

Kimberly and Danny Sanner are thrilled to make a gift to Emanu-El Next – the largest philanthropic contribution they've ever made. "Emanu-El has been there for us every step of the way — from our engagement to our wedding, and as we've raised our family," Kimberly says. "This gift is our way of saying thank you to a community that means so much to us."

Growing up in Palo Alto, Kimberly and Danny met and started dating in high school. "We've known each other over half our lives!" Kimberly says. She grew up with a conservative congregation, while Danny, one of three boys, went to church every Sunday. "I was raised Christian," he says, "but Judaism spoke to me. I respected the values – the importance of family, intellectual curiosity, being a good citizen and active in the community."

As their relationship matured, they explored how Judaism would fit into their lives. "I wanted to raise a Jewish family, but I didn't know how that would work for

us," Kimberly says. So they sought out a synagogue to support them. Before becoming members, they found an Intro to Judaism class at Emanu-El and loved their experience — it helped Danny feel comfortable raising a family in a Jewish home. "As someone who wasn't raised Jewish, getting to know Emanu-El, I was welcomed with open arms," he says.

The intimate classroom setting of the Adult Education program, "was like a window into a world that became so important for us," Kimberly says. "The classes were instrumental in deepening our early relationship and our bond to the congregation." Their wedding guest list grew with the friends they made in a "Chuppah and Beyond" class, and their education gave them the confidence to write their own Ketubah. They asked Rabbi Steven Pearce to read those vows at their wedding. "The Ketubah that we wrote 13 years ago has stood the test of time, and is one of our most cherished possessions," Danny says. "Thanks to our experiences together at Emanu-El, I now identify as Jewish."

Danny and Kimberly volunteer their time at our congregation, and their son, Caden, is in the Youth and Family Education program. "The connection between home and school plays an important part in our efforts to pass along Jewish values to our son," Danny says. They appreciate that Emanu-El Next will utilize funds to support families who otherwise wouldn't have the resources to be a part of the community.



**The new courtyard at Emanu-El will serve as the bustling community center of the congregation, with the ability to host a wider variety of large and small events, and instilling the space with soft, beautiful light.**

Kimberly is on the board of the Anti-Defamation League, has been involved with AIPAC for decades, and has worked with Rabbi Jonathan Singer on Israel programming and the World Zionist Congress election. “My parents set an example of Jewish community involvement and generosity in my life,” she says. “As a child, when my temple had an expansion campaign, they were eager to help, and I saw how meaningful that was for them to be a part of.” Danny’s mother instilled in him a passion for generosity, too — in particular, for increasing access to education for those that come from disadvantaged backgrounds.

“A synagogue is a home base for *Tikkun Olam*,” Kimberly says, firm in her belief that Emanu-El Next will foster a stronger community and help repair the world. Especially excited to see the Youth and Family Education program grow into new, state-of-the-art classrooms, she says:



**The top floor will be dedicated to education, with a safe Preschool playing area for young children and families to enjoy. Emanu-El Next will maintain the historical integrity of our beloved sanctuary and allow us to adapt our facilities to best serve Emanu-El’s community for generations to come.**

“Children benefit from an extension of Jewish life beyond the home, and the spaces they’re in should be conducive to learning and playing.”





Congregants will enjoy the procession ascending to the main sanctuary the way our founders intended, with a design that echoes the procession of the Second Temple in Jerusalem, restoring the entrance to Emanu-El on Lake Street and making it safer, more welcoming and accessible.



Entering this lively space, guests will be greeted with activity everywhere they look — people meeting friends, taking classes, talking with clergy, catching up with fellow parents waiting for their children's classes to finish, and generally creating and engaging with community.



A reimagined Guild Hall will better serve as a premier event location, preserving its important historic elements while also updating the space. It will include more natural light, modern amenities, and greater versatility to host different kinds of events.



Emanu-El Next: Investing for our Jewish Future will transform the congregation—both its physical infrastructure, and its capacity to serve the community — bringing Jewish values to life in meaningful ways and connecting members to Jewish life and each other.

Please visit our website, [next.emanuelsf.org](http://next.emanuelsf.org) to learn more. Or, if you would like to make a commitment to Emanu-El Next, please contact Julie Weinberg, Director of Development, at [jweinberg@emanuelsf.org](mailto:jweinberg@emanuelsf.org) or 415-750-7557.



## Condolences to Our Members Who Have Suffered A Recent Loss

Senator Dianne Feinstein on the loss of her husband; Annette, Heidi and Eileen, stepdaughter Katherine Mariano (Rick) on the loss of their father; Mitchell and Spencer Riley, Lea, Tristan, Julien and Benjamin Bourgade, and Eileen Mariano on the loss of their grandfather, **Richard Blum**.

Victoria Dobbs on the loss of her father, **Julian Rhine**.

Cyril Allouche (Lorien) on the loss of his grandmother; Julian and Neomie Allouche on the loss of their great-grandmother, **Helene Scialom**.

Hillary Wollin (Lawrence) on the loss of her father; Hez Wollin (Javier Nova Rosa) and Charles Wollin on the loss on their grandfather, Noemi Wollin on the loss of her great-grandfather, **Bernard Nusinow**.

Amparo Mitchell (Jason) on the loss of her father; Sarah and Lena Mitchell on the loss of their grandfather, **Dr. Francisco Del Castillo Espinoza**.

Marcia Schneider on the loss of her husband; Molly Schneider (James Windsor-Wells) and Claire Schneider (Patrick May) on the loss of their father, Audrey and Graham Windsor-Wells on the loss of their grandfather, **Murray Schneider**.

Edward Schuller on the loss of his mother; Megan and Lauren Schuller on the loss of their grandmother, **Ruth Rose Schuller**.

Zigmund Rubel on the loss of his wife; Sophia, Katherine, and Kazimier on the loss of their mother; Margaret Kaufman on the loss of her daughter, Jennifer Kaufman (Stephen Hegedus) and Richard Kaufman (Jennifer) on the loss of their sister, and Eva and Jonas Kaufman and Daniel Hegedus on the loss of their aunt, **Alisa Lyn Kaufman Rubel**.

Rabbi Morris Hershman on the loss of his wife, **Geraldine Hershman**.

Terezia Bohrer on the loss of her husband, **Norman Bohrer**.

Katie Albright (Jake Schatz) on the loss of her mother; Eleanor and Benjamin Schatz on the loss of their grandmother, **Madeline Albright**.

Scott Kahn (Vicki) on the loss of his brother; Jonathan Kahn (Erin) on the loss of his uncle; Max, Stella and Sadie Kahn on the loss of their great-uncle, **Don Kahn**.

Ben Wood (Rachel Fleischman) on the loss of his father, **Robin Owen Bushby Wood**.

Susan Wolfe (Robert) on the loss of her brother; Lisa Wagonfeld (Joel) on the loss of her uncle, Lauren and Brooks Wagonfeld on the loss of their great-uncle, **John Zwerling**.

Lisa Kessler (Glenn Egrie) on the loss of her brother; Talia and Maya Egrie on the loss of their uncle, **Mark Kessler**.

Craig Lipton on the loss of his wife; Eli and Esme Lipton on the loss of their mother, **Miriam Lipton**.

Susan Aronow on the loss of her husband, **Lou Aronow**.

Elaine on the loss of her husband; Laura Myers (Kenneth Quandt) on the loss of her father, Dr. Zoe Quandt (Ethan Brown) on the loss of her grandfather, and Jack and Josephine Brown on the loss of their great-grandfather, **Maxwell Myers**.

## Mazel Tov to Our Members Who Have Experienced Joy

Lynn Altshuler and Stanley Herzstein on the birth of their grandson; and Josh Herzstein and Jing Yi Ng on the birth of their son, **Luwen Herzstein**.

Veliz Perez Fein and Harrison Jett Fein on the birth of their daughter, **Mira Aviva Fein**.

**Harmon Shragge** on being elected as Sinai Memorial Chapel's president.

**Larissa Siegel Solomon** on becoming the new Chief Development Officer at the JCCSF.

**Lynn Hershman Leeson** is one of the 43 featured American artists at the 59th edition of the Venice Biennale, one of the most significant international art events in the world.

## Welcome New Members

Megan Barrett

Billie Bernstein

Jack Bernstein

Shakkaura Kemet

Jacob Kemet-Rosenwohl

Lynn Kennedy

Jacob Langer

Gavin Lazarus

Denise Leary

David Levine

Iris Loofbourrow

Laura Loofbourrow

Nathan Loofbourrow

Everette Mallin

Jordan Mallin

Morrison Mallin

Tracy Marlowe

Joshua Nossiter

Ferne Sherkin-Langer

## Welcome Back Rejoined Members

Rachel Brody

Scarlett Brody-Rochman

Judi Cohen

Carl Speizer



# B'nei Mitzvah



**Leah Mordehai**

**Bat Mitzvah:**

May 7, 2022

**Parent(s):**

Anya Mordehai

**Torah Portion:**

*Vayishlach*



**Yedidiah Luck**

**Bar Mitzvah:**

May 21, 2022

**Parent(s):**

Cantor Arik and Rachel Luck

**Torah Portion:**

*Behar*



**Sadie Franklin**

**Bat Mitzvah:**

May 7, 2022

**Parent(s):**

Darleen and Marc Franklin

**Torah Portion:**

*Kedoshim*



**Madison and Chloe Gensler**

**B'not Mitzvah:**

May 28, 2022

**Parent(s):**

Lianne and Scot Gensler

**Torah Portion:**

*Behukkotai*



**Maxwell Ginsburg**

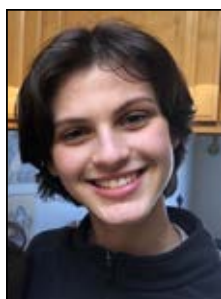
**Bar Mitzvah:**

May 7, 2022

**Parent(s):** David Ginsburg  
and Jennifer Jackson

**Torah Portion:**

*Kedoshim*



**Rowan Blumenthal**

**B'nei Mitzvah:**

May 28, 2022

**Parent(s):** Avi Konstantinovsky  
and John Blumenthal

**Torah Portion:**

*Behukkotai*



**Blooma Shlain Goldberg**

**Bat Mitzvah:**

May 14, 2022

**Parent(s):**

Tiffany Shlain and Ken Goldberg

**Torah Portion:**

*Emor*



**Ari Hirson**

**Bar Mitzvah:**

May 28, 2022

**Parent(s):**

Lorie and Ron Hirson

**Torah Portion:**

*Behukkotai*



**Arthur Cohn**

**Bar Mitzvah:**

May 14, 2022

**Parent(s):**

Barrett and Tria Cohn

**Torah Portion:**

*Emor*



**Congregation Emanu-El**  
Two Lake Street  
San Francisco, CA 94118  
emanuelf.org  
(415) 751-2535

PERIODICAL

We are a vibrant, sacred Jewish community that is dedicated to advancing our members' lifelong involvement in Judaism through worship, learning, good deeds, and congregant-to-congregant connections.

## STAFF

Beth Singer,  
Richard and Rhoda Goldman Senior Rabbi

Jonathan Singer,  
Richard and Rhoda Goldman Senior Rabbi

Sydney B. Mintz, Senior Associate Rabbi

Ryan Bauer, Senior Associate Rabbi

Jason Rodich, Rabbi

Sarah Joselow Parris, Rabbi

Marsha Attie, Cantor

Arik Luck, Ben and A. Jess Shenson Cantor

Roslyn Barak, Senior Cantor Emerita

Stephen Pearce, PhD, Taube Emanu-El Scholar  
and Sr. Rabbi Emeritus

Rabbi Lawrence Kushner, Emanu-El Scholar

David N. Goldman, Executive Director and  
General Counsel

## MEMBERS OF THE BOARD OF DIRECTORS

Ellen Kaye Fleishhacker, *Co-President*  
Alan Greinetz, *Co-President*  
Paula Pretlow, *Vice President*  
Joel Roos, *Vice President*  
Mark Lehmann, *Treasurer*

Robert Blum	Dr. Larry Rand
Nersi Boussina	Leesa Miao Romo
Barrett Cohn	Rita Semel
Stuart Corvin	Lisa Stern
Sue Diamond	Robert Tandler
Jill Einstein	Gunda Trepp
Alia Gorkin	Matt Van Horn
Julie Levine	Noah Wintroub
Robert Newman	Hilary Zarrow

*The Temple Chronicle* (USPS 023-317) is published monthly except June and July for \$36 per year by The Congregation Emanu-El, Two Lake Street, San Francisco, CA 94118. Periodicals Postage Paid at San Francisco, CA, and at additional mailing offices.

POSTMASTER: Send address changes to *The Temple Chronicle* at Congregation Emanu-El, Two Lake Street, San Francisco, CA 94118.



# A Jewish Journey to Morocco

with Rabbis J. Singer and Kushner

**Save the Date: November 3-10, 2022**

*Come with us on the road to Fez, Casablanca, Marrakech and more as we journey through the Jewish past, learn about the spiritual, folk and intellectual contributions of the Moroccan Jewish experience, connect with the contemporary community and the hope of the Abraham Accords.*

*Additional information and pricing to come!*

