

Emanu-El SF

CHRONICLE NO. 55 | DECEMBER 2022 | KISLEV/TEVET

Chanukah!

PAGES 4 – 6

Light of Giving

PAGE 7

Volunteer Opportunities

PAGE 10



With our *Gratitude*

For the past eight years, we have been blessed with the exemplary rabbinic leadership of Rabbi Jason Rodich, who has served this congregation with professionalism, dedication, warmth, and care. During this time, he has deepened our sense of community, our spiritual life, and our love of Torah.

After much deliberation, Rabbi Rodich and his husband, Fran, have decided to return home to Minnesota in the spring of 2023 to raise their daughter (and soon-to-be second daughter, God willing) and be closer to family.

As it is part of our mission to help develop outstanding young rabbis, it is a bittersweet but proud moment when we wish shalom to a rabbi whom we as a community have nurtured just as he has nurtured us. We know that Rabbi Rodich will continue to be a beloved leader to the Jewish community and share his love for the Jewish people wherever he lives.

Rabbi Rodich's work at Emanu-El has been extraordinary. He has led our Young Adult program and the renewal of our Teen Education program. He has helped to develop our Spark! adult learning curriculum and overseen our conversion program. He has embraced our joyous lifecycle events while offering profound comfort during our times of loss. What a blessing he has been for us — and what a blessing he will be in his new life in Minneapolis.

Both Rabbis Singer and Rabbi Bauer will be working together to bring a new assistant rabbi to our congregation by July 2023 to carry forward Rabbi Rodich's legacy, especially with our Young Adult community. We will have further details as soon as possible, including information on a special Shabbat service to honor Rabbi Rodich for his years of devoted service to the community he dearly loves and which dearly loves him.

Letter to the Congregation from Rabbi Rodich

Friends,

It has indeed been one of the great honors of my life to serve Congregation Emanu-El. I am beyond grateful for these years, and especially for being a part of the lives of so many in our community for moments of joy and sorrow.

After much deliberation and reflection, Fran and I have decided to return home to Minnesota to raise our daughter (and, God willing, soon-to-be daughters!) with family nearby. This was a very difficult decision, in no small part because of my relationships with so many of you in this holy community.

When Rabbis Beth and Jonathan Singer, along with then-president Donny Friend, offered me this opportunity, I could not have imagined the awesomeness of the gift they were giving me. Emanu-El is awesome in the true sense of the word because of the people that make it so.

The Singers' leadership, friendship, mentorship and profound love of the Jewish people are all qualities that I offer thanks for. It has been an honor to serve with them, the entire clergy team, David Goldman, all of the incredible professionals that make up our staff, and so many devoted lay leaders, especially those who have taken on the demanding role of president: Donny Friend, Alan Greinetz and Ellen Fleishhacker, each of whom I am now honored to call a friend.

I share this news as my heart is filled with immense gratitude for what will be eight years of service, community, friendship and, of course, Torah. I will miss you all so much, and I can't wait to see all the beautiful things that the future holds for this sacred and special congregation.

Over the coming months I hope to have a chance to say "until next time" to as many of you as possible at Shabbat services, holiday gatherings, and education and social justice events.

*With much love and gratitude,
Rabbi Jason Rodich*



The Festival of Lights and Song!

Shalom Rav from Richard and Rhoda Goldman Senior Rabbi Jonathan Singer

To get ready for Chanukah, the Festival of Lights, besides putting the Chanukah menorahs from our collection on display, I will also search in the back of our closet for the Chanukah box. It is a gift box that contains a mixed multitude of those colored candles, some crumpled and tangled but still useable foil decorations, and a mélange of plastic dreidels and other *chazerai*.

For some of us, that box is not unlike our Christian friends' Christmas boxes. We similarly work to bring the light of joy into our homes at the darkest time of the year. Each holiday has its decorations and foods, gift-giving and time for families to gather. And each has its story. It is inaccurate to argue that Chanukah is a Jewish replacement for Christmas, because it is based on an historic event and is established in the Talmud. And yet there can be no doubt that how we observe it was influenced — as has often been the case in Jewish history — by absorbing our neighbors' practices that we found attractive.

At the bottom of my Chanukah box are applesauce-soiled sheets of music with the words of Chanukah songs printed upon them. *Rock of Ages*, *Oh Chanukah*, *Oh Chanukah*, and *Light One Candle* are a joy to sing — and, yes, they were inspired by the Christmas practice of caroling. Take the story of one of the most famous of these songs: *I Had A Little Dreidel*. Just by reading those words, I am sure the melody of that little ditty is playing in your head. While one might know that this is not a song from Sinai — meaning that it is not ancient — its derivation is fascinating. This song, which we sing after lighting the candles, is actually related to *Shalom Aleichem*, the Shabbat song!

Samuel Goldfarb and his brother, Israel, were both Jewish composers who grew up on the Lower East Side of New York City. Israel, who became a Cantor, composed the melody to *Shalom Aleichem* in 1918. Meanwhile, Samuel made his way to Seattle. There, while working as the music director of Temple DeHirsch Sinai, a Reform synagogue where Rabbi Beth once served, he popularized the Dreidel song that he had written back in New York. He introduced it, we are told,

so Jewish school children would have a song to sing in the Seattle schools along with the Christian children. It was, as we all know, quite the Jewish musical hit!

As you prepare for your lightings this year, I hope you will put together some song sheets and join together in singing your favorite Chanukah tunes. As simple as some may be, they are a way to celebrate Jewish particularity and culture while emphasizing the holiday's focus on freedom and identity. Although we may have learned this practice from others, the joy these songs bring certainly adds to the blessing of the Chanukah lights.

Happy Chanukah!

Rabbi Jonathan



Richard and Rhoda Goldman Senior Rabbi Jonathan Singer



Chanukah

JETY+ETY Youth Chanukah Party (for 6th-12th grade)

Friday, December 16, 6:00 pm – 10:00 pm

First, at 6:00 pm, we will attend Shabbat Services in Martin Meyer (come up to the balcony!) At 7:00 pm, we will enjoy dinner, make some latkes in the kitchen, and have a party in Guild Hall 1!

Wear your ugly winter sweater and bring a wrapped gift; maybe a piece of art you made, something you no longer need, or something you bought for under \$10 — we will be having a huge round of white elephant!

Finally, bring any jackets you no longer need for One Warm Coat drive.

RSVP now >> <https://tinyurl.com/etychanukah2022> or email our youth advisor Indy at ijeremy@emanuelsf.org with any questions or accessibility needs.

6th-12th Grade!
Come party! RSVP now! @emanueltempleyouth

UGLY SWEATER CHANUKAH PARTY

**DECEMBER 16
6PM-10PM**

RSVP at
<https://tinyurl.com/etychanukah2022>



Shabbat Services in Martin Meyer
Sanctuary followed by a party in
Guild Hall (closest to the kitchen)

Latkes! Music! Dreidels! Gift Swap! Sufganyot!
Bring a gift (something found, something made,
or something under \$10)
Bring an old coat to donate to One Warm Coat!

email ijeremy@emanuelsf.org
with any questions

Young Adult 90's Chanukah Party

**Friday, December 16
7:30pm – Midnight**

Jewish Young Adults from around the Bay are invited to celebrate the Festival of Lights with a 90's-themed dance party at the Bottom of the Hill music venue! Wear your best 90's outfit and get ready to dance the night away to live music from the band, SHAMATI.

Tickets are limited.

\$ 35 Members

\$ 40 Non Members



**90s
Hanukkah Party**

**Registration
(includes drink)**
Members: \$35
Non-Members: \$40

Friday, Dec. 16 | 7:30 pm to midnight
Bottom of the Hill

CONGREGATION
EMANU-EL

Children's Chanukah Festival — A Chanukah Event for the entire Family!

Sunday, December 18
2:00 – 5:00 pm

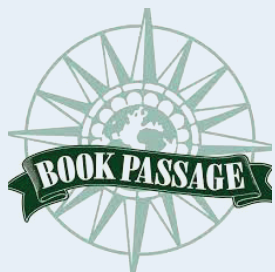
Please join Congregation Emanu-El for a fun, family-friendly Chanukah festival, where we will learn about this light-filled holiday through arts, story time, *sufganiyot* and games!

Wear your PJs and come hungry.

Participants will decorate their own menorah, play with dreidels and have tons of fun. The festival will end with a candle lighting.

Registration required.

Geared toward families with children under 10!



Marin Chanukah Celebration Pop-up

Wednesday, December 21, 5:30 – 6:15 pm

Book Passage, Corte Madera Store Courtyard, 51 Tamal Vista Blvd.

Join us for a festive 4th night of Chanukah with song, teachings, blessings and Menorah lighting with Cantor Marsha Attie and Rabbi Jonathan Singer. Come share in the delight and wonder of Chanukah — with *sufganiyot*, chocolate gelt and dreidels!

We look forward to seeing you for this special celebration!

Teen Led Chanukah Service, Menorah Lighting and Dinner

Friday, December 23, 6:00 pm, Dinner

Celebrate the festival of lights with a special Chanukah service, menorah lighting and oneg with holiday treats! Bring your own menorahs for a community lighting.



Vegan Latkes

Why a recipe for vegan latkes this Chanukah?

Well, first of all, why not? They are delicious and easy to make. But there are many other reasons to have a vegan option.

First of all, latkes are all about community. Huge plates are made, and we eat them together. And with more and more people going vegan, it's nice to be inclusive.

Another good reason is climate change. It is on our doorstep, and any time we can reduce our meat intake, or reliance on animal agriculture, it helps lower carbon emissions a little bit.

Lastly, animal welfare could be a consideration. Many animal farming practices are far from ideal, or sustainable, and it's nice to reduce suffering when possible.

Just a little delicious latke food for thought.

Happy Chanukah, and Bon Appetit!

Vegan Latkes (Potato Pancakes)

Recipe by Lisa Dawn Angerame courtesy of reformjudaism.org

INGREDIENTS

6 medium russet potatoes
1 medium onion
2 flax eggs (1 flax egg = 1 tablespoon ground flax powder + 3 tablespoons water)
1/3 cup flour
1 teaspoon baking soda
1 teaspoon salt
Safflower oil

DIRECTIONS

1. Whip up the flax eggs and set aside.
2. Peel the potatoes and place them and the onions into the food processor. Chop them as fine as possible.
3. Pour into a strainer and press out as much of the water as possible.
4. Mix the rest of the ingredients into the onions and potatoes.
5. Fry up in safflower oil until golden brown on both sides. Drain on paper towels and then freeze.
6. When ready to serve, bake in a 450° oven until hot.



Annual Light of Giving at Congregation Emanu-El

Sunday, December 11, 12:00 – 1:30 pm

One of our most profound and special annual events, Light Of Giving, will benefit Hamilton Families this year! The goal of Hamilton Families is to spark real change in ending family homelessness in the San Francisco Bay Area. Join us on Sunday, December 11 from 12:00 – 1:30 pm for a celebratory event that will help support families settling into a new community. We will have some food to nosh, art to create and good to do.

How Can You Help?

Please bring new bedding with you to help us reach our goal of supplying new bedding for 100 families. If you are unable to attend the event, but still want to contribute, we welcome monetary donations that will be used to purchase bedding on your behalf. Please see our website for details!

What We Need:

Each family bedding kit will include a queen sheet set, a queen blanket, two twin sheet sets and two twin blankets. We ask that you bring at least one of the bundles below; feel free to choose patterns or colors that you like.

- Complete Bedding for a family
- Queen Sheet Set + Queen Fleece Blanket
- 2 Twin Sheet Sets + 2 Twin Fleece Blankets
- Queen Bedding: Sheet Set + Fleece Blanket
- Twin Bedding: Sheet Set + Fleece Blanket
- Queen or Twin Sheet Set
- Queen or Twin Fleece Blanket

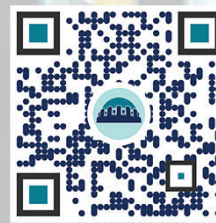


*The Emanu-El
Tzedek Justice Collective Presents*

Light of Giving
Congregation Emanu-El

Sunday, Dec. 11

12:00 – 1:30 PM



People of the Mitzvah

Saturday, December 17, 10:30 am – 12:30 pm

Every two years we are blessed to mentor adults of all ages through a B mitzvah journey. Please celebrate with us their great accomplishments at their Anshei Mitzvah ("People of the Mitzvah") service on Saturday morning, December 17th.



Adrienne Green



Cindy Redburn



Clare Raj



Cynthia Scott



Edward Hiscox



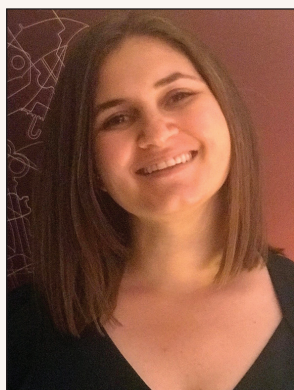
Emily Dubinsky



Jennifer Hochschild



Judy Nadel



Rebecca Pauly



Susanna Benningfield



Laurie Eisenberg



YFE FAMILY CAMP

Mark your calendars!

We are so excited to announce YFE Family Camp, at URJ Camp Newman from Friday, January 27th – Sunday, January 29th, 2023!

All YFE families with students in Gan (PreK/Kindergarten) – 5th Grade are invited.

This amazing Shabbaton will be filled with connecting, celebrating, learning, and all the fun of camp! It will be a weekend you won't want to miss!

Gan-2nd Grade families, URJ Camp Newman will be hosting a **Passover Family Camp from April 7th - 9th!**

If you have any questions, please contact Tori at TStarks@EmanuelSF.org

Stay tuned for more details!



Family Journey to Israel

with Congregation Emanu-El

Led by Cantor Arik and Rachel Luck

June 18, 2023 - June 30, 2023



View Itinerary and Register:
bit.ly/emanuelisrael



‘Open up your hearts and hands and *‘pray with your feet!’*”

— Rabbi Abraham Joshua Heschel

As the world opens up, we open up our hearts and souls and reinforce our congregant-to-congregant connections. If you are interested in volunteering for any of these programs, please email Ann Jackson, Volunteer Coordinator, at ajackson@emanuelfs.org.

We are thrilled to bring back our volunteer programs:

Cooking for Congregants

Prepare healthy and hearty meals for congregants who are ill, grieving or celebrating the birth/arrival of a child.



Care Calls

Reach out to community members during life-cycle moments



Card writing

Write and send greeting cards for birthdays, congratulations and condolences



Shabbat Greeting

Welcome fellow congregants and guests to Shabbat services



December Events

FRIDAY, DECEMBER 2

5:00 – 6:00 pm | Tot Shabbat

SATURDAY, DECEMBER 3

9:15 – 10:15 am | Clergy-Led Torah Study

SATURDAY, DECEMBER 10

9:15 – 10:15 am | Clergy-Led Torah Study

SUNDAY, DECEMBER 11

12:00 pm | Light of Giving for Hamilton Families

FRIDAY, DECEMBER 16

6:00 – 10:00 pm | Youth Group Ugly Sweater Chanukah Party

7:30 pm – Midnight | 90s Chanukah Party for Young Adults

SATURDAY, DECEMBER 17

9:15 – 10:15 am | Clergy-Led Torah Study

10:30 am – 12:30 pm | Anshei Mitzvah Service

SUNDAY, DECEMBER 18

2:00 pm | Children's Chanukah Festival

WEDNESDAY, DECEMBER 21

5:30 pm | Marin Chanukah Celebration

FRIDAY, DECEMBER 23

6:00 pm | Teen Led Chanukah Service, Menorah Lighting and Dinner

SATURDAY, DECEMBER 24

9:15 – 10:15 am | Clergy-Led Torah Study

TUESDAY, DECEMBER 27

7:00 pm | Young Adult Event/Golden State Warriors Jewish Heritage Night

SATURDAY, DECEMBER 31

9:15 – 10:15 am | Clergy-Led Torah Study



QR Code How-To's

The instructions for using a QR code are very simple.

- Open your camera app
- Point at QR Code
- A link should automatically pop up
- Click it

We hope that this makes it easier for you to register for events.



Welcome

Hi, my name is Vlad (it rhymes with odd), and I'm the new Communications and Marketing Manager here at Congregation Emanu-El.

I started this job at the end of August with glee, as I grew up in this neighborhood, and have a long history of being involved with Emanu-El in various ways since I was a little kid, growing up in the 94118. So, to help this congregation with such amazing values amplify its voice was a dream come true for me.

I want to let you know a little bit about me, and how I am bringing a different approach to this position.

I think what makes me a good marketer is that I focus on being a good listener. This ensures two-way communication, instead of just marketing "at" people.

Here are some ways that I plan to create deeper digital engagement within our community:

- **Two-Way Street** — I will be sending out periodic surveys seeking input on how we can improve our communications with you. I would love to know your thoughts, feelings, and suggestions on how we can have a more seamless communications experience.
- **Tech** — I'm an enthusiastic fan of keeping up with technology, and as you'll see later in this issue, Emanu-El is going all in on QR codes! I believe that this will make registering for events, checking out information on the website, and other things like that easier for you, and it will allow us to more accurately measure our engagement, so that we can know how better to serve you.
- **Colors** — You might have noticed that certain pages have a colored banner at the top. These colors are assigned to specific categories, and we'll be implementing these color and category themes across the Chronicle, the Inside weekly email, website, calendar, and possibly more places where it makes sense. This is to help you more easily identify sections and find what you may be looking for.
- **TikTok** - We have created a TikTok account! There's not much there yet but stay tuned for amazing gems of content. We'll be starting to add content to YouTube shorts as well.

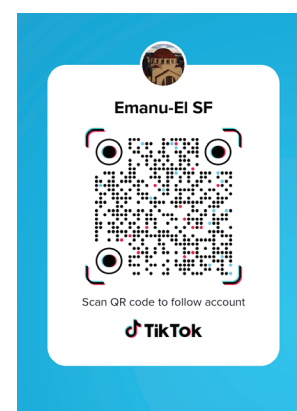
You can follow us at:

- www.tiktok.com/@_emanuel_sf
- www.youtube.com/c/CongregationEmanuElSF
- **Events** — There is a page later in this Chronicle that has a chronological list of events for the month, along with QR codes for easy information and registration. You will notice that it has a perforated line on the side of the page. That is to make it easy for you to cut it out and put it up on your fridge, or wherever it is convenient for you, so that you have easy access to that information.

I hope you enjoy our improvements, and I look forward to deepening our connection and conversations. The communications department's door is always open for ... communications 📣😊



Vlad Metrik



Ways to Give

Making a gift to Emanu-El is a meaningful way to honor friends and family while supporting the synagogue. The Temple offers a variety of donation opportunities so all members can participate in the mitzvah of tzedakah at whatever level is comfortable. For additional information about our different funds and various ways to give, please visit our website.

- **Send us a check:** Congregation Emanu-El, 2 Lake Street, San Francisco, CA 94118. Please make it out to Congregation Emanu-El – ATTN: Development.
- **Visit Our Website:** emanuelsf.org/support-us/
- **Appreciated Stock Gifts:** The Congregation accepts all contributions made via stock transfers. You will enjoy an immediate tax deduction for the value of the stock transfer and avoid paying capital gains.
- **Corporate Matching:** Many Bay Area companies will match your gift dollar-for-dollar. Please contact your company's matching gifts coordinator to determine whether your gift to Congregation Emanu-El can be matched.
- **Planned Giving:** Including Congregation Emanu-El in your estate planning is a promise to your children, grandchildren, and future generations that Emanu-El will continue to be a thriving home for worship, study, and community.
- **QR Code:** Scan the code to the right with your phone's camera to access our Development web page.



If you need assistance, please contact the Development Office at development@emanuelsf.org

Thank you for your generosity and participation. Your contributions will help ensure we meet the needs of the Emanu-El community — now and for future generations. The following gifts were received from September 19, 2022 – October 23, 2022.

CANTORS' MUSIC FUND

Supports the Congregation's music programs and is used for charitable giving at the Cantors' discretion

Anonymous

Jeffrey Bornstein

in memory of Veronica Sanchez and Oren Bornstein

Judith & Ralph Jacobson

in celebration of Eli Sosna-Jacobson's Bar Mitzvah

Ariel Sosna & David Jacobson

in celebration of Eli Sosna-Jacobson's Bar Mitzvah

Jan Swan

in memory of Jeanne and Alexander Kaiser

EMANU-EL COMMUNITY SERVICE FUND

Promotes and supports social action and community service programs

Charles & Lenore Bleadon

Stuart & Debra Eisendrath

in observance of the *Yahrzeit* of Steve Eisendrath

Jeanine Hawk & Darrell Jan

Susie & Denis Roy

in memory of Diane Roth Ehrman

Randee Seiger

in observance of the *Yahrzeit* of Frieda Cossman

EMANU-EL LIFE-CYCLE FUND

Enables all congregants to celebrate significant milestones, regardless of economic circumstances

Ariel Sosna & David Jacobson

in celebration of Eli Sosna-Jacobson's Bar Mitzvah

EMANU-EL PRESCHOOL FUND

Provides scholarships and support for our Preschool programs.

Anonymous

Carly & Daniel Abbott

Stephanie & Stanislav Garber

Danielle & Samuel Gazitt

Joshua & Jenny Herbach

Maria Lasday

Derek Liu & Evelyn Hu

Victor & Alla Mezhvinsky

Nathan & Anne Petrowsky

Sivan & Jeremy Sasson

Joseph Smolen & Kaitlin Solimine

FLOWERS FOR THE BIMAH

Ariel Sosna & David Jacobson

in celebration of Eli Sosna-Jacobson's Bar Mitzvah

FOR THE ROOSEVELT FOOD PANTRY

Stephanie Scott

in memory of Wayne Bertelsen

Stephanie Scott

in memory of William M. Scott

ONEG SHABBAT AND KIDDISH SPONSORSHIP FUND

Provides for the weekly Shabbat Oneg, Kiddush, and other congregational receptions.

Bruno Perez

RABBIS' DISCRETIONARY FUND

Used for charitable giving at the Rabbis' discretion.

Anonymous

Jeffrey Bornstein

in memory of Veronica Sanchez and Oren Bornstein

Denise & Justin Dautoff

in honor of Denise Dautoff's conversion

Brenda Friedler

in honor of Rabbi Stephen Pearce and Dr. Laurie Pearce

Brenda Friedler

in honor of John Whalen

Brenda Friedler

in honor of Susan Whalen

Rebecca Goldfader & Bevan Dufty

David & Diane Goldsmith

in observance of the *Yahrzeit* of Babette Goldsmith

Cathryn Hilliard

in observance of the *Yahrzeit* of Curtis Sampson

Kenneth Laxer

in observance of the *Yahrzeit* of June B. Laxer

Robin & Donald Moses

in memory of Carole Rambach Breen

Robin & Donald Moses

in appreciation of Rabbi Beth Singer

Erica & Dana Rabb

in appreciation of Rabbi Ryan Bauer

Ariel Sosna & David Jacobson

in celebration of Eli Sosna-Jacobson's Bar Mitzvah

Albert Villa

Paul Zarefsky & Marsha Felton

in honor of Alan Greinetz

Naftali & Schirley Zisman

in observance of the *Yahrzeit* of Itzak Zisman

YOUTH EDUCATION FUND

Supports special programming and materials for the Youth and Family Education Program

Michele Dinoia

Marc & Amanda Meisner

in appreciation of Ariana Estoque

Frana Price & Rick Ohlrich

in observance of the *Yahrzeit* of Mollie Price

Laura Salzman

in memory of Julius Salzman, Leona Salzman, and Harry Rubino

Lawrence & Jacqueline Slayen

in honor of Justin Slayen

OTHER CONTRIBUTIONS**Shira Albagli**

in honor of Leah Greenberg

Rochelle Anixterin observance of the *Yahrzeit* of Estelle R. Greenberg**Stuart & Myrna Aronoff**

in memory of Shelia Adelberg

Stuart & Myrna Aronoff

in memory of Michael Stern

Stuart & Myrna Aronoff

in memory of David Himy

Carol Berg

in memory of Irving Louis Berg

Martin Bloch

in memory of Deb Bloch

Marilyn Brennerin observance of the *Yahrzeit* of Harry Brenner**Jane Brooks**

in honor of Micah Moskowitz's Bar Mitzvah

Ruth DeHovitz

in memory of Paul Tandler

Ruth DeHovitz

in memory of Carole Breen

Jennifer Fowler

in celebration of Shelley Bransten and

Dr. Phil Chenette's wedding

Pamela & Paul Ginocchioin observance of the *Yahrzeit* of Lawrence Ginocchio**Scott & Vicki Kahn**

in honor of Rabbi Stephen Pearce

Linda Koffman

in honor of Suzanne Felson

Esther Lerner & Daniel Carricoin observance of the *Yahrzeit* of Morris and Fela Lerner**Fred Levin**in observance of the *Yahrzeit* of Irving Levin**John Maccabee & Sherry Morse**

in honor of Sidney Greenberger

Sharon Marks

in appreciation of the temple for the High Holy Days

Laura Musikant-Weiser & Neil Weiser

in celebration of Ari Weiser &

Angela Londono's wedding

Ellen & N. James Myerberg

in appreciation of the High Holy Days services

Harry & Marilyn Nebenzahl

in memory of Scott Nebenzahl and in appreciation of

Rabbis Beth and Jonathan Singer

James & Sheryl Reuben

in celebration of Myrna and Stuart Aronoff's

anniversary

Stanley & Ceci Salomon

in appreciation of Cantor Marsha Attie

Karen Schiller

in memory of Joe Whelan

Rick & Kathi Silverman

in honor of Alan Silverman

Abraham & Tzeira Sofer

in memory of Cyra Galpern Fridberg

Lois Wander

in appreciation of all the staff,

clergy, musicians, and production

team at High Holy Days Services



Calling All Remaining Lapsed Members.

Please continue to be an official part of the Emanu-El Family.

Renew your membership before January 15, 2023.

Every pledge counts, and we want to count you in.

How To Renew Your Membership:

This year more than ever, please renew online by January 15.

It's easy — just log in to your My Emanu-El account.

Here are some helpful tips for logging in to your My Emanu-El account:

- Can't remember your username? It's often your email address.
- Forgot your username or having issues logging in? Email Irina Leinova at ileinova@emanuelsf.org.
- Remember that passwords are case-sensitive, so ensure your Caps Lock is OFF.
- Additional questions about your membership or renewal? Contact Director of Member Experience, Ariana Estoque at aestoque@emanuelsf.org or (415) 750-7552.

** Note: Our login portal will no longer supports Microsoft Internet Explorer 9 and 10. Please consider using another browser.*

Condolences to Our Members Who Have Suffered A Recent Loss

Allison Abta (Ron) on the loss of her father; Eli, Violet, and Ariella Abta on the loss of their grandfather, **Walter Jacobs**.

Anne Roher on the loss of her husband, **Martin Roher**.

Nicole Kayes on the loss of her husband; Sidney Kayes on the loss of her father, **Jeffrey Kayes**.

Gwen Sidley (Eric Cohen) on the loss of her mother; Rachel and Hannah Cohen-Sidley on the loss of their grandmother, **Barbara Sidley**.

Myrna Aronoff (Stuart) on the loss of her brother, **Stuart Chesler**.

Anne Rosenfeld on the loss of her husband; Matthew Rosenfeld on the loss of his father, **Robert Rosenfeld**.

Michael Edelstein (Rachel Styne) on the loss of his aunt; Cooper, Samara, Sadie and Oliver Edelstein on the loss of their great-aunt, **Elaine Edelstein Abe**.

Susan Karp on the loss of her mother, Gregory Karp-Neufeld on the loss of his grandmother, **Ruth Karp**.

Stephen Galloway (Jessica) on the loss of his father; Claire, Benjamin and Oliver Galloway on the loss of their grandfather, **Frederick Galloway**.

Edward "Ted" Hiscox (Derek Barnes) on the loss of his brother, **Roger William Hiscox**.

Diane Campbell (Brian) on the loss of her sister; Henry Campbell on the loss of his aunt, **Jennifer Moshier**.

Mazel Tov to Our Members Who Have Experienced Joy

Patty and Chuck Ortenberg on the birth of their grandson, **Edgar Rose Ortenberg**.

Susan and David Dossetter on the birth of their daughter, **Ever Elaine Dossetter**.

Laura and Josh Kline on the birth of their daughter, **Eliza Hazel Kline**.

Sarah Nathan and Adam Shapiro on the birth of their daughter; Carol and Richard Nathan on the birth of their granddaughter, **Frances June**. She joins big brother, Sidney.

Erin Medlin and Andrew Miklas on the birth of their second son, **Evan Benjamin Miklas**.

Sheri and Paul Folino on the birth of their son, **Luca Holt Folino**.

Helen Wen and Jason Zaler on the birth of their daughter, **Sydney Wen Shanle Zaler**.

Kayla and David Kissling on the birth of their daughter, **Leah Margrit Kissling**.

Lynn Hershman Leeson on being awarded a special mention from the Jury for her participation in the 59th International Art Exhibition of La Biennale di Venezia – *The Milk of Dreams*. The award was presented with the following motivation: "for indexing the cybernetic concerns that run through the exhibitions in an illuminating and powerful way that also includes visionary moments of her early practice that foresaw the influence of technology in our everyday lives."

Welcome New Members

Ms. Kate Bedford	Ms. Laura Seegal
Mr. Dean Benjamin	Ms. Jennifer Snyder
Dr. Jonathan Branfman	Mr. Jason Stein
Ms. Maren Jinnett	Eleanor Stein
Ms. Kasey Le	Lucy Stein
Davita Lesch	Mrs. Jennifer Stein
Rebecca Milian	Mr. Jeffrey Stulmaker
Natasha Nussbaum	Asher Stulmaker
Mrs. Phoebe Peronto	Noah Vacante
Ms. Melissa Rick	Ms. Rachel Warshaw
George Robbins	August White
Michelle Robbins	Mr. Nick Wolf
Mr. Andrew Robbins	Mr. Sean Youra
David Roos	

Welcome Back Rejoined Members

Ms. Rachel Balchum	Mr. Josh Einhorn
Jolie Behravan	Samson Einhorn
Darien Behravan	Ayla Einhorn
Mrs. Alison Bradshaw	Ms. Melissa Nemer
Mr. Drexel Bradshaw	Mrs. Anna Nikhinson
Madeline Bradshaw	Mr. Paul Nikhinson
Abigail Bradshaw	Miriam Nikhinson
	Mrs. Rhonda Rodgers
	Mr. William Tannenbaum

B'nei Mitzvah



Chloe Kowal

Bat Mitzvah:

December 3, 2022

Parents:

Lauren and Andrew Kowal

Torah Portion:

Vayetzei



Eden Scott-Weiner

Bat Mitzvah:

December 3, 2022

Parents:

Alisa Weiner and Alison Scott

Torah Portion:

Vayetzei



Ben Friedland

Bar Mitzvah:

December 10, 2022

Parents:

Heather and Peter Friedland

Torah Portion:

Vayishlach





Congregation Emanu-El
Two Lake Street
San Francisco, CA 94118
emanuelf.org
(415) 751-2535

PERIODICAL

We are a vibrant, sacred Jewish community that is dedicated to advancing our members' lifelong involvement in Judaism through worship, learning, good deeds, and congregant-to-congregant connections.

STAFF

Beth Singer,
Richard and Rhoda Goldman Senior Rabbi
Jonathan Singer,
Richard and Rhoda Goldman Senior Rabbi
Sydney B. Mintz, Senior Associate Rabbi
Ryan Bauer, Senior Associate Rabbi
Jason Rodich, Rabbi
Sarah Joselow Parris, Rabbi
Marsha Attie, Cantor
Arik Luck, Ben and A. Jess Shenson Cantor
Roslyn Barak, Senior Cantor Emerita
Stephen Pearce, PhD, Taube Emanu-El Scholar
and Senior Rabbi Emeritus
Rabbi Lawrence Kushner, Emanu-El Scholar
David N. Goldman, Executive Director and
General Counsel

BOARD OFFICERS

Ellen Kaye Fleishhacker, *President*
Alan Greinetz, *Treasurer and*
Immediate Past President
Barrett Cohn, *Secretary*
Mark Lehmann, *Board Member*
Julie Levine, *Board Member*
Paula Pretlow, *Vice President*
Joel Roos, *Vice President*
Rita Semel, *Emerita, Board Member*
Bob Tandler, *Board Member*

BOARD OF DIRECTORS

Robert Blum	Dr. Larry Rand
Nersi Boussina	Leesa Miao Romo
Sue Diamond	Lisa Stern
Aaron Finegold	Gunda Trepp
Alia Gorkin	Matt Van Horn
Jon Holman	Noah Wintroub
Robert Newman	Hilary Zarrow

The Temple Chronicle (USPS 023-317) is published monthly except June and July for \$36 per year by The Congregation Emanu-El, Two Lake Street, San Francisco, CA 94118. Periodicals Postage Paid at San Francisco, CA, and at additional mailing offices.

POSTMASTER: Send address changes to The Temple Chronicle at Congregation Emanu-El, Two Lake Street, San Francisco, CA 94118.



Is Israel the Next Middle East Energy Powerhouse?

Sunday, January 22, 2023

Presented by the Israel Action Committee (IAC)

Please join us for a talk with NewMed Energy CEO Yossi Abu. NewMed Energy is Israel's leading energy partnership in the exploration, development, production, and sale of natural gas and condensate.



NewMed Energy's home court is the Eastern Mediterranean. It has initiated the natural gas sector in Israel and made history with its unprecedented agreements with Egypt, Jordan, and the UAE, strengthening peace and increasing stability in the Middle East.

NewMed Energy has been a critical partner in almost every gas discovery made in the last thirty years in Israel's Exclusive Economic Zone (EEZ) and the first natural gas discovery made in Cyprus's EEZ. NewMed Energy holds 45.34% of the Leviathan Reservoir, the largest gas reservoir in the Mediterranean. The Leviathan gas production serves as a critical energy source for the State of Israel and the region's countries.

NewMed Energy has helped accelerate the recent maritime border deal with Lebanon, and its evolving relations with Turkey and Europe as Israel seeks to supply Europe's natural gas needs considering the Russian invasion of Ukraine.

Please join us as we explore the potential of Israel as an energy powerhouse and how it is reshaping political and economic ties within the region.